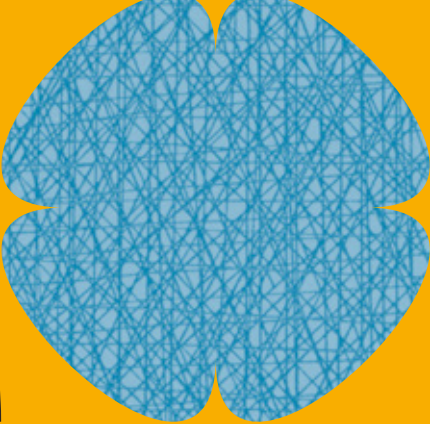


# Formica® Collection Patterns





## **The first and original**

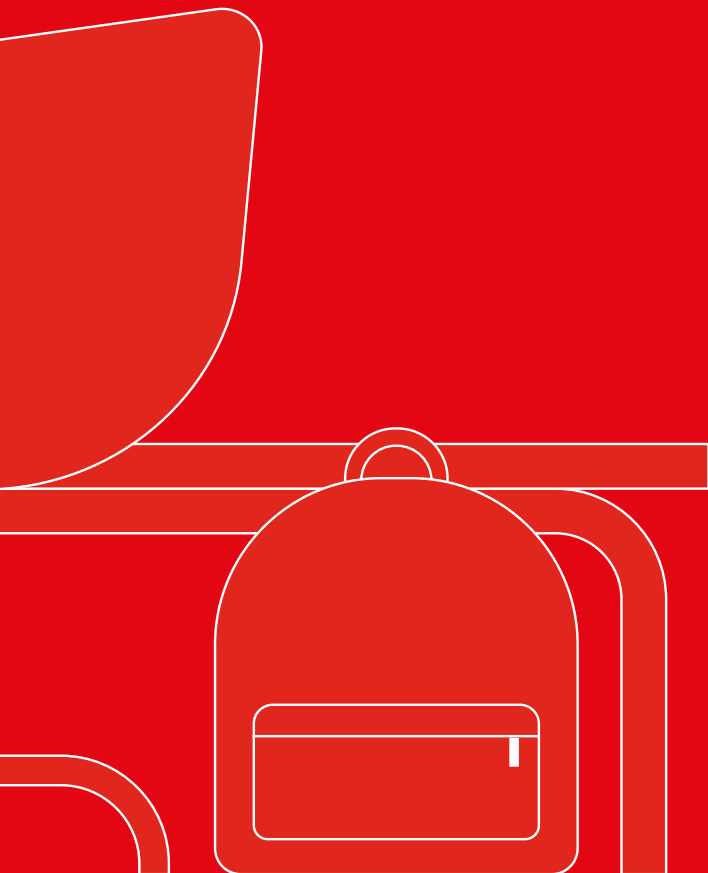
Formica Group invented high pressure laminates in 1913. Pioneers by definition, our iconic Formica® brand represents the quintessence of laminates.

## **Inspired by life**

Laminates entered people's daily lives and made modernity dreams come true and accessible. Similarly, the demand for multifunctional, practical and durable designed surfaces is a constant inspiration for our Formica® Collections. At rest, at leisure, at work.

## **Evolving with the times**

The way people live, work and play continuously changes. Formica Group keep pace with these evolving times through constant innovation, reflecting global trends and responding to ever changing needs and habits. The true original, still surfacing the world.



# Patterns

The Formica® Patterns Collection features 86 decors and 10 textures inspired by the simplistic beauty of natural materials, abstract designs and engineered surfaces.



- F9271 Reclaimed Denim Fiber



# Redefining pattern through surfaces

Whether you desire a subtle and sophisticated aesthetic or one which boasts expression, each decor is sure to leave a lasting impression on any interior space.

Drawing inspiration from world-renowned luxurious natural stones, timeless terrazzo surfaces, metal effects and classic textiles, the Formica® Patterns Collection will enhance the overall look of your interior through design and texture. Our innovative design process combines reclaimed materials, handcrafted artworks and modern techniques to create surfaces that exude a contemporary and timeless appeal.

Each of the nine design series within the collection tells its own story - redefining pattern through surfaces.



● F5015 Black Painted Marble

● F0193 Xenon







● F7403 Nero Marquina

● F1535 Tornado



• F8381 Spectra Chip

• F8844 Aged Ash




• F7459 Brite White

# SUN




• F8387 Black Chip



• F4971 Natural Gray Felt

• F8822 Denim





• F8578 Sund Elm

• F4971 Natural Gray Felt







F5782 Formal Walnut ●



● F7902 Iron





• F5935 Purbeck Flint



• F8239 Henna



● F8578 Sund Elm

● F8812 Tinted Paper Terrazzo





• F1998 Oslo

• F8813 Tonal Paper Terrazzo



H

F8238 Blush •



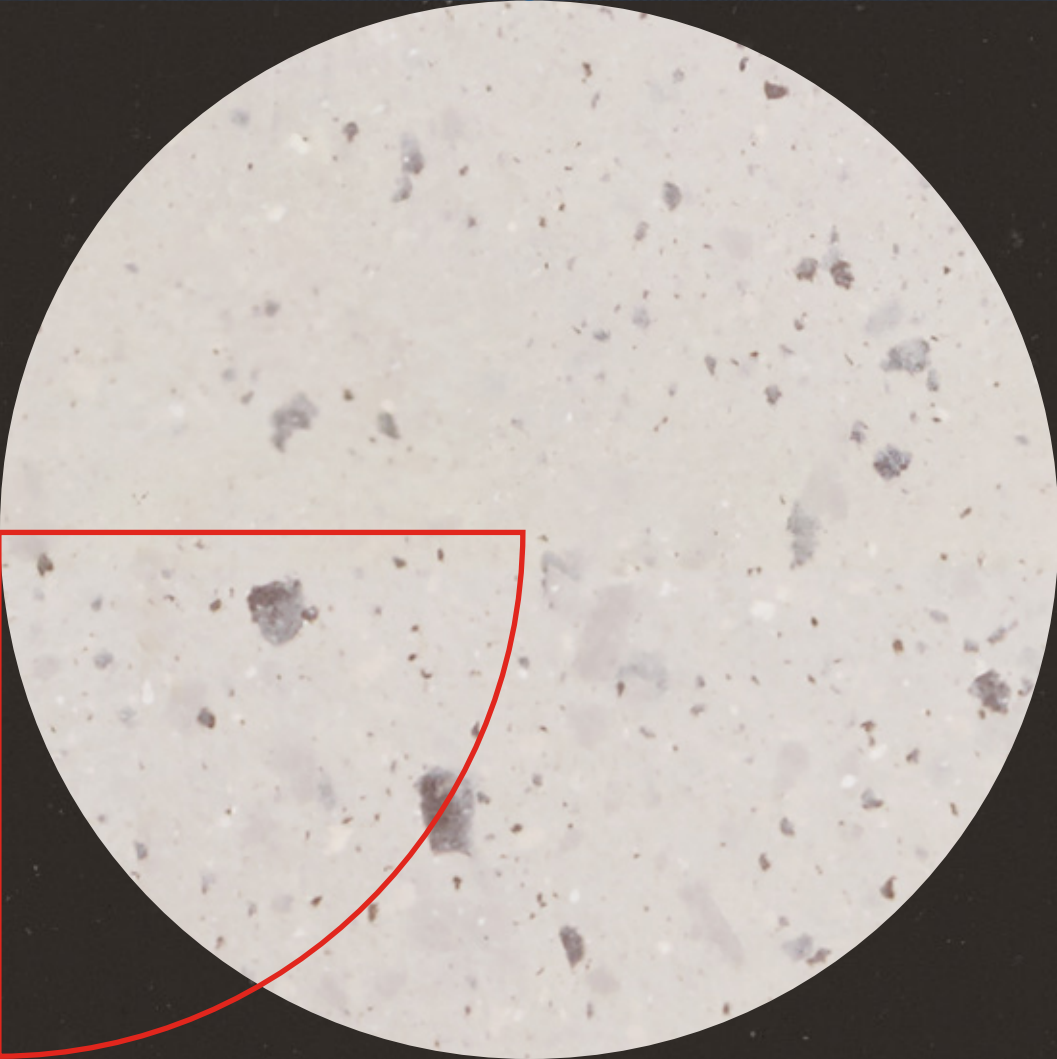
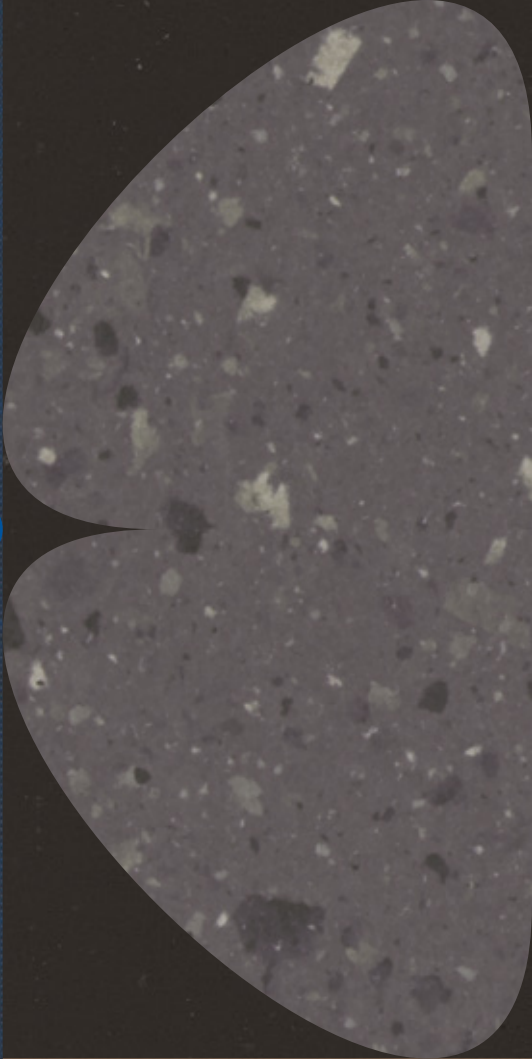
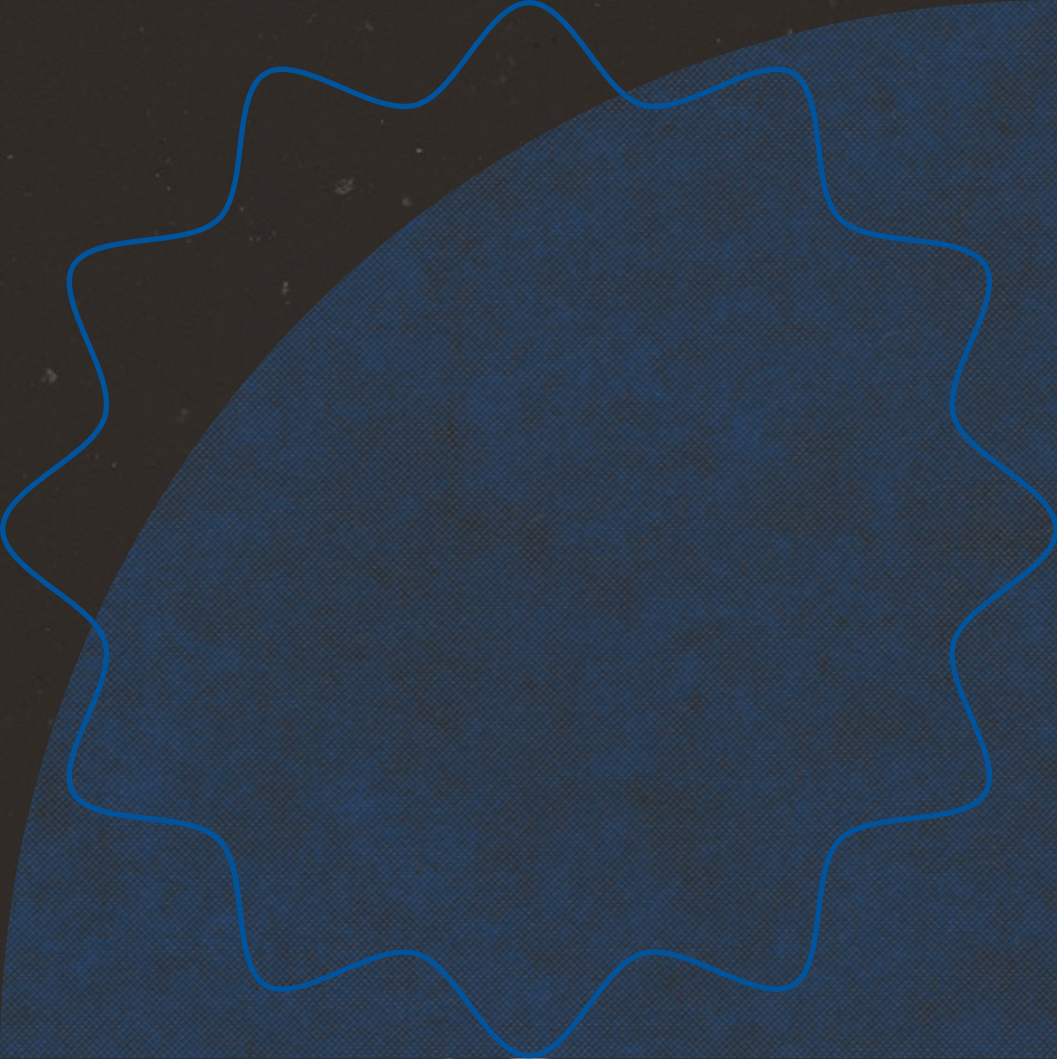
• F5014 White Painted Marble

# The COCKTAIL LOUNGE



● F2253 Diamond Black

● F5015 Black Painted Marble





# RAW

## Reclaimed Beauty

Turning attention to intriguing, trend-led surfaces, the Raw series celebrates the harmony between design and sustainable manufacturing practices.

Each decor within this series delivers an authentic aesthetic through an array of textures, natural hues and sustainably sourced reclaimed and recycled materials. Manufactured in small-batch craft production, each sheet is unique with natural characteristics.

Breathing new life into waste from solid colour decor paper production, trimmed scrap paper is recycled to make unique terrazzo chips and is mixed into paper pulp, to create a new decor paper that utilises reclaimed material as part of the design. **Tinted** and **Tonal Paper Terrazzo** deliver a timeless, expressive look within the interior landscape, serving as a focal point in any interior space. Respecting the origins of this paper-based product, our new **Paper surface texture** is applied to deliver a raw, handmade feel.

Integrating a sustainable manufacturing process, the decor paper used to create our new **Natural** and **Black Recycled Kraft** decors utilise recycled pulp and natural additives including waste from coffee bean roasting and coffee bean bags.

Organic with an earthy charm, each sheet is one of a kind, showcasing unique highlights of speckles and fibres from its original source. Visually deceiving, the **Recycled Kraft** decor papers have the appearance of paper but due to the properties of high pressure laminate, deliver a highly durable surface performance that is resistant to stains, abrasions and moisture.

Always in fashion, our new **Reclaimed Denim Fiber** decor is innovatively made from waste denim fibres and mixed with recycled cellulose pulp to create an attractive denim decor paper. Each sheet of **Reclaimed Denim Fiber** is unique, due to its natural paper making process.

The RAW series of reclaimed decor papers use small-batch craft production; therefore, each sheet is unique and natural.

● F9271 Reclaimed Denim Fiber







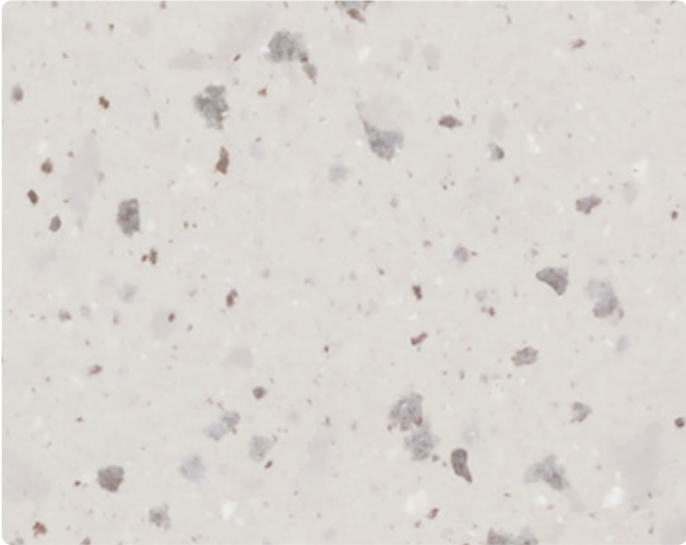
F2962 Clementine ●

F1194 Iris ●



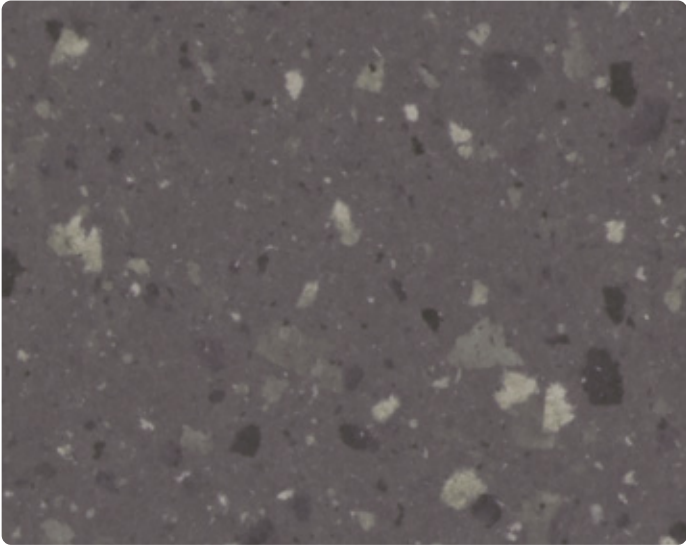
● F3209 Sol

● F9684 Natural Recycled Kraft



**F8812**  
Tinted Paper Terrazzo

Paper



**F8813**  
Tonal Paper Terrazzo

Paper



**F9684**  
Natural Recycled Kraft

Essence



**F9685**  
Black Recycled Kraft

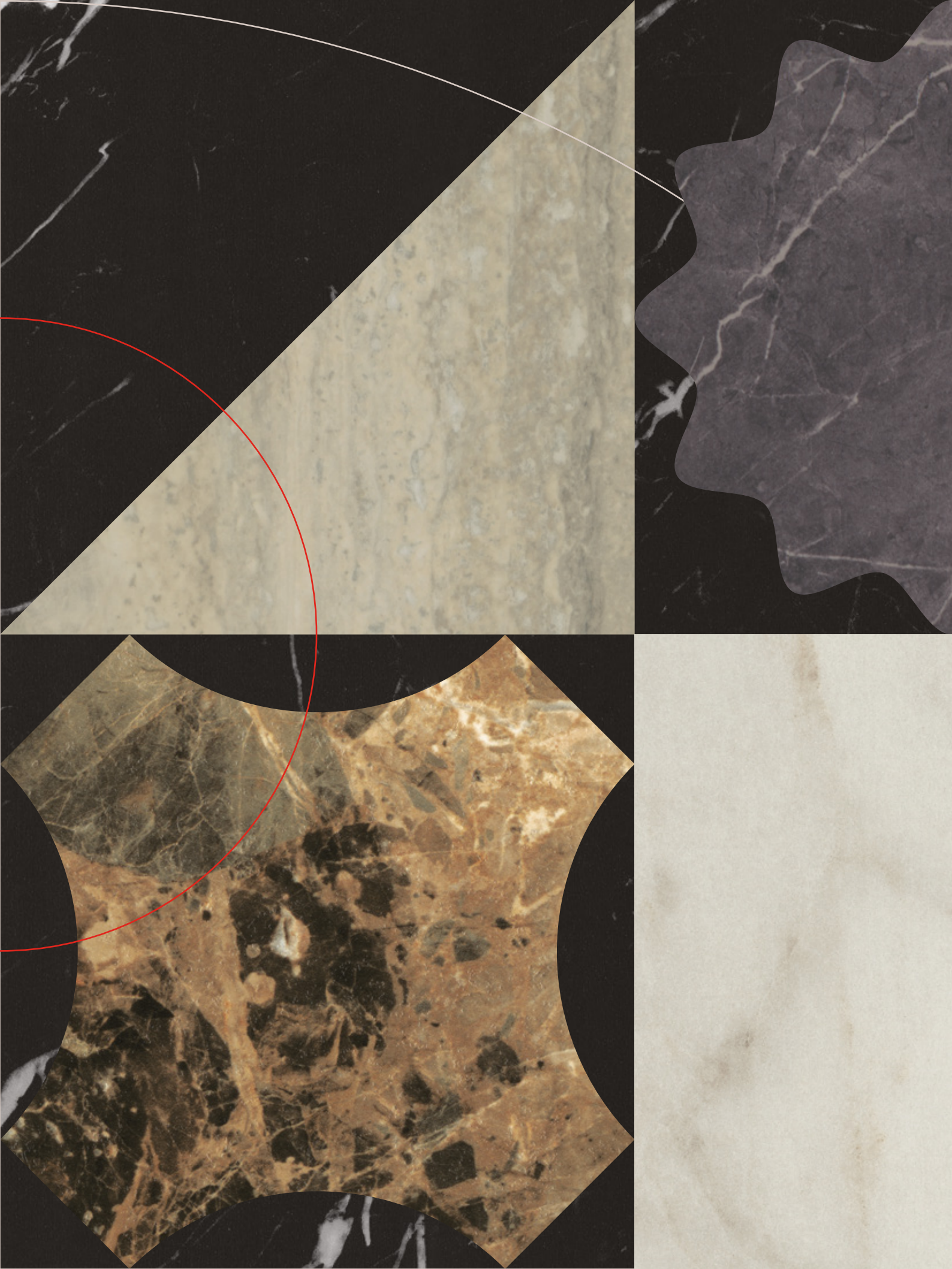
Essence



**F9271**  
Reclaimed Denim Fiber

Plex

The RAW series of reclaimed decor papers use small-batch craft production; therefore, each sheet is unique and natural.





# Stones

## Majestic Stones

Inspired by the world's most beautiful natural stones, the Stones series connects interiors with stunning marble inspirations, transforming an everyday space into a sanctuary of luxury.

The soft white tones of Calacatta Caldia marble make it one of the most luxurious stones in the world. Our new interpretation, **Calacatta Cava**, marries a soft white background with 'barely there' translucent grey and taupe veins, perfectly reflecting consumers' evolving preferences for comfortable and relaxed interiors, thereby creating an enhanced sense of space.

In dramatic contrast, our new **Nero Marquina** decor offers an inverse aesthetic, boasting a rich black background and striking white veins. The large architectural scale of this design creates drama, through a grand gesture of pattern.

Each new stone introduction is enhanced through their marbled features, creating stylish additions with remarkable distinction. The Stones series captures the majestic essence of the natural world, creating a timeless aesthetic with unlimited creative possibilities to elevate any interior.

# The Club

SINCE 1930

● F8243 Night Shade

● F3458 Travertine Silver

H



**F3460**  
Calacatta Marble

AR Plus®



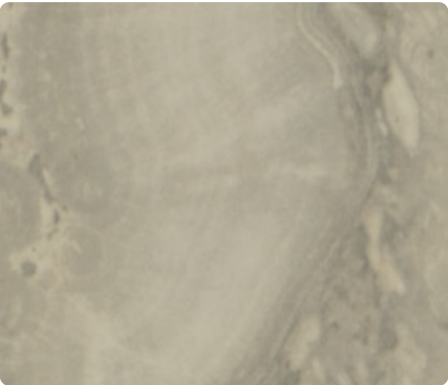
**F5018**  
Calacatta Cava

Satin NDF



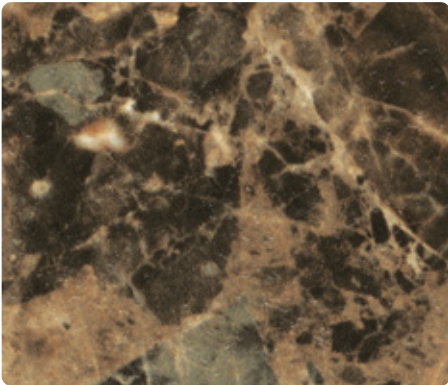
**F3421**  
Bianca Luna

Satin NDF



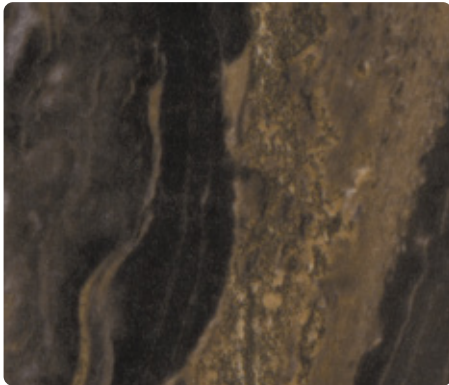
**F3458**  
Travertine Silver

AR Plus®



**F3457**  
Breccia Paradiso

AR Plus®



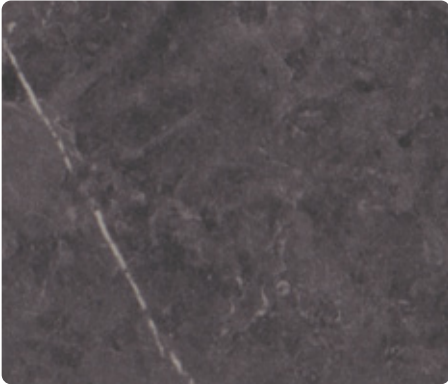
**F9482**  
Marbled Cappuccino

AR Plus®



**F7402**  
Pietra Grafite

Satin NDF



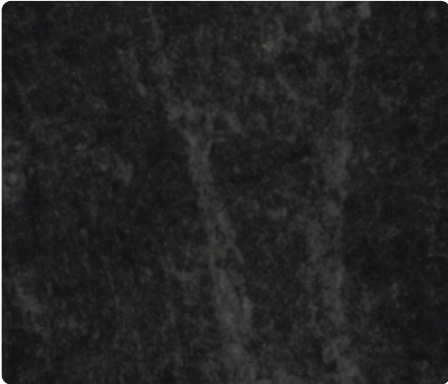
**F9483**  
Ferro Grafite

Satin NDF



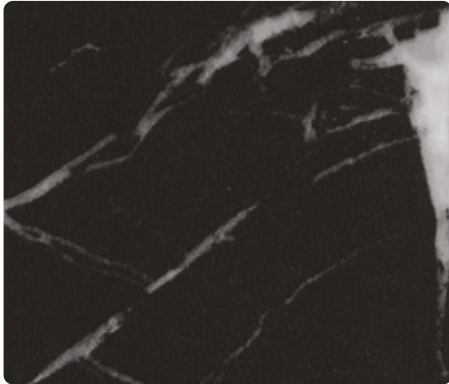
**F9485**  
Nero Grafite

Satin NDF



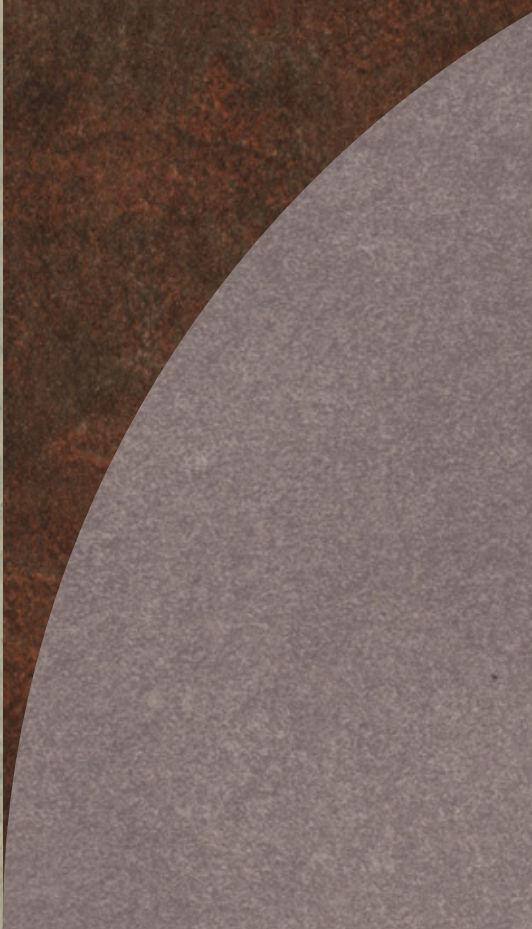
**F3476**  
Jet Sequoia

AR Plus®



**F7403**  
Nero Marquina

Satin NDF







# Engineered

## Engineered Style & Functionality

Offering a sleek and modern look, the Engineered series is inspired by materials used throughout the built environment and embraces the variety of colours and patterns that they offer. Perfectly engineered for contemporary interior spaces.

Our new **Chip** decors make a feature palette of the collection, delivering a contemporary twist on classic terrazzo. Developed in collaboration with UK based designer **Olivia Aspinall**, the decors bring a bold and artisanal look, to create spaces that exude energy and expression. With four diverse and versatile colourations, the Chip decors seamlessly combine with the **Formica® Colors Collection**, allowing for a truly integrated design experience.

While concrete and plaster are a mainstay in interior design, our new **Lulworth** and **Purbeck Flint** decors embrace a subtle and sophisticated appearance, compared to what can be a harsh industrial trend.

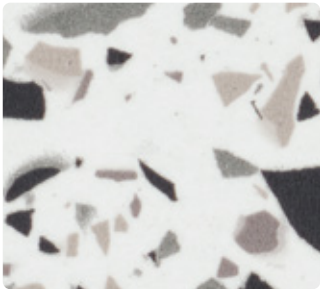
These calm and mottled decors are adaptable to any colour scheme with low-contrast colour options and warm tones reminiscent of plaster effects. Perfectly complemented with our new **Arcosa texture**, the decors are enhanced with this slightly eroded, grainy and matt surface finish.

Taking inspiration from engineered stones, our new **Neo** decors present an element of tranquillity and harmony to any space. The gentle clouded pattern and colourways allow for versatility and flexibility, making the palette suitable for a wide range of design styles and applications.

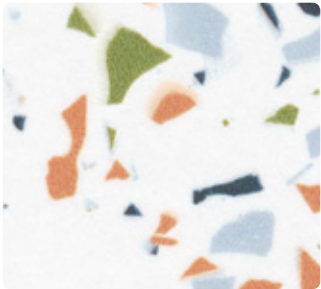
The Engineered series offers a contemporary and sophisticated look to interior surfaces through innovative decors, diverse colourations and complementary design possibilities.

● F8832 Elemental Corten

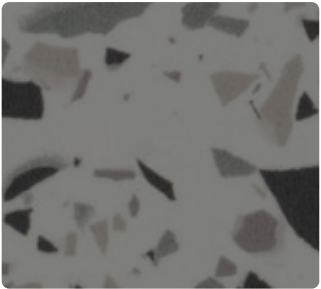




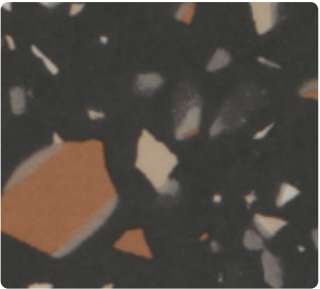
**F8382**  
White Chip      Satin NDF



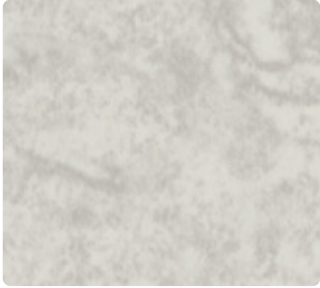
**F8381**  
Spectra Chip      Satin NDF



**F8372**  
Grey Chip      Satin NDF



**F8387**  
Black Chip      Satin NDF



**F6363**  
Elemental Ash      Honed



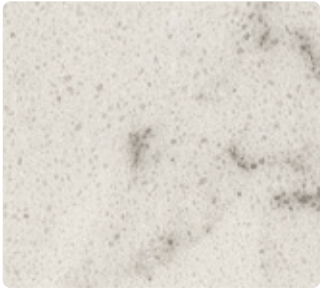
**F8830**  
Elemental Concrete      Honed



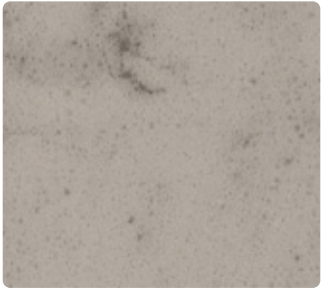
**F8833**  
Elemental Graphite      Honed



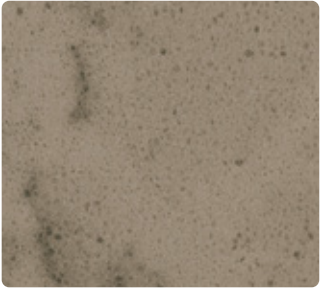
**F8832**  
Elemental Corten      Honed



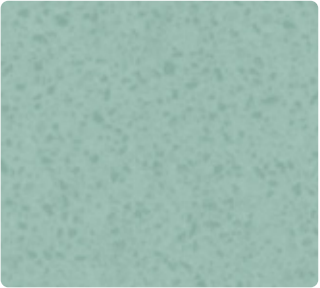
**F6314**  
Neo Cloud      Satin NDF



**F6316**  
Neo Tornado      Satin NDF



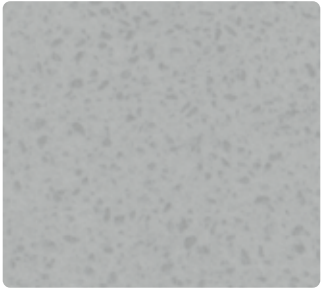
**F6315**  
Neo Cyclone      Satin NDF



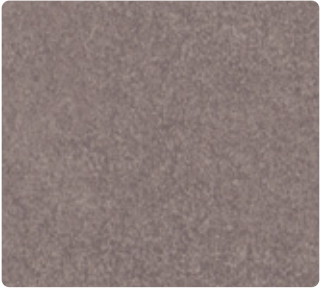
**F6728**  
Paloma Jade      Matte 58



**F6698**  
Paloma Polar      Matte 58



**F6724**  
Paloma Folkestone      Matte 58



**F5936**  
Lulworth Flint      Arcosa



**F5935**  
Purbeck Flint      Arcosa



**F6362**  
Concrete Formwood      Honed



# Monolith

## A Fusion of Colour & Texture

Inspired by the geological aesthetics of natural stone, combined with manmade marks, our new **Monolith texture** delivers an impressive appearance that's imposing, ageless and endlessly versatile.

Presented in a selection of design-led solid colours, the **Monolith texture** boasts a dramatic surface pattern with its large-scale, distinctive stone-like design.

Expertly crafted to capture the most striking elements from two natural stones, the unique texture offers the hybrid

characteristics of stone, concrete and even leather depending on the colour and environment it is presented on. The perfect fusion of colour and texture accentuates various gloss levels across the surface, as if carved or excavated from the base material.

With its commanding presence, the **Monolith** series can be used to create bold architectural features on walls, columns, or large pieces of furniture, adding a long established and solid feel to any space.



GROUND FLOOR

< ROOMS 0-9  
< RESTAURANT

● F5489 Espresso Pear

● F6349 Frosted Pearl

● F8793 Green Slate Monolith

MO  
WO  
HOTEL



MO  
WO  
HOTEL







**F2255**  
Polar White Monolith



**F7923**  
Surf Monolith



**F7927**  
Folkestone Monolith



**F1994**  
Fox Monolith



**F7837**  
Graphite Monolith



**F8793**  
Green Slate Monolith





# Frosted

## Lustrous Elegance

Introducing the opulent Frosted series of pearlescent high pressure laminates.

Our latest introduction is inspired by the shimmering beauty of seawater pearls and the delicate sheen of satin materials. The new **Frosted Pearl** decor will transform an interior ambience into a realm of elegance.

The carefully curated palette ranging from creamy white tones to trend-led burnished colours bring a sense of lustre to an interior space. With its stunning palette including warmer notes of gold and copper, the collection seamlessly combines metallic inspirations with pearlescent aesthetics, blending luxury and elegance.

The Frosted series harmoniously offers versatility and sophistication to the collection.

● F5489 Espresso Pear

● F6349 Frosted Pearl

## GROUND FLOOR

< ROOMS 0-9

< RESTAURANT

● F8793 Green Slate Monolith



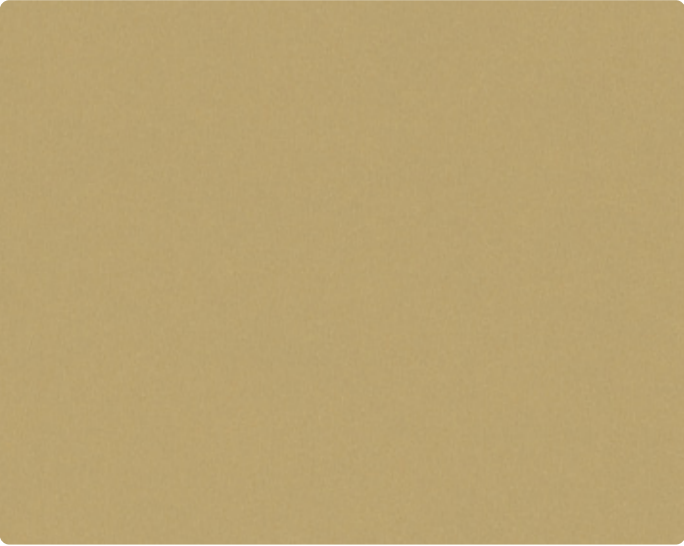
**F6349**  
Frosted Pearl

Gloss



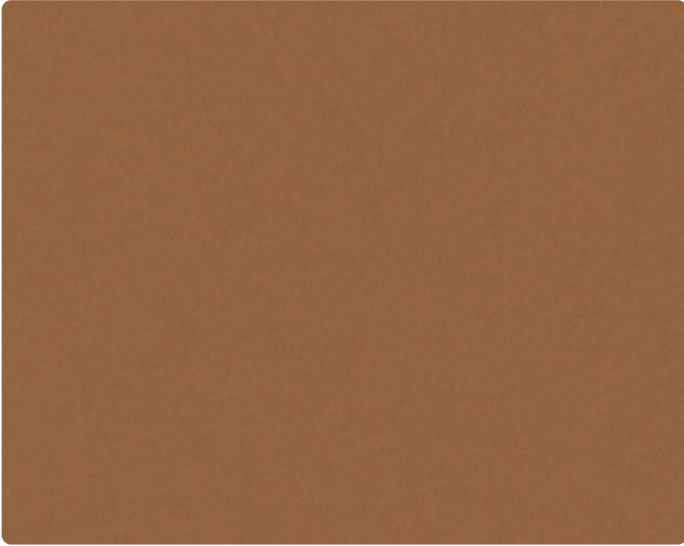
**F6350**  
Frosted Dusk

Gloss



**F6352**  
Frosted Gold

Gloss



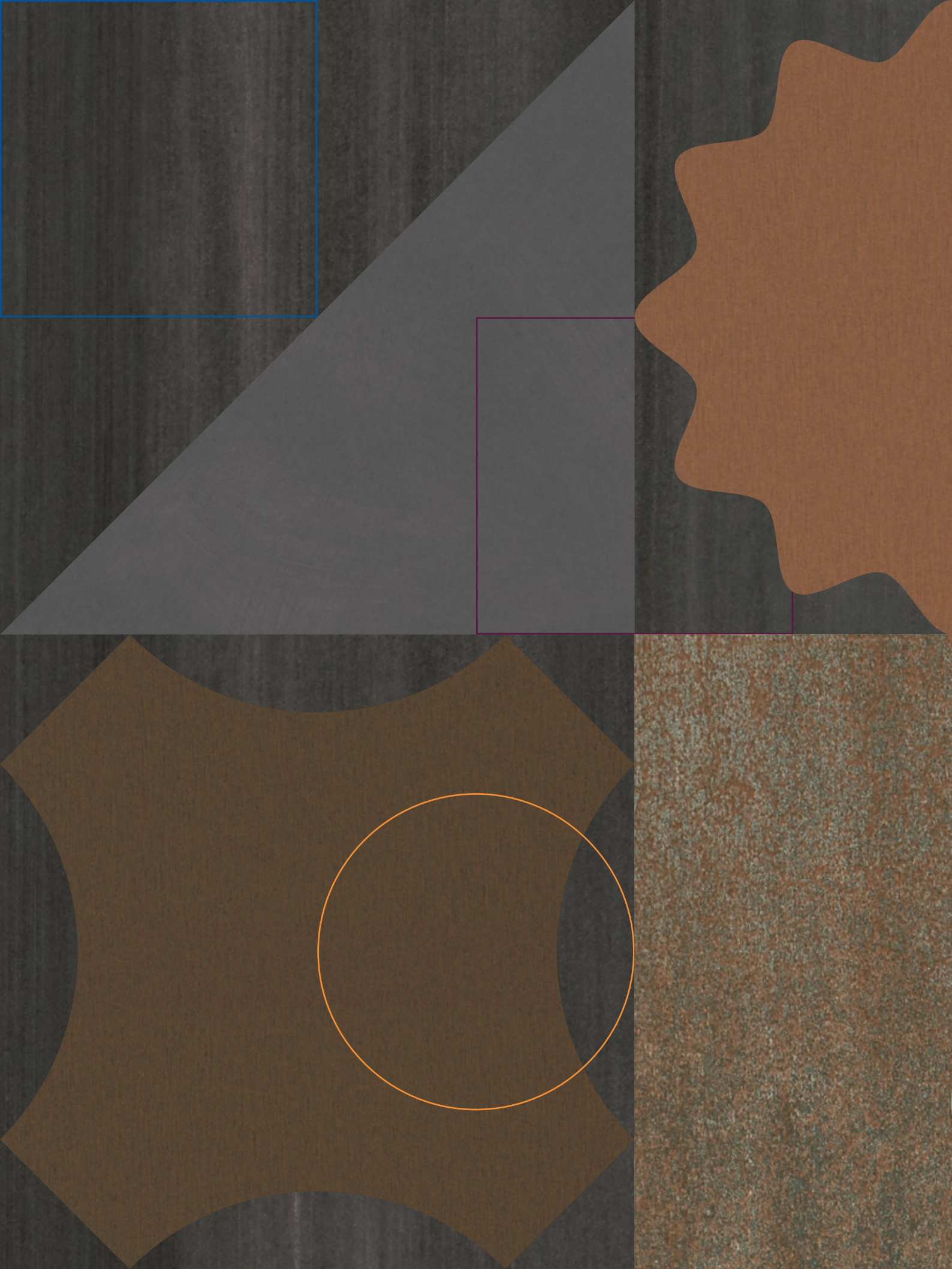
**F6351**  
Frosted Copper

Gloss



**F6353**  
Frosted Jade

Gloss





# Metal Effects

## Industrial Chic


Providing unquestionable appeal, the Metal Effects series takes inspiration from metals and materials with metallic finishes, adding an industrial touch to modern-day living.

Our new **Rolled** and **Blackened Steel** decors are based on a sheet of rolled steel, recoloured in cool dyed hues of blues and greys to give a contemporary twist and a more abstract appearance that has the look of metal, wood or even a large-scale linear graphic pattern.

Drawing inspiration from rustic patina effects, our new **Burnished Coin** and **Iron** decors feature an aesthetic of worn and rusted metal, hints of blue combined with warm metal tones display a seamless combination of past and present.

The Burnished decors provide a beautiful balance of tone, allowing each to work alongside a diverse spectrum of colour.

Expanding our popular **Brushed** decor palette, warmer tones of aged bronze and copper have been added to the collection creating a dynamic, stylish palette that will be sure to make a statement.



• F3708 Burnished Coin



# DUTTON HOUSE

F3	Cafeteria Rooms 8 - 10 Conference room
F2	Rooms 4 - 7 Restroom
F1	Rooms 1 - 3 Hall

● F5374 Elegant Oak

• F8837 Brushed Zinc





**F0193**  
Xenon                      Matte 58



**F8837**  
Brushed Zinc                      Matte 58



**F8859**  
Vintage Brush                      Matte 58



**F3735**  
Krypton                      Matte 58



**F3734**  
Radon                      Matte 58



**F7108**  
Saturn Brush                      Matte 58



**F7106**  
Oxide Brush                      Matte 58



**F7107**  
Comet Brush                      Matte 58



**F3708**  
Burnished Coin                      Arcosa



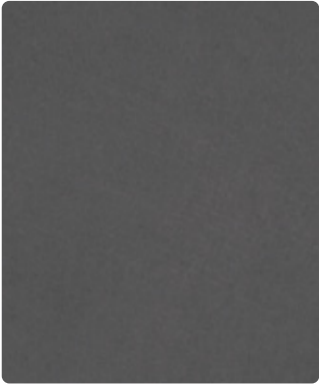
**F3709**  
Burnished Iron                      Arcosa



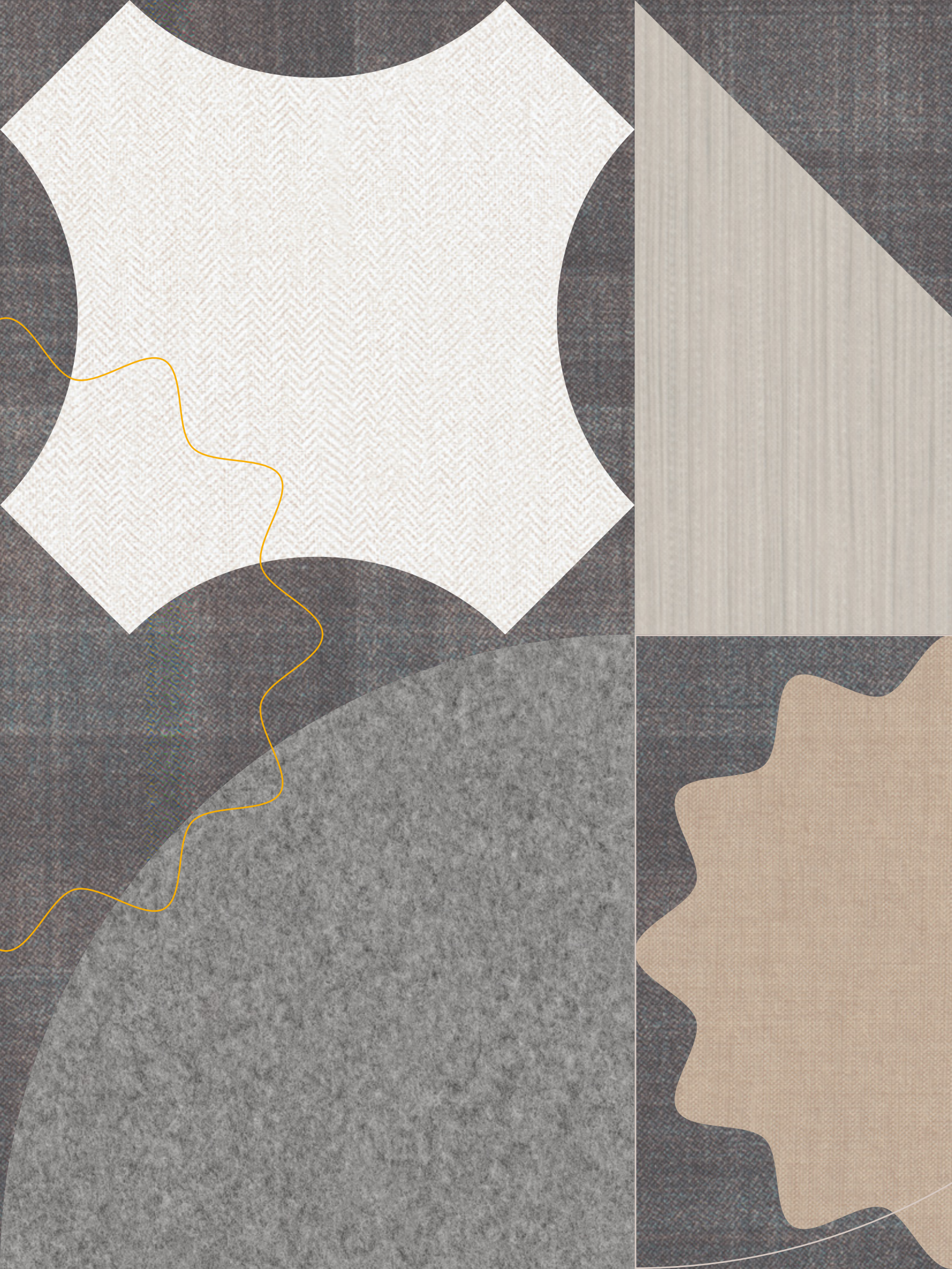
**F8917**  
Rolled Steel                      Matte 58



**F8918**  
Blackened Steel                      Matte 58



**F5583**  
Steel Metal                      Matte 58



# Textiles

## Classic Luxury with Modern Functionality

Textiles and fabrics are used extensively throughout building interiors, typically as soft furnishings to add warmth, tactility and to introduce pattern. The new Textile series extends the possibilities of where these looks can be used, with enhanced performance and functionality. Offering the appearance of textile materials, encapsulated in highly durable laminate, each decor is suitable for high traffic applications on tables, walls and furniture, blending classic luxury with modern functionality.

Turning attention to sophisticated fabrics typically seen in classic fashion garments, woven material inspired designs feature a multidirectional new **Flint Plaid** decor alongside a variety of neutral fabric tones. With monochrome linen weaves available in three complementary Textile decors, the palette effortlessly exudes understated sophistication. Breaking the boundaries of woven material, these classic and

structured textile designs are the perfect choice for environments where fabrics would not normally be practical.

Much like warp and weft yarns, our new **Cotton** and **Woolen Cloth** decors mirror the evolving classic of a woven twill. Each design showcases complex weaving through intricately detailed patterns that harmonise perfectly with the Woven palettes' bolder style.

With our highly adaptable but visually authentic new **Natural Gray Felt** decor, the office industry's ever popular felt material has undergone a revolutionary upgrade. The soft aesthetic of felt can now become a reality on a wider variety of vertical and horizontal applications.

No matter what the environment, the Textile series will turn design ideas into a reality, creating visual drama through material-inspired decors.

• F2770 Sarum Grey

• F9535 Flint Plaid





flint

● F8581 Quercus Marron



● F4971 Natural Gray Felt



Swatches displayed are shown at 1:1 scale



**F8826**  
Neutral Twill

Plex



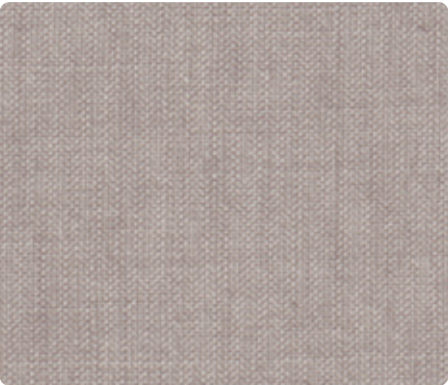
**F8827**  
Sarum Twill

Plex/Matte 58



**F8829**  
Graphite Twill

Plex



**F6445**  
Greige Textile

Plex



**F6444**  
Clay Textile

Plex



**F6446**  
Charcoal Textile

Plex



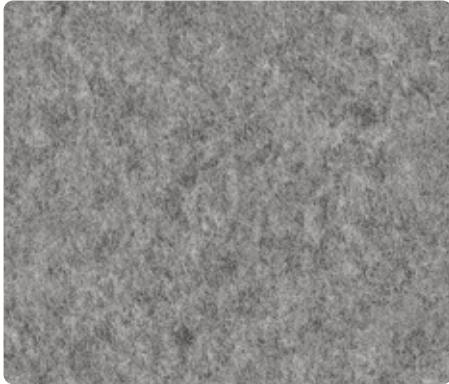
**F8682**  
Woolen Cloth

Plex



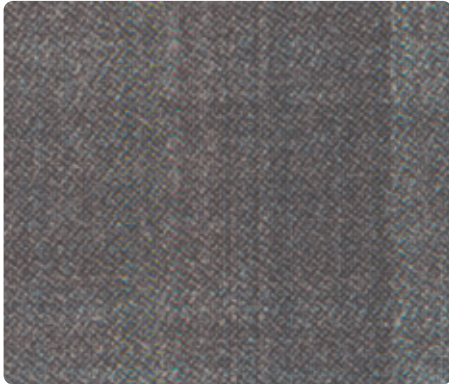
**F8681**  
Cotton Cloth

Plex



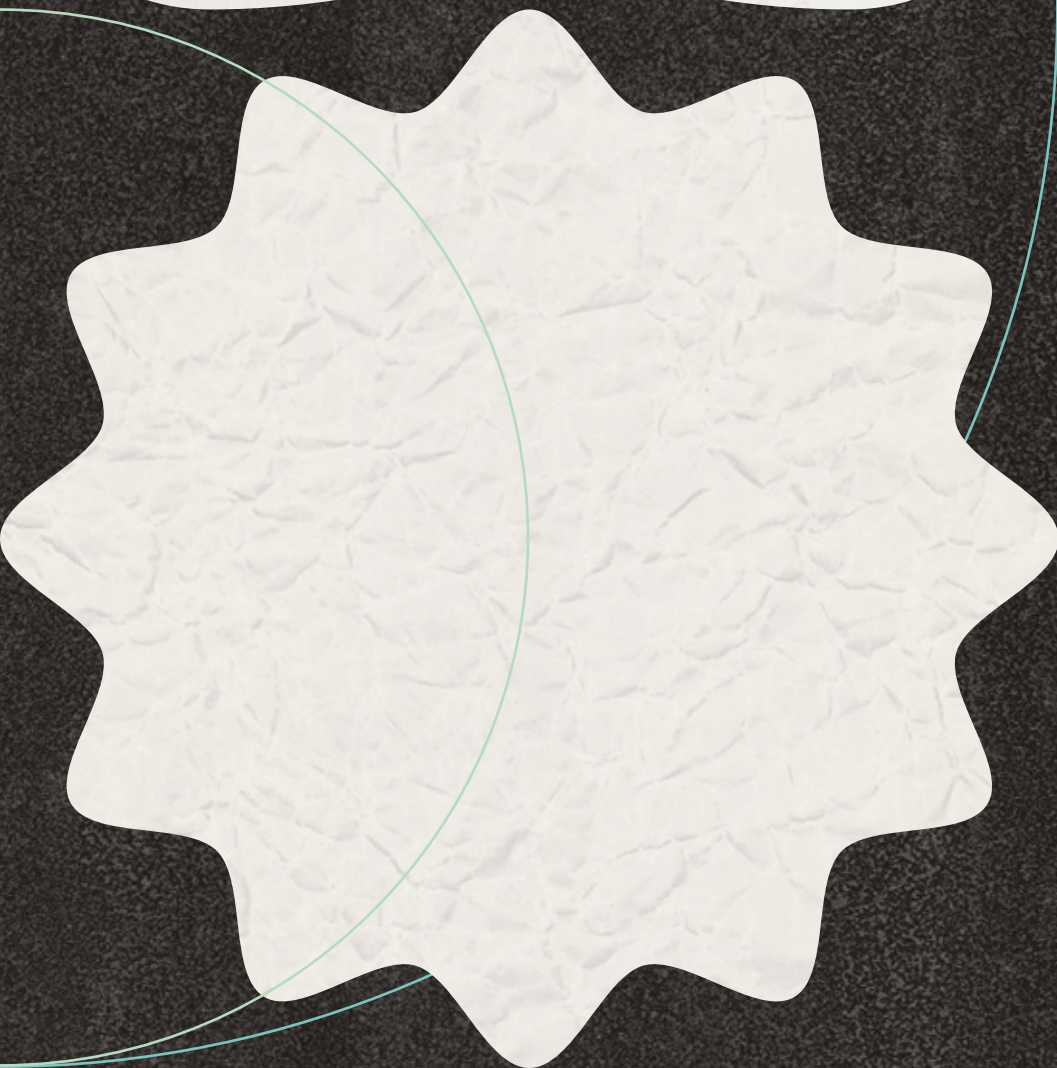
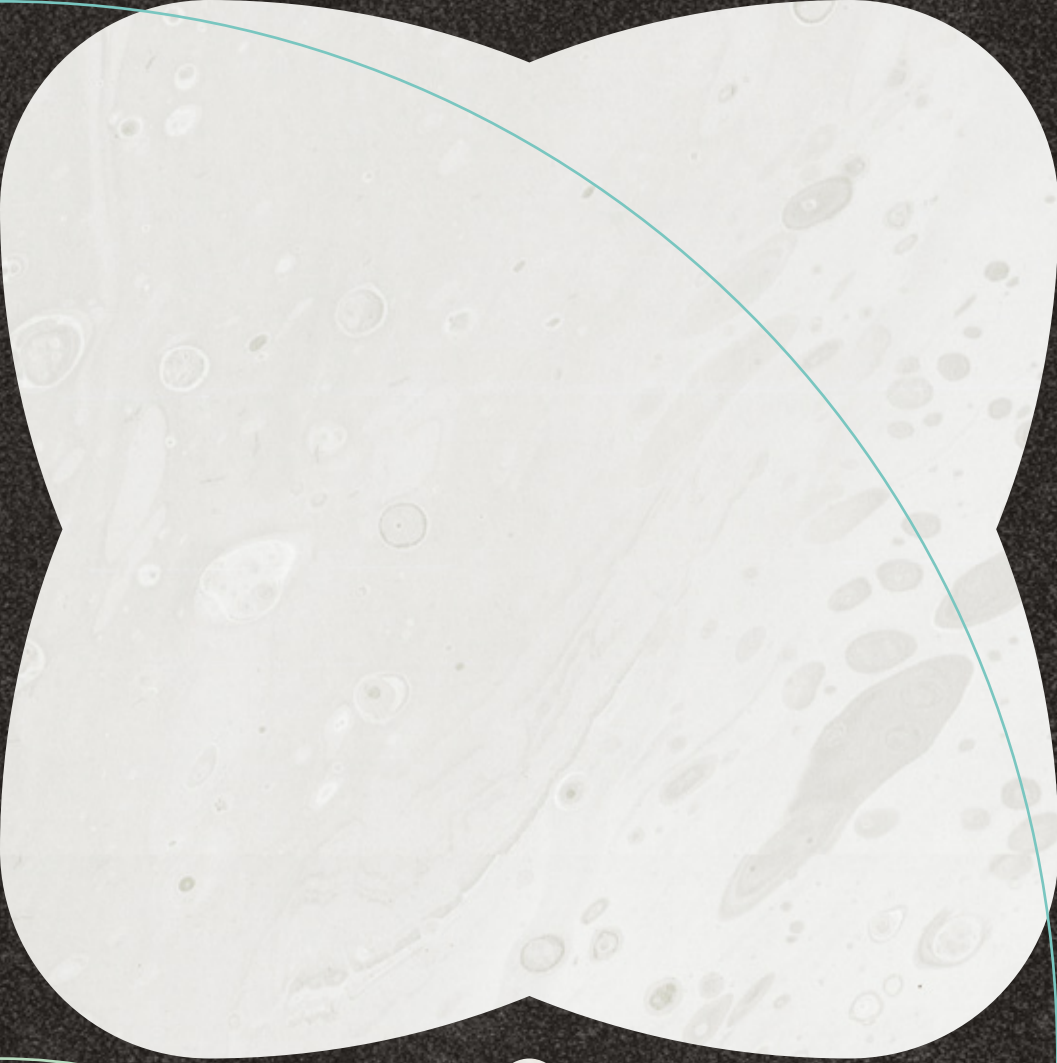
**F4971**  
Natural Gray Felt

Paper



**F9535**  
Flint Plaid

Plex



The background is a dark, textured surface with organic, flowing shapes. A large, light-colored, textured shape is on the left side. A thin, teal-colored line curves across the top and middle of the page. In the bottom right corner, a thin yellow line extends diagonally.

# Abstracts

## Hand Crafted Elegance

Inspired by the natural world, but 100% Formica® brand original artworks, the Abstract series decors have been exclusively hand-designed.

Connecting with ancient architectural techniques, our new **Layered Sand** and **Layered Black Sand** decors beautifully capture the truly unique natural elegance of sand through mesmerising artistic patterns. A large-scale rammed earth inspired design, the Layered Sands present an organic visual appeal that can create a calming and peaceful interior environment.

Our new **Black** and **White Painted Marble** decors add a special touch to the series. These designs were hand painted by a commissioned artist and embody the art of marbling. Water and ink are mixed resulting in a beautiful and sophisticated watercolour design.

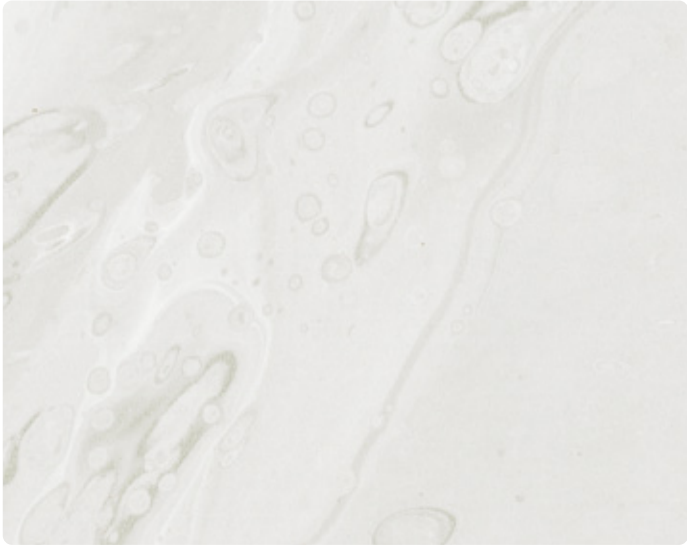
The Painted Marble decors give a fluid and abstract appearance reminiscent of natural stones, but also highlight the unique craftsmanship involved in their creation.

Paying tribute to laminate as a paper-based material, our new **Starched Paperfold** decor takes the concept of beauty in imperfection to new levels. Crushed paper has been carefully unfolded to reveal organic and abstract fold marks. In addition to its aesthetic of paper, the design provides a hybrid quality with a structure resembling that of a simple marble pattern. New to the collection, **Paper texture** has been expertly combined to add the perfect finishing touch.

The Abstract series is sure to captivate the senses and will leave an original and lasting impression to an interior space.

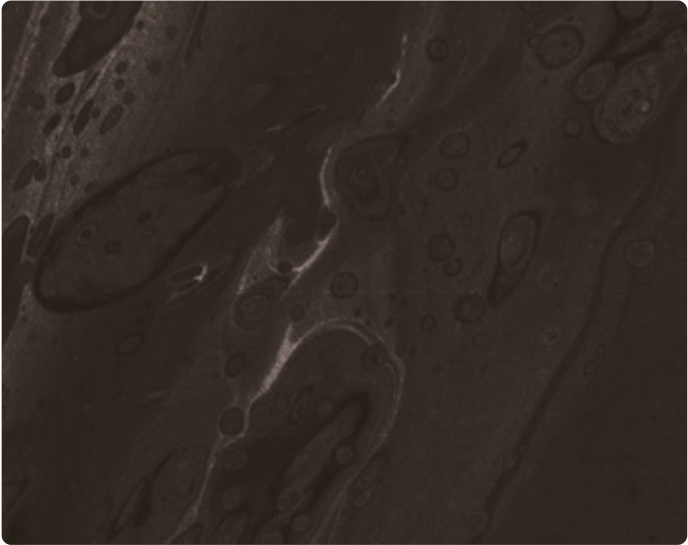


● F9511 Layered Sand



**F5014**  
White Painted Marble

Satin NDF



**F5015**  
Black Painted Marble

Satin NDF



**F9511**  
Layered Sand

Arcosa



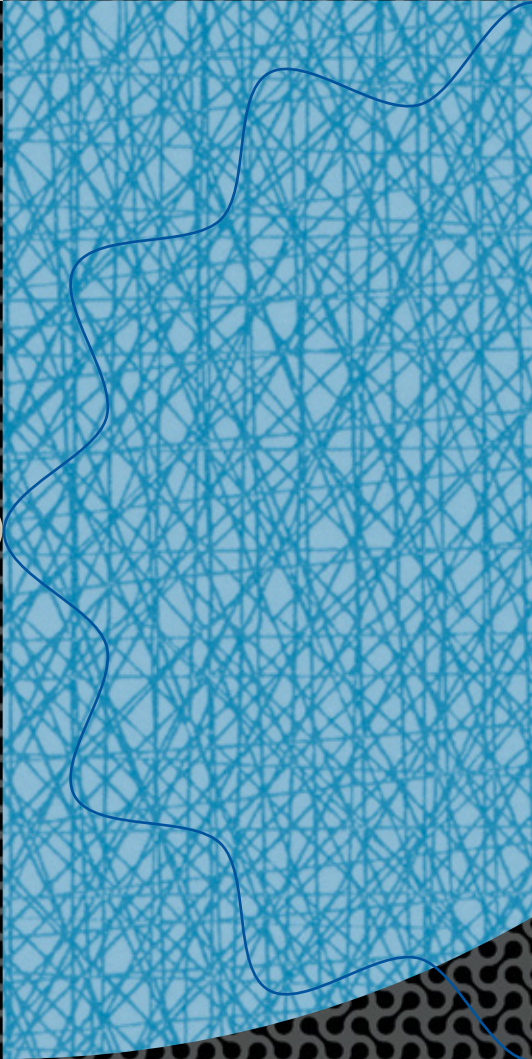
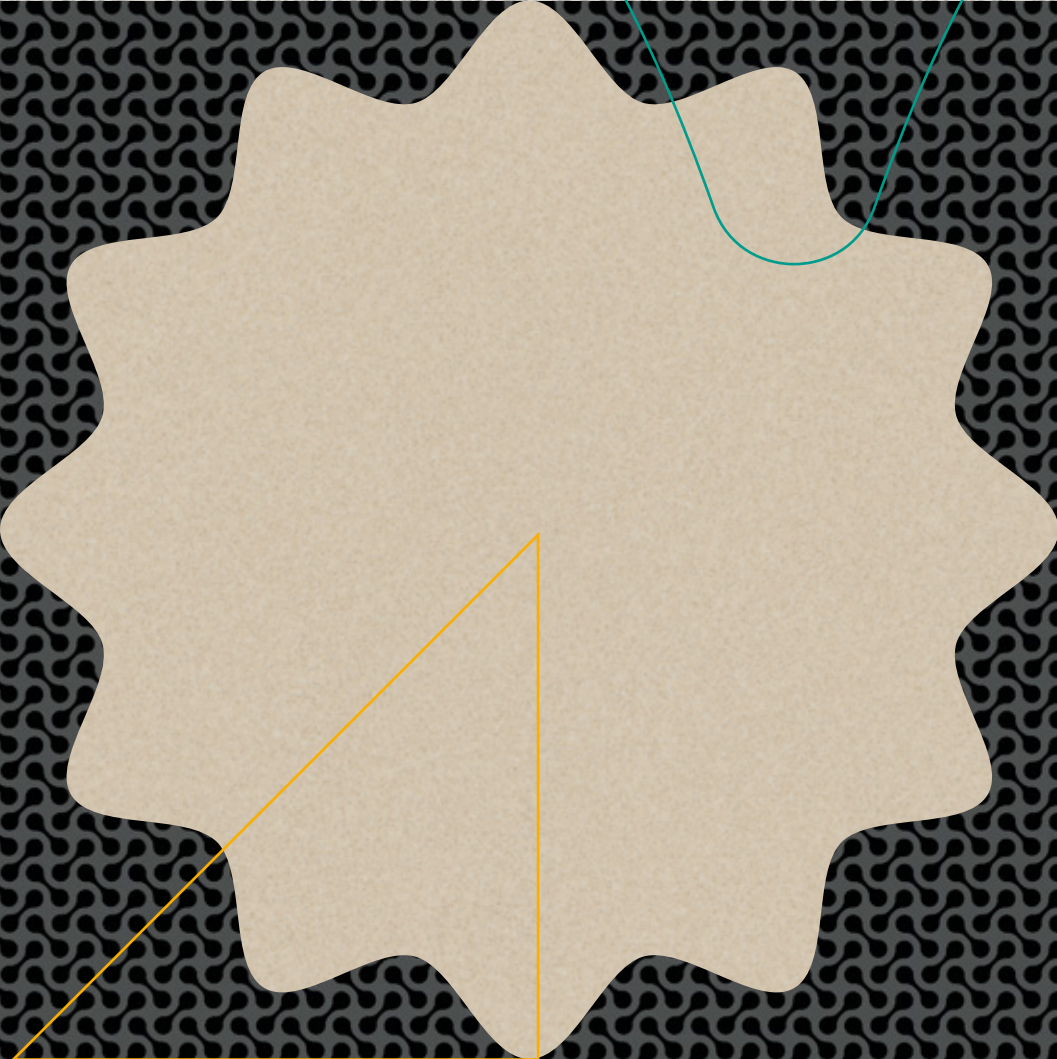
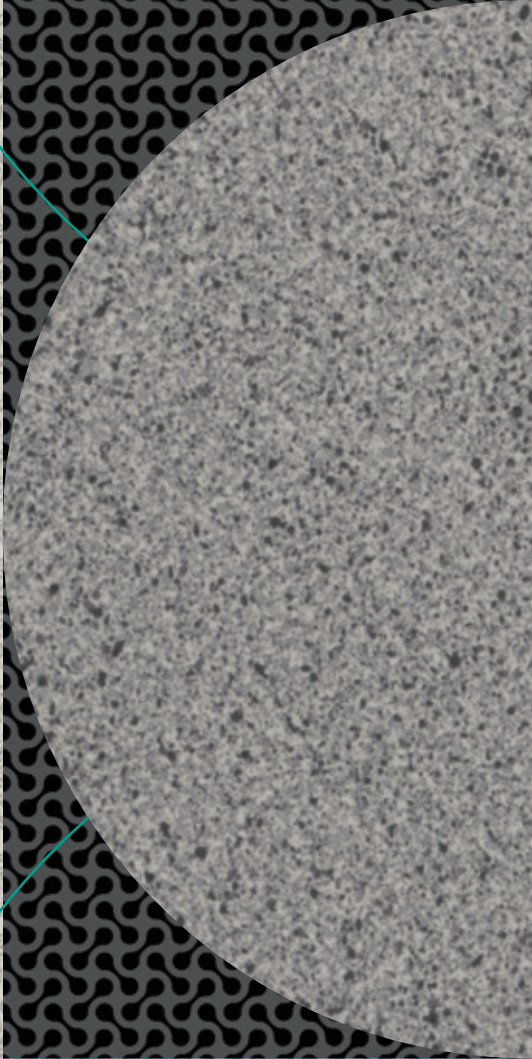
**F9510**  
Layered Black Sand

Arcosa



**F8678**  
Starched Paperfold

Paper





# Geo-optics

## Bold Graphic Patterns & Optical Solids

Inspired by intricate patterns and abstract shapes, the Geo-optics series celebrates the Formica® brand heritage for bold graphic pattern.

Designs within the series have been carefully curated, featuring micro-scale patterns that combine retro themes with the modern flair of abstract art.

From a vivid pop of colour to muted tones, the Geo-optic series offers an adaptable palette to bring just the right balance to an interior.

The Geo-optic series is the perfect range to create an eye-catching focal point through geometric shapes and pattern.



• F6944 VirrVarr Blue

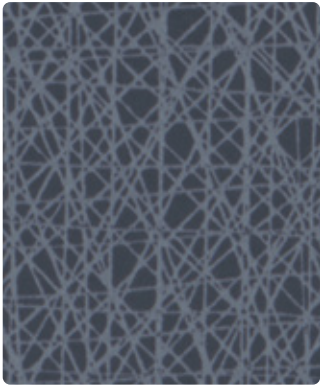
• F6945 VirrVarr Black

• F6943 VirrVarr White

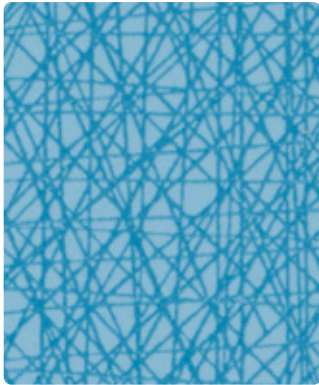




**F6943**  
VirrVarr White      Matte 58



**F6945**  
VirrVarr Black      Matte 58



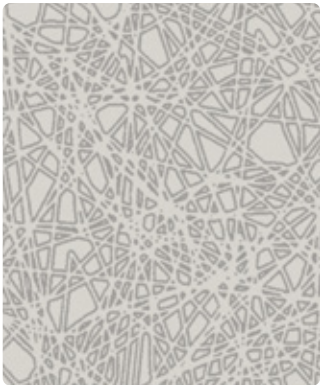
**F6944**  
VirrVarr Blue      Matte 58



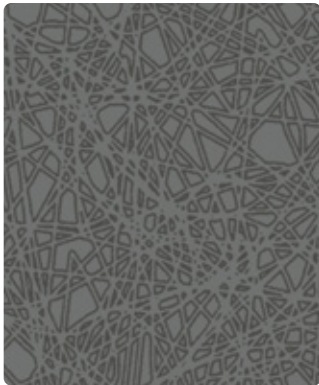
**F5281**  
Dogbone White      Matte 58



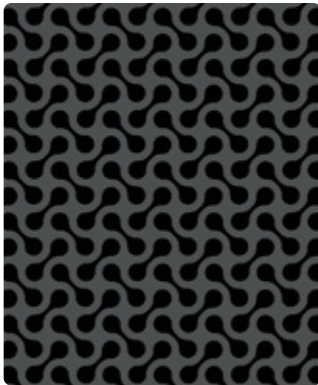
**F5270**  
Geo White      Matte 58



**F5272**  
Geo Folkestone      Matte 58



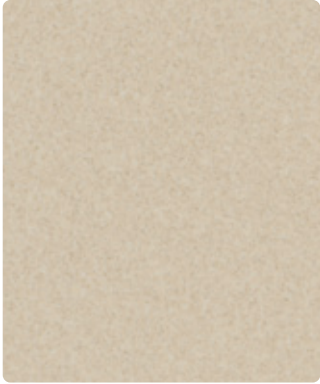
**F5273**  
Geo Citadel      Matte 58



**F5283**  
Dogbone Storm      Matte 58



**F7507**  
Folkestone Grafix      Matte 58



**F7517**  
Almond Grafix      Matte 58



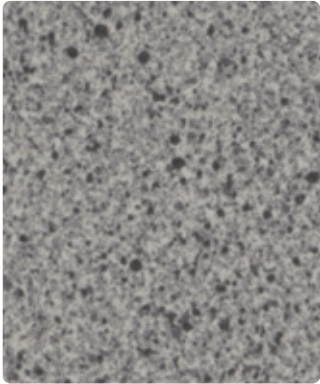
**F7508**  
Mouse Grafix      Matte 58



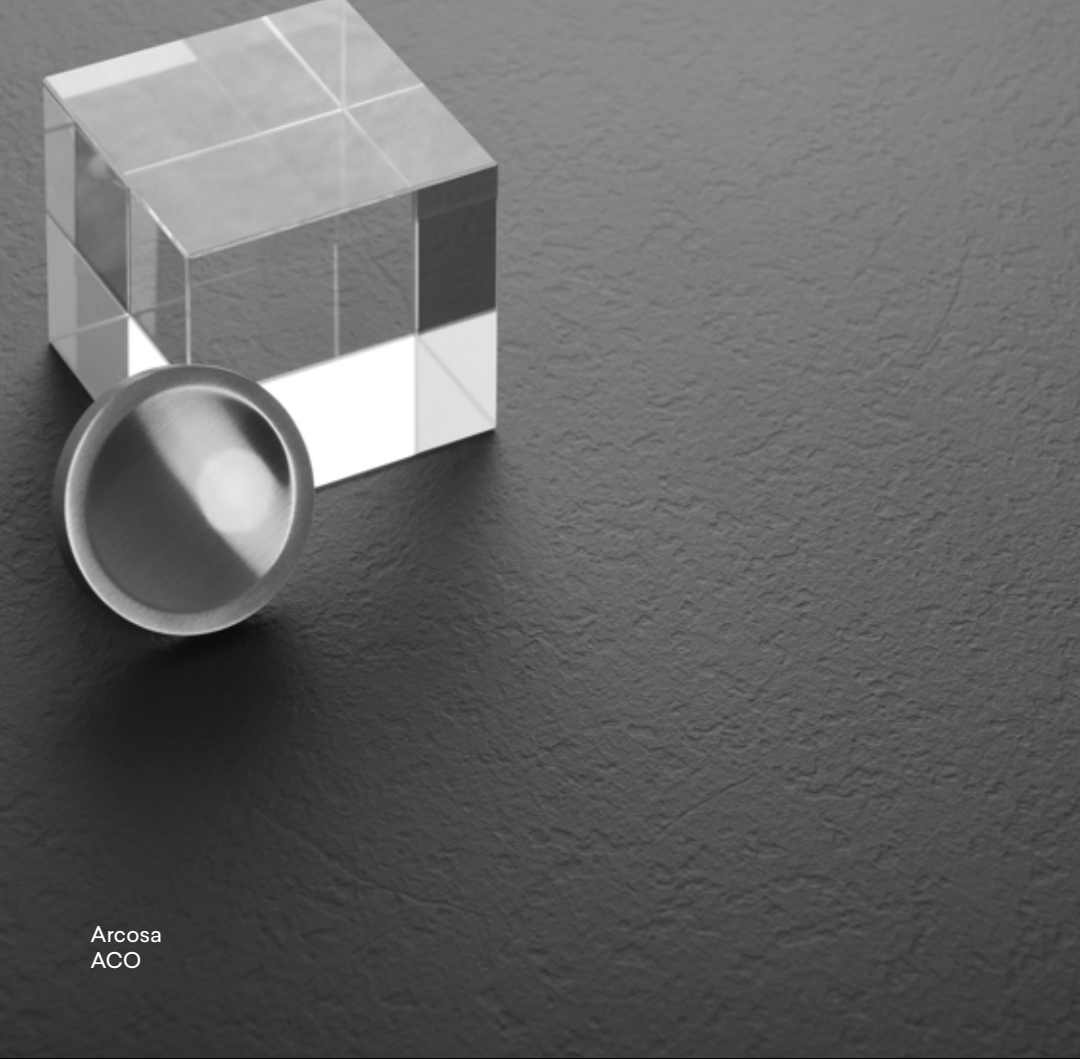
**F7515**  
Graphite Grafix      Matte 58



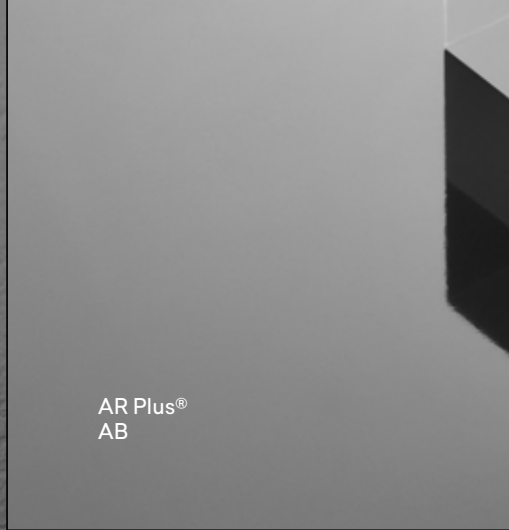
**F1936**  
Lava Dust      Matte 58



**F1787**  
Grey Dust      Matte 58



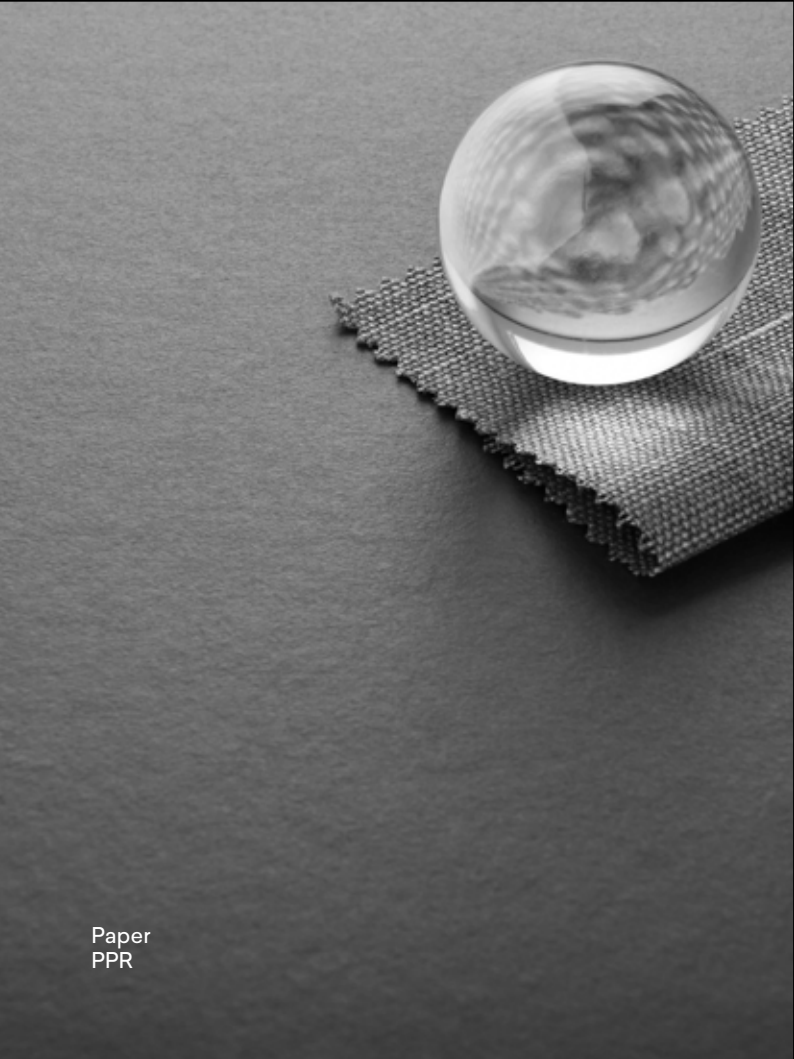
Arcosa  
ACO



AR Plus®  
AB



Gloss  
GLS



Matte 58  
MAT

Paper  
PPR



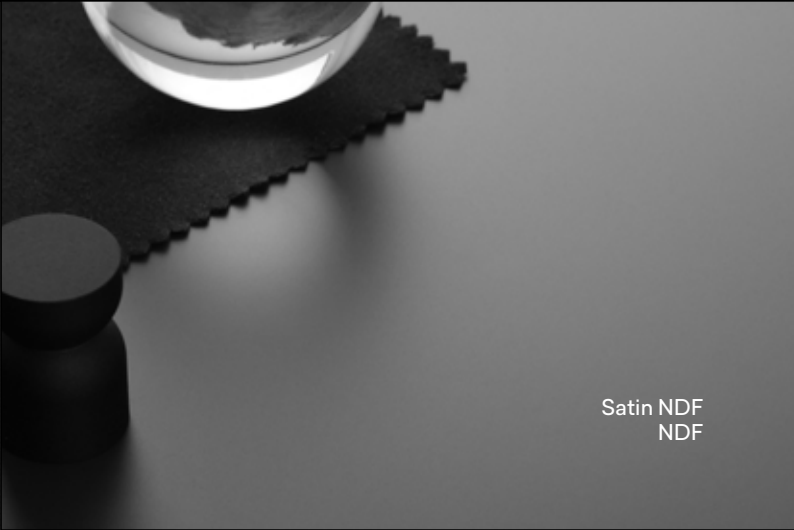
Essence  
ESC



Monolith  
MON



Plex  
PLX



Satin NDF  
NDF



Honed  
AHD

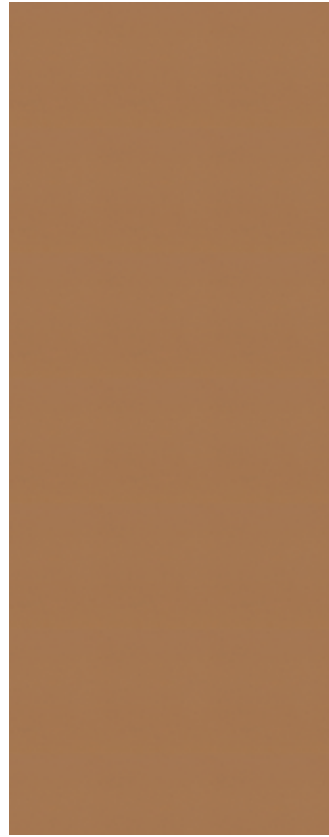
## Full sheet layouts



**F8812**  
Tinted Paper Terrazzo PPR



**F8813**  
Tonal Paper Terrazzo PPR



**F9684**  
Natural Recycled Kraft ESC



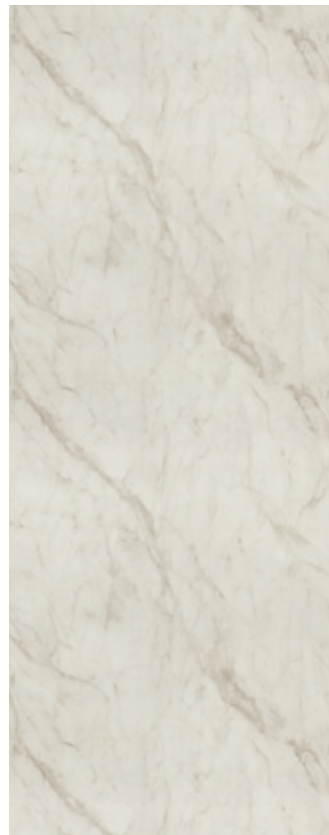
**F9685**  
Black Recycled Kraft ESC



**F9271**  
Reclaimed Denim Fiber PLX



**F3460**  
Calacatta Marble AB



**F5018**  
Calacatta Cava NDF



**F3421**  
Bianca Luna NDF

Full sheet layouts displayed are shown at approx 1:28 scale and are representative of a 3050x1300mm sheet size



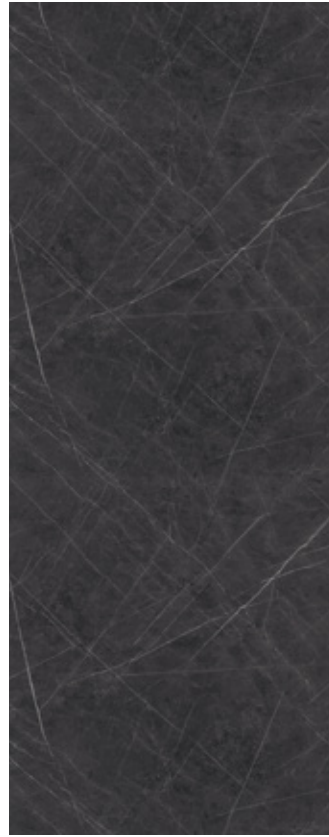
**F3458**  
Travertine Silver

AB



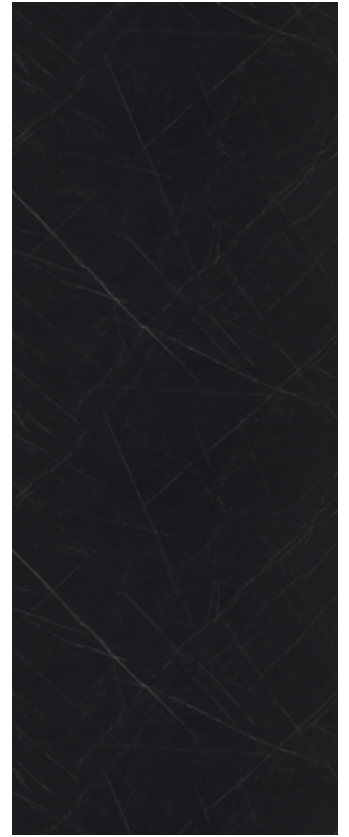
**F7402**  
Pietra Grafite

NDF



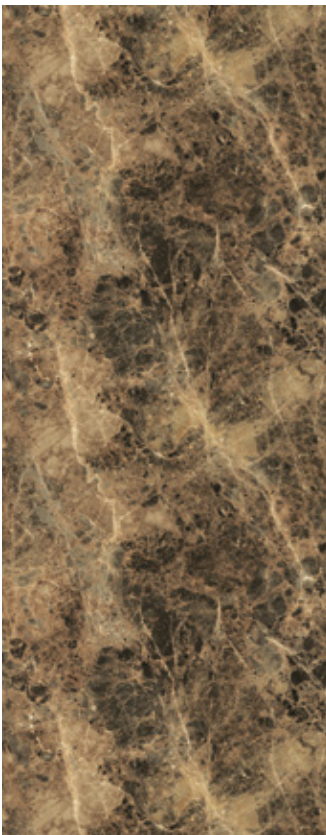
**F9483**  
Ferro Grafite

NDF



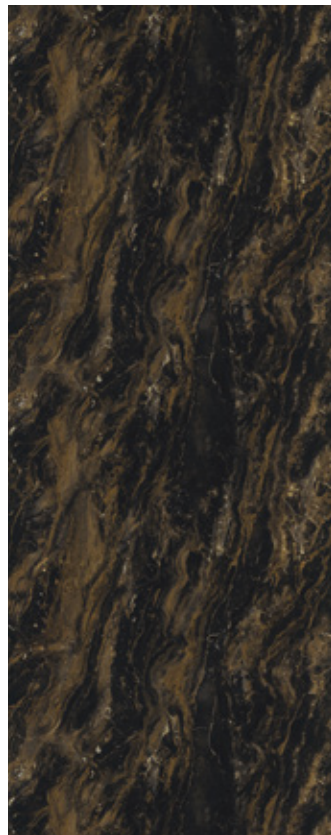
**F9485**  
Nero Grafite

NDF



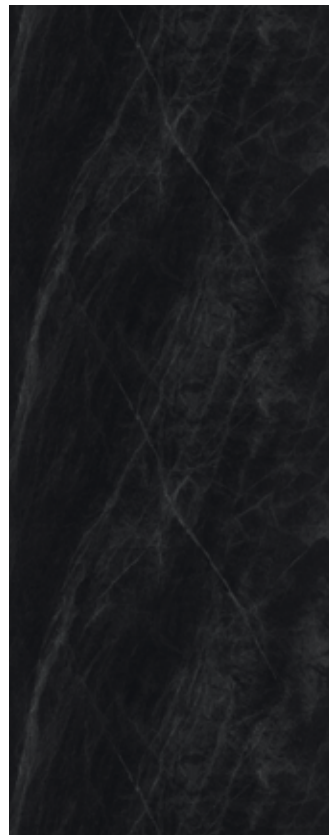
**F3457**  
Breccia Paradiso

AB



**F9482**  
Marbled Cappuccino

AB



**F3476**  
Jet Sequoia

AB



**F7403**  
Nero Marquina

NDF

## Full sheet layouts



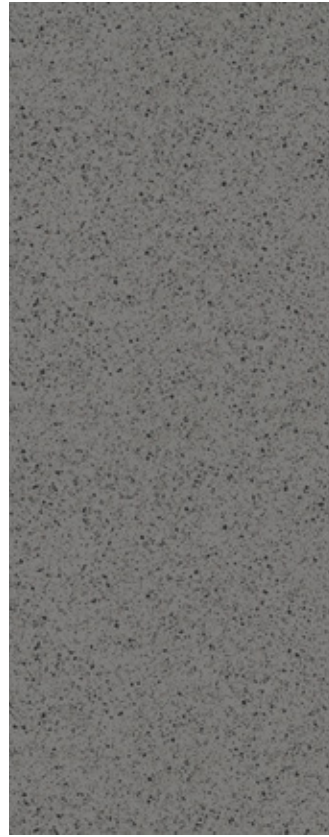
**F8381**  
Spectra Chip

NDF



**F8382**  
White Chip

NDF



**F8372**  
Grey Chip

NDF



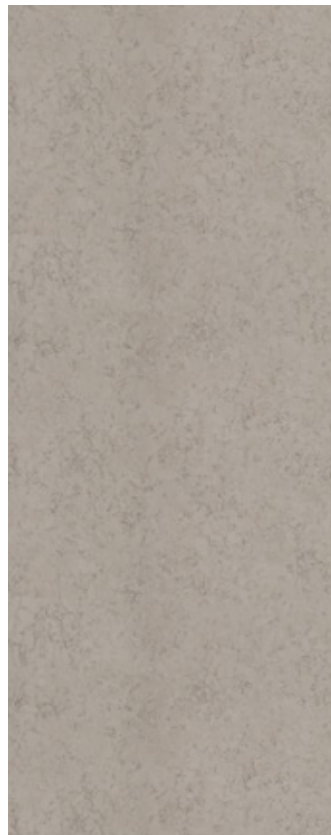
**F8387**  
Black Chip

NDF



**F6314**  
Neo Cloud

NDF



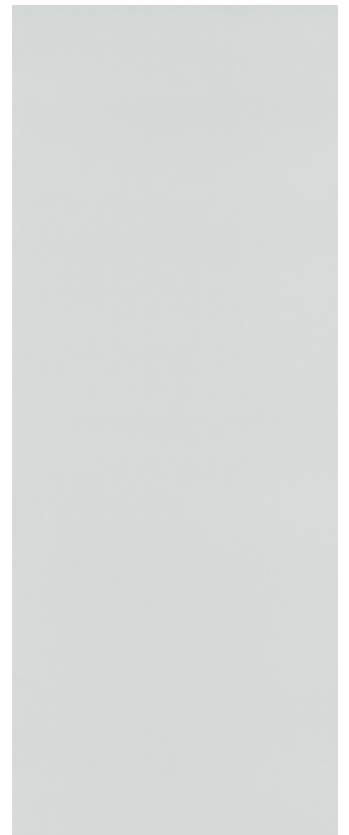
**F6316**  
Neo Tornado

NDF



**F6315**  
Neo Cyclone

NDF



**F6698**  
Paloma Polar

MAT

Full sheet layouts displayed are shown at approx 1:28 scale and are representative of a 3050x1300mm sheet size



**F6724**  
Paloma Folkestone MAT



**F6728**  
Paloma Jade MAT



**F6363**  
Elemental Ash AHD



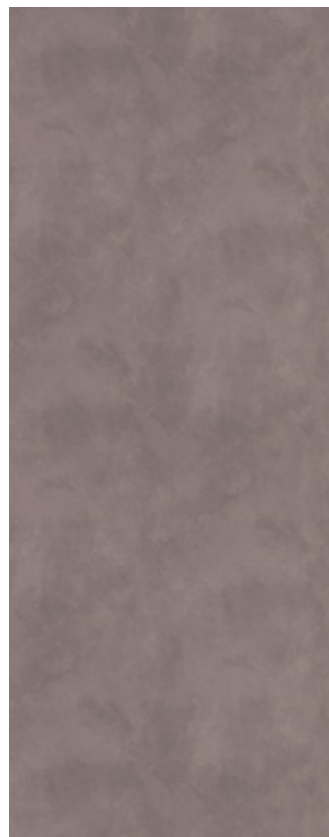
**F8830**  
Elemental Concrete AHD



**F8833**  
Elemental Graphite AHD



**F8832**  
Elemental Corten AHD



**F5936**  
Lulworth Flint ACO

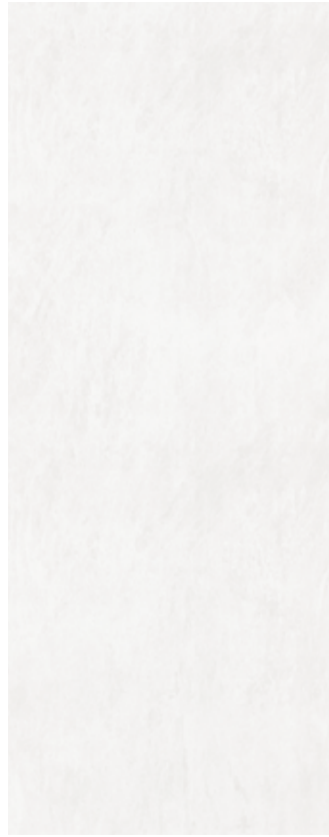


**F5935**  
Purbeck Flint ACO

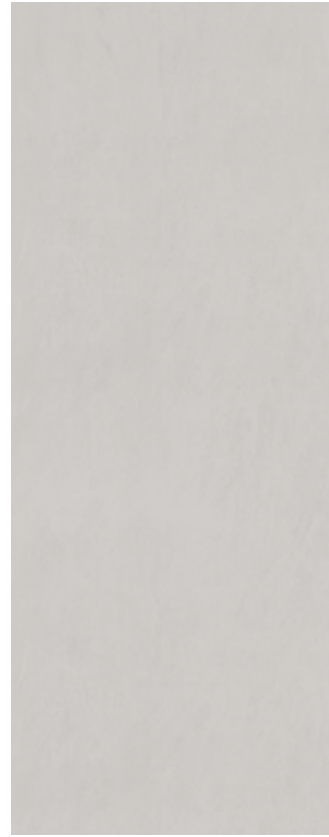
## Full sheet layouts



**F6362**  
Concrete Formwood      AHD



**F2255**  
Polar White Monolith      MON



**F7927**  
Folkestone Monolith      MON



**F7837**  
Graphite Monolith      MON



**F7923**  
Surf Monolith      MON



**F1994**  
Fox Monolith      MON



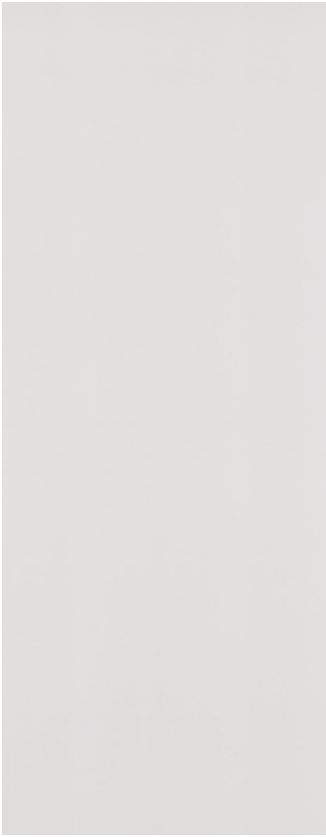
**F8793**  
Green Slate Monolith      MON



**F6353**  
Frosted Jade      GLS

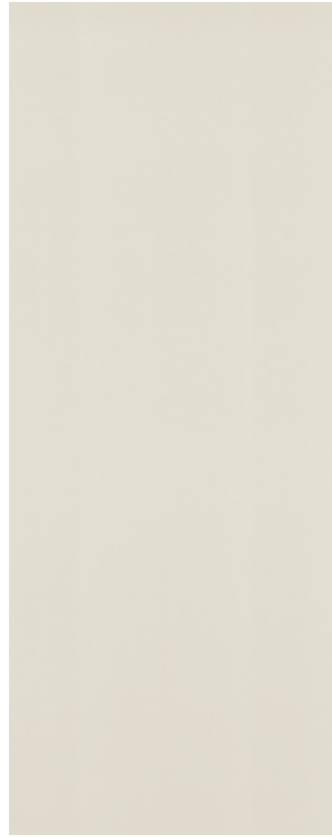


Full sheet layouts displayed are shown at approx 1:28 scale and are representative of a 3050x1300mm sheet size



**F6350**  
Frosted Dusk

GLS



**F6349**  
Frosted Pearl

GLS



**F6352**  
Frosted Gold

GLS



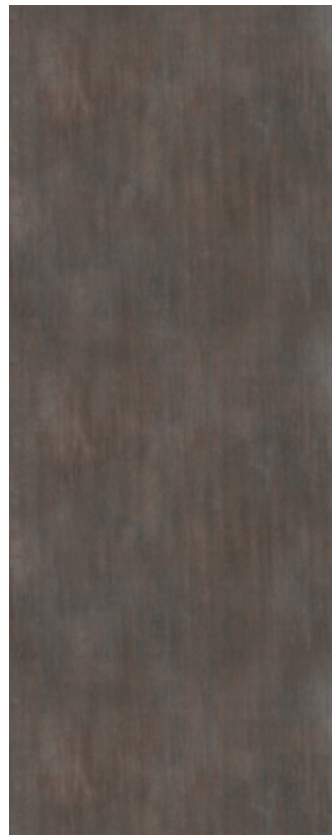
**F6351**  
Frosted Copper

GLS



**F3708**  
Burnished Coin

ACO



**F3709**  
Burnished Iron

ACO



**F8917**  
Rolled Steel

MAT



**F8918**  
Blackened Steel

MAT

## Full sheet layouts



**F7108**  
Saturn Brush

MAT



**F7106**  
Oxide Brush

MAT



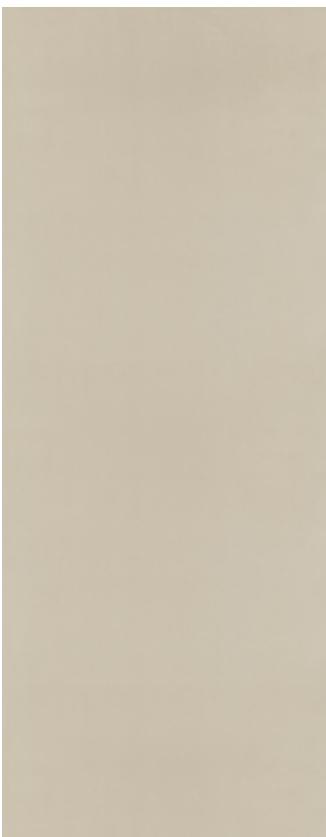
**F7107**  
Comet Brush

MAT



**F0193**  
Xenon

MAT



**F8837**  
Brushed Zinc

MAT



**F8859**  
Vintage Brush

MAT



**F3735**  
Krypton

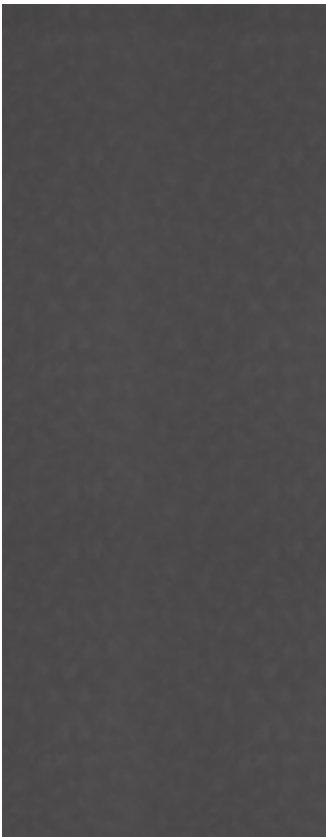
MAT



**F3734**  
Radon

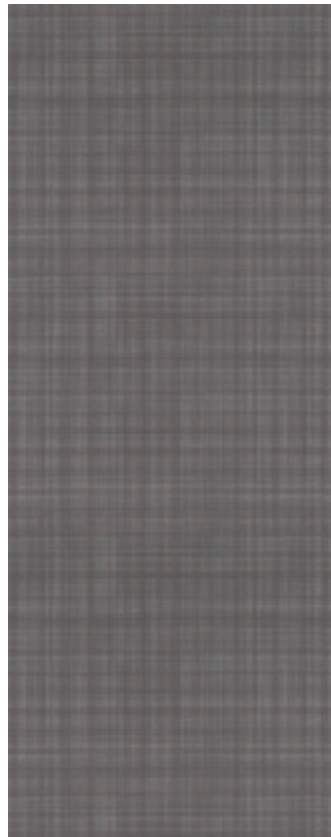
MAT

Full sheet layouts displayed are shown at approx 1:28 scale and are representative of a 3050x1300mm sheet size



**F5583**  
Steel Metal

MAT



**F9535**  
Flint Plaid

PLX



**F6445**  
Greige Textile

PLX



**F6444**  
Clay Textile

PLX



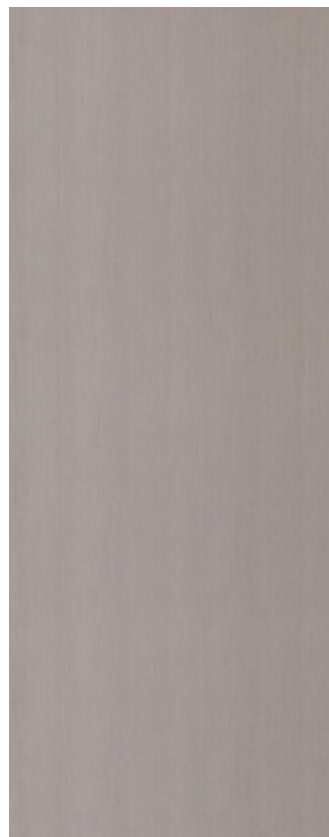
**F6446**  
Charcoal Textile

PLX



**F8826**  
Neutral Twill

PLX



**F8827**  
Sarum Twill

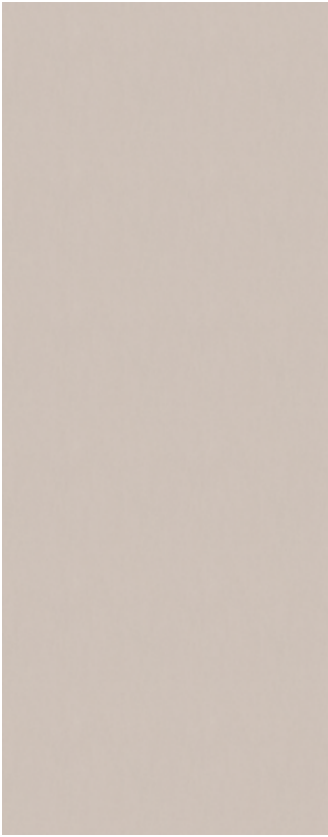
PLX/MAT



**F8829**  
Graphite Twill

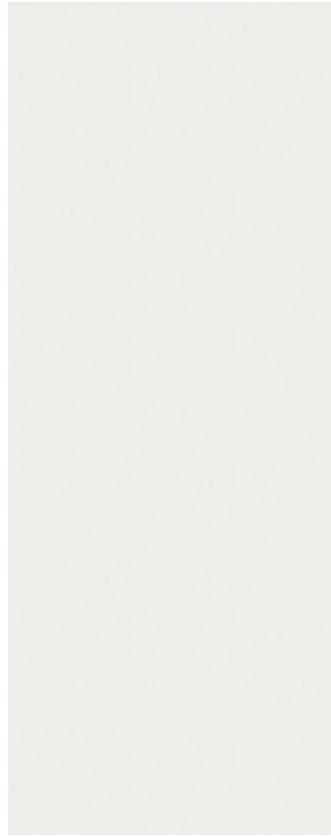
PLX

## Full sheet layouts



**F8682**  
Woolen Cloth

PLX



**F8681**  
Cotton Cloth

PLX



**F4971**  
Natural Gray Felt

PPR



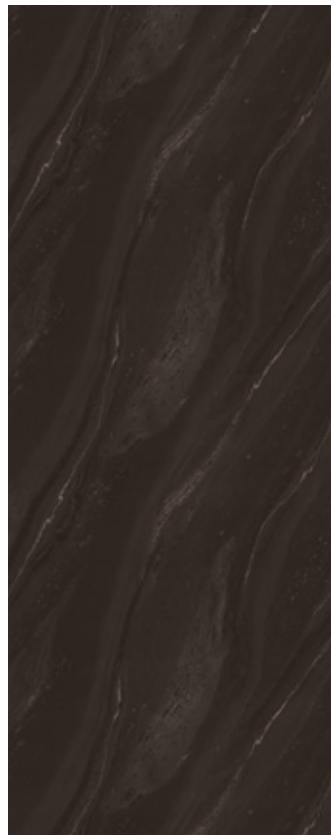
**F8678**  
Starched Paperfold

PPR



**F5014**  
White Painted Marble

NDF



**F5015**  
Black Painted Marble

NDF



**F9511**  
Layered Sand

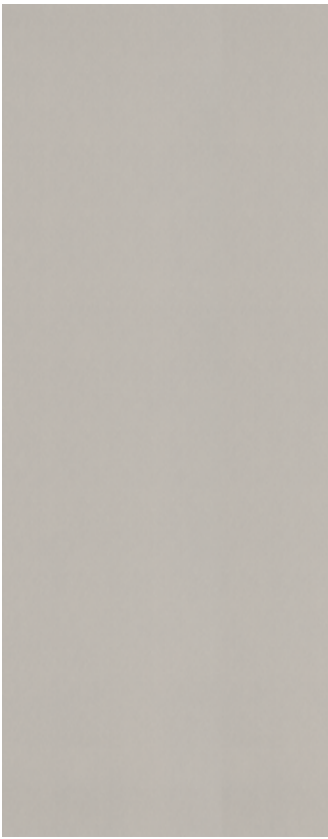
ACO



**F9510**  
Layered Black Sand

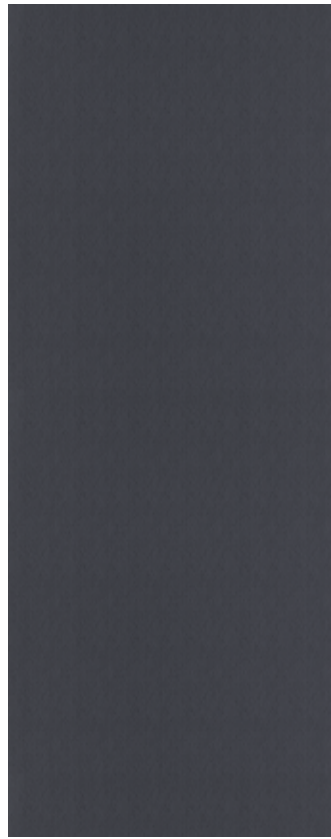
ACO

Full sheet layouts displayed are shown at approx 1:28 scale and are representative of a 3050x1300mm sheet size



**F6943**  
VirrVarr White

MAT



**F6945**  
VirrVarr Black

MAT



**F6944**  
VirrVarr Blue

MAT



**F5270**  
Geo White

MAT



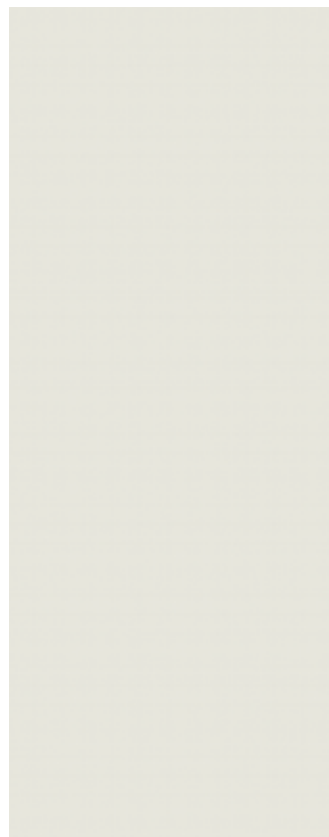
**F5272**  
Geo Folkestone

MAT



**F5273**  
Geo Citadel

MAT



**F5281**  
Dogbone White

MAT



**F5283**  
Dogbone Storm

MAT

# Full sheet layouts

Full sheet layouts displayed are shown at approx 1:28 scale and are representative of a 3050x1300mm sheet size



**F7507**  
Folkestone Grafix MAT



**F7517**  
Almond Grafix MAT



**F7508**  
Mouse Grafix MAT



**F7515**  
Graphite Grafix MAT



**F1936**  
Lava Dust MAT



**F1787**  
Grey Dust MAT



● F9535 Flint Plaid

# Patterns

## Sheet size (mm)

3050x1300

2150x950

2350x950

2350x1300

3660x1525

3600x1400

Code	Decor	LRV	Grade: HGP CGS	Grade: PAR PAR CGS	Grade: ATP ACS	Grade: HGS	Grade: HGS CGS	Grade: HGS CGS	Grade: HGS CGS	Grade: HGP CGS	Grade: HGP CGS	Grade: PAR PAR CGS
F0193	Xenon	47.2	MAT	-	-	-	MAT	MAT	MAT	MAT	-	-
F1787	Grey Dust	37.0	MAT	-	-	-	-	-	-	-	-	-
F1936	Lava Dust	60.0	MAT	-	-	-	-	-	-	-	-	-
F1994	Fox	42.4	MON*	-	-	-	-	-	-	-	MON	-
F2255	Polar White	85.7	MON*	-	-	-	-	-	-	-	MON	-
F3421	Bianca Luna	65.0	NDF	-	-	-	-	-	-	-	NDF	-
F3457	Breccia Paradiso	23.1	-	AB	-	-	-	-	-	-	-	AB
F3458	Travertine Silver	51.3	-	AB	-	-	-	-	-	-	-	AB
F3460	Calacatta Marble	63.8	-	AB	-	-	-	-	-	-	-	AB
F3476	Jet Sequoia	8.6	-	AB	-	-	-	-	-	-	-	AB
F3708	Burnished Coin	18.0	ACO	-	-	-	-	-	-	-	-	-
F3709	Burnished Iron	12.8	ACO	-	-	-	-	-	-	-	-	-
F3734	Radon	18.7	MAT	-	-	-	MAT	MAT	MAT	MAT	-	-
F3735	Krypton	35.3	MAT	-	-	-	MAT	MAT	MAT	-	-	-
F4971	Natural Gray Felt	26.0	PPR*	-	-	-	-	-	-	-	-	-
F5014	White Painted Marble	64.8	NDF	-	-	-	-	-	-	-	-	-
F5015	Black Painted Marble	7.6	NDF	-	-	-	-	-	-	-	-	-
F5018	Calacatta Cava	63.0	NDF	-	-	-	-	-	-	-	NDF	-
F5270	Geo White	69.1	MAT	-	-	-	-	-	-	-	-	-
F5272	Geo Folkestone	43.9	MAT	-	-	-	-	-	-	-	-	-
F5273	Geo Citadel	16.4	MAT	-	-	-	-	-	-	-	-	-
F5281	Dogbone White	71.5	MAT	-	-	-	-	-	-	-	-	-
F5283	Dogbone Storm	11.0	MAT	-	-	-	-	-	-	-	-	-
F5583	Steel Metal	22.9	MAT	-	-	-	MAT	MAT	MAT	-	-	-
F5935	Purbeck Flint	16.3	ACO	-	-	-	-	-	-	-	-	-
F5936	Lulworth Flint	21.9	ACO	-	-	-	-	-	-	-	-	-
F6314	Neo Cloud	61.1	NDF	-	-	-	-	-	-	-	-	-
F6315	Neo Cyclone	17.8	NDF	-	-	-	-	-	-	-	-	-
F6316	Neo Tornado	26.3	NDF	-	-	-	-	-	-	-	-	-
F6349	Frosted Pearl	78.2	-	-	GLS	-	-	-	-	-	-	-
F6350	Frosted Dusk	43.5	-	-	GLS	-	-	-	-	-	-	-
F6351	Frosted Copper	26.5	-	-	GLS	-	-	-	-	-	-	-
F6352	Frosted Gold	49.5	-	-	GLS	-	-	-	-	-	-	-
F6353	Frosted Jade	38.5	-	-	GLS	-	-	-	-	-	-	-
F6362	Concrete Formwood	49.0	AHD	-	-	-	-	-	-	-	-	-
F6363	Elemental Ash	53.0	AHD	-	-	-	-	-	-	-	-	-
F6444	Clay Textile	42.1	PLX	-	-	-	-	-	-	-	-	-
F6445	Greige Textile	38.9	PLX	-	-	-	-	-	-	-	-	-
F6446	Charcoal Textile	18.3	PLX	-	-	-	-	-	-	-	-	-
F6698	Paloma Polar	72.9	MAT	-	-	-	-	-	-	-	-	-
F6724	Paloma Folkestone	51.8	MAT	-	-	-	-	-	-	-	-	-
F6728	Paloma Jade	49.7	MAT	-	-	-	-	-	-	-	-	-
F6943	VirrVarr White	63.6	MAT	-	-	-	-	-	-	-	-	-

\* Only available in HGP



# Patterns

## Sheet size (mm)

3050x1300

2150x950

2350x950

2350x1300

3660x1525

3600x1400

Code	Decor	LRV	Grade: HGP CGS	Grade: PAR PAR CGS	Grade: ATP ACS	Grade: HGS	Grade: HGS CGS	Grade: HGS CGS	Grade: HGS CGS	Grade: HGP CGS	Grade: HGP CGS	Grade: PAR PAR CGS
F6944	VirrVarr Blue	32.9	MAT	-	-	-	-	-	-	-	-	-
F6945	VirrVarr Black	16.7	MAT	-	-	-	-	-	-	-	-	-
F7106	Oxide Brush	11.0	MAT	-	-	-	-	-	-	-	-	-
F7107	Comet Brush	19.3	MAT	-	-	-	-	-	-	-	-	-
F7108	Saturn Brush	11.2	MAT	-	-	-	-	-	-	-	-	-
F7402	Pietra Grafite	53.7	NDF	-	-	-	-	-	-	-	NDF	-
F7403	Nero Marquina	10.0	NDF	-	-	-	-	-	-	-	NDF	-
F7507	Folkestone Grafix	53.7	MAT	-	-	-	-	-	-	-	-	-
F7508	Mouse Grafix	30.0	MAT	-	-	-	-	-	-	-	-	-
F7515	Graphite Grafix	11.9	MAT	-	-	-	-	-	-	-	-	-
F7517	Almond Grafix	62.3	MAT	-	-	-	-	-	-	-	-	-
F7837	Graphite	10.8	MON*	-	-	-	-	-	-	-	MON	-
F7923	Surf	69.4	MON*	-	-	-	-	-	-	-	MON	-
F7927	Folkestone	53.5	MON*	-	-	-	-	-	-	-	MON	-
F8372	Grey Chip	20.6	NDF	-	-	-	-	-	-	-	-	-
F8381	Spectra Chip	58.0	NDF	-	-	-	-	-	-	-	-	-
F8382	White Chip	62.4	NDF	-	-	-	-	-	-	-	-	-
F8387	Black Chip	11.7	NDF	-	-	-	-	-	-	-	-	-
F8678	Starched Paperfold	66.5	PPR*	-	-	-	-	-	-	-	-	-
F8681	Cotton Cloth	68.8	PLX	-	-	-	-	-	-	-	-	-
F8682	Woolen Cloth	44.0	PLX	-	-	-	-	-	-	-	-	-
F8793	Green Slate	18.5	MON*	-	-	-	-	-	-	-	MON	-
F8812	Tinted Paper Terrazzo	41.7	-	-	-	PPR	-	-	-	-	-	-
F8813	Tonal Paper Terrazzo	6.6	-	-	-	PPR	-	-	-	-	-	-
F8826	Neutral Twill	58.8	PLX	-	-	-	-	-	-	-	-	-
F8827	Sarum Twill	35.1	MAT/ PLX	-	-	-	-	-	-	MAT	-	-
F8829	Graphite Twill	11.3	PLX	-	-	-	-	-	-	-	-	-
F8830	Elemental Concrete	38.5	AHD	-	-	-	-	-	-	-	-	-
F8832	Elemental Corten	13.8	AHD	-	-	-	-	-	-	-	-	-
F8833	Elemental Graphite	13.2	AHD	-	-	-	-	-	-	-	-	-
F8837	Brushed Zinc	37.0	MAT	-	-	-	-	-	-	-	-	-
F8859	Vintage Brush	25.0	MAT	-	-	-	MAT	MAT	MAT	-	-	-
F8917	Rolled Steel	10.1	MAT	-	-	-	-	-	-	-	-	-
F8918	Blackened Steel	8.8	MAT	-	-	-	-	-	-	-	-	-
F9271	Reclaimed Denim Fiber	7.7	PLX*	-	-	-	-	-	-	-	-	-
F9482	Marbled Cappuccino	12.8	-	AB	-	-	-	-	-	-	-	AB
F9483	Ferro Grafite	13.8	NDF	-	-	-	-	-	-	-	NDF	-
F9485	Nero Grafite	8.1	NDF	-	-	-	-	-	-	-	NDF	-
F9510	Layered Black Sand	7.9	ACO	-	-	-	-	-	-	-	-	-
F9511	Layered Sand	62.8	ACO	-	-	-	-	-	-	-	-	-
F9535	Flint Plaid	16.1	PLX	-	-	-	-	-	-	-	-	-
F9684	Natural Recycled Kraft	31.3	ESC*	-	-	-	-	-	-	-	-	-
F9685	Black Recycled Kraft	10.3	ESC*	-	-	-	-	-	-	-	-	-

\* Only available in HGP

# Product grades, finishes and accreditations.

This Collection incorporates the following grades of decorative laminate each with its own performance characteristics. **These grades conform to EN438.**



## Formica® Laminate

Sheets (thin) consisting of layers of wood-based fibers impregnated with thermosetting resins and a surface decor on one side

**Grade:** **HPL/EN438-3 HGP:** Horizontal, General Purpose, Postforming high pressure decorative laminate  
**HPL/EN438-3 HGS:** Horizontal, General Purpose, Standard high pressure decorative laminate  
**HPL/EN 438-8 ATP:** Pearlescent, Gloss, Light Duty, Postforming high pressure decorative laminate

**Thickness:** 0.7mm / 1.2mm Gloss (Frosted series), single sided

Additional flame retardant grades are available on request (please check for available options)

The RAW series of reclaimed decor papers use small-batch craft production; therefore, each sheet is unique and natural



## Formica® Compact

Sheets (thick) consisting of layers of wood-based fibers impregnated with thermosetting resins and surface decor on one or both sides

**Grade:** **HPL/EN438-4 CGS:** Compact, General Purpose, Standard high pressure decorative laminate  
**HPL/EN 438-8 ACS:** Pearlescent, Gloss, Light Duty, Compact, Standard high pressure decorative laminate

**Thickness:** Single sided 2, 2.5, 3 mm / Double sided 4, 6, 8, 10, 12, 13, 16, 18, 20 mm

Additional flame retardant grades are available on request (please check for available options)



## AR Plus® by Formica Group

Durable high gloss laminate, with increased surface performance, highly resistant to scuffs and mar abrasions

**Grade:** **PAR:** Abrasion-resistant, High-gloss, Postforming high pressure laminate

**Thickness:** 1.2 mm, single sided

Additional flame retardant grades are available on request (please check for available options)

*PAR grade classification does not appear in the EN438 grade classification system*



## AR Plus® Compact by Formica Group

Sheets consisting of layers of wood-based fibers impregnated with thermosetting resins and a high gloss surface finish on one or both sides

**Grade:** **PAR CGS:** Abrasion-resistant, High-gloss, Compact, General Purpose, Standard high pressure decorative laminate

**Thickness:** Single sided 2, 2.5, 3 mm / Double sided 4, 6, 8, 10, 12, 13, 16 mm

Additional flame retardant grades are available on request (please check for available options)

*PAR CGS grade classification does not appear in the EN438 grade classification system*

Product data sheets, including applicable fire rating, can be accessed on [formica.info](http://formica.info)

### Available surface finishes and recommended applications

Surface Finish Description	Surface Finish Designation	Code	Recommended applications	
			Horizontal (& Vertical), General purpose	Vertical and Light-duty horizontal
AR Plus®	AB	AB	•	
Arcosa	ACO	AC	•	
Essence	ESC	ES	•	
Gloss	GLS	90		•
Honed	AHD	77	•	
Matte 58	MAT	58	•	
Monolith	MON	ML	•	
Paper	PPR	PA	•	
Plex	PLX	PX	•	
Satin NDF	NDF	11	•	

● F3708 Burnished Coin



**NCS and RAL references**

Code	Decor	NCS®	RAL Classic
F1994	Fox	S 3500-N	7004
F2255	Polar White	S 0500-N	9016
F7837	Graphite	S 8000-N	7022, 8019
F7923	Surf	S 1502-Y	9002
F7927	Folkestone	S 2500-N	7035
F8793	Green Slate	S 6005-G20Y	7009

**General**

The information given in this brochure is correct at the time of publication. However, as we have a policy of constant product development and improvement, product specifications may change in the future. Visit [formica.com](http://formica.com), or [formica.info](http://formica.info) for technical data, as the most up-to-date source of information. Not all certifications stated are applicable or available for all Formica® products. Please check that the product you require is covered by a relevant certification or is suitable for your specific application, in advance of order placement.

**Colour system notations**

NCS® and RAL Classic notations represent the closest match available in the particular system.

They may or may not be exact and are provided for guidance only. NCS and RAL Classic notations provided have been established from a standard matt laminate sample. Please note that different surface finishes (texture structure and gloss levels) can have an effect on colour perception. When exact colour information is required, or for cross-material matching (HPL to other materials), please always refer to an actual laminate sample in the specified finish.

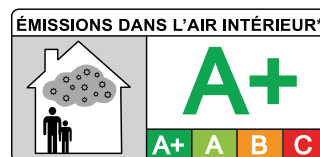
**Light Reflectance Value**

Light Reflectance Value (LRV) is a value indicating the proportion of light reflected by a colour, when measured under standard daylight conditions. This guidance uses a scale of 0-100, where 0 = black and therefore total light absorption, whereas

white = 100 and therefore total light reflection. The main purpose of this value is to indicate measured colour contrast between two surfaces, which need to be readily distinguishable within an environment (under static conditions, a difference of 30 units between two colours is considered adequate). LRVs stated may or may not be exact and are provided for guidance only.

**Please note**

For non-solid colour decors, where there are multiple colours across the design, the stated LRV is an average value taken from multiple measurements across the decor and must be used with caution. The individual colours in a pattern, woodgrain or stone design can differ more than 30 LRV units within the design itself.



## Disclaimer General

The information provided by Formica Group ("Formica") in this document is solely indicative. The information given in this brochure is correct at the time of publication. However, as we have a policy of constant product development and improvement, product specifications may change in the future. Visit [formica.com](http://formica.com), or [formica.info](http://formica.info) for technical data, as the most up-to-date source of information. Formica does not warrant that the information in this document is suitable for your specific purpose. Colour system notations represent the closest match available in the particular system. They may or may not be exact and are provided for guidance only. When exact colour information is required, please always refer to an actual laminate sample in the specified finish.

## Liability

Formica is not liable (neither contractual nor non-contractual) for any damage arising from or related to the use of this document, except if and to the extent that such damage is the result of willful misconduct or gross negligence on the part of Formica and/or its management. The limitation of liability applies to all parties affiliated with Formica, including but not limited to its officers, directors, employees, affiliated enterprises, suppliers, distributors, agents and representatives.

## General Conditions

All sales of Formica® brand products are governed by the Formica General Terms and Conditions of Sale in effect at the time of sale and contained in every order acknowledgement and are available upon request.

## Intellectual Property

All intellectual property rights and other rights regarding the content of this document (including logos, marks, text and photographs) are owned by Formica Group and/or its licensors.

Formica, the Formica Anvil Device and AR Plus are registered trademarks of The Diller Corporation.  
© 2024 The Diller Corporation

