

DecoMetal[®] Design Rationale

Presented By
FORMICA ASIA DESIGN



Metals are one of the favorite materials in commercial scenarios – used in fashion, accessories, table wares, splash backs, furnitures, interiors as surface material or accent. Designers pair metallics with contrasting materials such as glass, plastics and wood, creating intriguing contrasts, and play with shapes that will reflect light across rooms or highlight textural contrasts.





Applications

Retail, Hospitality, Entertainment, Office, Healthcare, Education, etc.

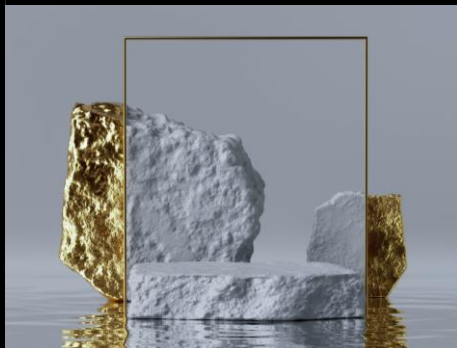
Features & Benefits

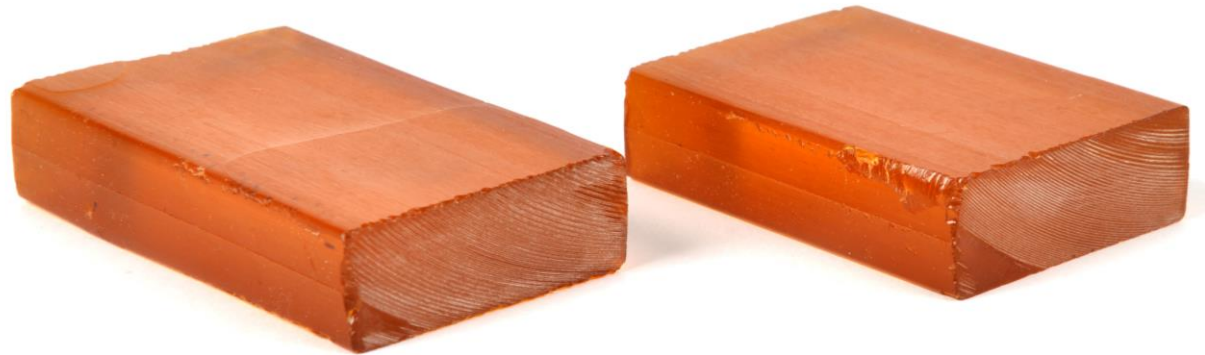
- Real metal foil laminate
- Upscale look and feel
- Durable vertical surface
- Ideal for feature walls, fixtures, furniture, signage, displays
- FSC certified, Fire rated, GREENGUARD, GREENGUARD Gold

LUNAR AGED

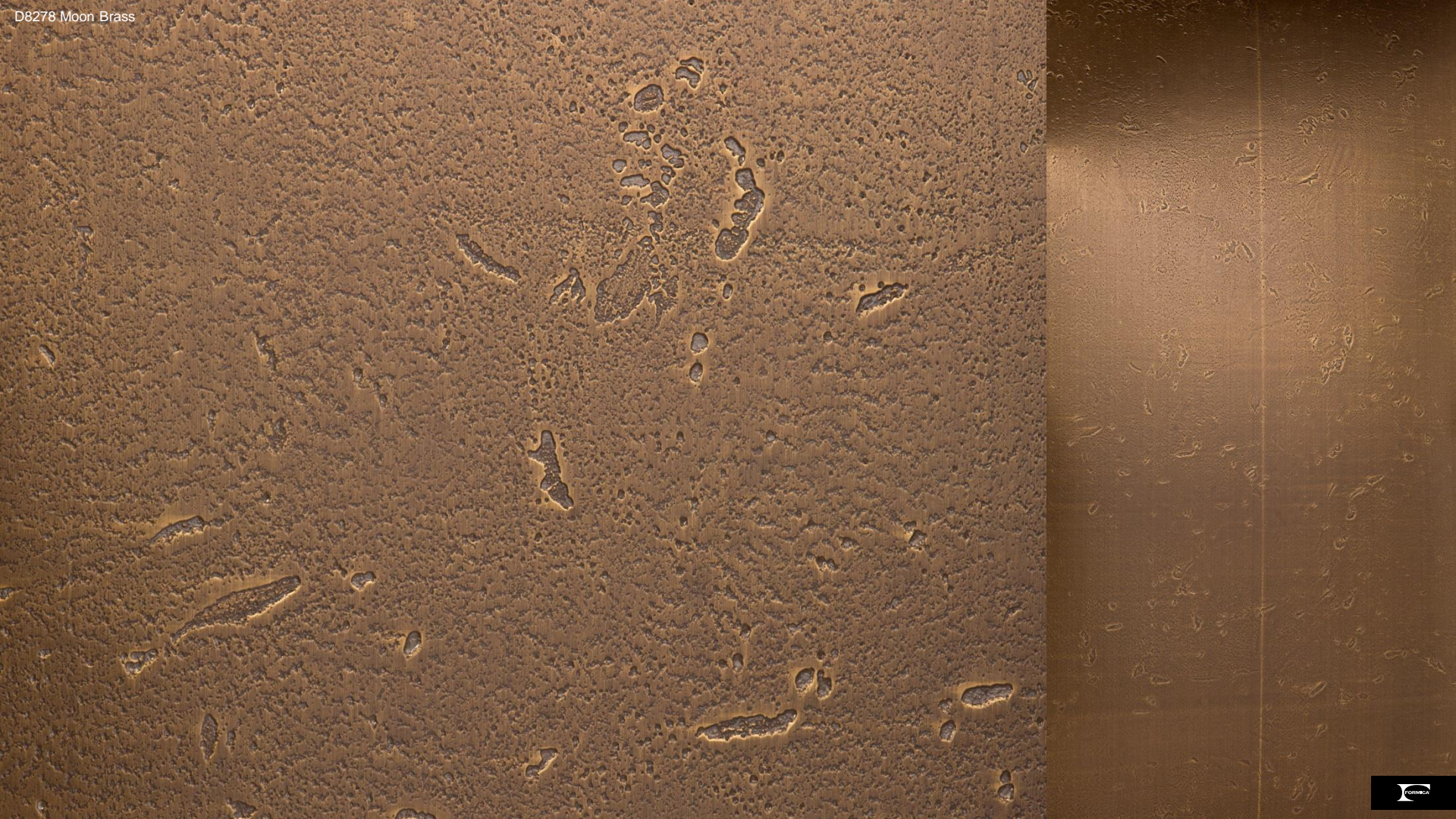
man-made + geological

A pop trend that creates a space-inspired aesthetic with distressed lunar finishes and raw organic materials that look like they could have come straight from the moon. The imagination and yearning for the mystery space remains an important design driver, designers create their artwork inspired by meteorite, explore the aesthetics of man-made vs geological.

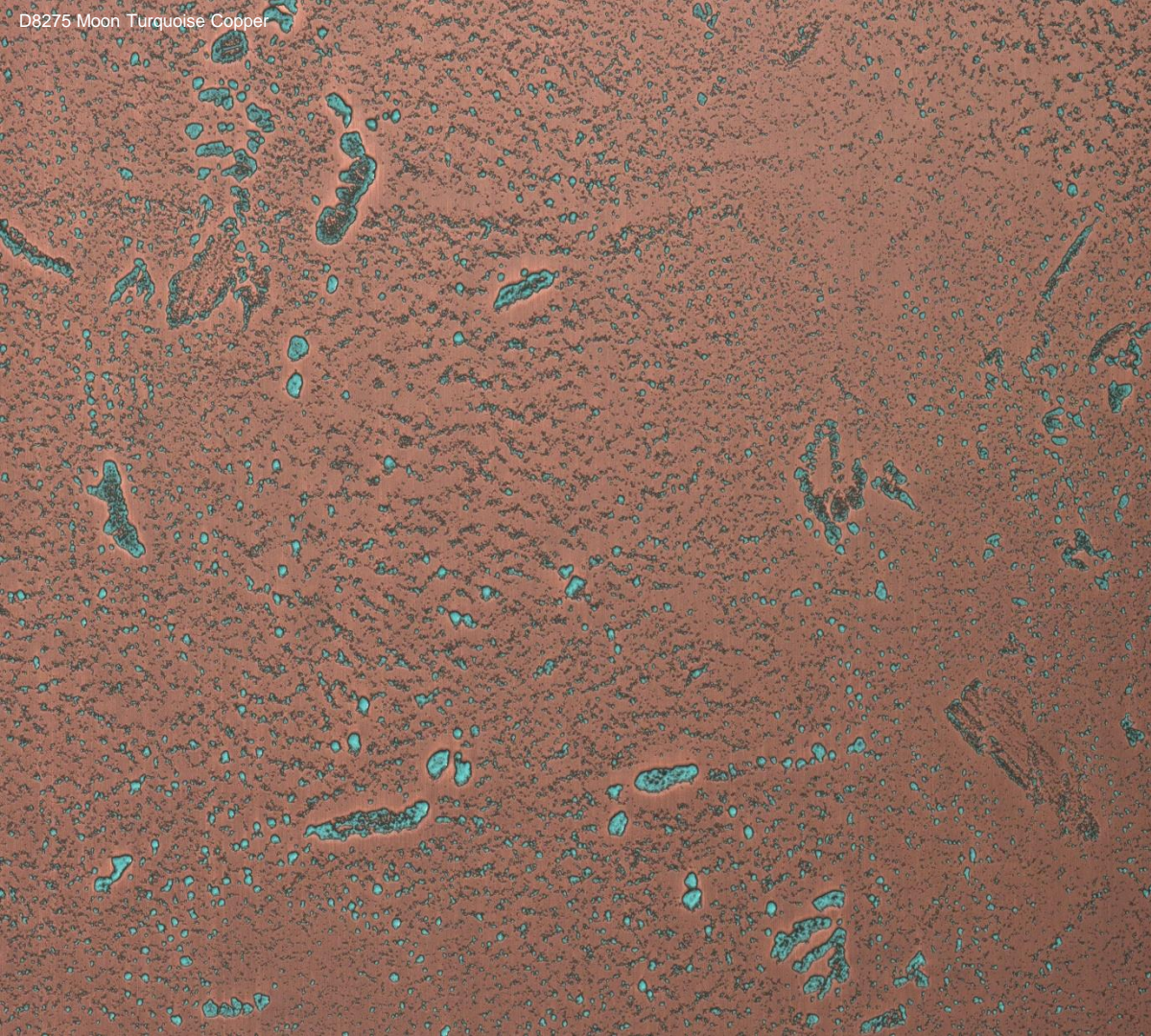




Rust resin furniture and naturally patinated interior walls experiment with dulled finishes and irregular patterns to give subtle tactility to plain facades, smoother and more usable. Urban pollution and oxidized metal effects are used for reference to create beautiful tactile surfaces, with naturally weathered, organic, oxidized tones.



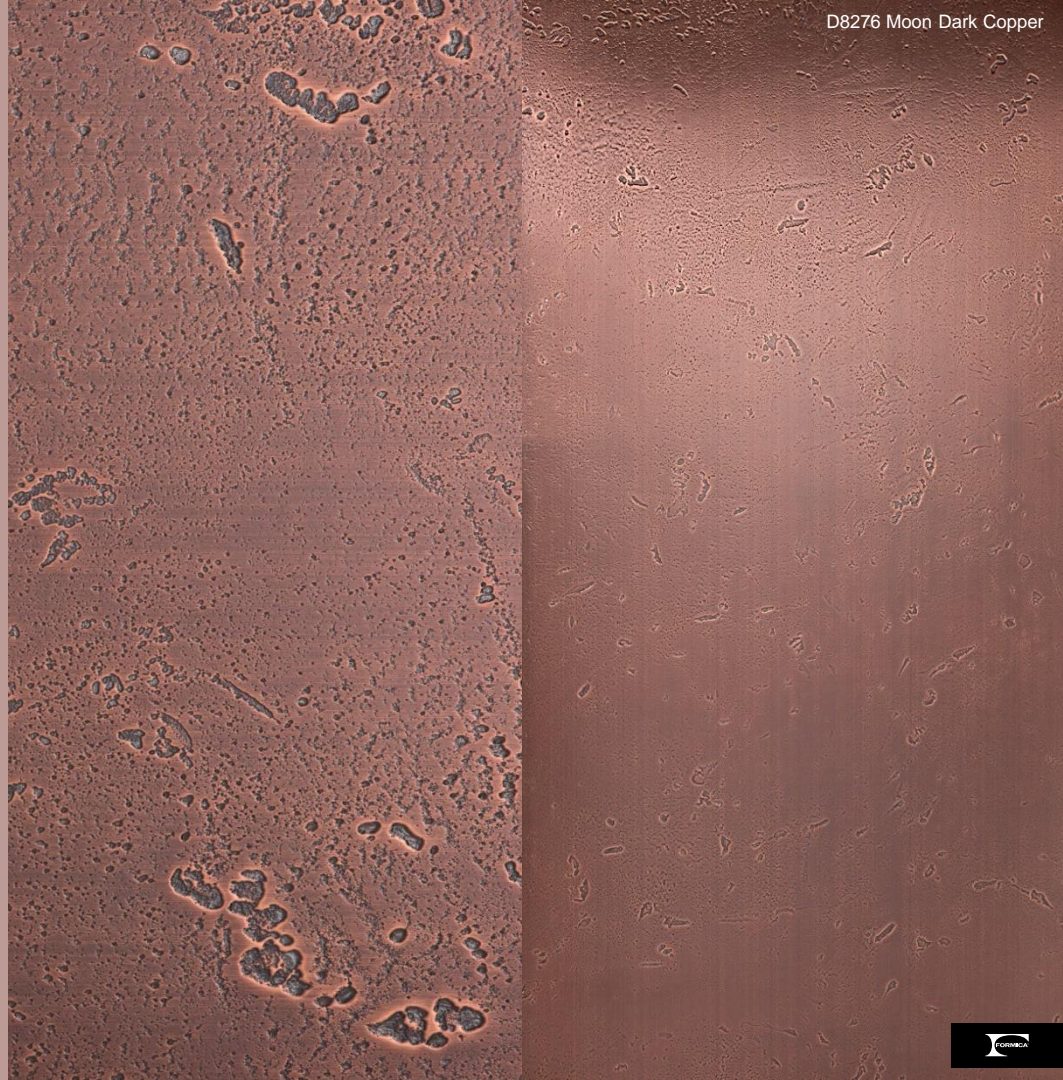




A familiar but special feature playing with copper and bright green blue, an effect achieved by using chemical processing and oxidization.



The „used look“ that is reflected in this decor creates a tension that is imbued with living impulses when used in interior design.





CRUMPLED VEINED

well-worn + metal foil



Metallics are key for an industrial direction, especially with a strong focus on finishes. Well-worn, crumpled and veined chic, a classic fashion design element is applied on modern interior decorations. We play this feature with duo-tone or monocolour, for a chic and usable crumpled metal foil look as nice flavored into interiors.

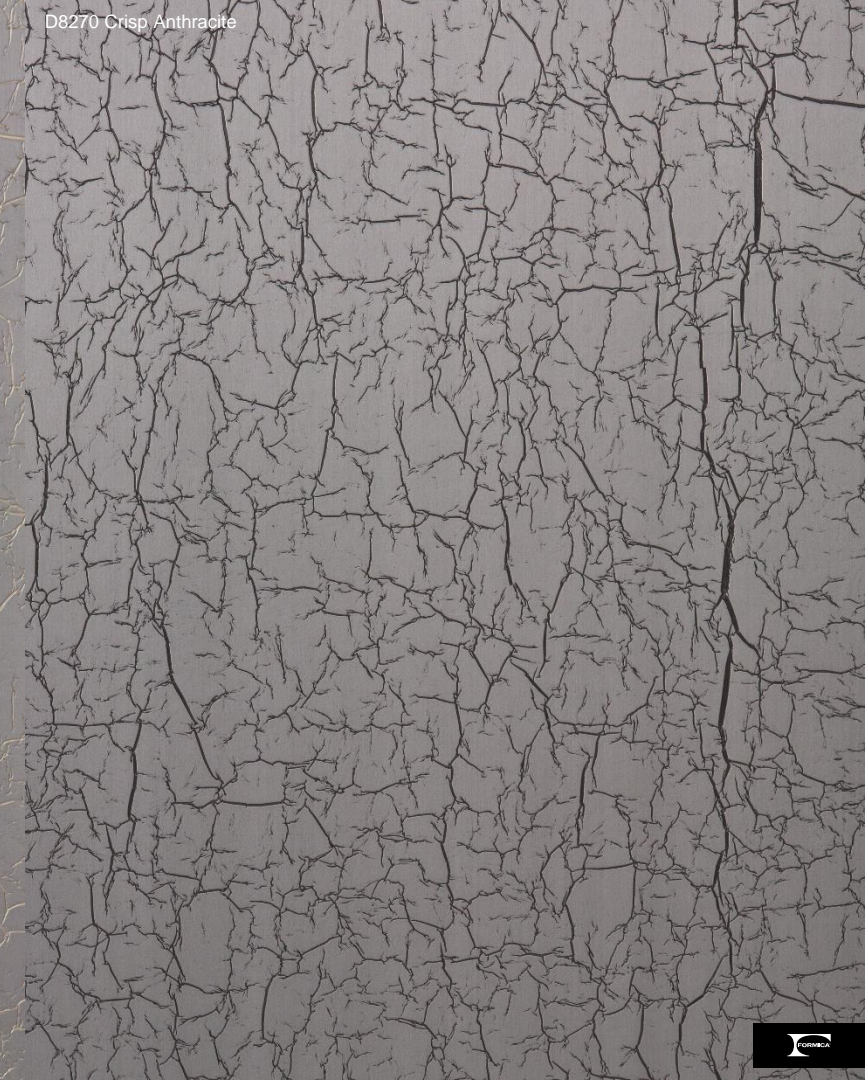
D8274 Crisp Antique Copper

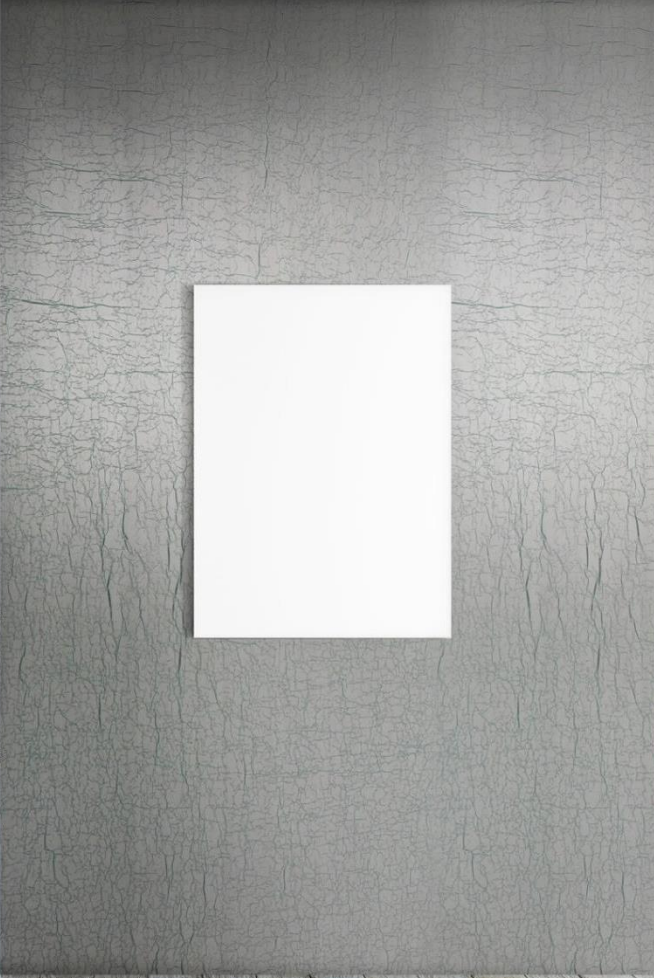


D8269 Crisp Gold



D8270 Crisp Anthracite







COPPER ART

artistic hand + multicolor



As wall decoration, metallic wall art offers a new way of bringing an artistic sensibility to walls, modernizing a look popular in the 1960s.

Metallic surfaces are given a multicolor appearance, with dyeing, rusting or chemical-brushing treatments used to create vivid contrasts, and the pigmented metal surfaces reinterpret industrial material with a painterly artistic hand. And also more complex nature-inspired designs of leaves and feathers add statement ornamentation.



D4691 Copper Stratos Diagonal



DH091 Copper Brass Antique

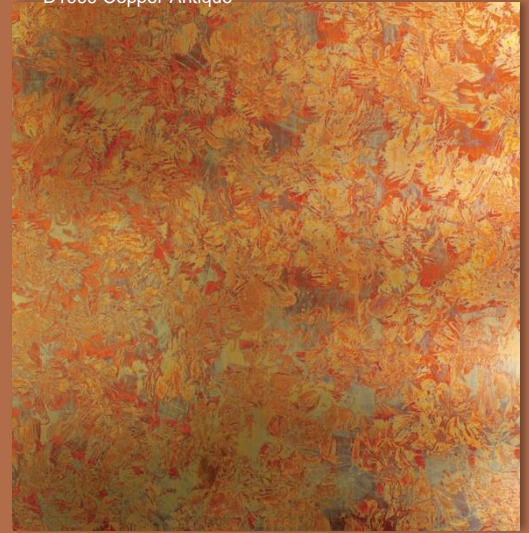


Metal appear rusted, dyed contrasting tones from deep reds to burnt coppers, to create striking art.Meteor shower & Liquid sparkle.





D1999 Copper Antique



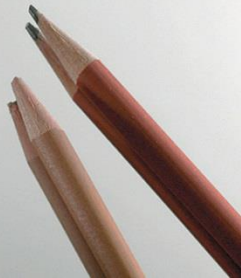
CRAFTSMANSHIP BY HOMAPAL®

POLISHED

high-shine

Metallic surfaces are becoming increasingly diverse, from the extremes of dry, rusted steels through to glossy high-shine and mirror finishes. High-shine metallics add a lustrous shine to interiors in gold, silver and colored finishes, still have a strong presence across interiors. Gold is pared-back and cooled down to bring a subtle, luxurious element to interiors. High-shine metallic remain a show-stopper, especially in golden hues, thanks to their commercial appeal, innate glint and easy association with luxury. The gleaming, mirrored sheen meets minimalist shapes, adding a refined sophistication to ordinary items.













BRUSHED

a refined sheen



Adding a hint of texture, brushed surfaces are applied across a range of interior categories, from lighting to wall coverings. Smooth and brushed metallic surfaces infuse products with a refined sheen, bringing the delicate minimalism to interiors, ranging from sleek and luxurious decoration, to industrial and contemporary statements. Copper, bronze, silver and colored metals are gently brushed and hammered to create a luxe aesthetic, dark metallics create an architectural and modern industrial look with adding tactility to the surfaces.



12 NICARAGUA ROBUSTO
TUBOS

D2052 Brushed Copper Aluminium

Copper continues to be a key material for interior, adding a contrasting sheen to grey-toned and dark interior spaces, as well as surfaces such as wood and marble. Brushed copper is rising as a more toned-down finish to an otherwise bright and statement material, creating a subtle effect for designs, whether sleek and minimalist or worn and industrial.

D2052 Brushed Copper Aluminium



D2126 Bronze Brushed
Aluminium

D5312 Brushed Umbra

Pictures for Inspiration only

Brushed bronze accents
add a warming glow to
products, reflecting light
across interior spaces.



D2178 Brushed Stainless Steel



Semi-sheen silvers add a cool, minimalist texture.



CHRISTINE KRÖNCKE INTERIOR DESIGN



Darker brushed metallic accents appear on materials such as iron, stainless steel and zinc, adding a cool, oiled sheen. Deeper metallics are paired with glass and dark plastics to create interesting juxtapositions of finish and texture, a fresh look to interior spaces.

PLEX

textile feature + radiance of natural metals



Exclusive to Formica Group, the new texture illuminates the beauty and radiance of natural metals, giving a touch of luxury, glamour and authenticity to vertical surfaces. Created as a texture on top of real metal foils, Plex is a small scale, versatile finish that impresses with its textile feel, crisp touch and rather low gloss sheen. The inspirations behind the new finish were crisp satin and silk weaves with their subtle reflective quality and pleasant dry touch. Formica Group also worked to the trend from traditional cool to new warm tones. This gives users the freedom to mix and match with established looks in the range. Plex is available on gold, bronze, argent, umbra and graphite DecoMetal laminates. The result - a highly desirable and tactile laminate surface which exudes quality and helps achieve a fresh, timeless look.



D5310 Plex Graphite

D5307 Plex Umbra

D6486 Plex Bronzestone

D5309 Plex Gold

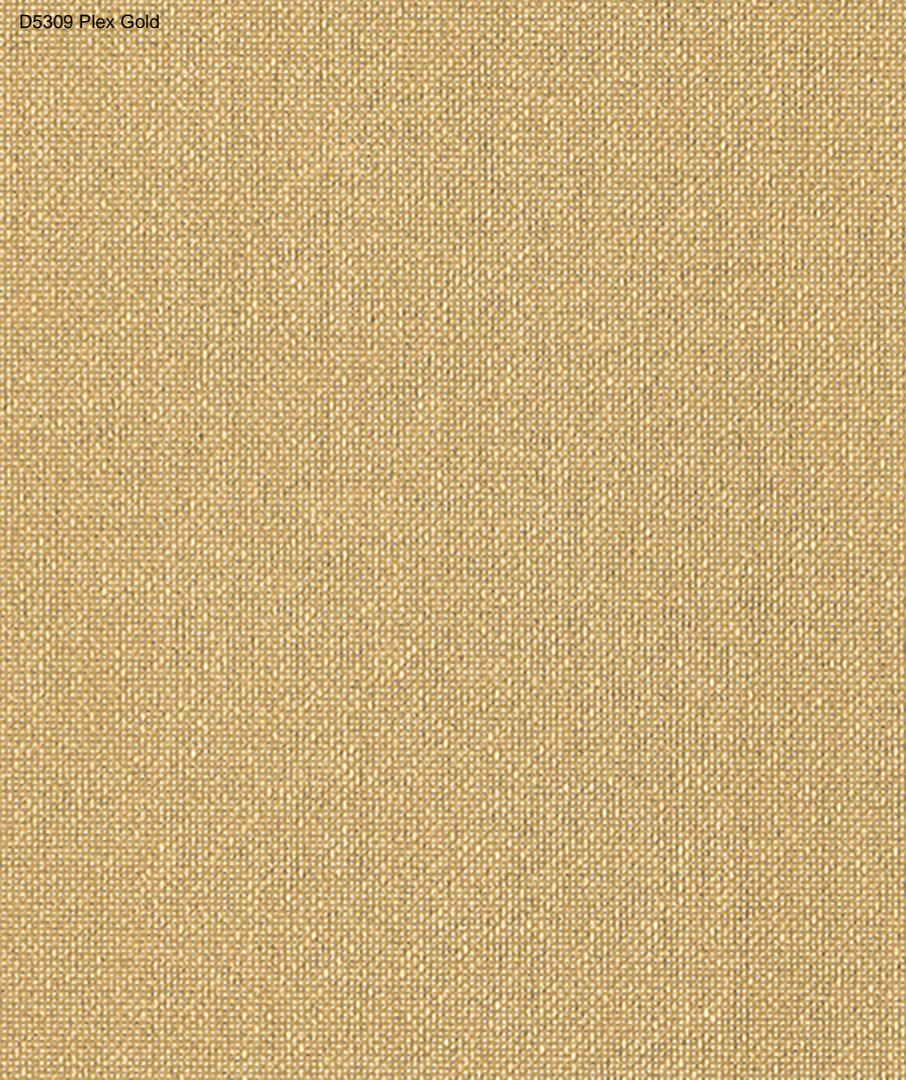
D5306 Plex Argent

Award Winning
Design in a Usable
and Enduring Pattern.



reddot design award







DIAMOND

geometry in triangles + diamond shaped layouts

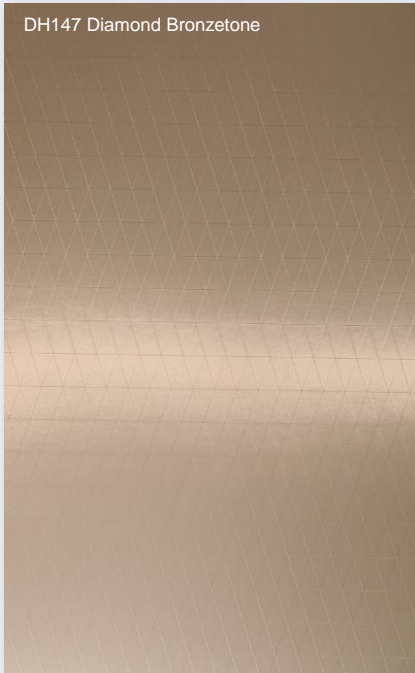


A geometric faceted pattern makes the metals more directional. Small-scale geometric patterns replicate the intricacy of 3D folds which subtle shifts in color to replicate a sense of shadow and light. Geometrics are inspired by the past and future: the geometrics reference retro patterns, as the 1970s continues to influence design, but are also fused with contemporary elements for a style that is both timeless and modern, mimic 3D surfaces.

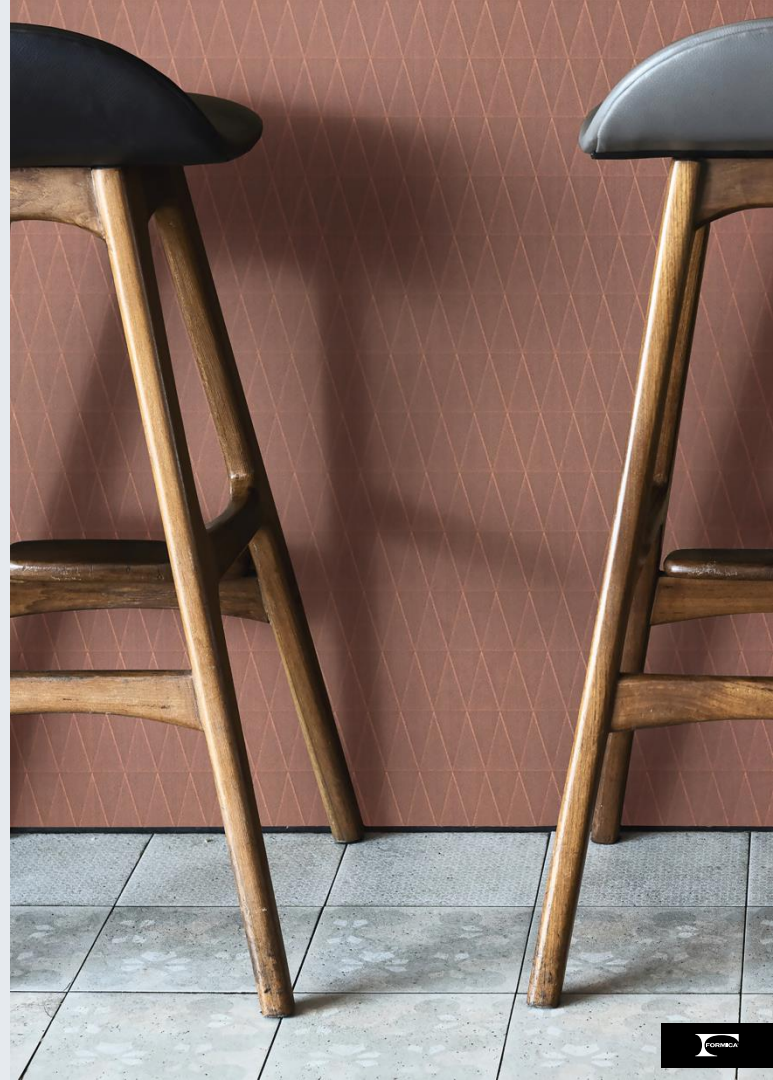
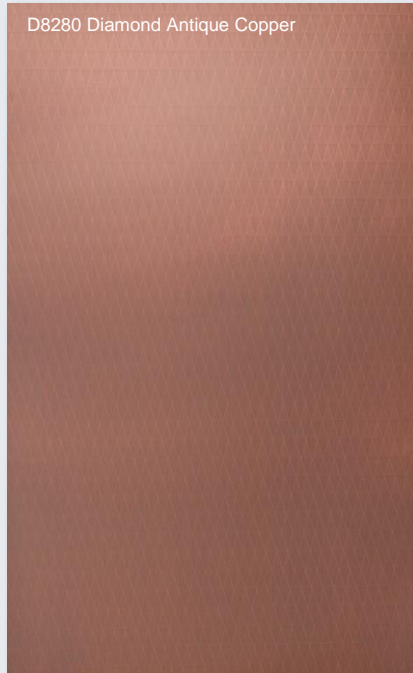


Dulled metals provide a subtle finish for walls, surfaces, in matte shades of copper, bronze and brass. Metal surfaces are taken back to their most basic states, with dry, rusted finishes applied across furniture and surfaces.

DH147 Diamond Bronzestone



D8280 Diamond Antique Copper



Metallic surfaces are given a two-color appearance with the diamond geometric texture to create vivid contrasts.

D8279 Diamond Antique Brass

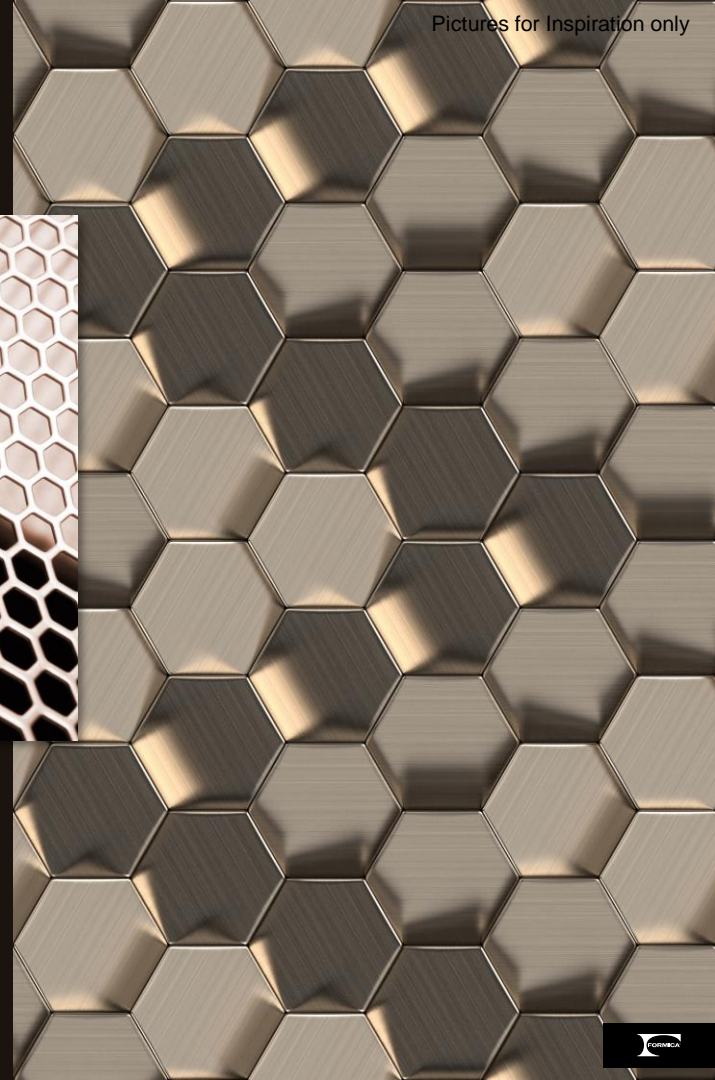
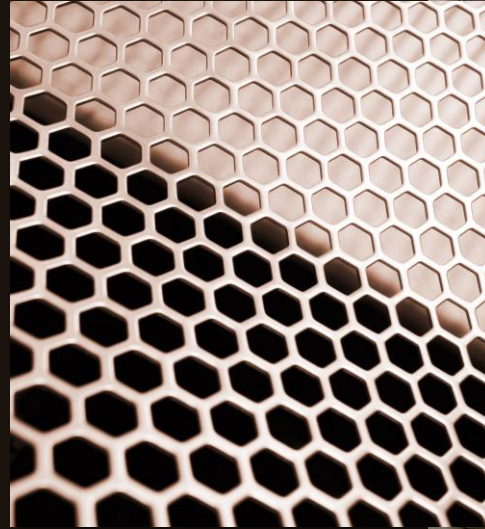


DIMPLED

artisanal techniques + modern hexagon design

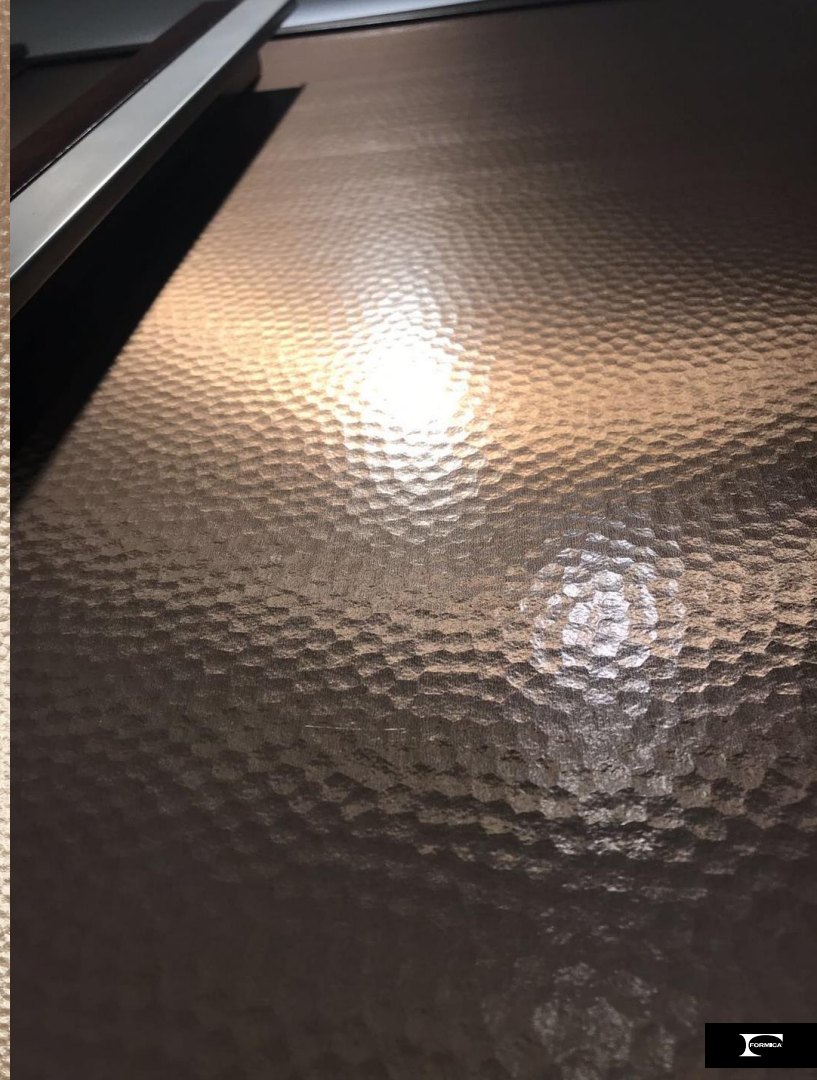
An inspiration of artisanal techniques recalls a memory of old time. A time-old technique, hammering has seen a renaissance in recent seasons, elevating the hand-applied, textural finish to a contemporary appeal and application. Crushed surfaces and deeper grooves lead a more worn, distressed style.





A combination of natural hexagon design with semi lustrous gold, bronze finishes which provides a modern, unpretentious and durable look.

D2807 Dimpled Bronzestone





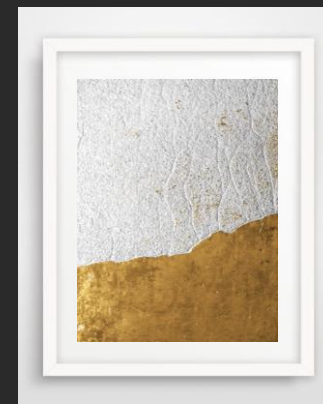
LOUNGE

handmade fibre + metallic leather

Revolutionizing fashion and interiors fabrics, brands increasing include metallic in their collections with a handmade or artistic design. Molten metallic tones achieved through all-over embellishment and coated leathers dominate for an opulent, premium feel.



D2806 Lounge Steeltone



The supple nature of leather, means it lends itself to being draped, adding tactility to angular shapes. The result – handmade metallic leather with random draped fiber decoration.



D2806 Lounge Steeltone



D2805 Lounge Bronzestone



CRAFT

organic carved + modern textured metal

Craft adds dimension to complex solid colors by adding a deep and larger scale texture behind Plex's overall low sheen finish. Organic in feel, and reminiscent of techniques used on wood, Craft combines the organic feel of carved wood, with the high tech look of modern metal in new trend forward colors. Highly textured surface works add an unrefined and tactile side to objects, exploring new textures with hammered, corrugated and debossed interventions. These works add a timeworn, antique-look and lived-in touch to metallic designs, enlivening surfaces with beautiful imperfection that warms up the interiors. DecoMetal® offers a warmer Argent Craft, Umbra Craft, and Bronzeted Craft with a Plex texture evokes the natural world and hand-made design, harmoniously and can be combined for maximum interior design usability.



D6484 Craft Argent

D6483 Craft Bronzestone

D6485 Craft Umbra

**interzum
award** interzum award:
intelligent
material & design
2011

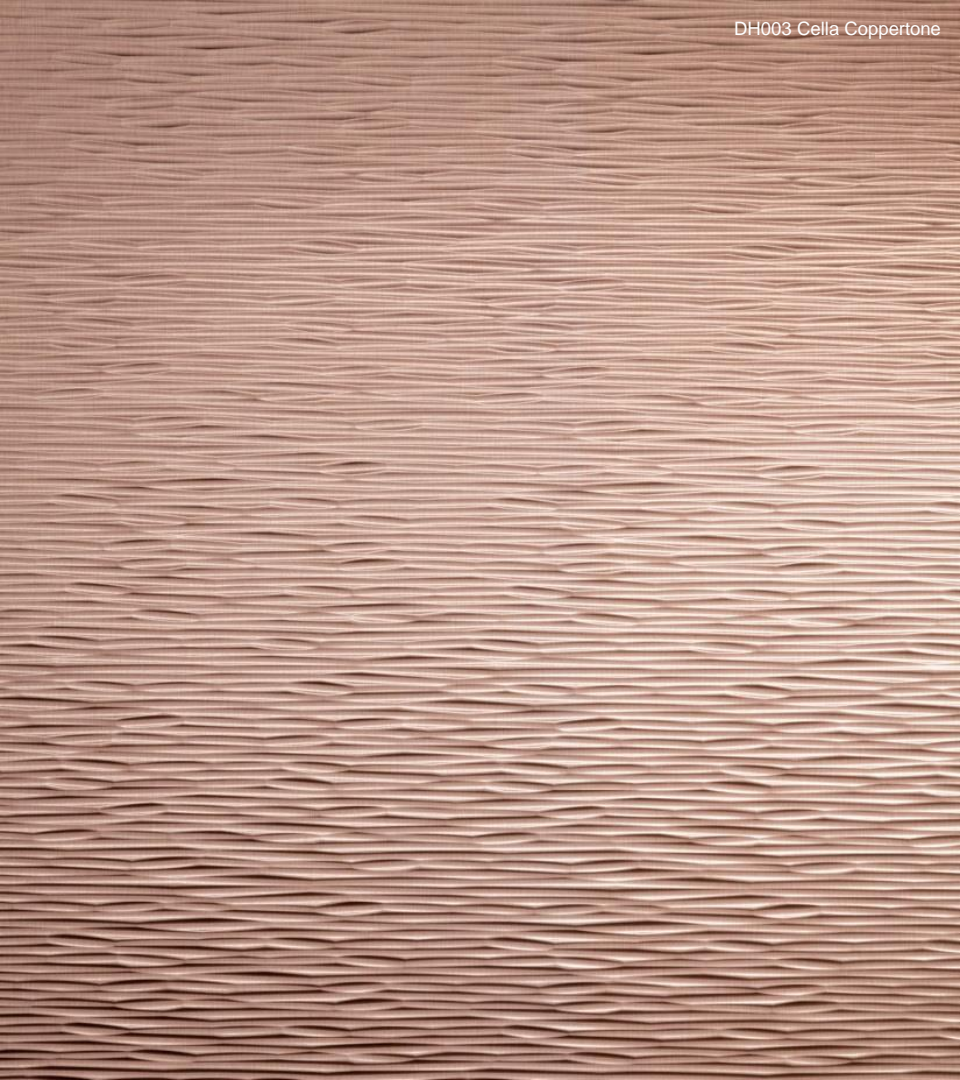






DH003 Cella Coppertone

DH004 Cella Black

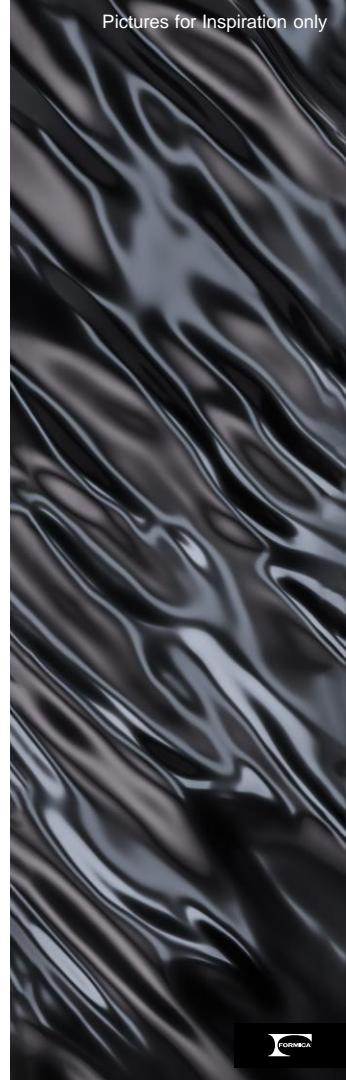


LAVA

fluidity + mirror shine



A favor of Nature, dripping, molten metal effects are emerging as a new material direction. Reflective surfaces are uneven, giving the appearance of liquid. Metallic surfaces bring a sense of fluidity to decor, with mirror shine and liquid movements creating intrigue. Poured or molten effects – either in real metal or mimicked in glass, ceramic and other materials – give the surface a subtly wavy and irregular finish, evoking rippling waters. The use of reflective lacquers and hyper-polished materials adds a surprising lightness and sensorial appeal to surfaces.





Mass-produced or luxurious metallic materials, environments and forms, originating from influential architects and artists explore both hard and liquid forms with highly polished undulating surface waves. Which have a crucial influence on the world of fashion and textiles design, e.g. silver metallized organza and fluid silks in dazzling tones of silver. Reflecting & gleaming surfaces create a new approach to conspicuous luxury. High-shine metallics add a lustrous shine to interiors in gold and silver.

D5471 Lava Goldtone

Pictures for Inspiration only*



Material ConneXion
Certificates of
Excellence







MESH

fabrics crinkle + metallic tactility

There is always an ornate, opulent side to textiles, seen in golden embroidery, woven or gilded patterns, and historical embossed surface motifs. Why we don't do it in the other way around?

Mesh serie brings tactility center-stage, adding an ornamental and visual interest to decor. Adding fabrics feature, crinkle and crumple which softens metal look in a tactual way, unexpected, surprised, with metallic glint for a more luxe touch, delicate and sophisticated.



D2035 Aluminium Mesh

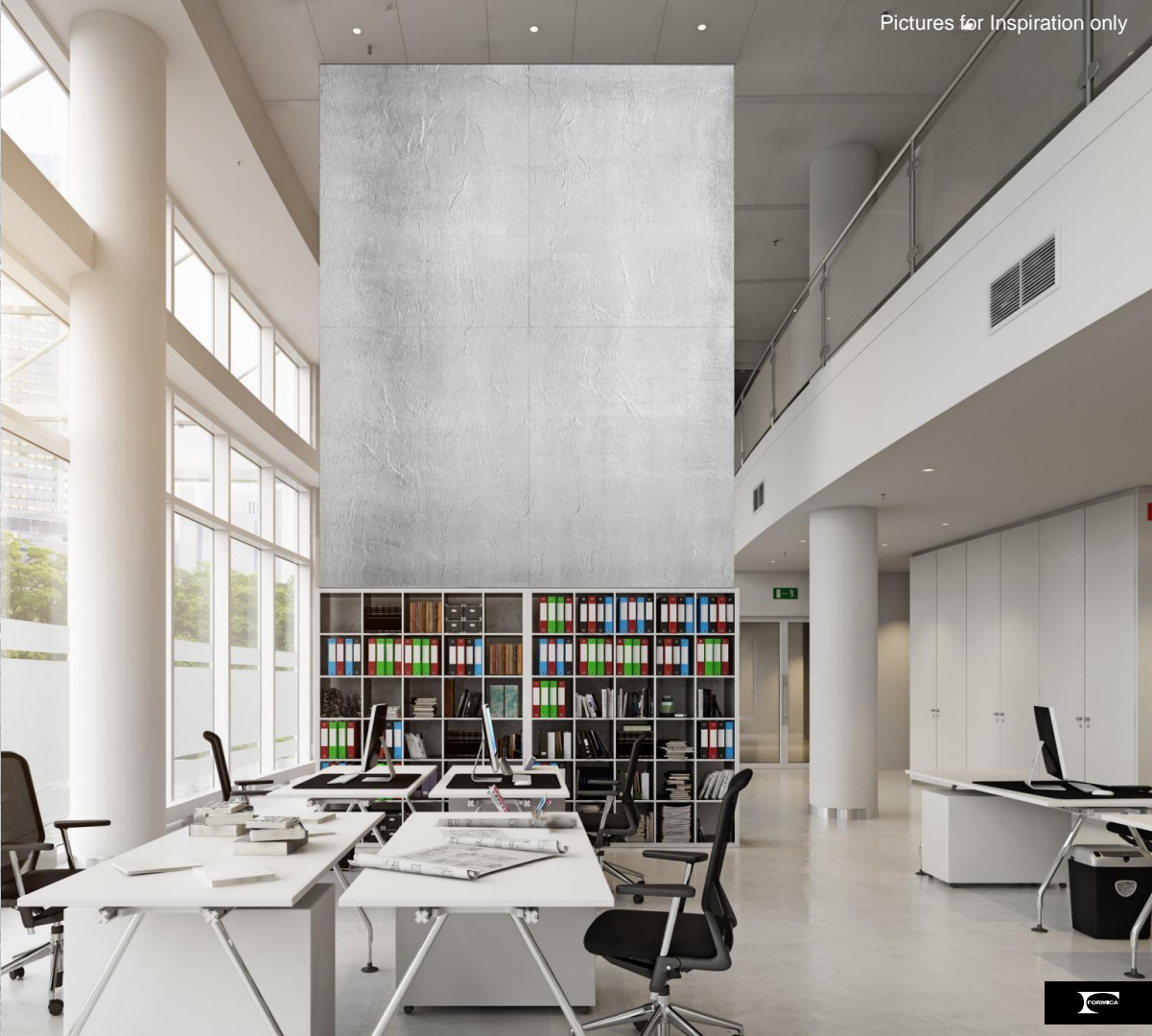


D4899 Bronze Mes



Pictures for Inspiration only









ANTIQUED

hammer & korten



Corrugated sheet metal is the archetypal urban material: humble, anonymous and unpretentious, strong and durable. Weathered, tarnished and rusted surfaces give the impression of aged and worn materials with a story to tell.



Often slightly coarse or abrasive, these surfaces have a dense coppery hue. Dark staining, oxidation and oil rubbing are worked into the surface, referencing the look and feel of cast iron.



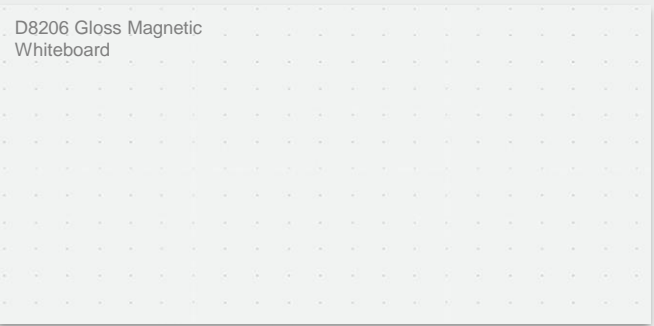


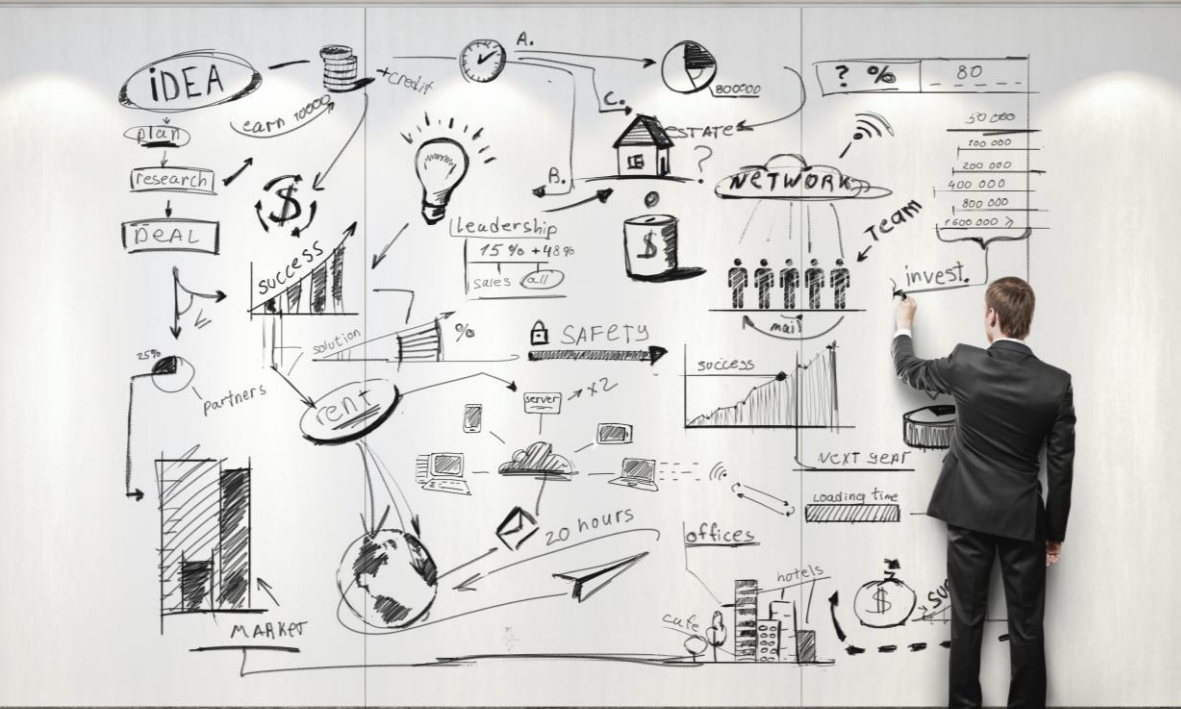
MAGNETIC

whiteboard & chalkboard



Magnetic Boards – the perfect symbiosis of functionality and design. A high degree of holding power combined with the fact that the surfaces, available in a wide range of colors, can be written on opens a whole world of diverse applications. Some of the décors are also available with a reduced light reflection effect for projection purposes. The possible applications are virtually unlimited and range from shop fitting to shop window designs, displays and information boards to children's and kitchen furniture, in fact anywhere where things have to be flexibly fixed and removed again. Due to special technology that is embedded in the laminate we are achieving a very high magnetic effect. As such, large-format documents, e.g. plans, posters and other objects can be easily fixed in place with magnets and then removed again without leaving a trace.











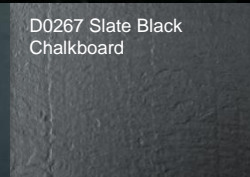


It is the texture of a genuine piece of slate from the Harz Mountains, Germany – authenticity in laminate.

D8205 Black Magnetic Chalkboard



D0267 Slate Black Chalkboard



D8211 Green Magnetic Chalkboard



D8234 Macchiato Magnetic Chalkboard











$z^n = |z|^n (\cos n\varphi + i \sin n\varphi)$
 $P(A) = \sum_{\omega \in A} p(\omega)$
 $z = a + bi$
 $y = \cos x$
 $z^n = |z|^n (\cos n\varphi + i \sin n\varphi)$
 $P(A) = \sum_{\omega \in A} p(\omega)$
 $z = a + bi$
 $y = \cos x$

1. $A \cap B'$ $\omega \in A$
 2. $A \cap B$
 3. $A' \cap B$
 4. $A' \cap B'$

$S_n = a_1 \frac{q^n - 1}{q - 1}$
 $e = 2,718281828$
 $x_{1,2} = \frac{-b \pm \sqrt{D}}{2a}$
 $y = ax^2 + bx + c$

A \ B	1	2	3
1	1	1	1
2	1	0	0
3	0	0	1
4	0	0	0

$\int f(\varphi(x)) \varphi'(x) dx = \int f(u) du$
 $\lim_{n \rightarrow \infty} a_n = a$
 $P(A|B) = \frac{P(A \cap B)}{P(B)}$
 $P(A \cap B) = P(A) \cdot P(B)$
 $\lim_{n \rightarrow \infty} \frac{a_n}{b_n} = \lim_{n \rightarrow \infty} \frac{a}{b}$
 $\lim_{n \rightarrow \infty} \log_a \sqrt[n]{r} = \frac{1}{5} \log_a r$

$z^n = |z|^n (\cos n\varphi + i \sin n\varphi)$
 $P(A) = \sum_{\omega \in A} p(\omega)$
 $z = a + bi$
 $y = \cos x$
 $z^n = |z|^n (\cos n\varphi + i \sin n\varphi)$
 $P(A) = \sum_{\omega \in A} p(\omega)$
 $z = a + bi$
 $y = \cos x$

1. $A \cap B'$ $\omega \in A$
 2. $A \cap B$
 3. $A' \cap B$
 4. $A' \cap B'$

$S_n = a_1 \frac{q^n - 1}{q - 1}$
 $e = 2,718281828$
 $x_{1,2} = \frac{-b \pm \sqrt{D}}{2a}$
 $y = ax^2 + bx + c$

A \ B	1	2	3
1	1	1	1
2	1	0	0
3	0	0	1
4	0	0	0

$\int f(\varphi(x)) \varphi'(x) dx = \int f(u) du$
 $\lim_{n \rightarrow \infty} a_n = a$
 $P(A|B) = \frac{P(A \cap B)}{P(B)}$
 $P(A \cap B) = P(A) \cdot P(B)$
 $\lim_{n \rightarrow \infty} \frac{a_n}{b_n} = \lim_{n \rightarrow \infty} \frac{a}{b}$
 $\lim_{n \rightarrow \infty} \log_a \sqrt[n]{r} = \frac{1}{5} \log_a r$





The End

Thank You.