



# ENCHANTING LIVING SPACES WITH CHARM.

Let's stay in touch!

[Stock Enquiries](#) | [Product Information](#) | [Samples](#)

Contact Us



## Formica® Laminate PROTEC+ are antimicrobial laminates.

PROTEC+ antimicrobial technology is not available for Metallic Woods, Metallic Stones, Pearlescent and DecoMetal®.

### Legend

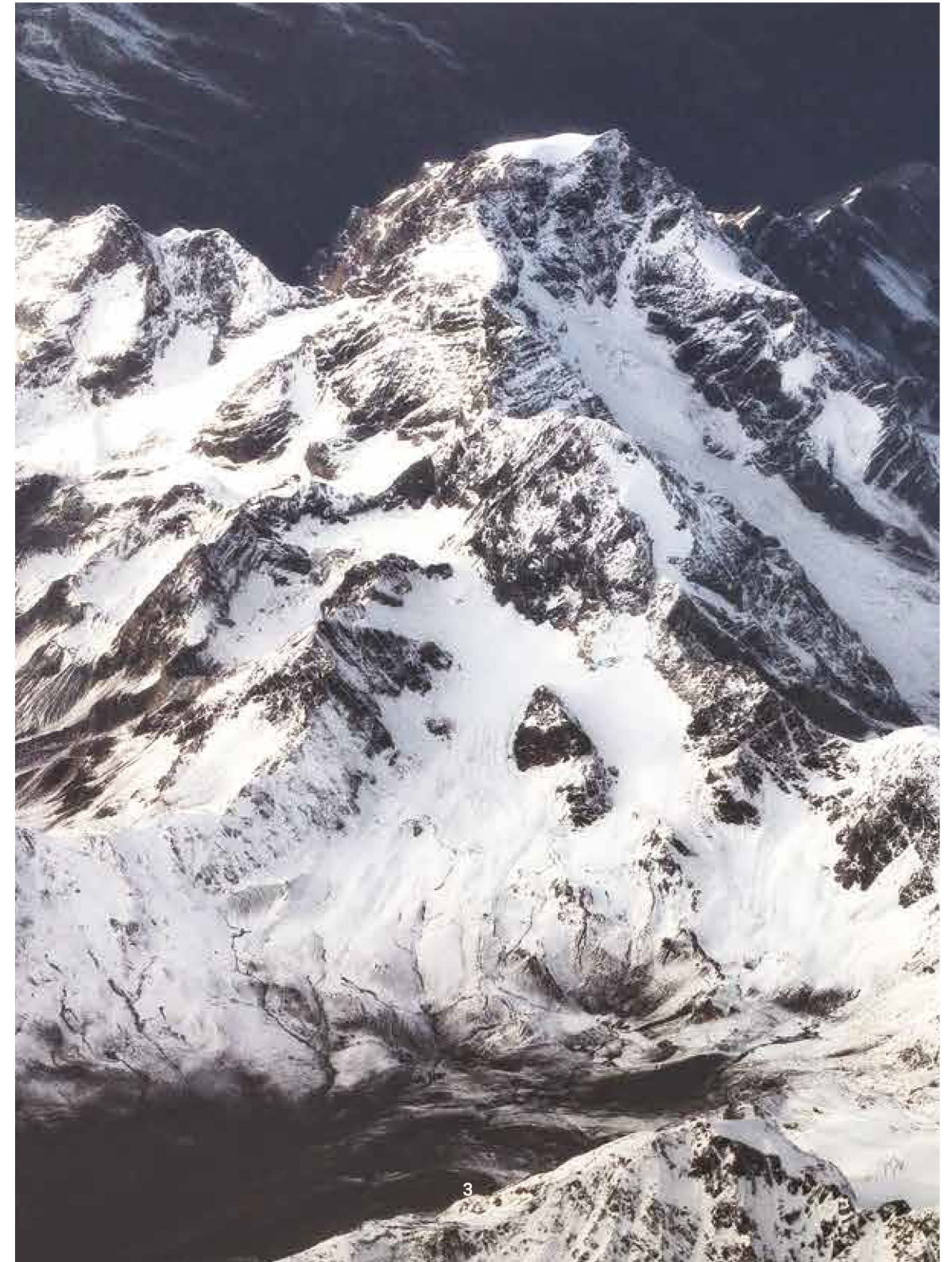
As you explore the pages, use this legend to interpret the symbols

- core** Design with white matched core colour
- EXCLUSIVE** Exclusive in Formica CORA™ only
- 4'x10'** 4' x 10' size available
- core** Design with light grey matched core colour
- NEW** New design
- V** Vertical application only, not recommended for horizontal application
- core** Design with yellow brown matched core colour

Like  
a magical spell,  
Formica transform living  
spaces into inner landscapes.  
Formica isn't just about  
design - it's about changing  
the mood and feel of your  
living spaces by bringing  
the essence of nature indoors.  
These surfaces are more than  
just a visual experience,  
they create a living landscape  
that lets you connect with  
nature on a deeper level. It's  
an emotional connection that  
resonates with your soul.

THE RICHNESS OF  
EARTH'S NATURAL  
TEXTURES MAKE  
LIVING SPACES  
COME ALIVE.

Earth's beauty lies in textures. The deeply etched grooves of limestone caves, the swell of mountains rising above the land, snowflakes clinging to tree branches in the winter light. These intricate patterns form magnificent canvases for the home. They bring depth and layers, harmony, and dimension.



1  
5965OG  
Rovere Planked Carbon



2

The calming elegance of wood and cement capture the warmth of the sun amongst the tranquil woods.

2  
5970OG  
Olmo Downpour Carbon

In expansive, shared spaces, smooth textures impart a joyful intimacy and the luxury of easy cleaning.



1  
5978OG  
Accacia Ash

2  
0464  
Graystone

3  
0991KL  
Off White Stone

In a room full of soft curves and natural light, the polished texture of marble and muted shades of wood provide an understated grandness.



1 5969OG  
Olmo Downpour Elm

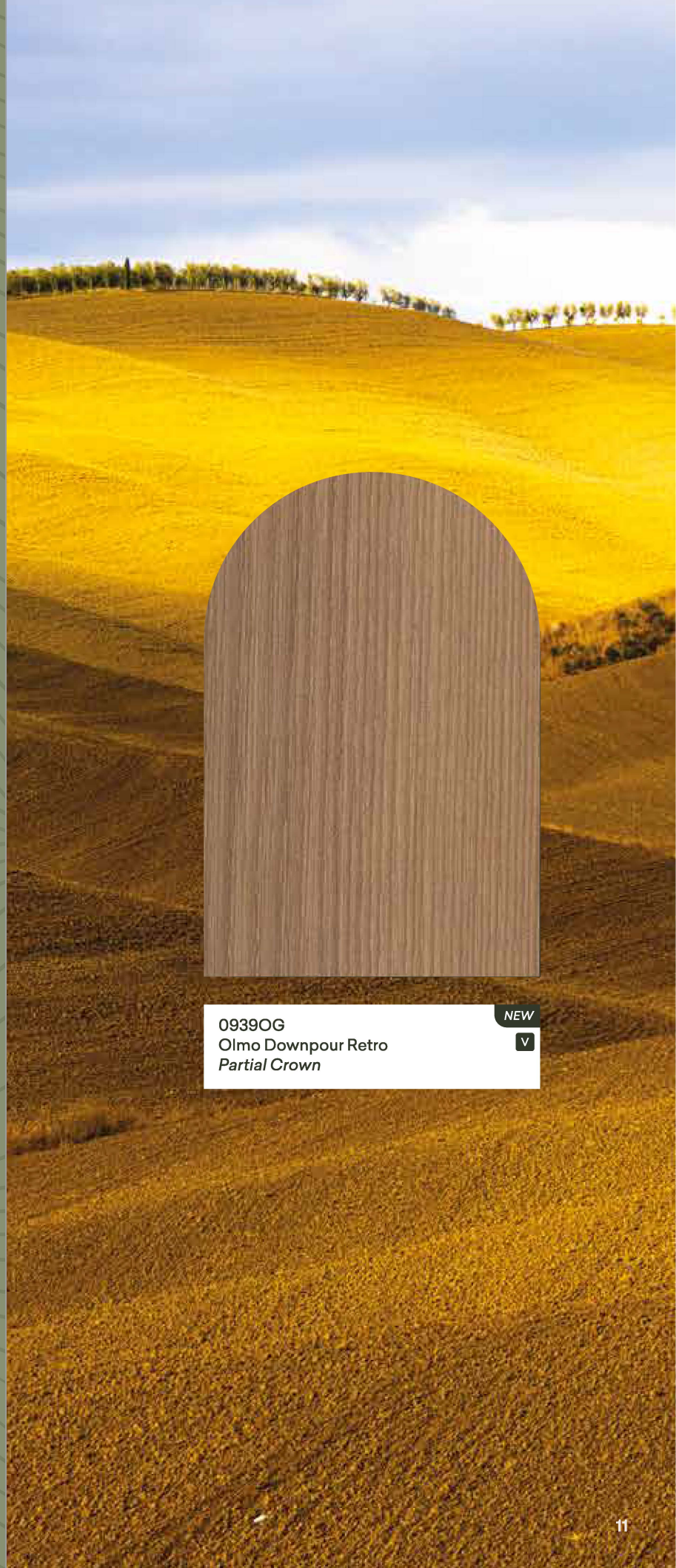
2 0964PT  
Veneto Marble

3 0871OG  
Rovere Planked Naturale

# O

---

## ORGANIC



## SUNLIGHT FALLS UPON A FIELD LIKE LIQUID GOLD.

The ripple of gentle shadows as braided kernels blend on stems. Partial crown on this décor reflect the contours of a wheaten land yielding to the sun's rays.



5969OG  
Olmo Downpour Bianco  
*Partial Crown*

NEW



0937OG  
Olmo Downpour Wheat  
*Partial Crown*

NEW



5970OG  
Olmo Downpour Carbon  
*Partial Crown*

NEW



0939OG  
Olmo Downpour Retro  
*Partial Crown*

NEW



Full View





Hewn by the winds, tinted by the sun,  
carved by the rains.



5976KL  
Rovere Linear Milk  
Straight

NEW



5964KL  
Rovere Linear Wheat  
Straight

NEW



0841KL  
Rovere Linear Smoke  
Straight

NEW



0843KL  
Rovere Linear Coffee  
Straight

NEW



Full View



0956D8  
Teak Meadow Mist  
Full Crown

NEW



5971D8  
Teak Meadow Brown  
Full Crown

NEW



5484KL  
Forest Linear Wheat  
Plank

NEW



5482KL  
Forest Linear Ash  
Plank

NEW



0871OG  
Rovere Planked Naturale  
Plank

NEW



5965OG  
Rovere Planked Carbon  
Plank

NEW



0872OG  
Grimspound Planked Sand  
Plank

NEW



0882OG  
Grimspound Planked  
Plank

NEW



Full View







Time enriches the mountains with character and structure.



5978OG  
Acacia Ash  
*Partial Crown*

NEW  
V



5966OG  
Acacia Naturale  
*Partial Crown*

NEW  
V



5968OG  
Acacia Mocha  
*Partial Crown*

NEW  
V

0878OG  
Acacia Wheat  
*Partial Crown*

NEW  
V

Full View



8806OG  
Eucalyptus Naturale  
*Straight*

NEW  
V



8807OG  
Eucalyptus Thermo  
*Straight*

NEW  
V



8808OG  
Eucalyptus Slate  
*Straight*

NEW  
V



8811D8  
Ash Reed  
*Straight*

NEW  
V



8809D8  
Natural Reed  
*Straight*

NEW  
V



8810D8  
Mocha Reed  
*Straight*

NEW  
V



LIVE IN  
THE GREEN

Dwell in the pleasures of rolling fields. Cool winds and gentle shadows are all part of nature's grace.

Full View





## PEARL EMBELLISHMENTS

Adorned with delicate pearl accents, adding a touch of sophistication to any space. Design that transcends the ordinary and invites the extraordinary into your space.



0844OG  
Olmo Crystal Beige  
Partial Crown

NEW  
V



5977OG  
Olmo Crystal Gray  
Partial Crown

NEW  
V

\*PROTEC+ antimicrobial technology is not available for Metallic Woods such as 0844OG Olmo Crystal Beige and 5977OG Olmo Crystal Gray.

Full View



# FORMICA CORA™

## SURFACES WITH SOUL

The name Cora, derived from the Ancient Greek Κόρη (Kóre), is an epithet of Persephone, the Greek goddess of the soul. It expresses an honest rendering of what lies beneath our surfaces. Formica Cora™ was designed with three inner core colours, each carefully composed to eliminate dark joint lines for a sleek, elegant finish.



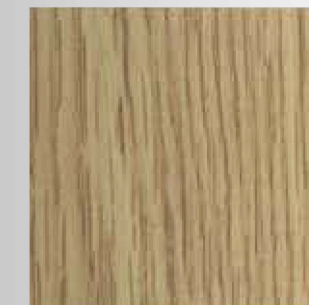
INSIC ELEGANCE



1079NT  
Natural Oak

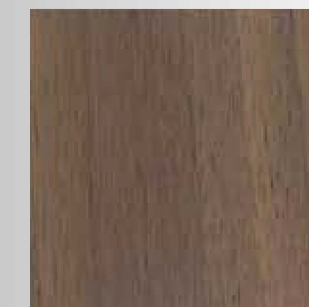


5478NT  
Sand Oak



3737NT  
Light Oak

4'x10'



5487NT  
Oiled Walnut

Full View



# THIS IS BEAUTY, UNINTERRUPTED

Instead of the distinct black lines that border each surface Formica Cora™ gives you the options to select your preferred core colour, delivering grace and elegance; their own show of inner strength.

STANDARD LAMINATE



VS

FORMICA CORA™



PROPERTIES



Eliminating dark joint lines



Antimicrobial (Antibacterial & Antifungal)  
Tested in accordance with JIS Z2801 and ASTM G21

0844OG  
Olmo Crystal Beige  
Partial Crown

NEW

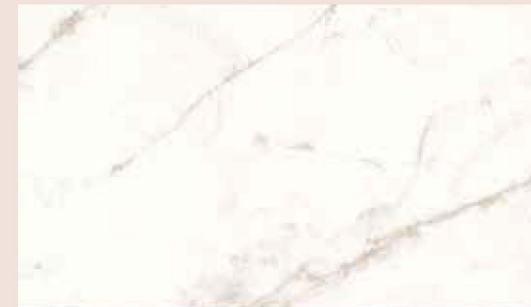


Full View



Perfect for important spaces that ease daily living. Pure splendour to usher flow and presence in the everyday.

Representative décor *with white core*



CR7377NM  
White Jade

core

Representative décor *with light grey core*



CR5784NT  
Ashwood Bone

core

Representative décor *with yellow brown core*



CR5794NT  
Beige Elm

core

INSIC ELEGANCE

own



1079NT  
Natural Oak

ry



5478NT  
Sand Oak

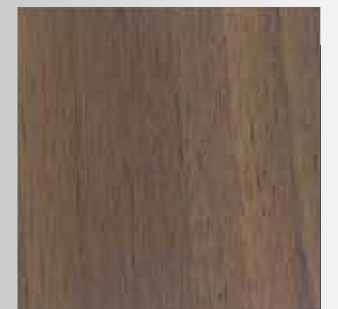
y



3737NT  
Light Oak

4'X10'

cherry



5487NT  
Oiled Walnut

nut

Full View



FORMICA  
**CORA™**

Ready for an upgrade?

Create a seamless and cohesive design without dark joint lines to interrupt the beauty of your space. Elevate your aesthetic effortlessly with wood grain in white core.



0844OG  
 Olmo Crystal Beige  
 Partial Crown

NEW  
 V



CJ5671NT  
 Frassino  
 Partial Crown

core

Full View



Full View



REDEFINED



5668OG  
 Finezza  
 Straight

NEW

V



5671OG  
 Frassino  
 Partial Crown

NEW

V



5669OG  
 Fossile  
 Full Crown

NEW

V

INTRINSIC ELEGANCE

Partial Crown



0870NT  
 Dawn Cherry



1079NT  
 Natural Oak



0867NT  
 Sand Cherry



5478NT  
 Sand Oak



0874NT  
 Hazelnut Cherry



3737NT  
 Light Oak

4'X10'



5486NT  
 Classic Walnut



5487NT  
 Oiled Walnut

Full View



**SELECT OAK**  
Partial Crown



7392NT  
Select Dry Oak 4'X10'



7393NT  
Select Fawn Oak 4'X10'



7389NT  
Select Tan Oak



7391NT  
Select Burnt Oak 4'X10'

**PLANKED OAK**  
Partial Crown



7412NG  
Planked Raw Oak



7394NG  
Planked Drift Oak



9312NG  
Planked Urban Oak



9658NG  
Planked Havana Oak



**LEGNO**  
Partial Crown



8846D8  
Oiled Legno



8847D8  
Jarrah Legno



8845D8  
Bleached Legno



8848D8  
Blacken Legno



8846NT  
Oiled Legno 4'X10'



8847NT  
Jarrah Legno



8845NT  
Bleached Legno 4'X10'



8848NT  
Blacken Legno 4'X10'

**ASH**  
Partial Crown



8842D8  
Weathered Ash



8844D8  
Aged Ash



8843D8  
Natural Ash



8841D8  
White Ash



8842NT  
Weathered Ash



8844NT  
Aged Ash 4'X10'



8843NT  
Natural Ash 4'X10'



ELM  
Partial Crown



6404D8  
Bleached Elm



6405D8  
Bisque Elm



6407D8  
Honey Elm



6406D8  
Mocha Elm



6404NT  
Bleached Elm



6405NT  
Bisque Elm



6407NT  
Honey Elm



6406NT  
Mocha Elm

WALNUT | MAPLE  
Partial Crown



6055D8  
Aged Walnut



9001NT  
Noce Orvieto



5150D8  
American Walnut



5485NT  
Spice Maple



6055NT  
Aged Walnut



9001UN  
Noce Orvieto



5150NT  
American Walnut



5485UN  
Spice Maple



FORMICA  
CORATM

Elevate your space with seamless elegance,  
featuring wood grains in warm yellow-brown core.



CR5785NT  
Ashwood Beige  
Straight

EXCLUSIVE core



CR5794NT  
Beige Elm  
Full Crown

EXCLUSIVE core



CR6404D8  
Bleached Elm  
Partial Crown

core



Full View



0868NT  
Beige Oak



0869NT  
Powdered Oak



5887NT  
Millennium Oak



1541NT  
Carbon Cedar



Full View

ELM  
Partial Crown



6404D8  
Bleached Elm



6405D8  
Bisque Elm



6404NT  
Bleached Elm

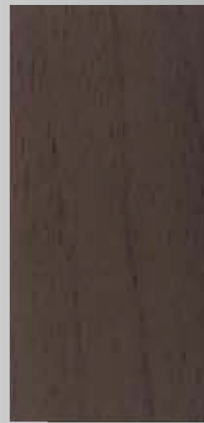


6405NT  
Bisque Elm

WALNUT | MAPLE  
Partial Crown



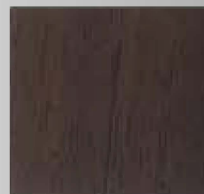
6055D8  
Aged Walnut



9001NT  
Noce Orvieto



6055NT  
Aged Walnut



9001UN  
Noce Orvieto

FORMICA  
**CORA™**

Step into sophistication, upgrade to seamless elegance with wood grains in pristine white core.



CJ5667NT  
Rovere Cattedrale  
Full Crown

EXCLUSIVE core



CR8854NT  
Alabaster Oak  
Partial Crown

core

Full View



Full View



OAK | PEAR | CEDAR  
Partial Crown



8854D8  
Alabaster Oak



8853D8  
Rural Oak



0868NT  
Beige Oak



8854NT  
Alabaster Oak



8853NT  
Rural Oak



0869NT  
Powdered Oak



8967D8  
Logan Oak



5489NT  
Espresso Pear



5887NT  
Millennium Oak



8967NT  
Logan Oak



5489UN  
Espresso Pear



1541NT  
Carbon Cedar

Full View



# AFROMOSIA | BLACKWOOD

Straight



0860NT  
Blond Afromosia

4'x10'



0862NT  
Cherry Afromosia



0861NT  
Olive Afromosia

4'x10'



9436D8  
Dry Blackwood



9437D8  
Toffee Blackwood



9439D8  
Brown Blackwood

4'x10'

# LINEAR HARMONIOUS

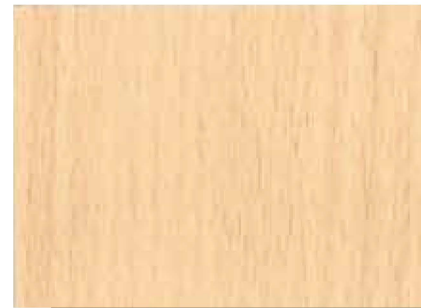
Straight



9397NT  
Bamboo Striped



6930NT  
Natural Cane



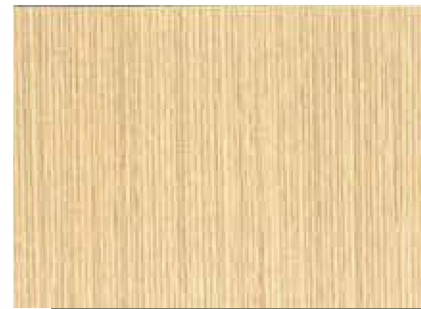
2726NT  
Natural Beech



9205NT  
Legno Finline Brown



5883NT  
Pecan Woodline



9005NT  
Finline

Full View



# FORMICA CORA™

Indulge in the extraordinary, upgrade to seamless elegance featuring wood grains in exceptionally rare and refined light grey core.



CR5793NT  
Buff Elm  
Full Crown

EXCLUSIVE core



CR5784NT  
Ashwood Bone  
Straight

EXCLUSIVE core



wood



5483NT  
Mocca Firwood



wood



5483UN  
Mocca Firwood



on Ash



9451NT  
Slate Cherry



on Ash

Full View



Full View





AFROMOSIA | BLACKWOOD  
Straight



0860NT  
Blond Afromosia

4'X10'



9436D8  
Dry Blackwood

LINEAR HARMONIOUS  
Straight



9397NT  
Bamboo Striped



6930NT  
Natural Cherry



9205NT  
Legno Finline Brown



5883NT  
Pecan Walnut

FORMICA  
**CORA**<sup>TM</sup>

Discover modern refinement, upgrade to seamless elegance, showcasing wood grains and a subtle light grey core.



CR5791NT  
Grayed Oak  
Partial Crown

EXCLUSIVE core



CR8006NT  
Avignon Walnut  
Straight

core

WALNUT | TEAK  
Straight



8006NT  
Avignon Walnut



8860NT  
Weathered Teak



T116NT  
Teak Allover



8849NT  
Natural Teak

4'X10'

VERTICRAFT  
Straight



8578NT  
Sund Elm



6412NG  
Oak Riftwood



5483NT  
Mocca Firwood



8577NT  
Fjord Elm



9281NG  
Ash Riftwood



5483UN  
Mocca Firwood



7398D8  
Comfort Gray Cherry



0812D8  
Cinnamon Ash



9451NT  
Slate Cherry



7399D8  
Bianco Cherry



0812NT  
Cinnamon Ash

Full View



Full View



Full View



BIRCHPLY | WALNUT | MAPLE  
Full Crown



6372NT  
White Washed Birchply



8910NT  
Raw Birchply



6401NT  
Natural Walnut

4'X10'



6402NT  
Thermo Walnut



7012NT  
Amber Maple



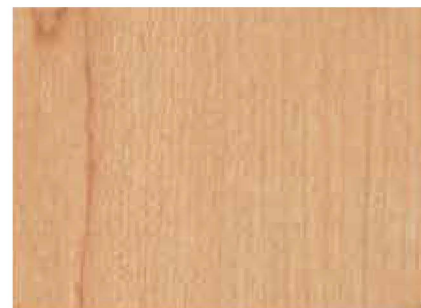
9966NT  
Hill Top Maple



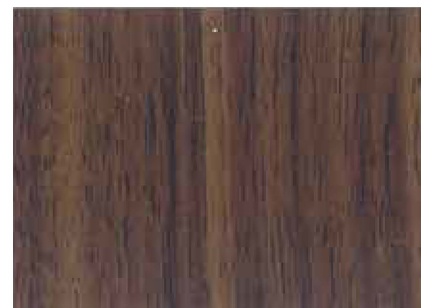
7188NT  
Lincoln Walnut



7012UN  
Amber Maple



9966UN  
Hill Top Maple



7188UN  
Lincoln Walnut

4'X10'

Full View



MAPLE  
Full Crown



8905NT  
Waxed Maple



9222NT  
Grayed Maple



8906NT  
Danish Maple

TIMELESS  
Full Crown



7566NT  
Natural Maple



7182NT  
Dunewood



0369NT  
Vicuna Graceful Oak



7395NT  
Tassili



6053NT  
Chalet Oak



2567NT  
Copper Beech New



6210NT  
Couture Wood



7759NT  
Select Cherry

Full View



HORIZONTAL  
*Horizontal*



8801C8  
Aged Ash Cross



5264NT  
Gracious Sakura

The light tones of wood textures emphasise a serene, seamless space.



1  
0993KL  
Slate Urban

2  
5964KL  
Rovere Linear Wheat

Full View



Q

QUINTESSENCE



0995PT  
Venetian Plaster Urban

NEW  
V

## BEAUTY IS BORN WHEN EARTH'S PIGMENTS QUARRY WITH COLOUR.

The dappling tones of Venetian plaster create a sense of harmony and texture at home. Enlivened by natural light, enigmatic as the light fades. A decor that lives and breathes with its inhabitants.



1002PT  
Venetian Plaster Storm

NEW  
V





0992KL  
Slate Storm NEW  
V

The tactility of urban-inspired surfaces - semi-warm woods and neo cement - brings life to convivial spaces.



## MEMORIES ETCHED IN NATURE.

Every cleft and crevasse harbours a reminder. An imprint of time spent basking in Italy's grand natural beauty. At home, these textures are a quiet call to adventure. Dreams of mountains to be climbed.



0994KL  
Slate Ash NEW  
V



0993KL  
Slate Urban NEW  
V

Full View





1  
1111PT  
Renaissance Slate Greige

## STONES



0964PT  
Veneto Marble

NEW



0991KL  
Off White Stone

NEW



0965PT  
Breccia Silver

NEW



1111PT  
Renaissance Slate Greige

NEW



Full View



STONES



9306NM  
White Bardiglio



5018NM  
Calacatta Cava

4'X10'



7408NM  
Ice Onyx



3460HG  
Calacatta Marble

4'X10'

Full View



FORMICA  
**CORA™**

Formica Cora™ ensures a flawlessly smooth surface, eliminating unsightly dark joint lines for a truly refined aesthetic.



CR9306NM  
White Bardiglio

core



CR3460NM  
Calacatta Marble

core

Full View



8830HN  
Elemental Concrete

4'X10'



9483HG  
Ferro Grafite



Full View



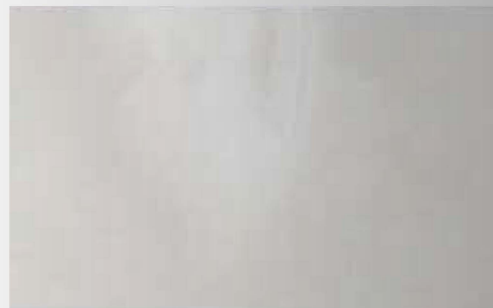
STONES



9306NM  
White Bardiglio



5018NM  
Calacatta Cava



7408NM  
Ice Onyx



3460HG  
Calacatta Marble

FORMICA  
**CORA**<sup>TM</sup>



CR7387NM  
Quartet Chip

EXCLUSIVE core



CR8830MH  
Elemental Concrete

core



Full View



STONES



9307HN  
Silver Shalestone



8830HN  
Elemental Concrete

4'x10'



7402NM  
Pietra Grafite



9483HG  
Ferro Grafite



3476HN  
Jet Sequoia



7403NM  
Nero Marquina

Full View



Full View





# METALLIC STONE

PROTEC+ antimicrobial technology is not available



7377MH  
White Jade



7377HG  
White Jade



7378MH  
Silver Jade



7378HG  
Silver Jade



7383MH  
Steel Jade



7383HG  
Steel Jade

# FORMICA CORATM

Perfect for important spaces that ease daily living. Pure splendour to usher flow and presence in the everyday.



CR7377NM  
White Jade

core

\*PROTEC+ antimicrobial technology is not available for CR7377NM White Jade



7381HG  
Blue Gem



7382HG  
Bronze Desert



7379HG  
Copper Stone



7380HG  
Gold Stone



Full View



Full View



Full View



METALLIC STONE

PROTEC+ antimicrobial technology is not available



7377MH  
White Jade



7378MH  
Silver Jade



7383MH  
Steel Jade

FORMICA  
CORATM



Sunny dispositions  
that spring with  
tenderness and cheer.

METALLIC STONE

PROTEC+ antimicrobial technology is not available



7381MH  
Blue Gem



7381HG  
Blue Gem



7382MH  
Bronze Desert



7382HG  
Bronze Desert



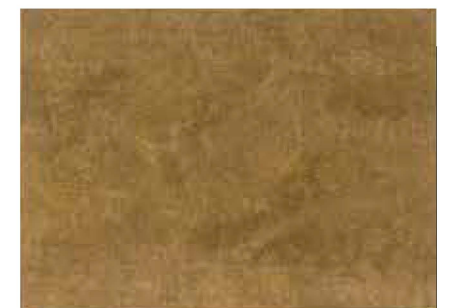
7379MH  
Copper Stone



7379HG  
Copper Stone



7380MH  
Gold Stone



7380HG  
Gold Stone



Full View

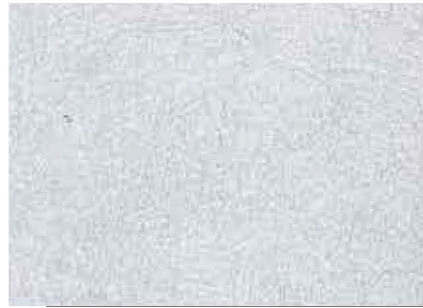


Full View



# PEARLESCENT

PROTEC+ antimicrobial technology is not available



9364L  
Pearl Leather



9365L  
Bronze Leather



9366L  
Smoky Shimmer Leather



7157EG  
Cosmic Dawn



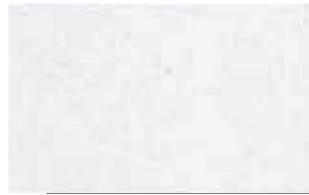
7157TW  
Cosmic Dawn



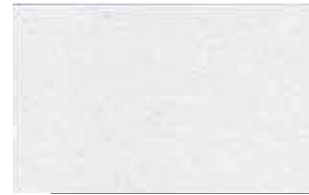
7157HG  
Cosmic Dawn



7171UN  
Metal Pearl Steel



7157SD  
Cosmic Dawn



7157UN  
Cosmic Dawn



7158HG  
Cosmic Dusk



7171SD  
Metal Pearl Steel



7170UN  
Metal Pearl Rosewood



7168UN  
Metal Pearl Silver



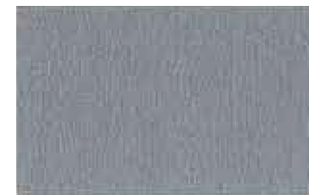
7158UN  
Cosmic Dusk



7158SD  
Cosmic Dusk



8816SD  
Frosted Champagne



8818SD  
Frosted Graphite

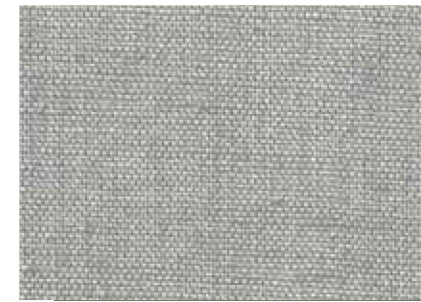


8819SD  
Frosted Black

Full View



# FABRIC



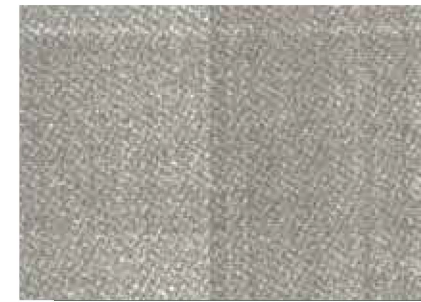
6445LM  
Greige Textile



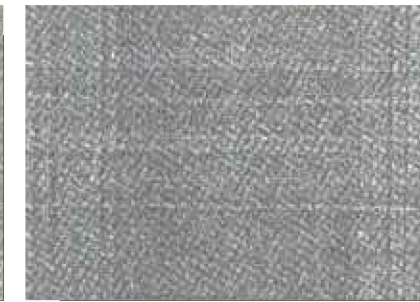
6446LM  
Charcoal Textile



6444LM  
Clay Textile



9532LM  
Beige Plaid



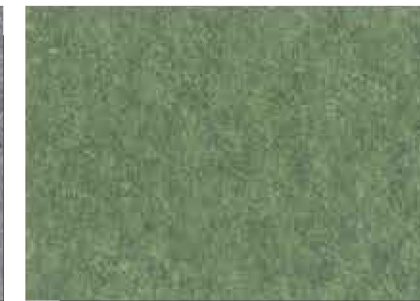
9534LM  
Flannel Plaid



5875LM  
Neutral Weft



4971PA  
Natural Gray Felt



✓ 4974PA  
Green Felt



✓ 4972PA  
Yellow Felt

## DESIGN MADE FROM RECLAIMED MATERIALS



9271LM  
Reclaimed Denim Fiber

9271 Reclaimed Denim Fiber is a real reclaimed denim fiber from cloth production mills, embedded in paper. Not one sheet is exactly alike due to the natural paper making process.

Full View



A modern take on minimalism, layered with stylish warmth.  
Earthen hues make for an inviting sanctuary for rest and relaxation.



**1**  
8979LM  
Raw Weave

**2**  
7976LM  
Bianco Weave

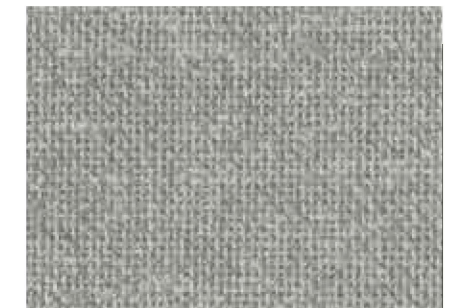


**NEW**  
7976LM  
Bianco Weave



8797LM  
Raw Weave

**NEW**



5479LM  
Grigio Weave

**NEW**



9287LM  
Grigio Antracite Weave

**NEW**

Full View



## PATTERNS

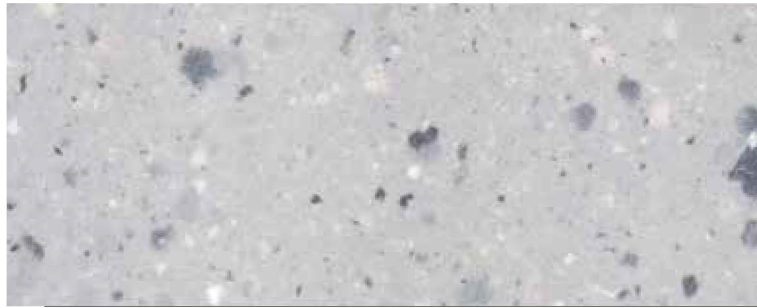


5017NM  
Watercolor Steel



3505CK  
Storm Solidz

## DESIGN MADE FROM RECLAIMED MATERIALS



8812CK  
Tinted Paper Terrazzo

8812 Tinted Paper Terrazzo utilize small fragments of post-production solid colour paper from our factory that would otherwise have gone to waste, these paper chips are reused to create a new paper sheet that is 30% reclaimed material.

This paper technique uses small-batch craft production so no one sheet is exactly alike due to the natural paper making process.

Full View



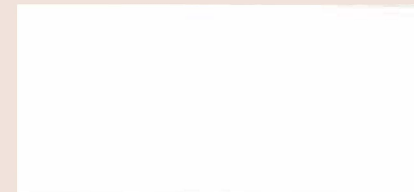
# E

---

## ESSENTIAL

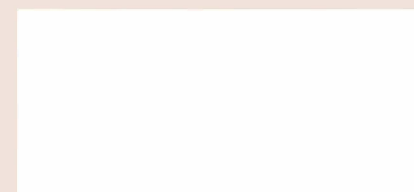
FORMICA  
**CORA™**

Upgrade to seamless design and transform your space effortlessly.



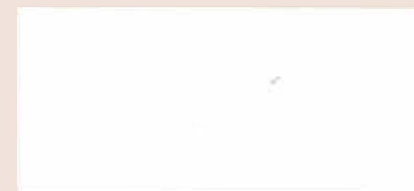
CR3200HG  
Ultra White

core



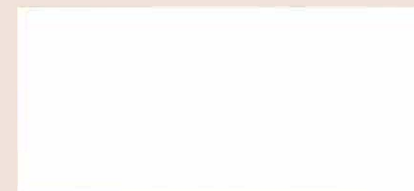
CR3200NM  
Ultra White

core



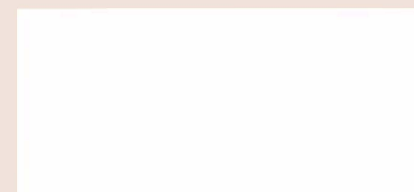
CR7223HG  
New White

core



CR7223NM  
New White

core



CR7949NM  
White

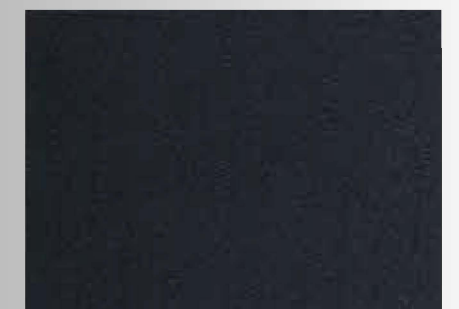
core



3200D8  
Ultra White



0837D8  
Graphite



0909D8  
Black

FORMICA  
**CORA**<sup>TM</sup>

Embrace a modern aesthetic with Formica Cora,  
where elegance meets simplicity.



CR0464NM  
Graystone

core



CR0927NM  
Folkstone

core



CR7921NM  
Birch

core



CR7929NM  
Oyster Grey

core



CR0784NM  
Peruvian Clay

core

SOLID COLOUR IN SPECIAL FINISHES



3200TW  
Ultra White



3200D8  
Ultra White



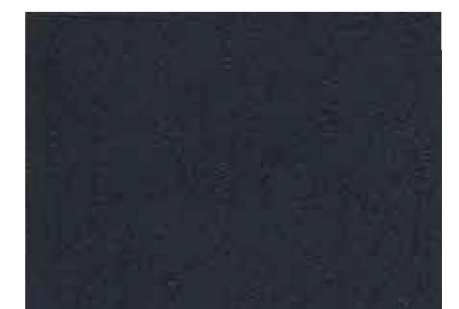
1994MH  
Fox



0837D8  
Graphite



0806MH  
Battalon



0909D8  
Black

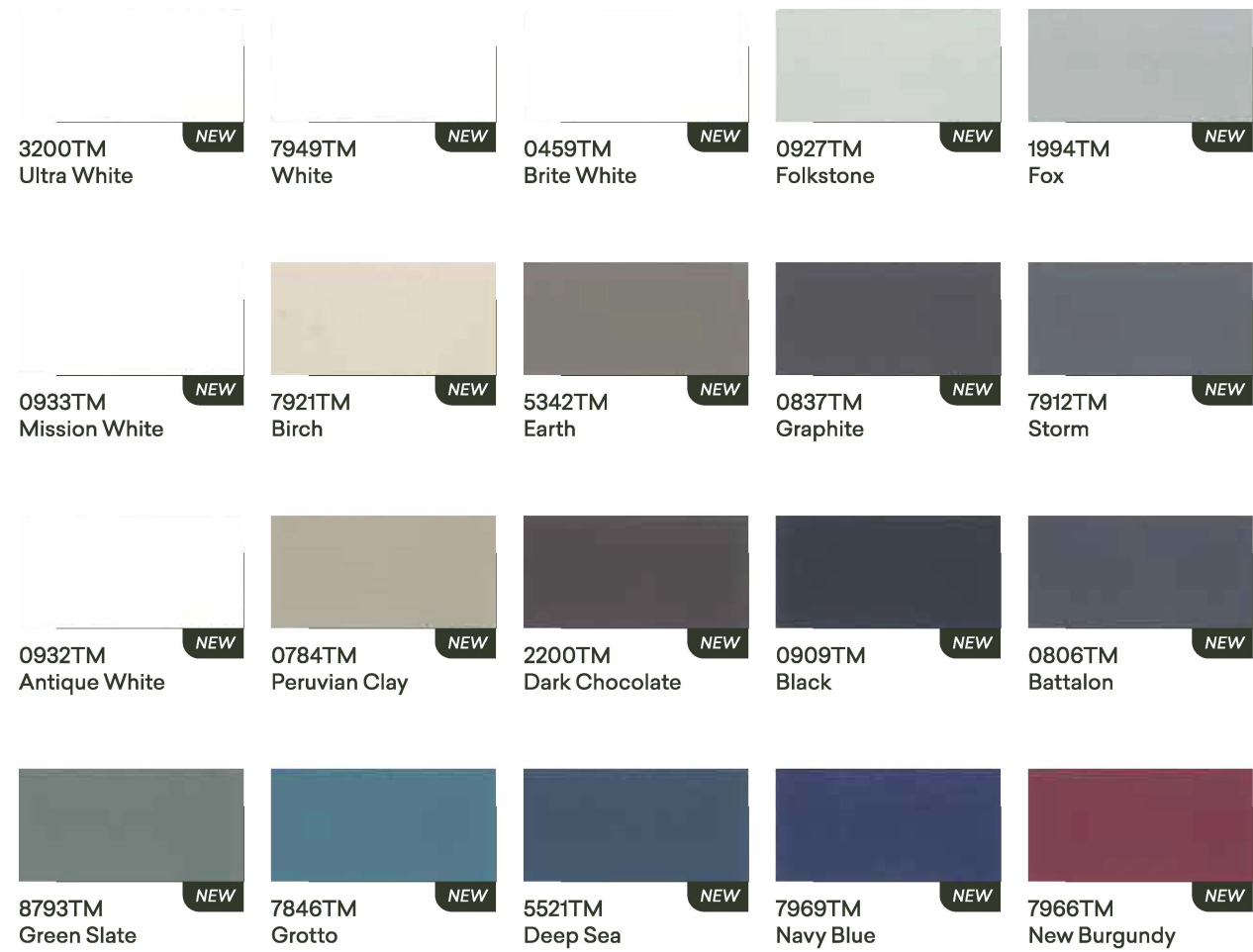
SOLID COLOUR IN MATTE

3200UN Ultra White	1040UN Alpino	7949UN White	0459UN Brite White	0953UN Ice White
7197UN Dover White	2010UN Malibu	7918UN Neutral White	0933UN Mission White	7934UN Pearl
0932UN Antique White	7463UN Sail White	7460UN Ivory	1192UN Porcelana	0925UN Champagne
1093UN Aries	7923UN Surf	0464UN Graystone	7905UN Silver	7902UN Platinum
0958UN Beige	7858UN Pumice	7921UN Birch	7929UN Oyster Grey	0784UN Peruvian Clay
0913UN Indian Smoke	8140UN Brick	8823UN Patina	5342UN Earth	2200UN Dark Chocolate
0927UN Folkstone	1994UN Fox	0961UN Fog	2020UN Tornado	1097UN Citadel
2770UN Sarum Grey	7928UN Mouse	7912UN Storm	0806UN Battalon	
0837UN Graphite	0909UN Black			

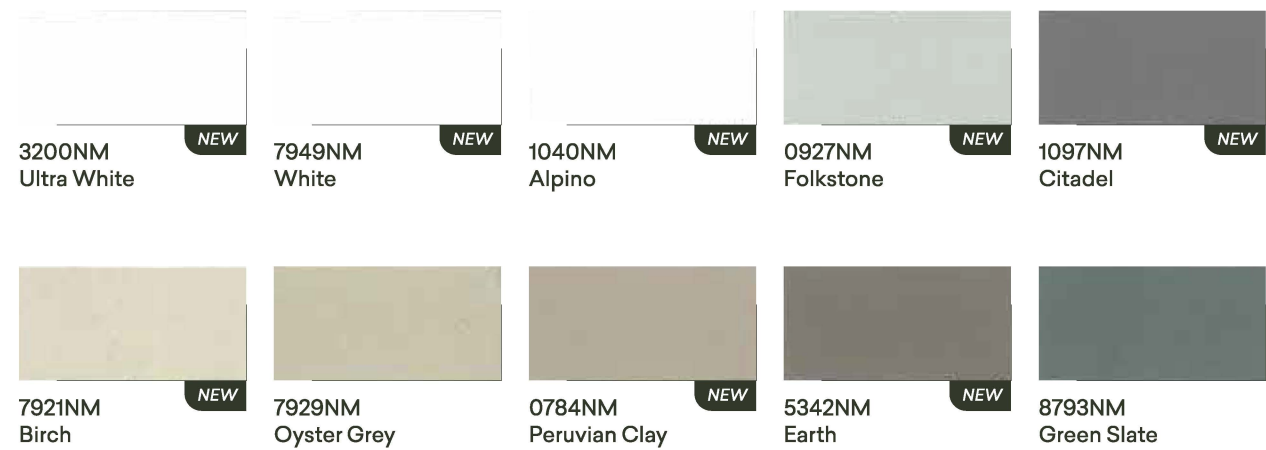
0024UN Saffron	1485UN Chrome Yellow	7940UN Spectrum Yellow	3210UN Levante	8142UN Autumn
5491UN Cameo Pink	8858UN Just Rose	8238UN Blush	2962UN Clementine	2824UN Blaze Red
0232UN Juicy Pink	7384UN Magenta	1238UN Carnaval	0845UN Spectrum Red	7966UN New Burgundy
5494UN Aquamarine	1194UN Iris	0231UN Peaceful Blue	8233UN Violet Ash	8734UN Lavender Ash
2299UN Grecian Blue	7433UN Aqua Marina	5347UN Maui	1871UN Monaco	4171UN Electric
4177UN Lime	6901UN Vibrant Green	7846UN Grotto	2828UN Tropical Blue	7851UN Spectrum Blue
2966UN Opal	8794UN Enamel	7879UN Dusty Jade	8793UN Green Slate	8796UN Algae
7938UN Glacier	0484UN Steel	7880UN Thistle	8821UN Just Blue	7884UN China Blue
8822UN Denim	7914UN Marine Blue	7969UN Navy Blue	5521UN Deep Sea	8244UN Night Forest



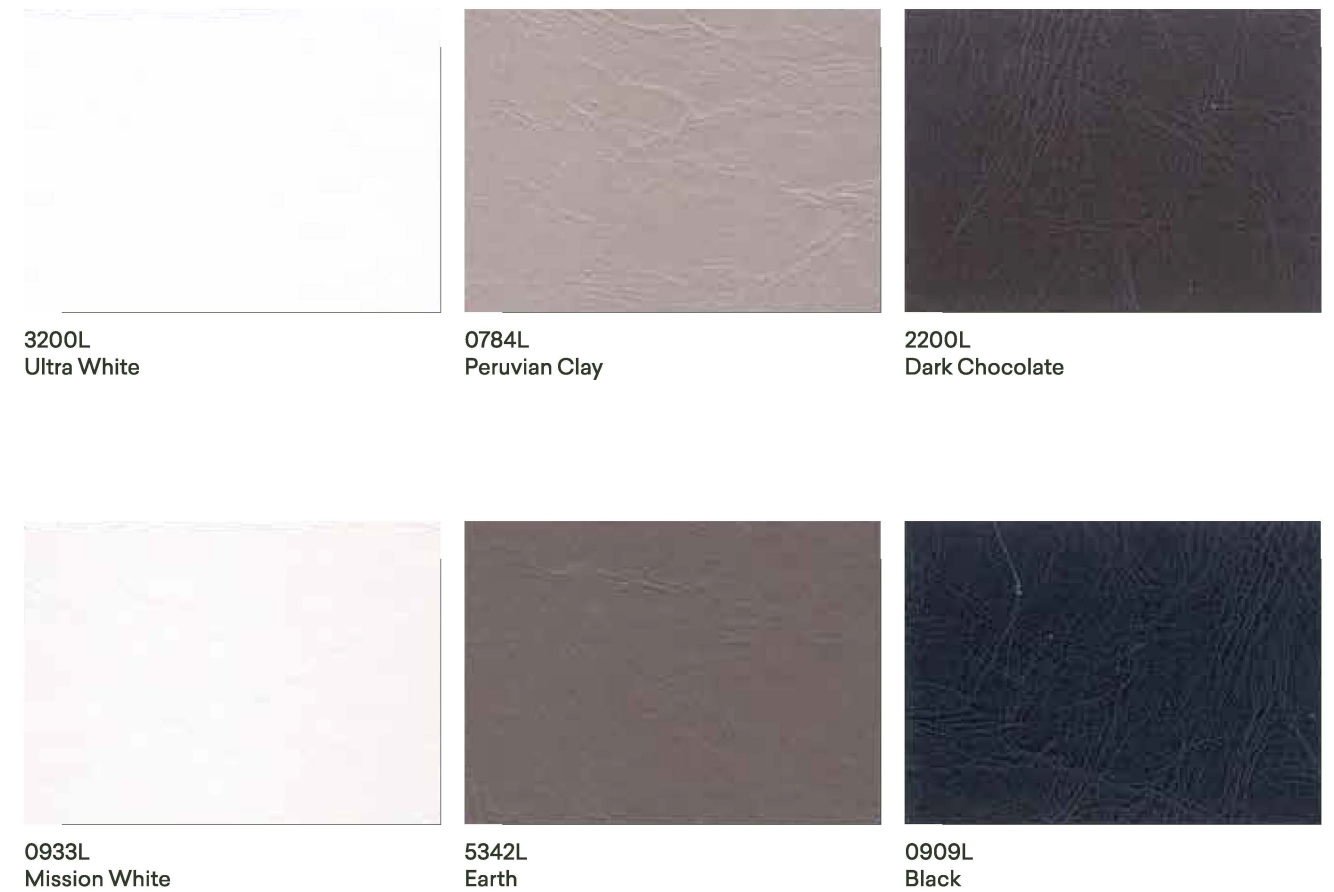
SOLID COLOUR IN TRUE MATTE



SOLID COLOUR IN NUDE MATTE



SOLID COLOUR IN LEATHER



SOLID COLOUR IN HIGH GLOSS 1.0MM



WE MAKE IT WRITABLE, YOU MAKE IT MEMORABLE

This durable, high gloss, non-magnetic dry-erase surface cleans up instantly, making it ideal for homes, offices, classrooms, and other work environments.



1  
5521  
Deep Sea

2  
0806  
Battalon

3  
8854  
Alabaster Oak

# D

DecoMetal®

## DecoMetal®

Go beyond the decorative.  
Experience the stunning  
flexibility of laminates with  
real metal surfaces.



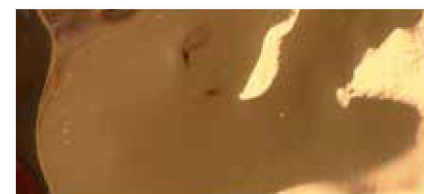
DH141  
Lava Natural



D5474  
Lava Smokey Grey



D5471  
Lava Goldtone



DH144  
Lava Tea

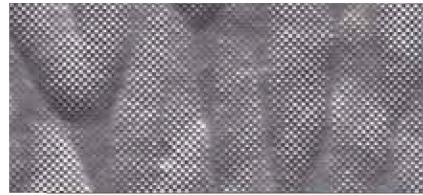


DH089  
Lava Coppertone



Full View





D6484  
Craft Argent



D6483  
Craft Bronzestone



D6485  
Craft Umbra



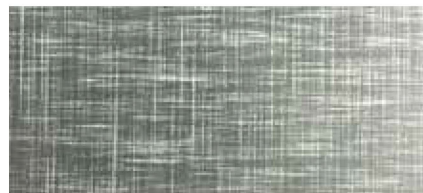
D5306  
Plex Argent



D6486  
Plex Bronzestone



D5310  
Plex Graphite



DH035  
Cross-Brushed Natural



DH036  
Cross-Brushed Goldtone



D8040  
Cross-Brushed Brownish Grey



DH147  
Diamond Bronzestone



DH091\*  
Copper Brass Antique



D4691  
Copper Stratos Diagonal



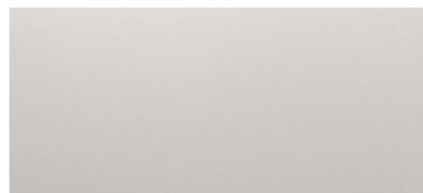
D8004  
Polished Gold Aluminium



DH008  
Mirror Coppertone



DH123  
Mirror Tea



D8003  
Mirror Aluminium



D1990  
Polished Black

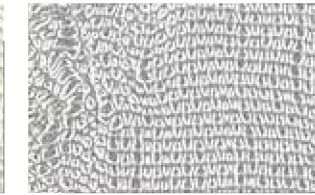
Full View



*\*Disclaimer*  
DH091 Copper Brass Antique | The raw brass foil material imposes a width limitation in design. Consequently, a joint line design effect will appear in the middle of 4'x8' size full sheets.



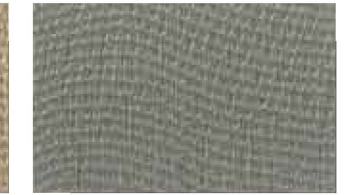
D4941  
Champagne Mesh



D8034  
Aluminium Mesh



D4899  
Bronze Mesh



DH039  
Anthracite Mesh



D8281  
Cascade Natural



D8282  
Cascade Goldtone



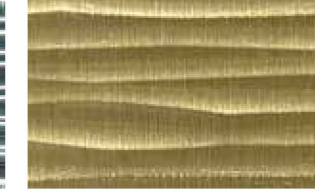
D8285  
Cascade Coppertone



D8284  
Cascade Smokey Grey



D8266  
Cella Polished Smokey Grey



D8287  
Cella Polished Goldtone



DH003  
Cella Coppertone



DH004  
Cella Black



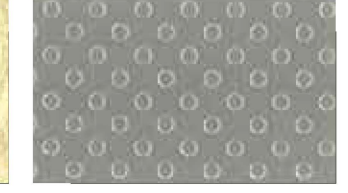
D8291  
Crossline Polished  
Smokey Grey



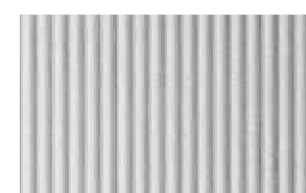
D2807  
Dimpled Bronzestone



D2802  
Dimpled Goldtone



DH105  
Dots Steeltone



D8032  
Vertical Corrugated Matte  
Aluminium



D8017  
Horizontal Corrugated Matte  
Anthracite



D8122  
Anodised Aluminium



D2006  
Matt Bronze Aluminium New



D8025\*  
Copper Crush



D8277  
Moon Light Copper



D8021  
Light Hammer Copper Antiqued

*\*Disclaimer*  
D8025 Copper Crush | Due to copper's natural properties, color variation may occur from samples to actual products. Consult Formica sales representatives before purchase for clarification.

Full View





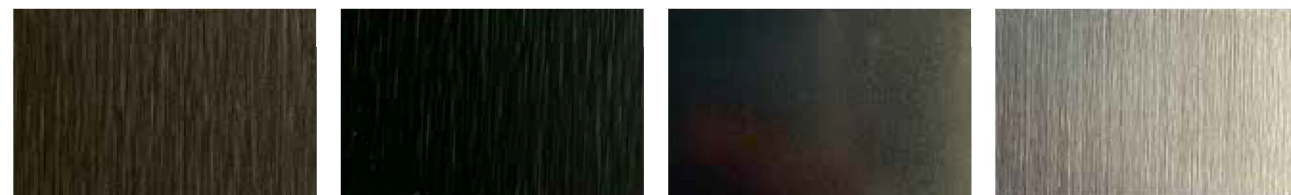
D8124 Silver Brush    D2022 Brushed Aluminium    D2032 Brushed Pewter    D4249 Aluminium Longline



D8103 Champagne Longline    DH137 Brushed Champagne    D2042 Brushed Goldtone    DH005 Brushed Bronzestone



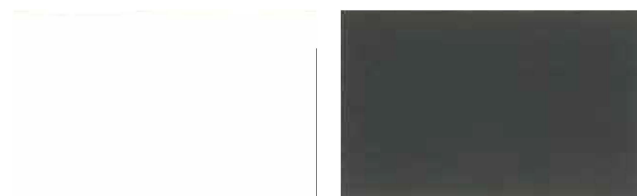
D2052 Brushed Copper Aluminium    DH139 Brushed Rosegold    D8123 Gold Brush    D2126 Bronze Brushed Aluminium



D5312 Brushed Umbra    D8105 Aluminium Brushed Black    DH007 Matte Gunmetal    D2178 Brushed Stainless Steel

## MAGNETIC

Magnetic Laminates can securely hold documents and objects using magnets.



D8206 Gloss Magnetic Whiteboard    D8205 Black Magnetic Chalkboard

- Clean surface with ethyl alcohol after removing the protective film for first-time use. Avoid cleaning agents with fatty substances.
- Write D8206 Gloss Magnetic Whiteboard with whiteboard marker. Avoid solvent-based or Xylene markers and cleaners. Store markers horizontally.
- Allow ink to dry before removal. Clean D8206 Gloss Magnetic Whiteboard with a dry microfiber cloth, avoid using a sponge.
- Write D8205 Black Magnetic Chalkboard with chalk and clean with a damp microfiber cloth, avoid using a sponge.
- Routine cleaning is essential; clean weekly with ethanol for the best results.

Visit [www.formica-asia.info](http://www.formica-asia.info) for more details.

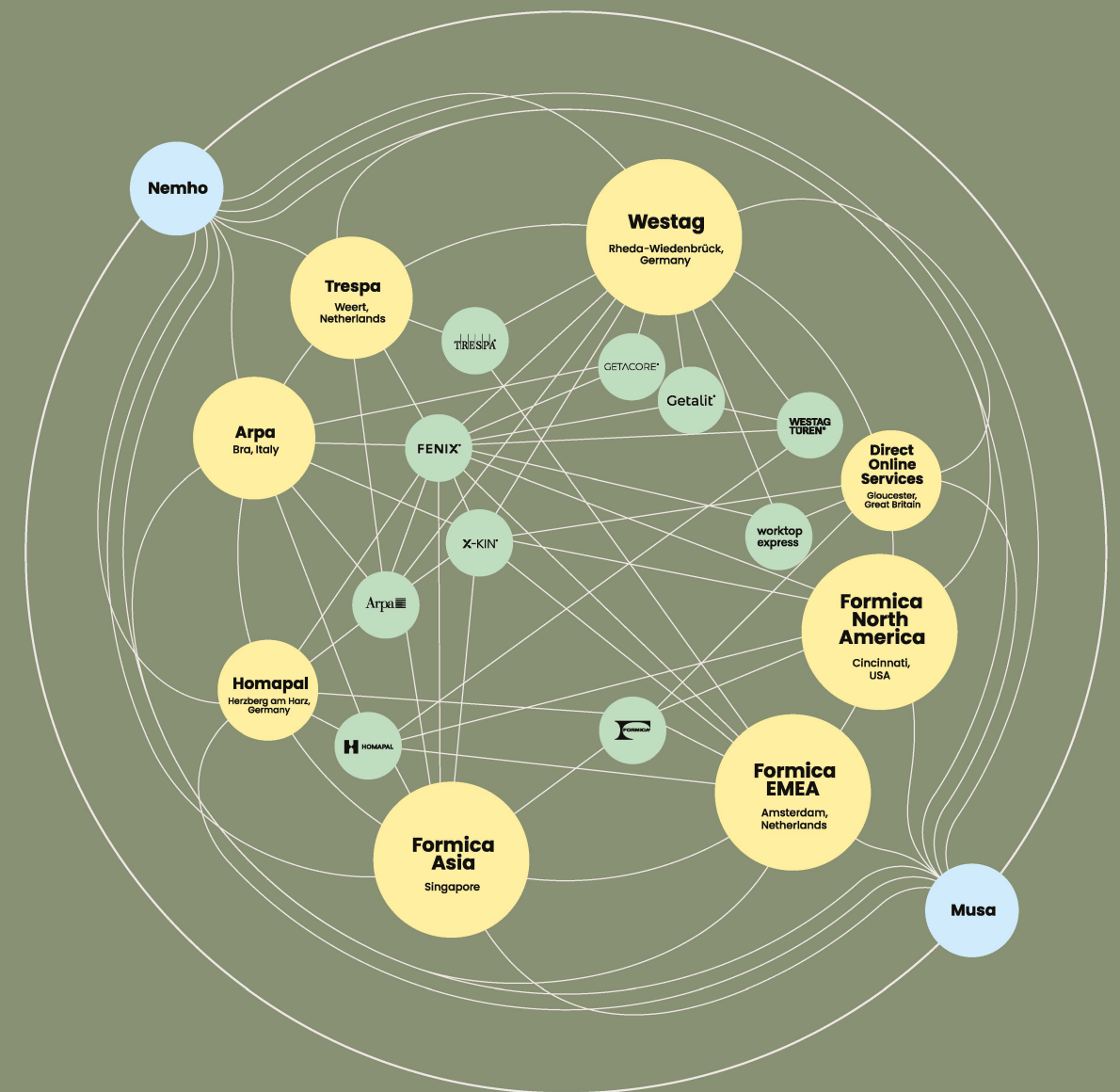
Full View



# ABOUT THE GROUP

We are part of the leading global group in surface materials. We are FENIX, Formica, Homapal, Arpa, Westag, Trespa and Direct Online Services. All active in material technology.

Panels, doors, worktops: our products range from HPL to solid surface, and from decorative metals to FENIX. Our 6,000 employees work in 40 countries around the world and our products are marketed in many more.



# FEEL IN EVERY DETAIL

# SUSTAINABILITY

We are not just about creating physical spaces to live, work and play in. We are about setting the stage for a warm and aspirational future. For that reason, we take extraordinary care with the spaces you create. And ensure every detail is crafted to be felt, by touch and by the heart.



Formica Group is a leading provider of stylistic, smart and sustainable surfacing solutions for commercial and residential customers worldwide. Since 1913, the heritage of Formica Group has been founded on quality, service, and innovative product lines.

As the world's largest manufacturer of High Pressure Laminate (HPL), our sustainability policy is built upon being "good" and having a positive impact on the world around us. Our goal is carbon neutrality by 2030 without losing sight of the product functionality our customers require.

# SINCE 1913, FORMICA® DESIGNS FOR TODAY WITH FOREVER IN MIND.

Herbert A. Faber



Daniel J. O'Conor



As a professional word, "Formica" has been recorded in The Oxford English Dictionary as a replacement for decorative laminates.

## FORMICA'S SERVICES

Formica® offers a complete range of surface decorative products with Protec+® technology (High Pressure Laminate, Formica® Compact®, ColorCore®, Formica® Cora™ and Formica® Custom Graphics™), premium decorative products (DecoMetal® and FENIX®) and a range of functional products (CHguard™). All Formica® High Pressure Laminates conform to European BS EN438 standards. And meanwhile, we have got the certification of ISO 9001: 2015, ISO 14001: 2015, ISO 45001: 2018, and GREENGUARD. Formica® owns manufacturing bases worldwide, with four located in Asia. Major bases are located in Shanghai (China), Jiujiang (China), Hsinchu (Taiwan), Bangkok (Thailand) and India.

## FORMICA'S FOUNDING

Formica® was founded in Cincinnati in 1913 by two young men, Herbert A. Faber and Daniel J. O'Conor. Their high-pressure plastic resins were intended to serve as electrical insulators replacing mineral Mica, which was used for that purpose at the time. Hence the name "Formica" was chosen. World-renowned artists and architects had also begun to recognize the potential of the decorative laminates and specified them for modernist and art deco interiors.

## FORMICA'S LOGO HISTORY



# CHAMPIONING SUSTAINABILITY THROUGH FORMICA® SURFACES.

## GREENGUARD CERTIFICATION

Formica Group prioritizes healthy indoor air quality by minimizing chemical emissions in its products.

We proudly meet GREENGUARD Environmental Institute's strict standards, earning GREENGUARD Certification for Indoor Air Quality for Formica® Laminates, ColorCore®, Compact®, and DecoMetal®.



## SINGAPORE GREEN LABEL

Formica® Laminates and Formica® Compact® Grade Laminate are Singapore Green Label certified by the Singapore Environment Council under "Environmentally Improved Low Emission Low Toxicity" category.



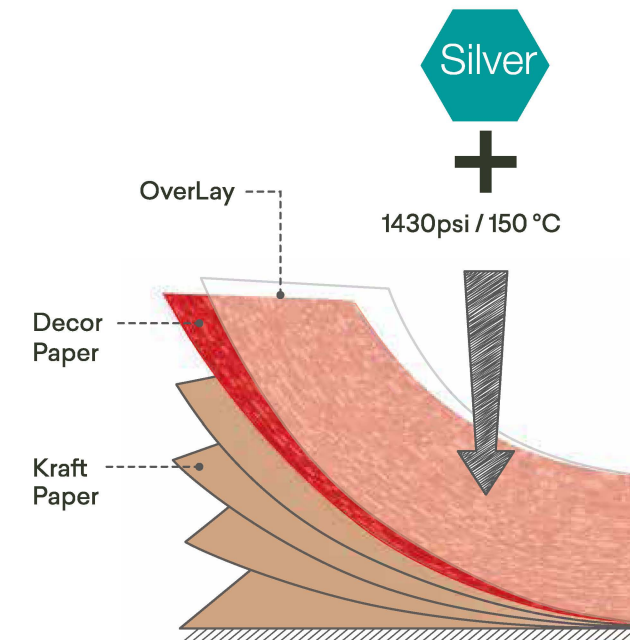
## SINGAPORE GREEN BUILDING PRODUCT CERTIFICATION

The achievement of SGBP certification is a testament to Formica Group's commitment towards making sustainable principles. We are committed to creating innovative products that promote a healthier environment to support sustainable design, and protecting vital resources for future needs via our ongoing efforts to put our green principles in practice through life cycle assessment (LCA), sustainable operations and carbon reduction.



## FOR DURABILITY, COLOUR CLARITY AND FLEXIBILITY

Formica® Laminates<sup>PROTEC+</sup> are made from specially selected kraft and printed papers impregnated with thermosetting synthetic resins and fused together under heat and high-pressure in a controlled environment to form single high-density sheets of laminates.



## HPL SURFACES

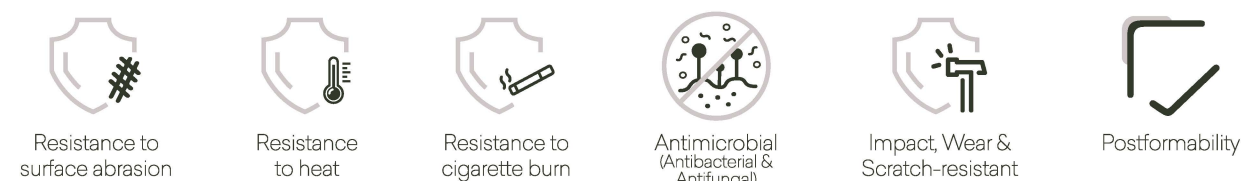
The surface patterns and colours on the laminates are impregnated with melamine-based resins to provide higher resistance against abrasion, shock and impact, heat, and discolouration. Select from our comprehensive range of sheet size and an even wider range of textures and finishes.

## HPL GRADES

Formica® Laminates<sup>PROTEC+</sup> are manufactured to the requirements of EN 438 and ISO 4586 and are available in many grades, each of which with specific properties. The two most commonly applied grades are General Purpose and Post-Forming:

GRADE	PERFORMANCE	TYPICAL APPLICATION
<b>General Purpose</b>	<ul style="list-style-type: none"> <li>Vertical applications and horizontal applications with moderate wear</li> <li>General use</li> </ul>	<ul style="list-style-type: none"> <li>Retail and hospitality furniture</li> <li>Worktops and counter tops</li> <li>Doors</li> <li>Kitchen cabinets</li> <li>Wardrobes</li> <li>Office furniture</li> <li>Interior walls in general transport vehicles</li> </ul>
<b>Post-Forming</b>	<ul style="list-style-type: none"> <li>Vertical applications and horizontal applications with moderate wear</li> <li>Can be formed with controlled temperature and bending</li> </ul>	<p>Where curved section are required :</p> <ul style="list-style-type: none"> <li>Kitchen cabinets doors</li> <li>Worktops and counter tops</li> <li>Wall-cladding</li> <li>Shelves</li> <li>Partitions</li> </ul>

## FORMICA® LAMINATES<sup>PROTEC+</sup> PROPERTIES





## FORMICA® COMPACT™ PROTEC+

Compact™ PROTEC+ is a thick and exceptionally strong yet versatile grade of phenolic laminate manufactured through layers of impregnated Kraft paper and facing each side with printed décor. With variable thickness options of up to 20mm, Compact™ PROTEC+ is suited for high-impact and high-moisture environments such as restroom partitions, lockers laboratory furniture, wall linings and counters or table tops.



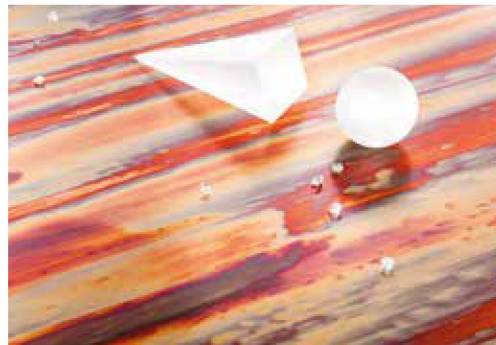
## CUSTOM GRAPHICS™ PROTEC+

Imagine the possibilities of creating a surface to call your own. Design your unique surface art on our high-performance laminate using your design, photograph, logo, illustration or painting. If you can imagine it, we can make it.



## FENIX®

Discover FENIX®, the innovative material for interior design created by Arpa Industriale for a range of vertical and horizontal interior design applications: kitchens, hospitality, transportation, bathrooms and furniture. With low light reflectivity, the FENIX® surface is extremely opaque, soft touch and anti-fingerprint. Thermal healing of superficial micro-scratches is also possible.



## DECOMETAL® SRM

DecoMetal® SRM offers a high-quality, scratch-resistant, and anti-fingerprint ultra-matt surface on selected aluminum, copper, and brass decors. The innovative coating process creates a unique depth and texture, making it suitable for horizontal application and various high-traffic spaces, including exhibitions, shops, dining areas, offices, kitchens, hotels, and restaurants.

## INDEX

Code	Description	Page	Code	Description	Page
0024UN	Saffron	47	1111PT	Renaissance Slate Greige	33
0231UN	Peaceful Blue	47	1192UN	Porcelana	46
0232UN	Juicy Pink	47	1194UN	Iris	47
0369NT	Vicuna Graceful Oak	25	1238UN	Carnaval	47
0459TM	Brite White	48	1485UN	Chrome Yellow	47
0459UN	Brite White	46	1541NT	Carbon Cedar	21
0464UN	Graystone	46	1871UN	Monaco	47
0484UN	Steel	47	1994TM	Fox	48
0784TM	Peruvian Clay	48	1994MH	Fox	45
0784L	Peruvian Clay	49	1994UN	Fox	46
0784NM	Peruvian Clay	48	2010UN	Malibu	46
0784UN	Peruvian Clay	46	2020UN	Tornado	46
0806TM	Battalon	48	2200TM	Dark Chocolate	48
0806MH	Battalon	45	2200L	Dark Chocolate	49
0806UN	Battalon	46	2200UN	Dark Chocolate	46
0812D8	Cinnamon Ash	23	2299UN	Grecian Blue	47
0812NT	Cinnamon Ash	23	2567NT	Copper Beech New	25
0837D8	Graphite	45	2726NT	Natural Beech	22
0837TM	Graphite	48	2770UN	Sarum Grey	46
0837UN	Graphite	46	2824UN	Blaze Red	47
0841KL	Rovere Linear Smoke	12	2828UN	Tropical Blue	47
0843KL	Rovere Linear Coffee	12	2962UN	Clementine	47
0844OG	Olmo Crystal Beige	16	2966UN	Opal	47
0845UN	Spectrum Red	47	3200D8	Ultra White	45
0860NT	Blond Afromosia	22	3200TM	Ultra White	48
0861NT	Olive Afromosia	22	3200L	Ultra White	49
0862NT	Cherry Afromosia	22	3200NM	Ultra White	48
0867NT	Sand Cherry	17	3200TW	Ultra White	45
0868NT	Beige Oak	21	3200UN	Ultra White	46
0869NT	Powdered Oak	21	3210UN	Levante	47
0870NT	Dawn Cherry	17	3460HG	Calacatta Marble	34
0871OG	Rovere Planked Naturale	13	3476HN	Jet Sequoia	35
0872OG	Grimspound Planked Sand	13	3505CK	Storm Solidz	42
0874NT	Hazelnut Cherry	17	3737NT	Light Oak	17
0878OG	Acacia Wheat	14	4171UN	Electric	47
0882OG	Grimspound Planked	13	4177UN	Lime	47
0909D8	Black	45	4971PA	Natural Gray Felt	39
0909TM	Black	48	4972PA	Yellow Felt	39
0909L	Black	49	4974PA	Green Felt	39
0909UN	Black	46	5017NM	Watercolor Steel	42
0913UN	Indian Smoke	46	5018NM	Calacatta Cava	34
0925UN	Champagne	46	5150D8	American Walnut	20
0927TM	Folkstone	48	5150NT	American Walnut	20
0927NM	Folkstone	48	5264NT	Gracious Sakura	26
0927UN	Folkstone	46	5342TM	Earth	48
0932TM	Antique White	48	5342L	Earth	49
0932UN	Antique White	46	5342NM	Earth	48
0933TM	Mission White	48	5342UN	Earth	46
0933L	Mission White	49	5347UN	Maui	47
0933UN	Mission White	46	5478NT	Sand Oak	17
0937OG	Olmo Downpour Wheat	11	5479LM	Grigio Weave	41
0939OG	Olmo Downpour Retro	11	5482KL	Forest Linear Ash	13
0953UN	Ice White	46	5483NT	Mocca Firwood	23
0956D8	Teak Meadow Mist	13	5483UN	Mocca Firwood	23
0958UN	Beige	46	5484KL	Forest Linear Wheat	13
0961UN	Fog	46	5485NT	Spice Maple	20
0964PT	Veneto Marble	33	5485UN	Spice Maple	20
0965PT	Breccia Silver	33	5486NT	Classic Walnut	17
0991KL	Off white Stone	33	5487NT	Oiled Walnut	17
0992KL	Slate Storm	30	5489NT	Espresso Pear	21
0993KL	Slate Urban	30	5489UN	Espresso Pear	21
0994KL	Slate Ash	30	5491UN	Cameo Pink	47
0995PT	Venetian Plaster Urban	29	5494UN	Aquamarine	47
1002PT	Venetian Plaster Storm	29	5521TM	Deep Sea	48
1040NM	Alpino	48	5521UN	Deep Sea	47
1040UN	Alpino	46	5668OG	Finezza	17
1079NT	Natural Oak	17	5669OG	Fossile	17
1093UN	Aries	46	5671OG	Frassino	17
1097NM	Citadel	48	5875LM	Neutral Weft	39
1097UN	Citadel	46	5883NT	Pecan Woodline	22





# INDEX (DecoMetal®)

Code	Description	Page	Code	Description	Page
D1990	Polished Black	54	D8105	Aluminium Brushed Black	56
D2006	Matt Bronze Aluminium New	55	D8122	Anodised Aluminium	55
D2022	Brushed Aluminium	56	D8123	Gold Brush	56
D2032	Brushed Pewter	56	D8124	Silver Brush	56
D2042	Brushed Goldtone	56	D8205	Black Magnetic Chalkboard	56
D2052	Brushed Copper Aluminium	56	D8206	Gloss Magnetic Whiteboard	56
D2126	Bronze Brushed Aluminium	56	D8266	Cella Polished Smokey Grey	55
D2178	Brushed Stainless Steel	56	D8277	Moon Light Copper	55
D2802	Dimpled Goldtone	55	D8281	Cascade Natural	55
D2807	Dimpled Bronzestone	55	D8282	Cascade Goldtone	55
D4249	Aluminium Longline	56	D8284	Cascade Smokey Grey	55
D4691	Copper Stratos Diagonal	54	D8285	Cascade Coppertone	55
D4899	Bronze Mesh	55	D8287	Cella Polished Goldtone	55
D4941	Champagne Mesh	55	D8291	Crossline Polished Smokey Grey	55
D5306	Plex Argent	54	DH003	Cella Coppertone	55
D5310	Plex Graphite	54	DH004	Cella Black	55
D5312	Brushed Umbra	56	DH005	Brushed Bronzestone	56
D5471	Lava Goldtone	53	DH007	Matte Gunmetal	56
D5474	Lava Smokey Grey	53	DH008	Mirror Coppertone	54
D6483	Craft Bronzestone	54	DH035	Cross-Brushed Natural	54
D6484	Craft Argent	54	DH036	Cross-Brushed Goldtone	54
D6485	Craft Umbra	54	DH039	Anthracite Mesh	55
D6486	Plex Bronzestone	54	DH089	Lava Coppertone	53
D8003	Mirror Aluminium	54	DH091	Copper Brass Antique	54
D8004	Polished Gold Aluminium	54	DH105	Dots Steeltone	55
D8017	Horizontal Corrugated Matte Anthracite	55	DH123	Mirror Tea	54
D8021	Light Hammer Copper Antiqued	55	DH137	Brushed Champagne	56
D8025	Copper Crush	55	DH139	Brushed Rosegold	56
D8032	Vertical Corrugated Matte Aluminium	55	DH141	Lava Natural	53
D8034	Aluminium Mesh	55	DH144	Lava Tea	53
D8040	Cross-Brushed Brownish Grey	54	DH147	Diamond Bronzestone	54
D8103	Champagne Longline	56			

Deco Metal®  
Price List



For more product information, please visit [www.formica.com](http://www.formica.com).

For more technical information and certification, please visit [www.formica-asia.info](http://www.formica-asia.info).

