

Formica®
for me



Formica®
for more

Formica® for me Formica® for more



www.formica.com

Dreamers of Tomorrow

Formica® Laminate **PROTEC+**

NEXT GENERATION SURFACING MATERIALS *by* FORMICA GROUP

Next Generation of Surfacing Materials.

A next-generation antimicrobial surfacing material that shows a reduction in microbe count on a surface by up to 99%, with high wear and scratch-resistant properties.

Designed to work in conjunction with regular cleaning and disinfecting practices, Formica® Laminate^{PROTEC+} is a strong and post-formable laminate that provides high protection, and reduces cross contamination with its antibacterial, antifungal properties.

This high-performance range[^] is created for protection throughout its lifespan*, for hygienic surfaces for you and your family.

PROPERTIES



Antimicrobial
(Antibacterial & Antifungal)



Improved Gloss Level



Enhanced Wear &
Scratch-resistant



Postformability

Tested in accordance with JIS Z2801 and ASTM G21

[^]This technology does not cover for Pearlescent and DecoMetal® range

*Provided the surface is properly maintained in accordance with Formica's maintenance and care guidelines and the surface is not subject to harsh environments, damage, scratches and excessive wear & tear.

Makers of Change, One Surface at a time.

Formica® challenges the way we imagine spaces and surfaces in new, different perspectives, and this catalog is no exception.

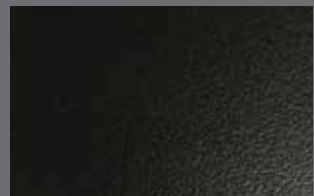
The Formica® 2021 Asia Collection Catalog unravels surfacing staples and hyper-realistic materials to liberate the imagination and set you on a journey of rediscovery through a different lens, where familiar comforts and spaces have new meaning in this new era.

As a brand synonymous with surfacing and steeped in over 100 years of design heritage, Formica® continues to raise visionaries within makers, builders and dreamers alike, inviting them to create new experiences of comfort in the spaces we occupy.

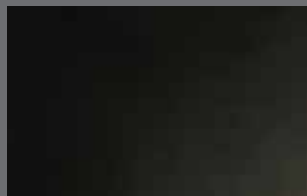
Go on, dream on; define spaces for us to live in, in a new tomorrow.

06	TEXTURES
07	PROLOGUE
11	Metallic Stones & Pearlescent
19	Patterns
27	Wood Grains
47	Solid Colours Writable Surfaces
55	Premium Color Core® PROTEC+ Magnetic Laminates Decometal® Custom Graphics™ PROTEC+
67	EPILOGUE
71	INDEX
76	PRODUCT PROPERTIES
77	TECHNICAL INFORMATION
78	OTHER PRODUCTS
	THE BRAND
81	ABOUT FORMICA®
82	SUSTAINABILITY
83	ASIA OFFICES

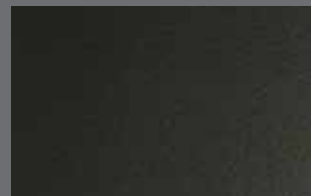
Textures



Matte™ (UN) 4'x10' / 5'x10' / 5'x12' / 6'x12' / 6'x14'



Nude Matte (NM)



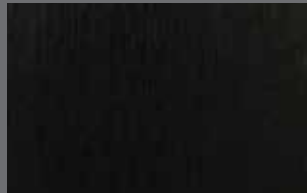
Chalk (CK)



NDF (N) 4'x10' / 5'x12' / 6'x12'



High Gloss (HG) 4'x10' / 5'x12' / 6'x12' / 6'x14'



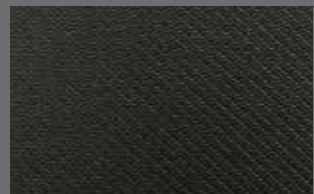
Brushed™ (SD) 1210x2420 mm



Prismatic (PR)



Sculpted™ (SP) 5'x12' / 6'x12' / 6'x14'



Jeans (JN)



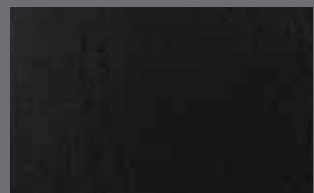
Linum (LM)



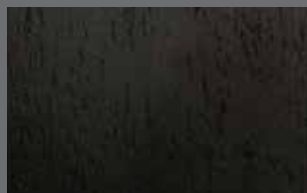
Leather (L) 4'x10'



Honed™ (HN) 4'x10' / 5'x12'



Naturelle™ (NT) 4'x10' / 5'x10' / 5'x12' / 6'x14'



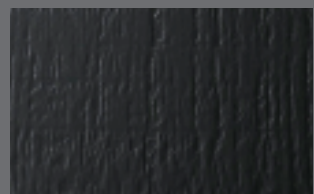
Natural Grain (NG)



Drygrain (DB) 4'x10' / 6'x12' / 6'x14'



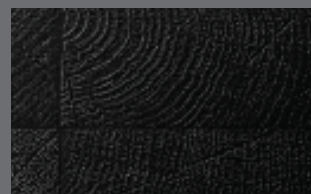
Drygrain Cross (CB)



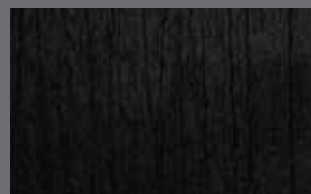
Sawcut (ST) 6'x12' / 6'x14'



Truewood (TW)



Endgrain (EG)



Wirebrush (WB) 6'x14'



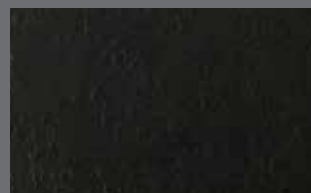
Linea (LN)



3-Dimensionals (3D) 1210x2420 mm



Interior Matte (IM)



Megalith (MH)



VCarve (VC)

Prologue





VCarve (VC)

size 120x240 CM



Endgrain (EG)

size 22x32 CM



Megalith (MH)

size 120x240 CM



Truewood (TW)

size 120x240 CM

Look through the viewfinder.
It's a New World.

Redefine function and form,
how we work and play.

Rooms and places
where we live and breathe,
shape-shifting to fit new needs.

To re-experience
places we once
knew, anew.



Where escapes
become explorations



- | | | | |
|---|------|-------------------|-----|
| 1 | 7399 | Bianco Cherry | P29 |
| 2 | 7381 | Blue Gem | P14 |
| 3 | 7171 | Metal Pearl Steel | P17 |
| 4 | 7377 | White Jade | P13 |
| 5 | 8571 | Twilight Shade | P17 |

Metallic Stones

Edgeband available 4'x10' Available upon request



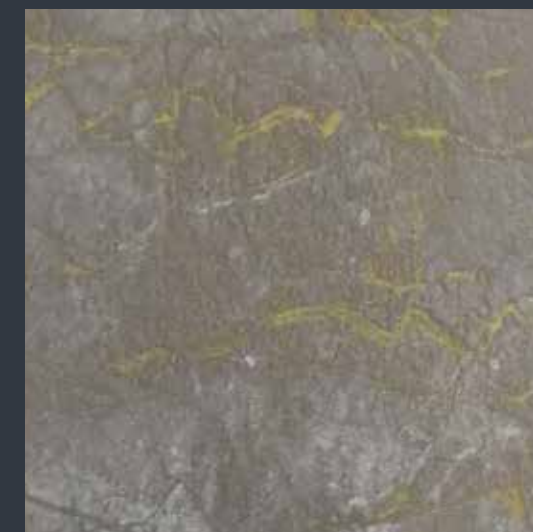
7377MH
White Jade



7377HG
White Jade



7383MH
Steel Jade



7383HG
Steel Jade

A

B



Pearlescent Collection is post-formable upon request and it does not have antimicrobial property.

Metallic Stones

Edgeband available 4'x10' Available upon request



7378MH
Silver Jade



7378HG
Silver Jade



7382MH
Bronze Desert



7382HG
Bronze Desert



7381MH
Blue Gem



7381HG
Blue Gem

A

B

A

B



Metallic Stones

Edgeband available 4'x10' Available upon request

Pearlescent

5' width Available upon request 6' width Available upon request



7380MH
Gold Stone



7380HG
Gold Stone



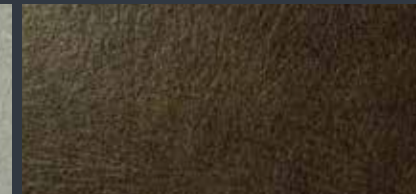
7379MH
Copper Stone



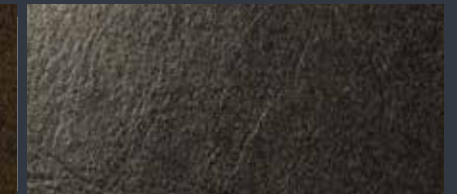
7379HG
Copper Stone



9364L
Pearl Leather



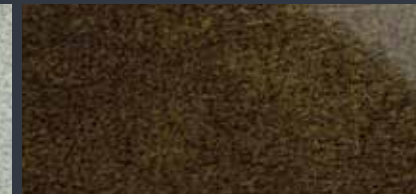
9365L
Bronze Leather



9366L
Smoky Shimmer Leather



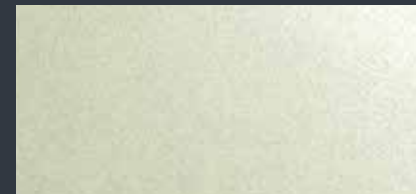
9364HG
Pearl Leather



9365HG
Bronze Leather



9366HG
Smoky Shimmer Leather



7157HG
Cosmic Dawn



7157EG
Cosmic Dawn



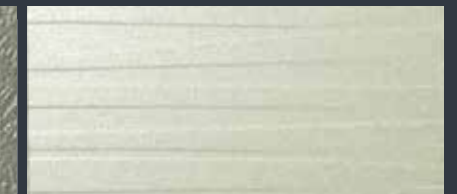
7157TW
Cosmic Dawn



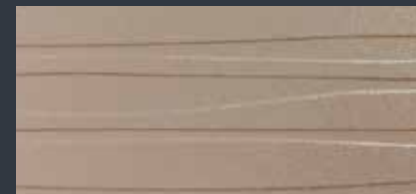
7158HG
Cosmic Dusk



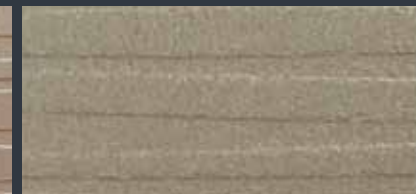
7171EG
Metal Pearl Steel



7157SP
Cosmic Dawn



7170SP
Metal Pearl Rosewood



8816SP
Frosted Champagne



8819SP
Frosted Black

A

B

A

B

C



Pearlescent

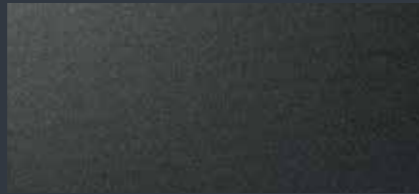
E Edgeband available
 I 4'x10' Available upon request
5 5' width Available upon request
 6 6' width Available upon request

The Lounge

1



8574NM
Twilight Bronze



8571NM
Twilight Shade

2



7157UN 5 6
Cosmic Dawn



7168UN 6
Metal Pearl Silver

3



7171UN
Metal Pearl Steel



7158UN 6
Cosmic Dusk



7170UN 6
Metal Pearl Rosewood

4



7157SD
Cosmic Dawn



7158SD
Cosmic Dusk



7171SD
Metal Pearl Steel

5



8818SD
Frosted Graphite



8816SD
Frosted Champagne



8819SD
Frosted Black

A

B

C



Where relaxation
becomes a space of
invigoration



- ① 9511 Layered Sand P25
- ② 9510 Layered Black Sand P25
- ③ 8140 Brick P49

Patterns

Edgeband available 4'x10' Available upon request



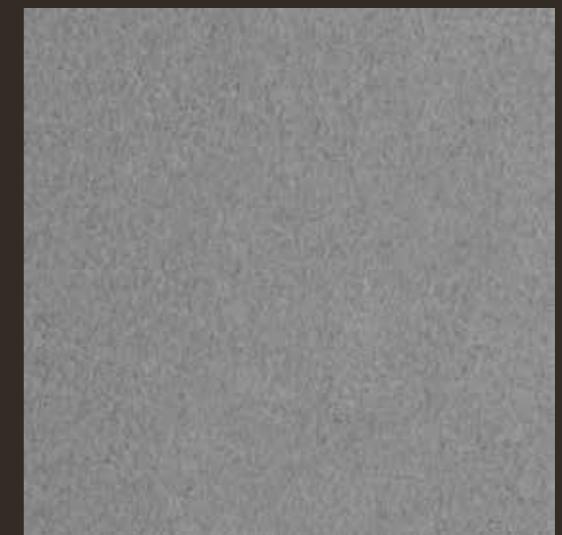
4972PA
Yellow Felt



4973PA
Orange Felt



4974PA
Green Felt



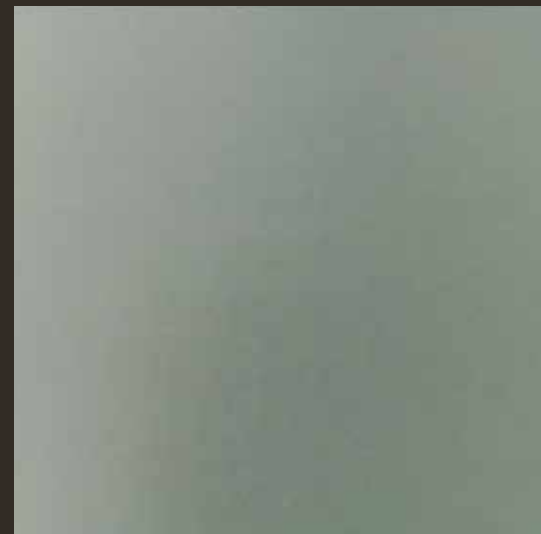
4971PA
Natural Gray Felt

A

B



Paper texture (PA) is produced only in general purpose grade without post-forming application. Recommend for vertical application only. Paper texture is not customizable with other décors. This texture is only intended for the felt design (#4971, #4972, #4973, #4974)



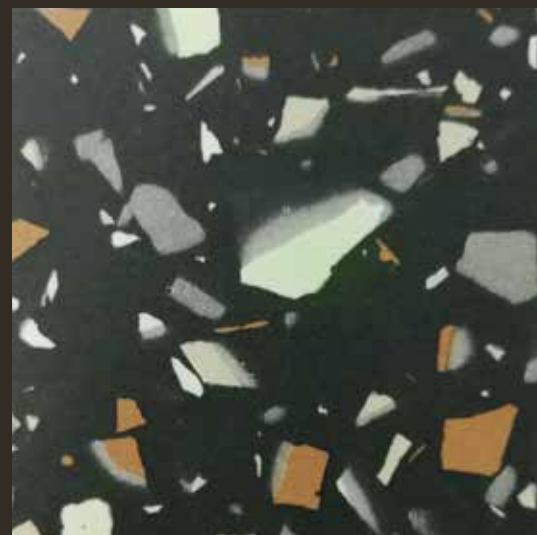
7386NM
Watercolor Glass



5017NM
Watercolor Steel



7387NM
Quartet Chip



8387NM
Black Chip

A

B



TEXTILE



5875LM
Neutral Weft



6444LM
Clay Texture



6445LM
Greige Texture



6446LM
Charcoal Texture

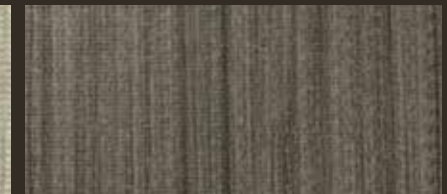
TWILL



8826JN
Neutral Twill



8826LM
Neutral Twill



8828LM
Earthen Twill

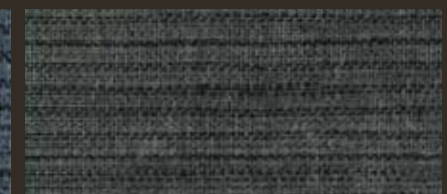
RAW SILK



9521LM
Turquoise Raw Silk



9524LM
Indigo Raw Silk



9525LM
Shadow Raw Silk

PLAID



9534LM
Flannel Plaid



9532LM
Beige Plaid

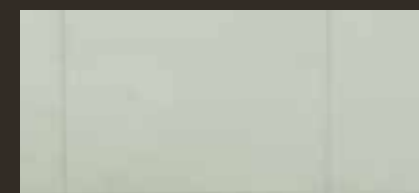


9535LM
Flint Plaid



9536LM
Menswear Plaid

GRID



9313HG
Imagi Grid

ENERGY



5527LM
Energy Cotton



5528LM
Energy Lemon

A

B

C

D



RECLAIMED



9271JN
Reclaimed Denim Fiber



9271LM
Reclaimed Denim Fiber

DISCLAIMER :

9271 Reclaimed Denim Fiber is real reclaimed denim fiber from cloth production mills, embedded in paper. Hence, no one sheet is exactly alike due to the natural paper making process. Jeans (JN) finish is a typical denim diagonal twill that adds true-to-touch realism, the laminate sheet will have a directional texture.



8812CK
Tinted Paper Terrazzo



9684CK
Natural Recycled Kraft

DISCLAIMER :

8812 Tinted Paper Terrazzo is made from small fragments of Formica's post-production solid color paper to create a new paper sheet. Hence no one sheet is exactly alike. Inspired by common kraft paper design, 9684 Natural Recycled Kraft paper design is created with 100% recycled pulp, additives of burlap fiber from recycled coffee bags and coffee bean chaff. Every sheet is unique. Please order from the same batch to avoid color deviation.

PAINT SCRAPE

SOLIDZ



8994CK
Paint Scrape Steel



8996CK
Paint Scrape Black



3505CK
Storm Solidz



3505EG
Storm Solidz

ICE



9528CK
Iced Blush



9527CK
Iced Grey



9529CK
Iced Mint



5018VC
Calacatta Cava



5018NM
Calacatta Cava



9510CK
Layered Black Sand



9511CK
Layered Sand

A

B

C

D

A

B



1



7408NM
Ice Onyx



7402NM
Pietra Grafite



6363HN **E I**
Elemental Ash

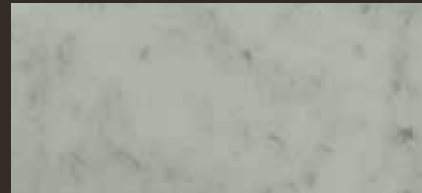
2



3458HN **E I 5**
Travertine Silver

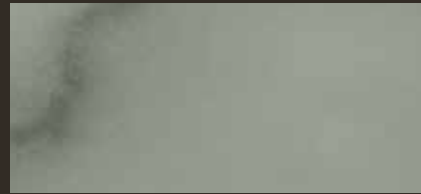


9310NM **E**
White Marble Herringbone



3421HG **I**
Bianca Luna

3



3460HG **E I 5**
Calacatta Marble



9306NM **E**
White Bardiglio



8830HN **E I 5**
Elemental Concrete

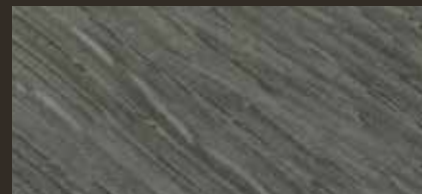
4



6317HN **E I**
Weathered Cement



9307HN **E I**
Silver Shalestone



9311NM **E**
Silver Oak Herringbone

5



9302HN **E I**
Fantasy Marble

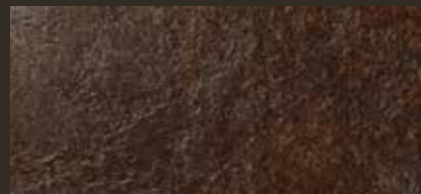


7403NM
Nero Marquina

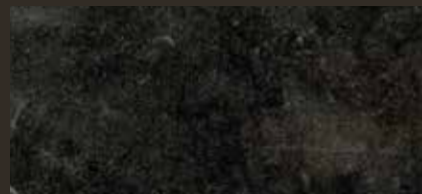


3476HN **E I 5**
Jet Sequoia

6



8832HN **I**
Elemental Corten



9483HG **I**
Ferro Grafite

A

B

C

The Home



Where urban houses become nature homes



- 1 8244 Night Forest P49
- 2 8142 Autumn P49
- 3 9312 Planked Urban Oak P30
- 4 9658 Planked Havana Oak P30

Wood Grains

Edgeband available 4'x10' Available upon request
 5' width Available upon request 6' width Available upon request



7399D8  Bianco Cherry



7398D8  Comfort Gray Cherry



7388D8  Scraped Wood

A

B



Wood Grains

Edgeband available 4'x10' Available upon request

5' width Available upon request 6' width Available upon request

1



7394NG
Planked Drift Oak



7412NG
Planked Raw Oak



7392NT
Select Dry Oak



7393NT
Select Fawn Oak

1

2



9312NG
Planked Urban Oak



9658NG
Planked Havana Oak



7389NT
Select Tan Oak



7391NT
Select Burnt Oak

2

A

B

A

B



STRAIGHT GRAIN

ELM

1



8577NT **I**
Fjord Elm



8578NT **I**
Sund Elm

AFROMOSIA

2



0860NT **E I 5 6**
Blond Afrosia



0861NT **E I 6**
Olive Afrosia



0862NT **I 6**
Cherry Afrosia

SMOKY WOOD

3



8006NT **E I**
Avignon Walnut



0812D8 **I 6**
Cinnamon Ash

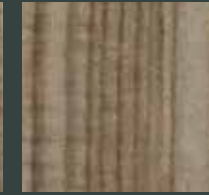


0812NT **E I 6**
Cinnamon Ash

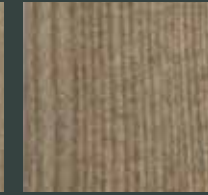
4



5483NT **E I 6**
Mocca Firwood



5483UN **I 6**
Mocca Firwood



5483WB **6**
Mocca Firwood



0338NT **I**
Blackened Linewood

A

B

C

D



STRAIGHT CLASSICS



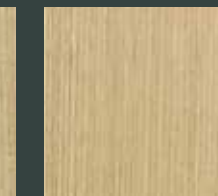
2726NT **E I 6**
Natural Beech



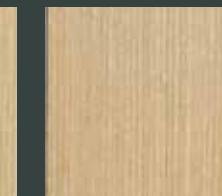
2726UN **I 6**
Natural Beech



9005NT **E I 6**
Finesline



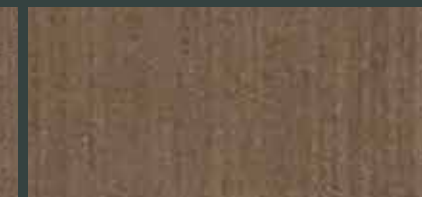
9005LN
Finesline



9005UN **I 6**
Finesline



9006NT **I**
Finesline Chocolate



9006LN
Finesline Chocolate



9006UN **I**
Finesline Chocolate



5883NT **I**
Pecan Woodline



9205NT **E I 6**
Legno Finesline Brown



9205UN **I 6**
Legno Finesline Brown

FIBERWOOD



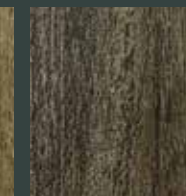
8914D8 **E I**
Weathered Fiberwood



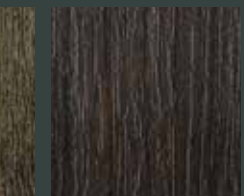
8916D8 **E I**
Blackened Fiberwood



8913NT **I**
Oak Fiberwood



8915D8 **E I**
Walnut Fiberwood



8917D8 **I**
Java Fiberwood

A

B

C

D

E



STRAIGHT GRAIN

TEAK



8849NT 5
Natural Teak



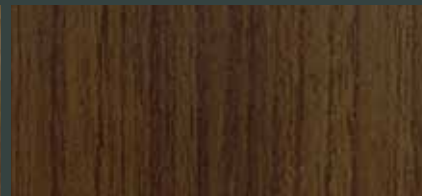
8849ST
Natural Teak



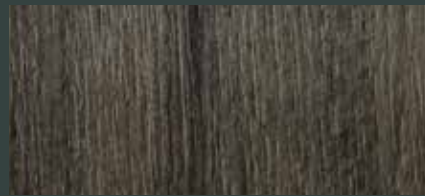
T116NT 6
Teak Allover



T116WB
Teak Allover



T116UN 6
Teak Allover



8860NT 5 6
Weathered Teak



9394NT
Vintage Teak



9394UN
Vintage Teak

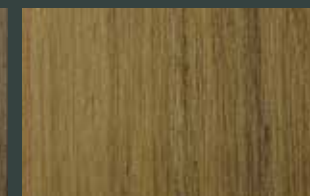
BLACKWOOD



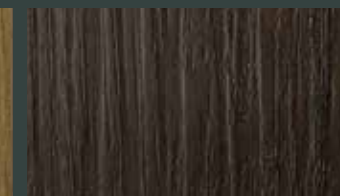
9435D8 1
Raw Blackwood



9436D8 5 6
Dry Blackwood



9437D8 1
Toffee Blackwood



9439D8 1
Brown Blackwood

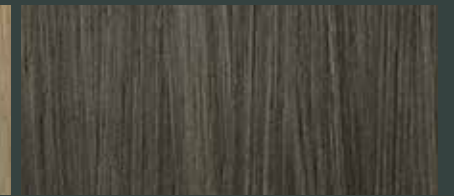
STRANDS



8834NT 5
Smoke Strand



6212NT 1
Wheat Strand



8836NT 5
Mocha Strand

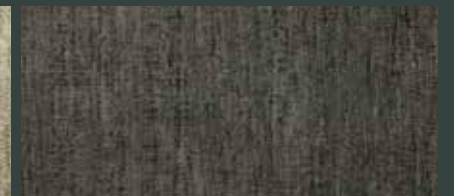
CHERRY



9440NT 1
Nude Cherry



9450NT 1
Powdered Cherry



9451NT 6
Slate Cherry



9452NT 1
Antiqued Cherry

BAMBOO



9397NT 1
Bamboo Striped



9397UN 1
Bamboo Striped



6930NT 5 6
Natural Cane

A

B

C

D

A

B

C



PARTIAL CROWN GRAIN

CHERRY

1



0870NT I
Dawn Cherry



0867NT E I
Sand Cherry



0874NT I
Hazelnut Cherry

ASH & EXOTICS

2



8843D8 I 6
Natural Ash



8843NT E I 5 6
Natural Ash



8843WB 6
Natural Ash

3



8844D8 I 6
Aged Ash



8844NT E I 6
Aged Ash



8844WB 6
Aged Ash

4



8842D8 I
Weathered Ash



8842NT E I
Weathered Ash



0813NT E I 5 6
Cuban Wood

5



8841D8 E I
White Ash

A

B

C



WALNUT

1



5486NT E I 6
Classic Walnut



5486UN I 6
Classic Walnut

2



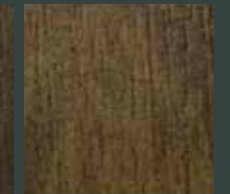
5487NT E I
Oiled Walnut



5487UN I
Oiled Walnut



6055D8 I
Aged Walnut



6055NT E I
Aged Walnut

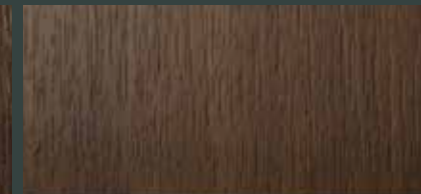
3



5150D8 I
American Walnut



5150NT E I
American Walnut



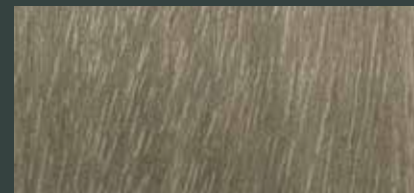
9001NT E I
Noce Orvieto



9001UN I
Noce Orvieto

LEGNO

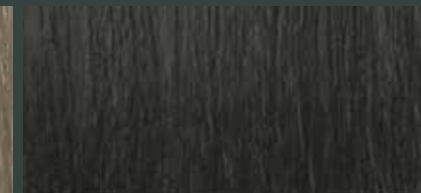
4



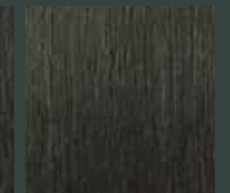
8845D8 I 6
Bleached Legno



8845NT E I 5 6
Bleached Legno



8848D8 I 6
Blacken Legno



8848NT E I 5 6
Blacken Legno

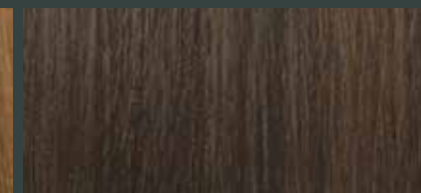
5



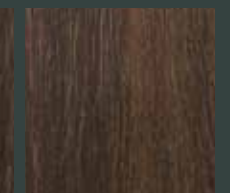
8846D8 I 6
Oiled Legno



8846NT E I 5 6
Oiled Legno



8847D8 I 6
Jarrah Legno



8847NT E I 5 6
Jarrah Legno

A

B

C

D



OAK



8902D8
White Painted Wood

0869NT
Powdered Oak

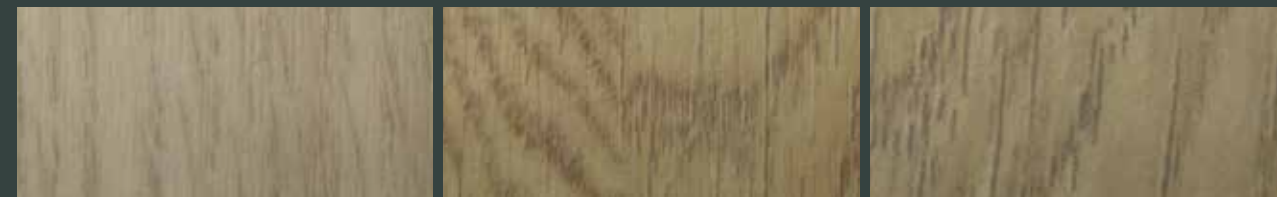
3737NT
Light Oak



9010NT
Colorado Oak

9010UN
Colorado Oak

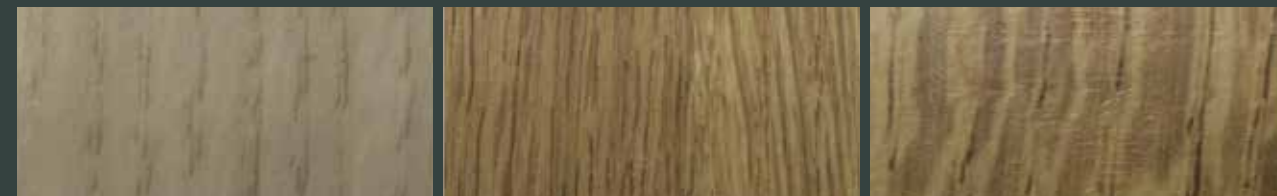
3737UN
Light Oak



1079NT
Natural Oak

0868NT
Beige Oak

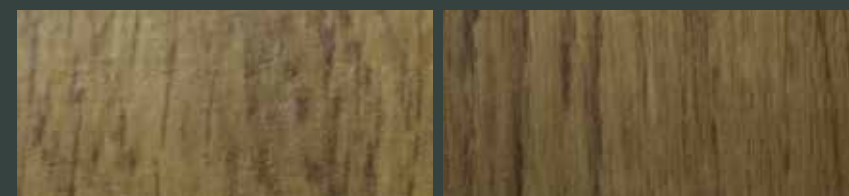
0868ST
Beige Oak



1079ST
Natural Oak

5478NT
Sand Oak

5478ST
Sand Oak



5887ST
Millennium Oak

5887NT
Millennium Oak

PARTIAL CROWN GRAIN

POWDERY OAK



8854NT
Alabaster Oak

8854D8
Alabaster Oak

8853NT
Rural Oak



8966D8
Delano Oak

8966NT
Delano Oak

8853D8
Rural Oak



8967NT
Logan Oak

8967D8
Logan Oak

PEAR



5488NT
Smoky Brown Pear

5489NT
Espresso Pear

5489UN
Espresso Pear

MAPLE & PINE



5485WB
Spice Maple

5485UN
Spice Maple

5485NT
Spice Maple

1541NT
Carbon Cedar

A

B

C

A

B

C

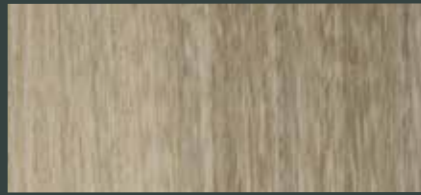
D



PARTIAL CROWN GRAIN & CHEVRON

ELM

1



6404D8
Bleached Elm



6404NT
Bleached Elm

2



6405D8
Bisque Elm



6405NT
Bisque Elm



6407D8
Honey Elm

3



6406D8
Mocha Elm



6406NT
Mocha Elm



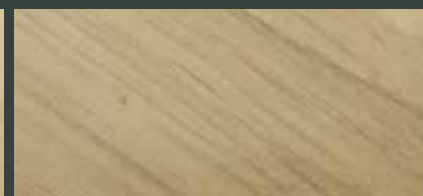
6407NT
Honey Elm

CHEVRON

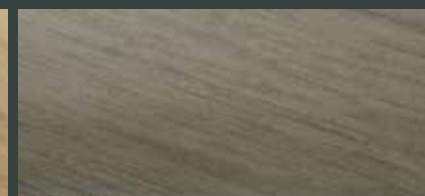
4



5524NM
Natural Chevron



5525NM
Dry Chevron



5526NM
Ash Chevron

FULL CROWN GRAIN

CLASSIC EXOTICS

5



6210NT
Couture Wood



6210UN
Couture Wood

A

B

C



FULL CROWN GRAIN

BIRCHPLY

1



6372NT
White Washed Birchply



8910NT
Raw Birchply



9228NG
Green Birchply



9229NG
Dark Sky Birchply

MAPLE

2



9222NT
Grayed Maple



8905NT
Waxed Maple



8906NT
Danish Maple

WASHED MAPLE

3



6441CK
Natural Washed Maple



6441ST
Natural Washed Maple



6442ST
Gray Washed Maple

KNOTTY ASH

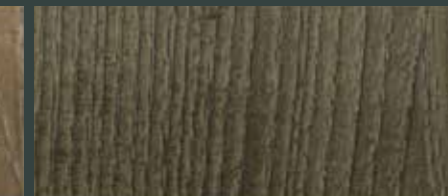
4



6439D8
Sanded Knotty Ash



6439CK
Sanded Knotty Ash



6437D8
Chalked Knotty Ash

A

B

C

D



Wood Grains

Edgeband available 4'x10' Available upon request

5' width Available upon request 6' width Available upon request

FULL CROWN GRAIN

PALE MAPLE



7672NT
Pale Maple



6321NT
Oxidized Maple

BEAMWOOD



6409NG
Artisan Beamwood



6409ST
Artisan Beamwood



6410NT
Weathered Beamwood

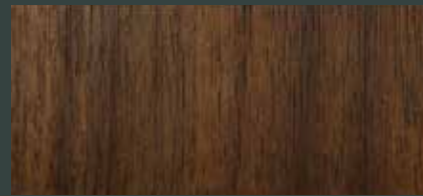


9484NG
Oxidized Beamwood



9484NT
Oxidized Beamwood

WALNUT



7188NT
Lincoln Walnut



7188UN
Lincoln Walnut



5997NT
Silent Walnut



6401NT
Natural Walnut



6402NT
Thermo Walnut



5997UN
Silent Walnut

A

B

C



CLASSICS



7182NT
Dunewood



7182UN
Dunewood



7395NT
Tassili



7566NT
Natural Maple



7566UN
Natural Maple



7395UN
Tassili



7012NT
Amber Maple



7012UN
Amber Maple



9966NT
Hill Top Maple



9966UN
Hill Top Maple



2567NT
Copper Beech New



2567UN
Copper Beech New



5904NT
Wild Cherry



5904UN
Wild Cherry



5364UN
Asia Wild Cherry



7759NT
Select Cherry



7759UN
Select Cherry

A

B

C

D



FULL CROWN GRAIN

OAK

1

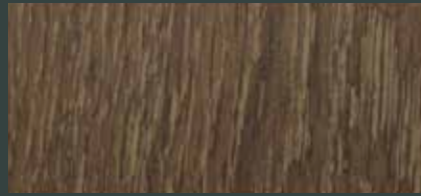


0369NT **I**
Vicuna Graceful Oak



0369UN **I**
Vicuna Graceful Oak

2



6052NT
Cottage Oak



6052ST
Cottage Oak



6053NT **E I**
Chalet Oak

PLANK

3



6206NG
Planked Deluxe Pear



9479NG **I**
Wide Planked Walnut



5523NG
Planked Decent Pear

4



6415HN **I**
Cast Formwood



6415CK
Cast Formwood



6415ST **6**
Cast Formwood

5



6362CK **E**
Concrete Formwood



6362ST **6**
Concrete Formwood



6477D8 **E I 6**
Seasoned Planked Elm



9480D8 **E I 6**
Salvage Planked Elm

A

B

C

D



HORIZONTAL GRAIN

HORIZONTAL ASH

1



8798C8
White Ash Cross



8799C8
Natural Ash Cross



8801C8
Aged Ash Cross



8800C8
Weathered Ash Cross

HORIZONTAL FIBERWOODS

2



8802C8
Weathered Fiberwood Cross



8804C8
Blackened Fiberwood Cross



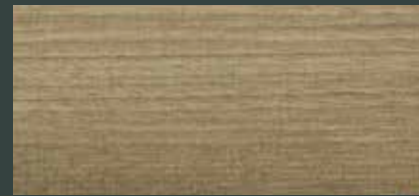
8803C8
Walnut Fiberwood Cross



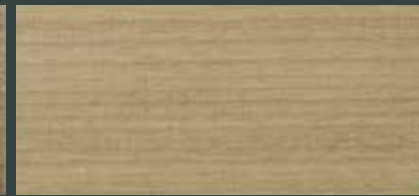
8805C8
Java Fiberwood Cross

HORIZONTAL WOOD

3



5261NT **I 5 6**
Sandy Sakura



5264NT **I 5 6**
Gracious Sakura

A

B

C

D





Solid Colours

E Edgeband available I 4'x10' Available upon request
5 5' width Available upon request 6 6' width Available upon request

Where workspaces become uplifting spaces



- ① 4973 Orange Felt P21
- ② 4971 Natural Gray Felt P21
- ③ 7384 Magenta P49
- ④ 4972 Yellow Felt P21
- ⑤ 7387 Quartet Chip P22
- ⑥ 2824 Blaze Red P49

MATTE™

VCARVE

MEGALITH



7384UN I
Magenta



0837VC
Graphite



1994MH
Fox



2824UN I
Blaze Red



2200VC
Dark Chocolate



0806MH
Battalion



8142UN I
Autumn

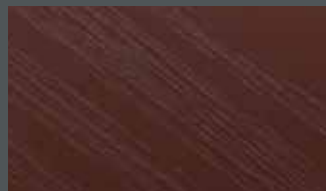


8142VC
Autumn

NUDE MATTE



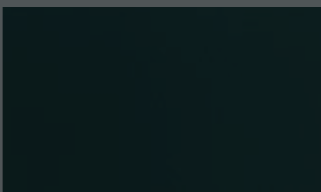
8140UN I
Brick



8140VC
Brick



7384NM
Magenta



8244UN I
Night Forest



8244VC
Night Forest



2824NM
Blaze Red

A

B

C

VCARVE texture is produced only in general purpose grade without post-forming application. Recommended for vertical application only.

Solid Colours

E Edgeband available **I** 4'x10' Available upon request

SOLID COLOUR IN MATTE™

1								1
	3200UN I 5 6 Ultra White	7949UN E 1 5 6 White	0459UN I 6 Brite White	7197UN I 6 Dover White	0933UN I 5 6 Mission White	1962UN I Magnolia	0932UN E 1 5 6 Antique White	
2								2
	2010UN I Malibu	0953UN I Ice White	1040UN E 1 5 Alpino	7918UN I 6 Neutral White	7460UN I 6 Ivory	1192UN I Porcelana	7463UN I Sail White	
3								3
	7938UN I Glacier	1093UN I Aries	7923UN I 5 6 Surf	7934UN I Pearl	7858UN I Pumice	0925UN I 5 6 Champagne	0958UN I 5 6 Beige	
4								4
	0464UN I 6 Graystone	0927UN E 1 5 6 Folkstone	7905UN I 5 6 Silver	7902UN I Platinum	7929UN I 6 Oyster Grey	7921UN E 1 6 Birch	0784UN I 6 Peruvian Clay	
5								5
	7880UN I 6 Thistle	0484UN I Steel	1994UN I Fox	0961UN I 6 Fog	2770UN I Sarum Grey	7928UN E 1 Mouse	1097UN I Citadel	
6								6
	0913UN I Indian Smoke	2020UN I Tornado	7912UN I 5 6 Storm	0806UN E 1 Battalon	5342UN I 6 Earth	0837UN I 6 Graphite	2200UN E 1 6 Dark Chocolate	
7								7
	5491UN E 1 6 Cameo Pink	8858UN I Just Rose	8823UN I 6 Patina	8244UN I Night Forest				
	A	B	C	D	E	F	G	

5 5' width Available upon request **6** 6' width Available upon request

SOLID COLOUR IN MATTE™

							1
2966UN E 1 Opal	8794UN I Enamel	3236UN I 5 6 Avocado	5341UN I Wasabi	4177UN I 6 Lime	6901UN E 1 Vibrant Green	8796UN I Algae	
							2
7879UN I 5 6 Dusty Jade	8793UN I Green Slate	7433UN I 6 Aqua Marina	5347UN I Maui	7846UN I Grotto	1336UN I 5 Marina	5521UN I Deep Sea	
							3
0024UN I 5 6 Saffron	2022UN I 6 Tenere	1485UN E 1 6 Chrome Yellow	8857UN I Just Gold	7940UN I 6 Spectrum Yellow	8142UN I Autumn	8140UN I Brick	
							4
3210UN I 6 Levante	7384UN I Magenta	2962UN I Clementine	2824UN I Blaze Red	1238UN I Carnaval	0845UN E 1 6 Spectrum Red	2046UN I Beaujolais	
							5
8238UN I 6 Blush	8233UN I 6 Violet Ash	8734UN I 6 Lavender Ash	6903UN I Cassis	0232UN I Juicy Pink	7026UN I Boysenberry	7966UN I New Burgundy	
							6
5494UN I 6 Aquamarine	1194UN E 1 6 Iris	8821UN I Just Blue	7884UN E 1 5 6 China Blue	0231UN I 6 Peaceful Blue	8822UN I Denim	7969UN E 1 Navy Blue	
							7
2299UN I 6 Grecian Blue	1871UN I 6 Monaco	4171UN I Electric	2828UN I 6 Tropical Blue	7851UN I Spectrum Blue	7914UN I Marine Blue	0909UN E 1 5 6 Black	
A	B	C	D	E	F	G	

Solid Colours

Edgeband available 4'x10' Available upon request

5' width Available upon request 6' width Available upon request

SOLID COLOUR IN NUDE MATTE

1					
	7929NM Oyster Grey	8238NM Blush	8233NM Violet Ash	8734NM Lavender Ash	
2					
	8794NM Enamel	8796NM Algae	8793NM Green Slate	7846NM Grotto	5521NM Deep Sea
3					
	8857NM Just Glod	2046NM Beaujolais	7928NM Mouse	0806NM Battalon	0837NM Graphite

SOLID COLOUR IN GLOSS

4						
	7949HG 1 5 6 White	0932HG 1 5 6 Antique White	0927HG 1 5 6 Folkstone	7851HG 1 Spectrum Blue	0909HG 1 5 6 Black	
5						
	7966HG 1 New Burgundy	0845HG 1 6 Spectrum Red	3210HG 1 6 Levante	1485HG 1 6 Chrome Yellow	4177HG 1 6 Lime	5347HG 1 Maui

SOLID COLOUR IN SCULPTED™

6							
	0933SP 5 6 Mission White	7949SP 5 6 White	0927SP 5 6 Folkstone	7912SP 5 6 Storm	0909SP 5 6 Black	5342SP 6 Earth	0845SP 6 Spectrum Red
	A	B	C	D	E	F	G

SOLID COLOUR IN WOOD TEXTURES

3200TW Ultra White	3200EG Ultra White	1040EG Alpino	5341EG Wasabi	8796EG Algae	0459PR Brite White
3200D8 1 6 Ultra White	0933ST 6 Mission White	0927ST 6 Folkstone	0933WB 6 Mission White	0806TW Battalon	7912PR Strom
0837D8 1 6 Graphite	0837ST 6 Graphite	0837WB 6 Graphite	0909D8 1 6 Black	0909WB Black	0806PR Battalon

SOLID COLOUR IN PRISMATIC

SOLID COLOUR IN LEATHER

3200L 1 Ultra White	0933L 1 Mission White	0958L 1 Beige	0913L 1 Indian Smoke	0784L 1 1 Peruvian Clay	5342L 1 1 Earth
0845L 1 Spectrum Red	7966L 1 New Burgundy	2200L 1 Dark Chocolate	0909L 1 Black		

SOLID COLOUR IN CHALK

7949CK White	8858CK Just Rose	8857CK Just Gold	5347CK Maui	8821CK Just Blue	0837CK Graphite	0909CK Black
A	B	C	D	E	F	G

Writable Surfaces

E Edgeband available 1 4'x10' Available upon request
5 5' width Available upon request 6 6' width Available upon request

HIGH GLOSS

1

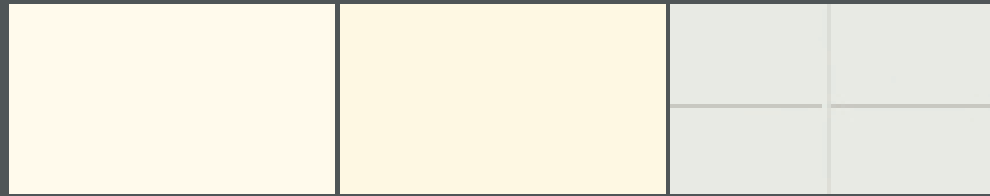


W 3200HG 1 5 6
Ultra White

W 7949HG 1 5 6
White

W 0927HG 1 5 6
Folkstone

2



W 0933HG 1 5 6
Mission White

W 0932HG 1 5 6
Antique White

W 9313HG 1
ImagiGrid

3



W 5347HG 1
Maui

W 4177HG 1 6
Lime

W 1485HG 1 6
Chrome Yellow

4



W 3210HG 1 6
Levante

W 0845G 1 6
Spectrum Red

W 7966HG 1
New Burgundy

5



W 7851HG 1
Spectrum Blue

W 0909HG 1 5 6
Black

A

B

C

The Retail



Where establishments become experiences



- | | | | |
|---|-------|--------------------------|-----|
| 1 | 7386 | Watercolor Glass | P22 |
| 2 | D2126 | Bronze Brushed Aluminium | P61 |
| 3 | 0459 | Brite White | P50 |
| 4 | DH147 | Diamond Bronzestone | P59 |

ColorCore[®] PROTEC+ & Magnetic Laminates

COLORCORE[®] PROTEC+

Available in 4'x10' only



MAGNETIC LAMINATES



*D8202 Grid-point Gloss Whiteboard:

As the distance between each dot is 5cm, the grid-point on D8202 might not be visible from the sample chip in this folder.

Please request for a bigger sample before purchase.

MAINTENANCE GUIDE:

PRE-CLEANING

- The surfaces are protected with a removable film.
- It is strongly recommended to clean the surface before using the board for the first time to remove any possible residues of the film.
- A conventional spirit (ethyl alcohol) can be used for pre-cleaning.
- Never use detergents to clean the surface because they usually contain fatty substances for protecting the skin.

BOARD MAKERS

- Marker pen must be stored horizontally so that the ink and solvent are kept mixed.
- Do not leave marker on the surface for more than 30 days.
- Never use permanent marker or sketch marker or any tools which contain fat substances.

AFTER-USE CLEANING

- The whiteboard duster should be a soft dry surface. A microfiber cloth is recommended.
- Avoid heavy rubbing of the surface with dry cloth. Sponges should not be used.
- The quality of the board markers used has a decisive effect on the cleaning result.
- For better maintenance, clean the surface weekly with a wet cloth.

Some items are not recommended for use as markerboard. Please check with Formica sales representatives before purchase.

A B C D E F



*D8278 Moon Brass, *D8279 Dimond Antique Brass and *DH091 Copper Brass Antique

There is a width limitation in design due to the nature of the raw brass foil material. Therefore, for these 3 items, there will be a joint line design effect in the middle of the 4'x8' size full sheet. For full sheet design, please refer to Formica website www.formica.com

1



D8288 1.3 mm
Crossline Polished Natural



D8291 1.3 mm
Crossline Polished Smokey Grey



D8289 1.3 mm
Crossline Polished Goldtone



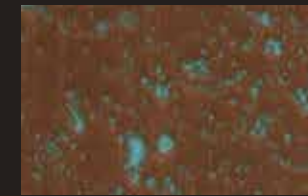
D8292 1.3 mm
Crossline Polished Coppertone



D8290 1.3 mm
Crossline Polished Teatone



D8277 1.3 mm
Moon Light Copper



D8275 1.3 mm
Moon Turquoise Copper

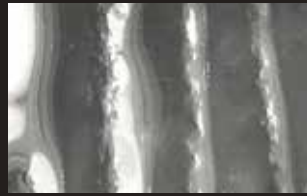


D8276 1.3 mm
Moon Dark Copper



***D8278** 1.3 mm
Moon Brass

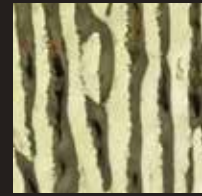
2



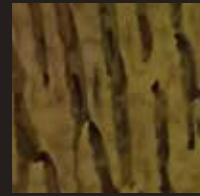
D8281 1.3 mm
Cascade Natural



D8284 1.3 mm
Cascade Smokey Grey



D8282 1.3 mm
Cascade Goldtone



D8283 1.3 mm
Cascade Teatone



D8285 1.3 mm
Cascade Coppertone



***DH091** 1.0 mm
Copper Brass Antique



D4691 1.3 mm
Copper Stratos Diagonal



D1999 1.3 mm
Copper Antique



D8021 1.3 mm
Light Hammer Copper Antiqued

3



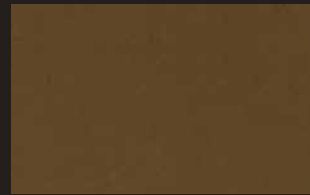
DH035 1.0 mm
Cross-Brushed Natural



DH036 1.0 mm
Cross-Brushed Goldtone



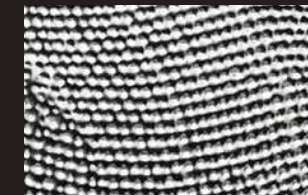
DH008 1.0 mm
Mirror Coppertone



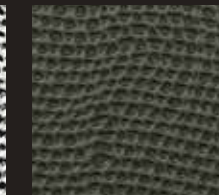
DH123 1.0 mm
Mirror Teatone



DH142 1.3 mm
Goldtone Polished Mesh



DH140 1.3 mm
Natural Polished Mesh



DH148 1.3 mm
Vintage Mesh



D4941 1.3 mm
Champagne Mesh



DH039 1.3 mm
Anthracite Mesh

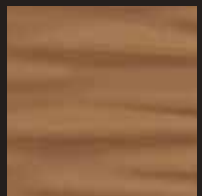
4



D8286 1.3 mm
Cella Polished Natural



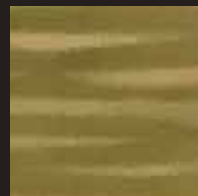
D8266 1.3 mm
Cella Polished Smokey Grey



D8265 1.3 mm
Cella Polished Coppertone



D8287 1.3 mm
Cella Polished Goldtone



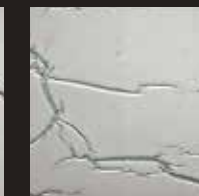
D4751 1.3 mm
Cella Polished Teatone



D8272 1.0 mm
Crisp Rose



D8270 1.0 mm
Crisp Anthracite



D8271 1.0 mm
Crisp Oxygen



D8269 1.0 mm
Crisp Gold

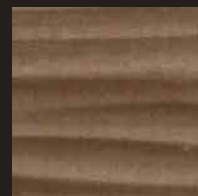


D8274 1.3 mm
Crisp Antique Copper

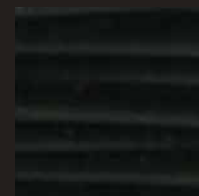
5



D4939 1.3 mm
Cella Goldtone



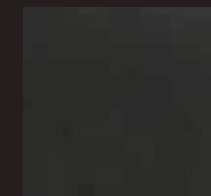
DH003 1.3 mm
Cella Coppertone



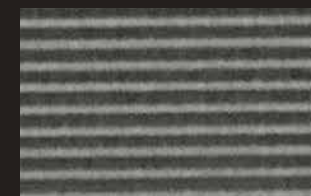
DH004 1.3 mm
Cella Black



DH094 1.0 mm
Satin Steeltone



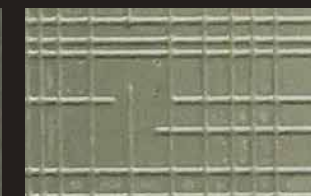
DH007 1.0 mm
Matte Gunmetal



D4740 0.9 mm
Horizontal Corrugated Steeltone



DH187 0.9 mm
Vertical Corrugated Steeltone



DH014 1.3 mm
Matrix Champagne



DH020 1.3 mm
Footplate Steeltone

6



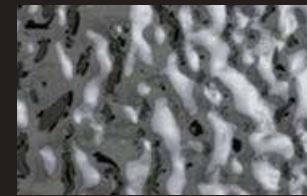
DH141 1.3 mm
Lava Natural



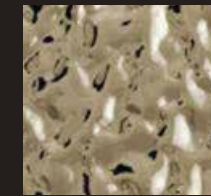
DH089 1.3 mm
Lava Coppertone



DH144 1.3 mm
Lava Teatone



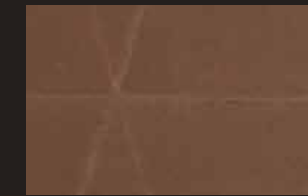
D5474 1.3 mm
Lava Smokey Grey



D5471 1.3 mm
Lava Goldtone



***D8279** 1.3 mm
Diamond Antique Brass



D8280 1.3 mm
Diamond Antique Copper



DH147 1.0 mm
Diamond Bronzestone

A

B

C

D

E

A

B

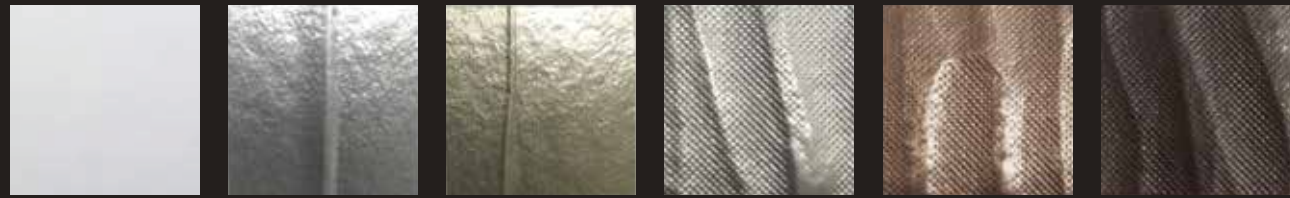
C

D

E

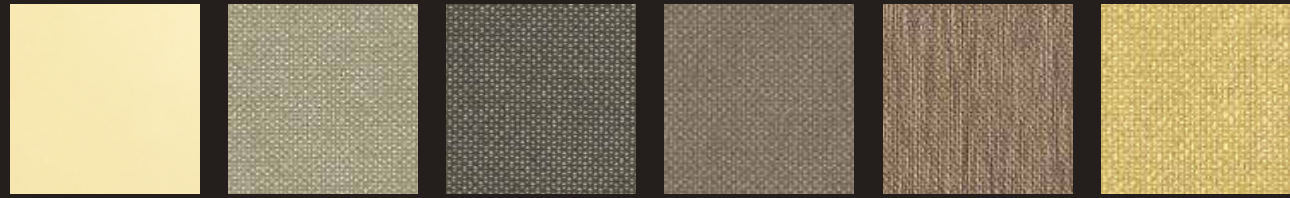


1



D1990 1.0 mm Polished Black
D2806 1.3 mm Lounge Steeltone
D2805 1.3 mm Lounge Bronzestone
D6484 1.3 mm Craft Argent
D6483 1.3 mm Craft Bronzestone
D6485 1.3 mm Craft Umbra

2



D8004 1.0 mm Polished Gold Aluminium
D5306 1.0 mm Plex Argent
D5310 1.0 mm Plex Graphite
D5307 1.0 mm Plex Umbra
D6486 1.0 mm Plex Bronzestone
D5309 1.0 mm Plex Gold

3



D8017 0.9 mm Horizontal Corrugated Matte Anthracite
D4899 1.3 mm Bronze Mesh
D5392 1.3 mm Copper Veil
D2113 1.3 mm Copper Maple Leaves
DH105 1.3 mm Dots Steeltone
DH098 1.3 mm Dots Reverse

4



D8032 0.9 mm Vertical Corrugated Matte Aluminium
D8034 1.3 mm Aluminium Mesh
D5391 1.3 mm Graphite Veil
D8023 1.0 mm Aluminium Crush
D8025 1.3 mm Copper Crush
D8030 1.3 mm Copper Plain Crush Stipple

5



D2042 1.0 mm Brushed Goldtone
DH137 1.0 mm Brushed Champagne
DH139 1.0 mm Brushed Rosegold
DH038 1.0 mm Brushed Graphite
DH005 1.0 mm Brushed Bronzestone

6

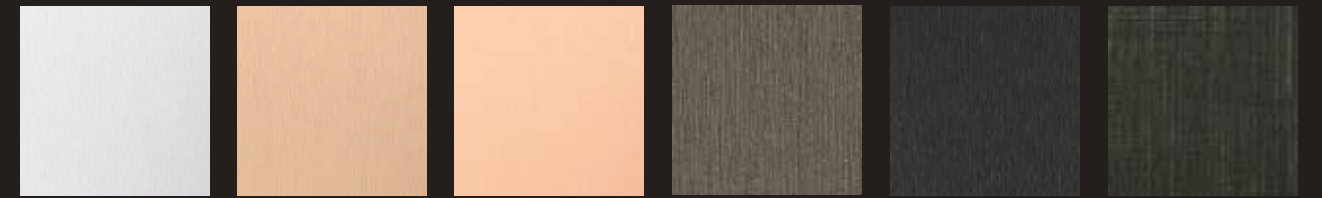


D8003 1.0 mm Mirror Aluminium
D2006 1.0 mm Matte Bronze Aluminium New
D2802 1.0 mm Dimpled Goldtone
D2807 1.0 mm Dimpled Bronzestone
DH018 1.0 mm Dimpled Anthracite

A B C D E F A B C D E F



1



D2032 1.0 mm Brushed Pewter
D2126 1.0 mm Bronze Brushed Aluminium
D2052 1.0 mm Brushed Copper Aluminium
D5312 1.0 mm Brushed Umbra
D8105 1.0 mm Aluminium Brushed Black
D8040 1.0 mm Cross-Brushed Brownish Grey

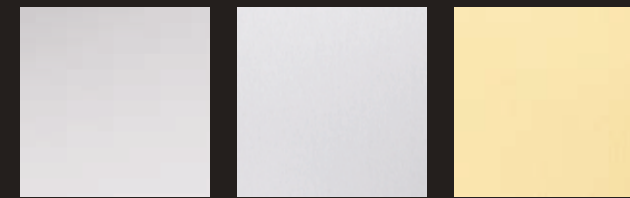
2



D2022 1.0 mm Brushed Aluminium
D4249 1.0 mm Aluminium Longline
D2178 0.8 mm Brushed Stainless Steel
DH138 1.0 mm Bronzestone Longline
D8103 1.0 mm Champagne Longline

3

CLASSIC DECOMETAL®



D8122 0.7 mm Anodised Aluminium
D8124 0.7 mm Silver Brush
D8123 0.7 mm Gold Brush

Custom Graphics™ PROTEC+



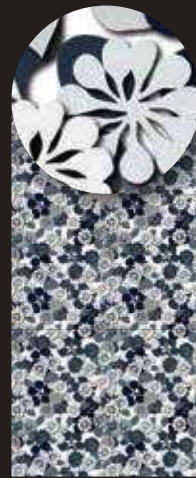
N675
Shadowtree Noon



N652
Shadowtree Night



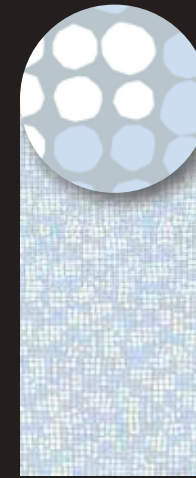
N695
Cantata Blue



N795
Secret Garden



N683
Butterflies



N799
Cut Circles Blue



N800
Cut Circles Pink



N737
Cut Circles Brown



N738
Cut Circles Green



N665
Lure Orange



N793
Nature Play



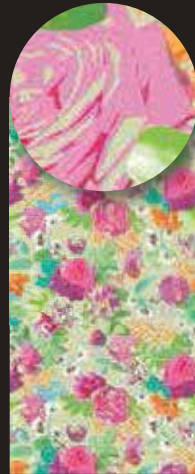
N693
Jungle Fever



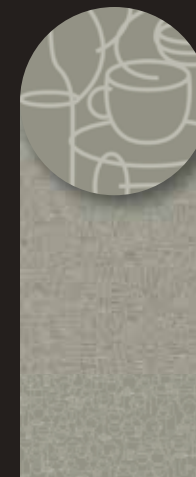
N736
Tattoo Fish Red



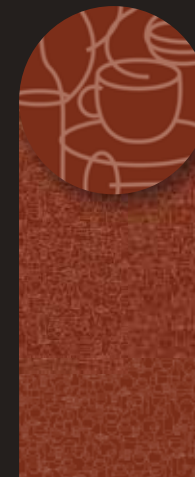
N796
Succulent



N562
Hothouse



N802
Entertaining Grey



N680
Entertaining Brown



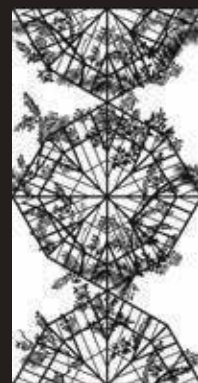
N681
Entertaining Blue



N754
Digi Game



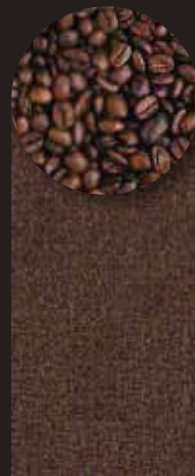
N676
Coral Sea Red



N794
Silhouette



N803
Cafe Face Brown



N804
Coffee Beans



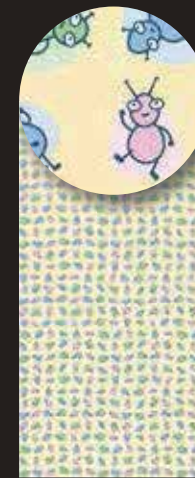
N797
Carbon Lace



N798
White Stone



N790
Numeric



N672
Alien Yellow



N807
Alien Blue



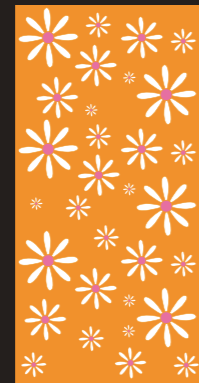
N673
Alien Cream



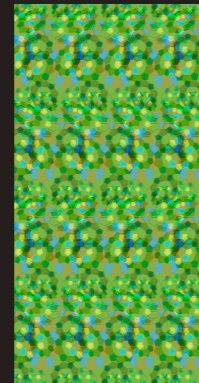
N791
Sudsy Blue



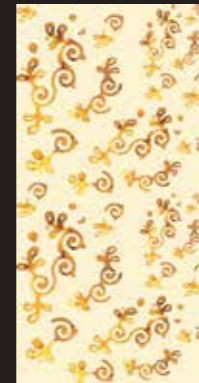
N284
Hip Retro 1



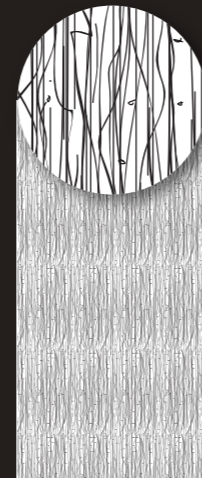
N478
Flower 2



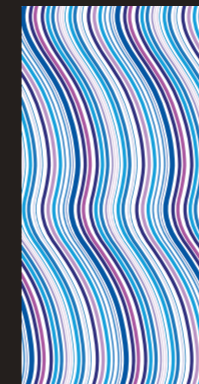
N282
Party 3



N394
Golden Autumn



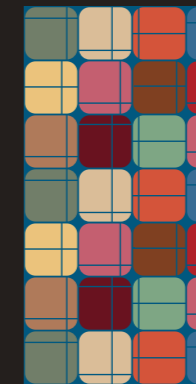
N277
Straw 3



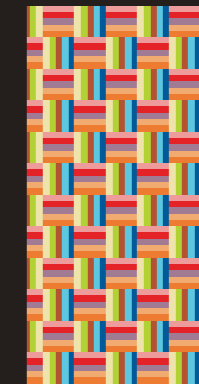
N612
Ocean Wave



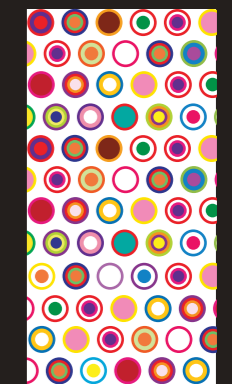
N447
Rainbow Wave



N808
Rounded Square Color



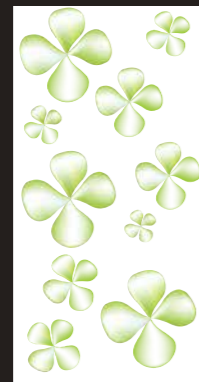
N733
Color Weaver



N662
Circle Varsity



N525
Carnival



N404
Bloom 3



N495
Clover



N428
Book Shelf



N437
Brahma Flower



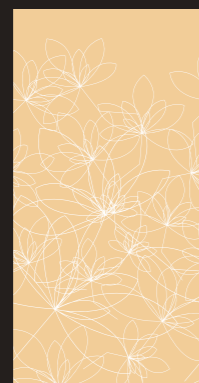
N690
Bookshelf Color



N783
Close Bay



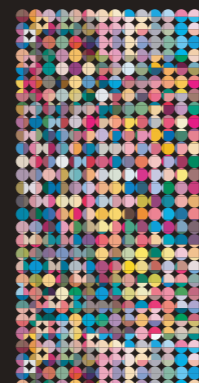
N418
Blue Lily



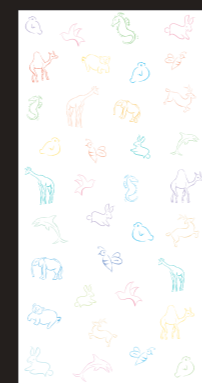
N407
Pure Lily



N364
Loop In Scarlet



N409
Colorful



N490
Baby



N684
Great Barrier Reef



N685
Melb Gully



Epilogue

Turn possibilities into realities.

As the future turns urban,
the demand for flexibility
of space is paramount.

Imagine a new way to live
more, with less – among
our own, among nature,
among technology.

To live flexibly, to be adaptive.
It's your turn to create an
inspiring reality.

Index

Code	Description	Edgeband	Page	Ref	Code	Description	Edgeband	Page	Ref
0024UN	Saffron		51	A3	1079ST	Natural Oak		38	A4
0231UN	Peaceful Blue		51	E6	1093UN	Aries		50	B3
0232UN	Juicy Pink		51	E5	1097UN	Citadel		50	G5
0338NT	Blackened Linewood		32	D4	1192UN	Porcelana		50	F2
0369NT	Vicuna Graceful Oak		44	A1	1194UN	Iris	DE1194UN	51	B6
0369UN	Vicuna Graceful Oak		44	B1	1238UN	Carnaval		51	E4
0459PR	Brite White		53	G1	1336UN	Marina		51	F2
0459UN	Brite White		50	C1	1485HG	Chrome Yellow		52	D5
0464UN	Graystone		50	A4	1485UN	Chrome Yellow	DE1485UN	51	C3
0484UN	Steel		50	B5	1541NT	Carbon Cedar		39	D5
0784L	Peruvian Clay	DE0784L	53	E4	1871UN	Monaco		51	B7
0784UN	Peruvian Clay		50	G4	1962UN	Magnolia		50	F1
0806MH	Battalon		49	C2	1994MH	Fox		49	C1
0806NM	Battalon		52	D3	1994UN	Fox		50	C5
0806PR	Battalon		53	G3	2010UN	Malibu		50	A2
0806TW	Battalon		53	E2	2020UN	Tornado		50	B6
0806UN	Battalon	DE0806UN	50	D6	2022UN	Tenere		51	B3
0812D8	Cinnamon Ash		32	B3	2046NM	Beaujolais		52	B3
0812NT	Cinnamon Ash	DE0812NT	32	D3	2046UN	Beaujolais		51	G4
0813NT	Cuban Wood	DE0813NT	36	C4	2200L	Dark Chocolate		53	C5
0837CK	Graphite		53	F6	2200UN	Dark Chocolate	DE2200UN	50	G6
0837D8	Graphite		53	A3	2200VC	Dark Chocolate		49	B2
0837NM	Graphite		52	E3	2299UN	Grecian Blue		51	A7
0837ST	Graphite		53	B3	2567NT	Copper Beech New	DE2567NT	43	A4
0837UN	Graphite		50	F6	2567UN	Copper Beech New		43	B4
0837VC	Graphite		49	B1	2726NT	Natural Beech	DE2726NT	33	A1
0837WB	Graphite		53	C3	2726UN	Natural Beech		33	B1
0845HG	Spectrum Red		52	B5	2770UN	Sarum Grey		50	E5
0845L	Spectrum Red		53	A5	2824NM	Blaze Red		49	C5
0845SP	Spectrum Red		52	G6	2824UN	Blaze Red		49	A2
0845UN	Spectrum Red	DE0845UN	51	F4	2824UN	Blaze Red		51	D4
0860NT	Blond Afromosia	DE0860NT	32	A2	2828UN	Tropical Blue		51	D7
0861NT	Olive Afromosia	DE0861NT	32	B2	2962UN	Clementine		51	C4
0862NT	Cherry Afromosia		32	D2	2966UN	Opal	DE2966UN	51	A1
0867NT	Sand Cherry	DE0867NT	36	B1	3200D8	Ultra White		53	A2
0868NT	Beige Oak	DE0868NT	38	B3	3200EG	Ultra White		53	B1
0868ST	Beige Oak		38	C3	3200L	Ultra White		53	A4
0869NT	Powdered Oak	DE0869NT	38	B1	3200TW	Ultra White		53	A1
0870NT	Dawn Cherry		36	A1	3200UN	Ultra White		50	A1
0874NT	Hazelnut Cherry		36	C1	3210HG	Levante		52	C5
0909CK	Black		53	G6	3210UN	Levante		51	A4
0909D8	Black		53	D3	3236UN	Avocado		51	C1
0909HG	Black		52	E4	3421HG	Bianca Luna		26	C2
0909L	Black		53	D5	3458HN	Travertine Silver	DE3458HN	26	A2
0909SP	Black		52	E6	3460HG	Calacatta Marble	DE3460HG	26	A3
0909UN	Black	DE0909UN	51	G7	3476HN	Jet Sequoia	DE3476HN	26	C5
0909WB	Black		53	E3	3505CK	Storm Solidz		24	C3
0913L	Indian Smoke		53	D4	3505EG	Storm Solidz		24	D3
0913UN	Indian Smoke		50	A6	3737NT	Light Oak		38	C1
0925UN	Champagne		50	F3	3737UN	Light Oak		38	C2
0927HG	Folkstone		52	C4	4171UN	Electric		51	C7
0927SP	Folkstone		52	C6	4177HG	Lime		52	E5
0927ST	Folkstone		53	C2	4177UN	Lime		51	E1
0927UN	Folkstone	DE0927UN	50	B4	4971PA	Natural Gray Felt		21	B2
0932HG	Antique White		52	B4	4972PA	Yellow Felt		21	A1
0932UN	Antique White	DE0932UN	50	G1	4973PA	Orange Felt		21	B1
0933L	Mission White		53	B4	4974PA	Green Felt		21	A2
0933SP	Mission White		52	A6	5017NM	Watercolor Steel		22	B1
0933ST	Mission White		53	B2	5018NM	Calacatta Cava		25	B1
0933UN	Mission White		50	E1	5018VC	Calacatta Cava		25	A1
0933WB	Mission White		53	D2	5150D8	American Walnut		37	A3
0953UN	Ice White		50	B2	5150NT	American Walnut	DE5150NT	37	B3
0958L	Beige		53	C4	5261NT	Sandy Sakura		45	A3
0958UN	Beige		50	G3	5264NT	Gracious Sakura		45	B3
0961UN	Fog		50	D5	5341EG	Wasabi		53	D1
1040EG	Alpino		53	C1	5341UN	Wasabi		51	D1
1040UN	Alpino	DE1040UN	50	C2	5342L	Earth	DE5342L	53	F4
1079NT	Natural Oak	DE1079NT	38	A3	5342SP	Earth		52	F6

Index

Code	Description	Edgeband	Page	Ref
5342UN	Earth		50	E6
5347CK	Maui		53	D6
5347HG	Maui		52	F5
5347UN	Maui		51	D2
5364UN	Asia Wild Cherry		43	A5
5478NT	Sand Oak	DE5478NT	38	B4
5478ST	Sand Oak		38	C4
5483NT	Mocca Firwood	DE5483NT	32	A4
5483UN	Mocca Firwood		32	B4
5483WB	Mocca Firwood		32	C4
5485NT	Spice Maple	DE5485NT	39	C5
5485UN	Spice Maple		39	B5
5485WB	Spice Maple		39	A5
5486NT	Classic Walnut	DE5486NT	37	A1
5486UN	Classic Walnut		37	B1
5487NT	Oiled Walnut	DE5487NT	37	A2
5487UN	Oiled Walnut		37	B2
5488NT	Smoky Brown Pear	DE5488NT	39	A4
5489NT	Espresso Pear		39	C4
5489UN	Espresso Pear		39	D4
5491UN	Cameo Pink	DE5491UN	50	A7
5494UN	Aquamarine		51	A6
5521NM	Deep Sea		52	E2
5521UN	Deep Sea		51	G2
5523NG	Planked Decent Pear		44	D3
5524NM	Natural Chevron		40	A4
5525NM	Dry Chevron		40	B4
5526NM	Ash Chevron		40	C4
5527LM	Energy Cotton		23	B5
5528LM	Energy Lemon		23	D5
5875LM	Neutral Weft		23	A1
5883NT	Pecan Woodline		33	A4
5887NT	Millennium Oak		38	B5
5887ST	Millennium Oak		38	A5
5904NT	Wild Cherry	DE5904NT	43	C4
5904UN	Wild Cherry		43	D4
5997NT	Silent Walnut	DE5997NT	42	C4
5997UN	Silent Walnut		42	C5
6052NT	Cottage Oak		44	A2
6052ST	Cottage Oak		44	B2
6053NT	Chalet Oak	DE6053NT	44	D2
6055D8	Aged Walnut		37	C2
6055NT	Aged Walnut	DE6055NT	37	D2
6206NG	Planked Deluxe Pear		44	A3
6210NT	Couture Wood	DE6210NT	40	A5
6210UN	Couture Wood		40	B5
6212NT	Wheat Strand	DE6212NT	35	B1
6317HN	Weathered Cement	DE6317HN	26	A4
6321NT	Oxidized Maple	DE6321NT	42	B1
6362CK	Concrete Formwood	DE6362CK	44	A5
6362ST	Concrete Formwood		44	B5
6363HN	Elemental Ash	DE6363HN	26	C1
6372NT	White Washed Birchply	DE6372NT	41	A1
6401NT	Natural Walnut	DE6401NT	42	A5
6402NT	Thermo Walnut	DE6402NT	42	B5
6404D8	Bleached Elm		40	A1
6404NT	Bleached Elm	DE6404NT	40	B1
6405D8	Bisque Elm		40	A2
6405NT	Bisque Elm	DE6405NT	40	B2
6406D8	Mocha Elm		40	A3
6406NT	Mocha Elm	DE6406NT	40	B3
6407D8	Honey Elm		40	C2
6407NT	Honey Elm	DE6407NT	40	C3
6409NG	Artisan Beamwood		42	A2
6409ST	Artisan Beamwood		42	B2
6410NT	Weathered Beamwood	DE6410NT	42	C2
6412NG	Oak Riftwood		33	D2
6415CK	Cast Formwood		44	B4

Code	Description	Edgeband	Page	Ref
6415HN	Cast Formwood		44	A4
6415ST	Cast Formwood		44	D4
6437D8	Chalked Knotty Ash	DE6437D8	41	D4
6439CK	Sanded Knotty Ash		41	B4
6439D8	Sanded Knotty Ash		41	A4
6441CK	Natural Washed Maple	DE6441CK	41	A3
6441ST	Natural Washed Maple		41	B3
6442ST	Gray Washed Maple		41	D3
6444LM	Clay Textile		23	B1
6445LM	Greige Textile	DE6445LM	23	C1
6446LM	Charcoal Textile	DE6446LM	23	D1
6477D8	Seasoned Planked Elm	DE6477D8	44	C5
6901UN	Vibrant Green	DE6901UN	51	F1
6903UN	Cassis		51	D5
6930NT	Natural Cane	DE6930NT	35	C4
7012NT	Amber Maple	DE7012NT	43	A3
7012UN	Amber Maple		43	B3
7026UN	Boysenberry		51	F5
7157EG	Cosmic Dawn		17	B3
7157HG	Cosmic Dawn		17	A3
7157SD	Cosmic Dawn		18	A4
7157SP	Cosmic Dawn		17	C4
7157TW	Cosmic Dawn		17	C3
7157UN	Cosmic Dawn		18	A2
7158HG	Cosmic Dusk		17	A4
7158SD	Cosmic Dusk		18	B4
7158UN	Cosmic Dusk		18	B3
7168UN	Metal Pearl Silver		18	B2
7170SP	Metal Pearl Rosewood		17	A5
7170UN	Metal Pearl Rosewood		18	C3
7171EG	Metal Pearl Steel		17	B4
7171SD	Metal Pearl Steel		18	C4
7171UN	Metal Pearl Steel		18	A3
7182NT	Dunewood	DE7182NT	43	A1
7182UN	Dunewood		43	B1
7188NT	Lincoln Walnut		42	A4
7188UN	Lincoln Walnut		42	B4
7197UN	Dover White		50	D1
7377HG	White Jade		13	B1
7377MH	White Jade		13	A1
7378HG	Silver Jade		14	B1
7378MH	Silver Jade		14	A1
7379HG	Copper Stone		16	B2
7379MH	Copper Stone		16	A2
7380HG	Gold Stone		16	B1
7380MH	Gold Stone		16	A1
7381HG	Blue Gem		14	B2
7381MH	Blue Gem		14	A2
7382HG	Bronze Desert		15	B1
7382MH	Bronze Desert		15	A1
7383HG	Steel Jade		13	B2
7383MH	Steel Jade		13	A2
7384NM	Magenta		49	C4
7384UN	Magenta		49	A1
7384UN	Magenta		51	B4
7386NM	Watercolor Glass		22	A1
7387NM	Quartet Chip		22	A2
7388D8	Scraped Wood		29	A2
7389NT	Select Tan Oak		31	A2
7391NT	Select Burnt Oak		31	B2
7392NT	Select Dry Oak		31	A1
7393NT	Select Fawn Oak		31	B1
7394NG	Planked Drift Oak		30	A1
7395NT	Tassili	DE7395NT	43	D1
7395UN	Tassili		43	D2
7398D8	Comfort Gray Cherry		29	B1
7399D8	Bianco Cherry		29	A1
7402NM	Pietra Grafite		26	B1

Code	Description	Edgeband	Page	Ref
7403NM	Nero Marquina		26	B5
7408NM	Ice Onyx		26	A1
7412NG	Planked Raw Oak		30	B1
7433UN	Aqua Marina		51	C2
7460UN	Ivory		50	E2
7463UN	Sail White		50	G2
7566NT	Natural Maple	DE7566NT	43	A2
7566UN	Natural Maple		43	B2
7672NT	Pale Maple	DE7672NT	42	A1
7759NT	Select Cherry	DE7759NT	43	B5
7759UN	Select Cherry		43	D5
7846NM	Grotto		52	D2
7846UN	Grotto		51	E2
7851HG	Spectrum Blue		52	D4
7851UN	Spectrum Blue		51	E7
7858UN	Pumice		50	E3
7879UN	Dusty Jade		51	A2
7880UN	Thistle		50	A5
7884UN	China Blue	DE7884UN	51	D6
7902UN	Platinum		50	D4
7905UN	Silver		50	C4
7912PR	Storm		53	G2
7912SP	Storm		52	D6
7912UN	Storm		50	C6
7914UN	Marine Blue		51	F7
7918UN	Neutral White		50	D2
7921UN	Birch	DE7921UN	50	F4
7923UN	Surf		50	C3
7928NM	Mouse		52	C3
7928UN	Mouse	DE7928UN	50	F5
7929NM	Oyster Grey		52	A1
7929UN	Oyster Grey		50	E4
7934UN	Pearl		50	D3
7938UN	Glacier		50	A3
7940UN	Spectrum Yellow		51	E3
7949CK	White		53	A6
7949HG	White		52	A4
7949SP	White		52	B6
7949UN	White	DE7949UN	50	B1
7966HG	New Burgundy		52	A5
7966L	New Burgundy		53	B5
7966UN	New Burgundy		51	G5
7969UN	Navy Blue	DE7969UN	51	G6
8006NT	Avignon Walnut	DE8006NT	32	A3
8140UN	Brick		49	A4
8140UN	Brick		51	G3
8140VC	Brick		49	B4
8142UN	Autumn		49	A3
8142UN	Autumn		51	F3
8142VC	Autumn		49	B3
8233NM	Violet Ash		52	C1
8233UN	Violet Ash		51	B5
8238NM	Blush		52	B1
8238UN	Blush		51	A5
8244UN	Night Forest		49	A5
8244UN	Night Forest		50	D7
8244VC	Night Forest		49	B5
8387NM	Black Chip		22	B2
8571NM	Twilight Shade		18	B1
8574NM	Twilight Bronze		18	A1
8577NT	Fjord Elm		32	A1
8578NT	Sund Elm		32	B1
8734NM	Lavender Ash		52	D1
8734UN	Lavender Ash		51	C5
8793NM	Green Slate		52	C2
8793UN	Green Slate		51	B2
8794NM	Enamel		52	A2
8794UN	Enamel		51	B1

Code	Description	Edgeband	Page	Ref
8796EG	Algae		53	E1
8796NM	Algae		52	B2
8796UN	Algae		51	G1
8798C8	White Ash Cross		45	A1
8799C8	Natural Ash Cross		45	B1
8800C8	Weathered Ash Cross		45	D1
8801C8	Aged Ash Cross		45	C1
8802C8	Weathered Fiberwood Cross		45	A2
8803C8	Walnut Fiberwood Cross		45	C2
8804C8	Blackened Fiberwood Cross		45	B2
8805C8	Java Fiberwood Cross		45	D2
8812CK	Tinted Paper Terrazzo		24	A2
8816SD	Frosted Champagne		18	B5
8816SP	Frosted Champagne		17	B5
8818SD	Frosted Graphite		18	A5
8819SD	Frosted Black		18	C5
8819SP	Frosted Black		17	C5
8821CK	Just Blue		53	E6
8821UN	Just Blue		51	C6
8822UN	Denim		51	F6
8823UN	Patina		50	C7
8826JN	Neutral Twill		23	A2
8826LM	Neutral Twill		23	B2
8828LM	Earthen Twill		23	D2
8830HN	Elemental Concrete	DE8830HN	26	C3
8832HN	Elemental Corten		26	A6
8834NT	Smoke Strand		35	A1
8836NT	Mocha Strand		35	C1
8841D8	White Ash	DE8841D8	36	A5
8842D8	Weathered Ash		36	A4
8842NT	Weathered Ash	DE8842NT	36	B4
8843D8	Natural Ash		36	A2
8843NT	Natural Ash	DE8843NT	36	B2
8843WB	Natural Ash		36	C2
8844D8	Aged Ash		36	A3
8844NT	Aged Ash	DE8844NT	36	B3
8844WB	Aged Ash		36	C3
8845D8	Bleached Legno		37	A4
8845NT	Bleached Legno	DE8845NT	37	B4
8846D8	Oiled Legno		37	A5
8846NT	Oiled Legno	DE8846NT	37	B5
8847D8	Jarrah Legno		37	C5
8847NT	Jarrah Legno	DE8847NT	37	D5
8848D8	Blacken Legno		37	C4
8848NT	Blacken Legno	DE8848NT	37	D4
8849NT	Natural Teak	DE8849NT	34	A1
8849ST	Natural Teak		34	B1
8853D8	Rural Oak		39	D2
8853NT	Rural Oak	DE8853NT	39	D1
8854D8	Alabaster Oak		39	C1
8854NT	Alabaster Oak	DE8854NT	39	A1
8857CK	Just Gold		53	C6
8857NM	Just Gold		52	A3
8857UN	Just Gold		51	D3
8858CK	Just Rose		53	B6
8858UN	Just Rose		50	B7
8860NT	Weathered Teak		34	A3
8902D8	White Painted Wood	DE8902D8	38	A1
8905NT	Waxed Maple	DE8905NT	41	B2
8906NT	Danish Maple	DE8906NT	41	D2
8910NT	Raw Birchply	DE8910NT	41	B1
8913NT	Oak Fiberwood	DE8913NT	33	C5
8914D8	Weathered Fiberwood	DE8914D8	33	A5
8915D8	Walnut Fiberwood	DE8915D8	33	D5
8916D8	Blackened Fiberwood	DE8916D8	33	B5
8917D8	Java Fiberwood		33	E5
8966D8	Delano Oak		39	A2
8966NT	Delano Oak		39	C2

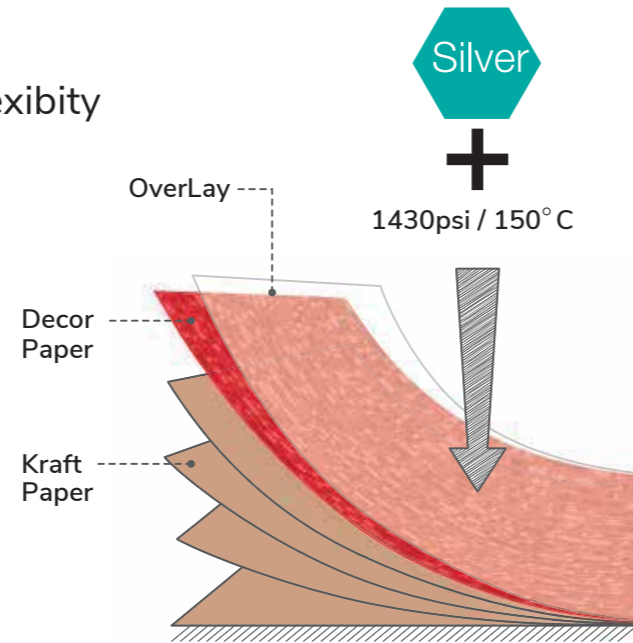
PRODUCT PROPERTIES

For durability, colour clarity and flexibility

Formica® High Pressure Laminates (HPL) are made from specially selected kraft and printed papers impregnated with thermosetting synthetic resins and fused together under heat and high-pressure in a controlled environment to form single high-density sheets of laminates.

HPL Surfaces

The surface patterns and colours on the laminates are impregnated with melamine-based resins to provide higher resistance against abrasion, shock and impact, heat, and discolouration. Select from our comprehensive range of sheet size and an even wider range of textures and finishes.

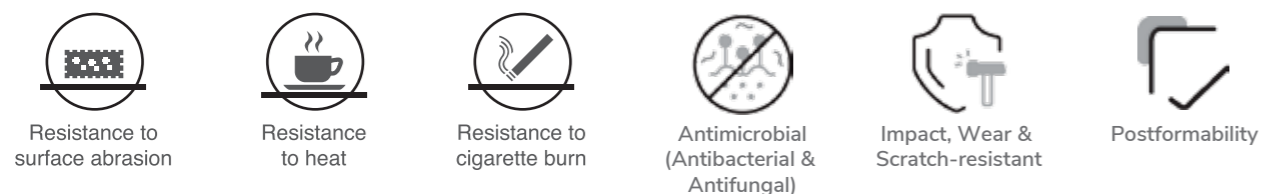


HPL Grades

All Formica® High Pressure Laminates are manufactured to the requirements of EN 438 and ISO 4586 and are available in many grades, each of which with specific properties. The two most commonly applied grades are General Purpose and Post-Forming :

Grade	Performance	Typical Application
General Purpose	<ul style="list-style-type: none"> Vertical applications and horizontal applications with moderate wear General use 	<ul style="list-style-type: none"> Retail and hospitality furniture Worktops and counter tops Doors Kitchen cabinets Wardrobes Office furniture Interior walls in general transport vehicles
Post-Forming	<ul style="list-style-type: none"> Vertical applications and horizontal applications with moderate wear Can be formed with controlled temperature and bending 	<p>Where curved section are required :</p> <ul style="list-style-type: none"> Kitchen cabinets doors Worktops and counter tops Wall-cladding Shelves Partitions

Formica® HPL Properties



OTHER PRODUCTS



COLORCORE® PROTEC+

ColorCore® PROTEC+ is ideal for use in high traffic areas because of its uniform solid color, offering vast potential for innovative and stylish interiors. Applications such as counters, reception desks and furniture can be enhanced with special inlay effects and sharp edging details.

FORMICA® COMPACT® PROTEC+

Compact® PROTEC+ is a thick and exceptionally strong yet versatile grade of phenolic laminate manufactured through layers of impregnated Kraft paper and facing each side with printed décor. With variable thickness options of up to 25mm, Compact® PROTEC+ is suited for high-impact and high-moisture environments such as restroom partitions, lockers laboratory furniture, wall linings and counters or table tops.

CUSTOM GRAPHICS™ PROTEC+

Imagine the possibilities of creating a surface to call your own. Design your unique surface art on our high-performance laminate using your design, photograph, logo, illustration or painting. If you can imagine it, we can make it.

DECOMETAL®

Go beyond the decorative. Experience the stunning flexibility of laminates with real metal surfaces. DecoMetal® delivers lustrous color and sheen with textures reflecting energy, modernity and a deep respect for craftsmanship. Ideal for light-duty horizontal or vertical applications: walls, furniture, retail fixtures, signage, exhibits and displays.



MAGNETIC LAMINATE

A decorative laminate ideal for communication and display, Formica® Magnetic Laminates have a strong magnetic effect and can be written on with chalks or special markers board. It is suitable for a wide variety of applications in environments.



CHGUARD®

Formica® CHguard® is packed with a new formula that surpasses industrial benchmarks, to provide supreme performance for critical applications demanding high levels of chemical and stain resistance.



FRGUARD®+ PROTEC+

A self-extinguishing decorative panel with a wide variety of colors, FRguard®+ PROTEC+ is made with a special core material, making it an excellent choice as a fire retardant material, suitable for both commercial and residential applications.



FENIX®

Discover FENIX®, the innovative material for interior design created by Arpa Industriale for a range of vertical and horizontal interior design applications: kitchens, hospitality, healthcare, transportation, bathrooms and furniture. With low light reflectivity, the FENIX® surface is extremely opaque, soft touch and anti-fingerprint. Thermal healing of superficial micro-scratches is also possible.



FORMICA® ARCHITECTURAL DOOR

Formica® Architectural Door is surfaced by the compact laminate in 2mm thickness for more durability and impact resistance properties. It is available in different size in solid colour, wood grains, patterns and custom graphics images.

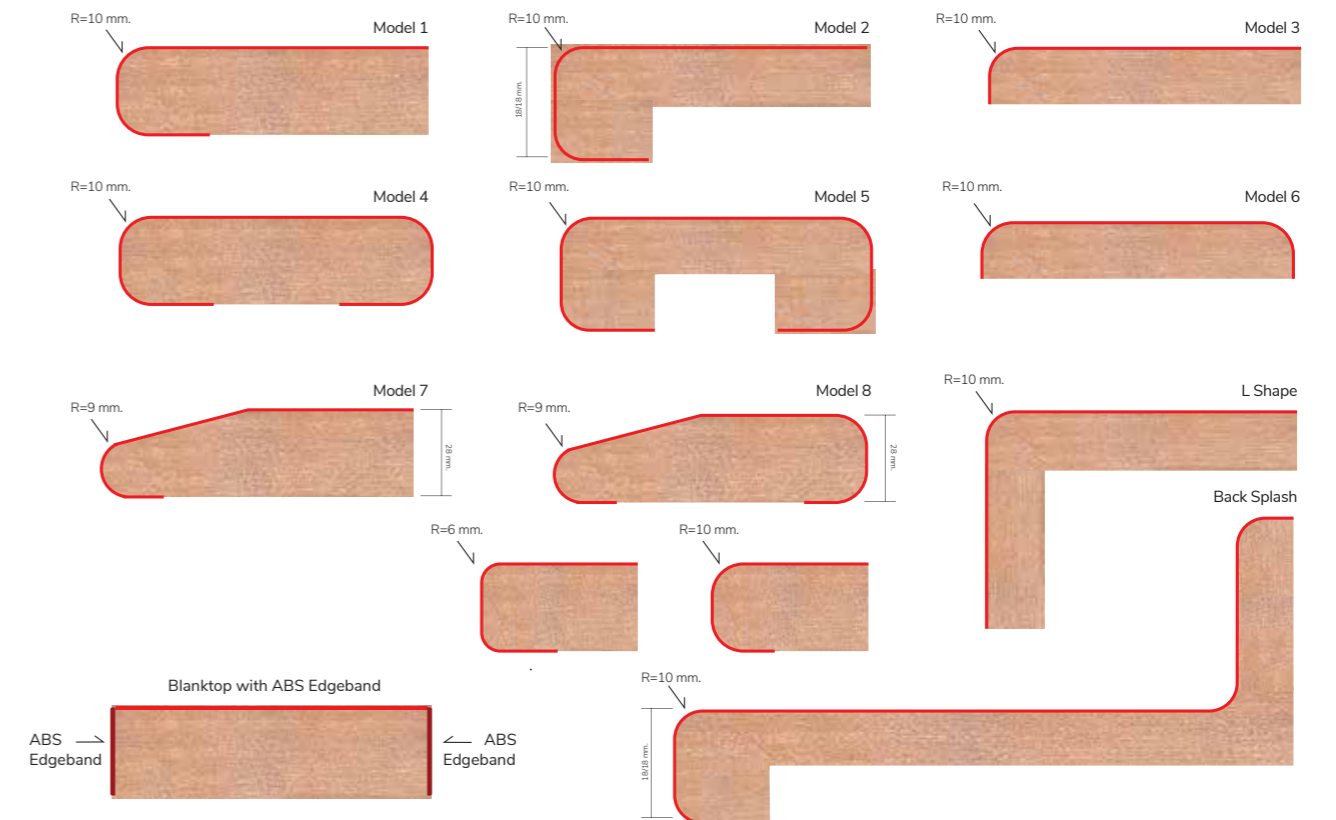


FORMICA® PERFORM COMPONENTS

Formica® Perform Components is highly affordable postformed components. Formica® Perform Components are surfaced in Formica® Decorative Laminate bonded onto either particle board or MDF substrates and backing paper for moisture resistance.

With distinctive structural properties, Formica® Perform Components have resistance to wear, scratch, stain, moisture, impact, heat and are utilized for vertical and horizontal applications.

FORMICA® PERFORM COMPONENTS PROFILE



SINCE 1913, FORMICA® DESIGNS FOR TODAY WITH FOREVER IN MIND.



Herbert A. Faber Daniel J. O'Conor

FORMICA'S FOUNDING

Formica® was founded in Cincinnati in 1913 by two young men, Herbert A. Faber and Daniel J. O'Conor. Their high-pressure plastic resins were intended to serve as electrical insulators replacing mineral Mica, which was used for that purpose at the time. Hence the name "Formica" was chosen. World-renowned artists and architects had also begun to recognize the potential of the decorative laminates and specified them for modernist and art deco interiors.

FORMICA'S SERVICES

Formica® offers a complete range of surface decorative products with Protec+™ technology (High Pressure Laminate, Compact® Grade, ColorCore®, Formica® Custom Graphics™ and FRguard®), premium decorative products (DecoMetal® and FENIX®) and a range of functional products (CHguard® and VIVIX®). All Formica® High Pressure Laminates conform to European BS EN438 standards. And meanwhile, we have got the certification of ISO 9001: 2015, ISO 14001: 2015, ISO 45001: 2018, and GREENGUARD. Formica® owns manufacturing bases worldwide, with four located in Asia. Major bases are located in Shanghai (China), Jiujiang (China), Hsinchu (Taiwan) and Bangkok (Thailand).

FORMICA'S LOGO HISTORY



As a professional word, "Formica" has been recorded in The Oxford English Dictionary as a replacement for decorative laminates.

CHAMPIONING SUSTAINABILITY THROUGH FORMICA® SURFACES.

GREENGUARD CERTIFICATION

Formica Group has taken significant steps to ensure that its products promote a healthy indoor air quality in homes, offices, schools and other indoor environments. According to the US Environmental Protection Agency (USEPA), the most effective way to reduce indoor air pollution is to reduce or eliminate harmful chemical emissions. Formica® takes pride in meeting the strict emissions limits of the GREENGUARD Environmental Institute and in achieving GREENGUARD Certification for Indoor Air Quality for Formica® Laminates, Formica® Laminates, ColorCore®, Compact® and DecoMetal® are certified in Asia according to the GREENGUARD Certification and GREENGUARD Gold Certification standards for Indoor Air Quality. Formica® FRguard®+ is certified with GREENGUARD Certification for Indoor Air Quality.

CARBON REDUCTION LABEL

Formica Group is the first laminate manufacturer in the world to be awarded with Carbon Trust's Carbon Reduction Label. Formica Group demonstrates its ongoing commitment to reducing its global environmental impact by undergoing carbon footprint assessment and labelling products with the Carbon Reduction Label. Formica Group is pleased to announce that it has measured the carbon footprint for its range of High Pressure Laminates (HPL), Continuous Pressure Laminates (CPL), Compact Laminates and Bonded Worktops, which is now qualified to carry the Carbon Trust's Carbon Reduction Label.

SINGAPORE GREEN LABEL

Formica® Laminates and Formica® Compact® Grade Laminate are Singapore Green Label certified by the Singapore Environment Council under "Environmentally Improved Low Emission Low Toxicity" category.

SINGAPORE GREEN BUILDING PRODUCT CERTIFICATION

The achievement of SGBP certification is a testament to Formica Group's commitment towards making sustainable principles. We are committed to creating innovative products that promote a healthier environment to support sustainable design, and protecting vital resources for future needs via our ongoing efforts to put our green principles in practice through life cycle assessment (LCA), sustainable operations and carbon reduction.



042-065
ENVIRONMENTALLY
IMPROVED LOW EMISSION
LOW TOXICITY



Index

Code	Description	Edgeband	Page	Ref
8967D8	Logan Oak		39	C3
8967NT	Logan Oak		39	A3
8994CK	Paint Scrape Steel		24	A3
8996CK	Paint Scrape Black		24	B3
9001NT	Noce Orvieto	DE9001NT	37	C3
9001UN	Noce Orvieto		37	D3
9005LN	Fineline		33	B2
9005NT	Fineline	DE9005NT	33	A2
9005UN	Fineline		33	C2
9006LN	Fineline Chocolate		33	B3
9006NT	Fineline Chocolate		33	A3
9006UN	Fineline Chocolate		33	D3
9010NT	Colorado Oak	DE9010NT	38	A2
9010UN	Colorado Oak		38	B2
9205NT	Legno Fineline Brown	DE9205NT	33	B4
9205UN	Legno Fineline Brown		33	D4
9222NT	Grayed Maple	DE9222NT	41	A2
9228NG	Green Birchply	DE9228NG	41	C1
9229NG	Dark Sky Birchply	DE9229NG	41	D1
9271JN	Reclaimed Denim Fiber	DE9271JN	24	A1
9271LM	Reclaimed Denim Fiber		24	B1
9281NG	Ash Riftwood		33	D1
9302HN	Fantasy Marble	DE9302HN	26	A5
9306NM	White Bardiglio	DE9306NM	26	B3
9307HN	Silver Shalestone	DE9307HN	26	B4
9310NM	White Marble Herringbone	DE9310NM	26	B2
9311NM	Silver Oak Herringbone	DE9311NM	26	C4
9312NG	Planked Urban Oak		30	A2
9313HG	ImagiGrid		23	A5
9364HG	Pearl Leather		17	A2
9364L	Pearl Leather		17	A1
9365HG	Bronze Leather		17	B2
9365L	Bronze Leather		17	B1
9366HG	Smoky Shimmer Leather		17	C2
9366L	Smoky Shimmer Leather		17	C1
9394NT	Vintage Teak		34	B3
9394UN	Vintage Teak		34	D3
9397NT	Bamboo Striped	DE9397NT	35	A4
9397UN	Bamboo Striped		35	B4
9435D8	Raw Blackwood	DE9435D8	34	A4
9436D8	Dry Blackwood	DE9436D8	34	B4
9437D8	Toffee Blackwood	DE9437D8	34	C4
9439D8	Brown Blackwood		34	D4
9440NT	Nude Cherry	DE9440NT	35	A2
9450NT	Powdered Cherry	DE9450NT	35	B2
9451NT	Slate Cherry		35	C2
9452NT	Antiqued Cherry		35	A3
9479NG	Wide Planked Walnut	DE9479NG	44	B3
9480D8	Salvage Planked Elm	DE9480D8	44	D5
9483HG	Ferro Grafite		26	B6
9484NG	Oxidized Beamwood		42	A3
9484NT	Oxidized Beamwood	DE9484NT	42	B3
9510CK	Layered Black Sand		25	A2
9511CK	Layered Sand		25	B2
9521LM	Turquoise Raw Silk		23	A3
9524LM	Indigo Raw Silk		23	B3
9525LM	Shadow Raw Silk		23	D3
9527CK	Iced Grey		24	B4
9528CK	Iced Blush		24	A4
9529CK	Iced Mint		24	D4
9532LM	Beige Plaid		23	B4
9534LM	Flannel Plaid		23	A4
9535LM	Flint Plaid		23	C4
9536LM	Menswear Plaid		23	D4
9658NG	Planked Havana Oak		30	B2
9684CK	Natural Recycled Kraft		24	B2
9966NT	Hill Top Maple	DE9966NT	43	C3
9966UN	Hill Top Maple		43	D3

Code	Description	Edgeband	Page	Ref
C0459	Brite White		57	B1
C0909	Black		57	A2
C0909G	Black		57	B2
C0933	Mission White		57	A1
C0949	White		57	E1
C0949G	White		57	F1
C7223	New White		57	C1
C7223G	New White		57	D1
T116NT	Teak Allover	DET116NT	34	A2
T116UN	Teak Allover		34	D2
T116WB	Teak Allover		34	B2
W0845HG	Spectrum Red		54	B4
W0909HG	Black		54	B5
W0927HG	Folkstone		54	C1
W0932HG	Antique White		54	B2
W0933HG	Mission White		54	A2
W1485HG	Chrome Yellow		54	C3
W3200HG	Ultra White		54	A1
W3210HG	Levante		54	A3
W4177HG	Lime		54	B3
W5347HG	Maui		54	A3
W7851HG	Spectrum Blue		54	A5
W7949HG	White		54	B1
W7966HG	New Burgundy		54	C4
W9313HG	ImagiGrid		54	C2

DecoMetal®

Code	Description	Page	Ref
D1990	Polished Black	60	A1
D1999	Copper Antique	59	D2
D2006	Matte Bronze Aluminium New	60	B6
D2022	Brushed Aluminium	61	A2
D2032	Brushed Pewter	61	A1
D2042	Brushed Goldtone	60	A5
D2052	Brushed Copper Aluminium	61	C1
D2113	Copper Maple Leaves	60	D3
D2126	Bronze Brushed Aluminium	61	B1
D2178	Brushed Stainless Steel	61	C2
D2802	Dimpled Goldtone	60	C6
D2805	Lounge Bronzestone	60	C1
D2806	Lounge Steeltone	60	B1
D2807	Dimpled Bronzestone	60	D6
D4249	Aluminium Longline	61	B2
D4508	Brushed Magnetic Board	57	E4
D4691	Copper Stratos Diagonal	59	B2
D4702	Raw Magnetic Board	57	B5
D4740	Horizontal Corrugated Steeltone	59	A5
D4751	Cella Polished Tea	58	E4
D4899	Bronze Mesh	60	B3
D4939	Cella Goldtone	58	A5
D4941	Champagne Mesh	59	D3
D5306	Plex Argent	60	B2
D5307	Plex Umbra	60	D2
D5309	Plex Gold	60	F2
D5310	Plex Graphite	60	C2
D5312	Brushed Umbra	61	D1
D5391	Graphite Veil	60	C4
D5392	Copper Veil	60	C3
D5471	Lava Goldtone	58	E6
D5474	Lava Smokey Grey	58	D6
D6483	Craft Bronzestone	60	E1
D6484	Craft Argent	60	D1
D6485	Craft Umbra	60	F1
D6486	Plex Bronzestone	60	E2
D8003	Mirror Aluminium	60	A6
D8004	Polished Gold Aluminium	60	A2
D8017	Horizontal Corrugated Matte Anthracite	60	A3
D8021	Light Hammer Copper Antiqued	59	E2
D8023	Aluminium Crush	60	D4
D8025	Copper Crush	60	E4
D8030	Copper Plain Crush Stipple	60	F4
D8032	Vertical Corrugated Matte Aluminium	60	A4
D8034	Aluminium Mesh	60	B4
D8040	Cross-Brushed Brownish Grey	61	F1
D8103	Champagne Longline	61	E2
D8105	Aluminium Brushed Black	61	E1
D8122	Anodised Aluminium	61	A3
D8123	Gold Brush	61	C3
D8124	Silver Brush	61	B3
D8202	Grid-point Gloss Whiteboard	57	B3
D8205	Black Magnetic Chalkboard	57	E3
D8206	Gloss Magnetic Whiteboard	57	A3
D8211	Green Magnetic Chalkboard	57	D3
D8234	Macchiato Magnetic Chalkboard	57	C3
D8265	Cella Polished Coppertone	58	C4
D8266	Cella Polished Smokey Grey	58	A4
D8267	Slate Black	57	F3
D8269	Crisp Gold	59	D4
D8270	Crisp Anthracite	59	B4
D8271	Crisp Oxygen	59	C4
D8272	Crisp Rose	59	A4
D8274	Crisp Antique Copper	59	E4
D8275	Moon Turquoise Copper	59	B1
D8276	Moon Dark Copper	59	D1
D8277	Moon Light Copper	59	A1
D8278	Moon Brass	59	E1

Code	Description	Page	Ref
D8279	Diamond Antique Brass	59	A6
D8280	Diamond Antique Copper	59	B6
D8281	Cascade Natural	58	A2
D8282	Cascade Goldtone	58	C2
D8283	Cascade Tea	58	D2
D8284	Cascade Smokey Grey	58	B2
D8285	Cascade Coppertone	58	E2
D8286	Cella Polished Natural	58	B4
D8287	Cella Polished Goldtone	58	D4
D8288	Crossline Polished Natural	58	A1
D8289	Crossline Polished Goldtone	58	C1
D8290	Crossline Polished Tea	58	E1
D8291	Crossline Polished Smokey Grey	58	B1
D8292	Crossline Polished Coppertone	58	D1
DH003	Cella Coppertone	58	B5
DH004	Cella Black	58	C5
DH005	Brushed Bronzestone	60	F5
DH007	Matte Gunmetal	58	E5
DH008	Mirror Coppertone	58	C3
DH014	Matrix Champagne	59	D5
DH018	Dimpled Anthracite	60	E6
DH020	Footplate Steeltone	59	E5
DH028	Stone Grey Magnetic Whiteboard	57	B4
DH029	Stone Grey Magnetic Chalkboard	57	C4
DH030	Cross-Brushed Magnetic Board	57	F4
DH031	Macchiato Magnetic Whiteboard	57	D4
DH035	Cross-Brushed Natural	58	A3
DH036	Cross-Brushed Goldtone	58	B3
DH038	Brushed Graphite	60	E5
DH039	Anthracite Mesh	59	E3
DH089	Lava Coppertone	58	B6
DH091	Copper Brass Antique	59	A2
DH094	Satin Steeltone	58	D5
DH098	Dots Reverse	60	F3
DH105	Dots Steeltone	60	E3
DH110	Light Grey Magnetic Whiteboard	57	A4
DH112	Applegreen Magnetic Whiteboard	57	A5
DH123	Mirror Tea	58	D3
DH137	Brushed Champagne	60	C5
DH138	Bronzestone Longline	61	D2
DH139	Brushed Rosegold	60	D5
DH140	Natural Polished Mesh	59	B3
DH141	Lava Natural	58	A6
DH142	Goldtone Polished Mesh	59	A3
DH144	Lava Tea	58	C6
DH147	Diamond Bronzestone	59	D6
DH148	Vintage Mesh	59	C3
DH187	Vertical Corrugated Steeltone	59	B5

ASIA OFFICES

CHINA

Formica (China) Trading Co. Ltd

Shanghai

Rm. 407, Office Building Block B National Convention and Exhibition Center
181 Laigang Road, Xujing Town
Qingpu District
Shanghai 201702, China
Tel: (86-21) 6010-2688
Fax: (86-21) 6010-2659

Beijing

Rm. 530, Grand Pacific Building A
No. 8 Guanghua Road
Chaoyang District
Beijing 100026, China
Tel: (86-10) 6581-7717
Fax: (86-10) 6581-3708

Guangzhou

Rm. 1209, Jie Tai Plaza
No. 218-222 Zhongshan 6 Road
Yuexiu District
Guangzhou 510180, China
Tel: (86-20) 8132-0258/0259
Fax: (86-20) 8132-0033/0039

Dongguan

Rm. 1412, Block 3, One Mall
No. 200 Hongfu Road
Nancheng District
Dongguan 523073, China
Tel: (86-769) 2270-2216/2219
Fax: (86-769) 2278-1770

Shenzhen

Rm. 1501-1504, 15/F, Reith Center
(Tower A, Century Holiday Plaza)
No. 9030, North of Shennan Rd
Nanshan District
Shenzhen 518053, China
Tel: (86-755) 8287-4868
Fax: (86-755) 8287-4880

HONG KONG

Formica (Asia) Ltd

Rm. 1305-9, 13/F, Olympia Plaza
255 King's Road
North Point, Hong Kong
Tel: (852) 2598-0117
Fax: (852) 2598-6577

INDIA

Formica Laminate (India) Pte Ltd

591-592, 6 Km Kalol-Vamaj Road
Village: Piyaj
Tal: Kalol
Dist: Gandhi Nagar
Gujarat 382721
Tel: (632) 553-9996
Fax: (632) 856-0407

INDONESIA

Sales Representative Office

The CEO Building, 12th Floor
Jl. TB Simatupang no 18C
Jakarta Selatan 12430, Indonesia
Tel: (62-21) 2960-1551

MALAYSIA

Formica (Malaysia) Sdn Bhd

B-10-3A, 10/F, Menara Bata
PJ Trade Centre
No. 8, Jalan PJU 8/8A
Bandar Damansara Perdana
47820 Petaling Jaya
Selangor D.E, Malaysia
Tel: (60-3) 7710-0512
Fax: (60-3) 7727-0510

PHILIPPINES

Sales Representative Office

Unit 1401, 14/F, MDI Corporate Center
10th Avenue Corner, 39th Street
Bonifacio Global City
Taguig City, Philippines
Tel: (632) 553-9996
Fax: (632) 856-0407

SINGAPORE

Formica (Singapore) Pte Ltd

38 Armenian Street
Singapore 179942
Tel: (65) 6514-1313
Fax: (65) 6846-7030

TAIWAN

Formica Taiwan Corporation

Taipei

6/F, No. 68-70, Section 3
Nanking East Road, Zhongshan District
Taipei City 104, Taiwan
Tel: (886-2) 2515-1017
Fax: (886-2) 2517-0542

Taichung

No. 122
Jingke Rd, Nantun District
Taichung City 408, Taiwan
Tel: (886-4) 2359-5680
(886-4) 2472-6276
Fax: (886-4) 2359-5890

Kaohsiung

15/F-2, No. 110
Sanduo 4th Road, Lingya District
Kaohsiung City 802, Taiwan
Tel: (886-7) 330-2365
Fax: (886-7) 330-2175

THAILAND

Formica (Thailand) Co. Ltd

51/27 Moo 2
Poochaosamingprai Road
Bangyaparak, Phrapradaeng
Samutprakarn 10130, Thailand
Tel: (66-2) 701-9600
Fax: (66-2) 384-7537

Thailand Sales Office

216/63 L.P.N. Tower, 15/F
Nanglinchee Road
Chongnonsee Yannawa
Bangkok, 10120 Thailand
Tel: (66-2) 285-4473
(66-2) 285-4474
Fax: (66-2) 285-2899

VIETNAM

Sales Representative Office

3/F, 414 Nguyen Thi Minh Khai Street
District 3, Ho Chi Minh City, Vietnam
Tel: (84-28) 3832-6128
Fax: (84-28) 3832-6129

