

Formica® Coobrite™ Cubicle System



Formica® Coobrite™ Cubicle System combines aluminium alloy and stainless steel perfectly. The brightness of the hardware surface makes cubicle present a brilliant outlook with a practical function.



BS EN438

BS476
Part 6 & 7



Citistore Tsuen Wan

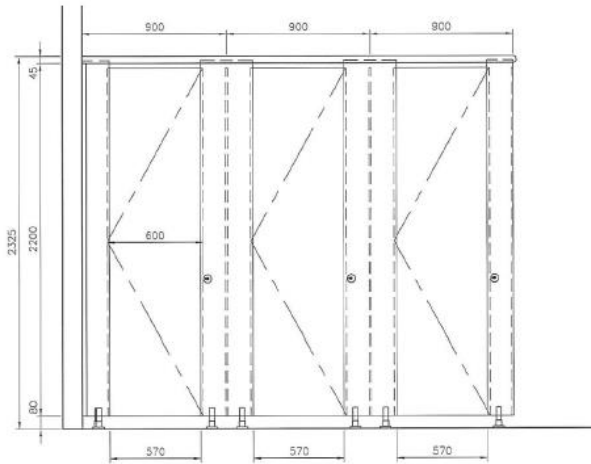


Victoria Park Tennis Court

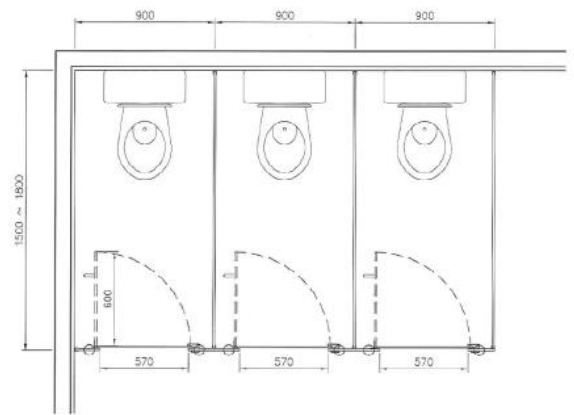


Job Reference

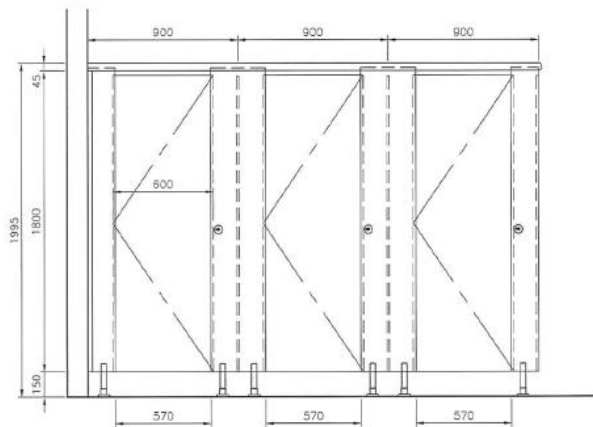
- Shatin Race Course
- Hong Kong Jockey Club - Wanchai Branch
- Cathy Pacific HKIA Lounges
- Lingnan University
- Pui Ching Primary School
- AEON Department Store-Whampoa Garden
- St. Teresa's Hospital
- Four Season Hotel Macao
- Grand Lisboa Macau
- New Macau HK Ferry Terminal
- Custom Headquarter, North Point
- ICAC Headquarter, North Point
- Gold Coast Yacht & Country Club
- Victoria Park Tennis Court
- Oceanus Casino, Macau



Front elevation A

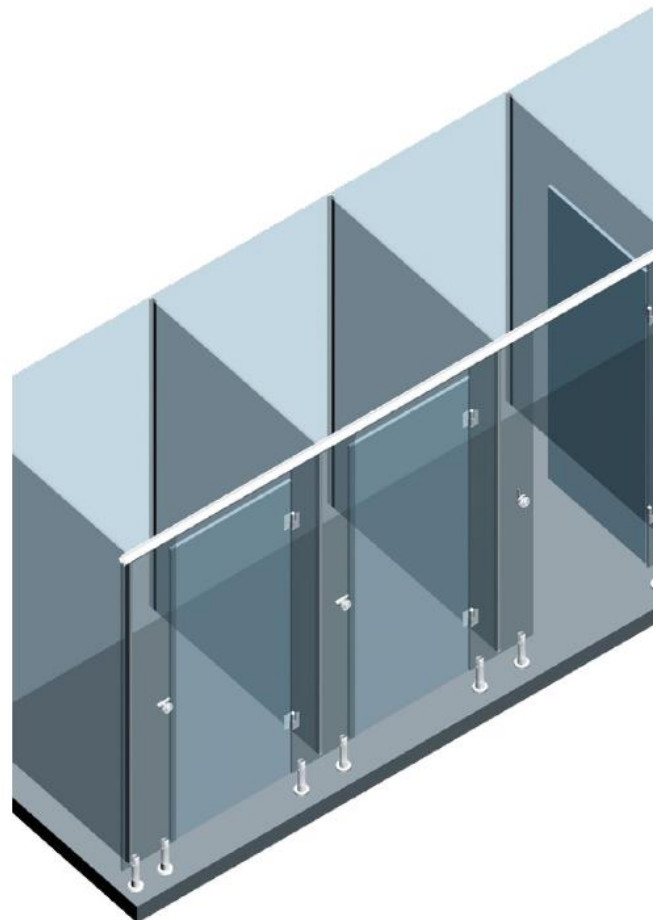


Floor Plan



Front elevation B

Front elevation (A) (B) Remark: These drawings are for reference only. Formica cubicle's height is highly flexible to suit your requirement. Please mention the height you require at the specification.



Specification

Material:

Formica® Protec+™ Silver (Ag+) antimicrobial compact laminate, blackcore, decopaper on double sides in matte finish or naturelle (NT) finish 12mm thick.

International Standard & Certifications:

Greenguard Gold Certification; Greenguard Certification; BS EN-438-2016; ISO9001; ISO14001; Carbon Reduction Label; BS476 Part 6 and 7; Antifungal ASTM G21:2013 test report, with 0 (None); Antibacterial JIS Z2801:2012 prevent growth of bacterial up to 99.9% within 24 hours.

Hardware:

Stainless steel hardware includes self closing / opening gravity hinge, indicator lock set with emergency opening and coat hook. Aluminum alloy U-channel & height adjustable leg and Anodized aluminum headrail.

Optional:

80mm Height adjustable leg, U bracket, angle bracket and single toilet roll holder.

Recommended Dimension:

800-900mm (W) x 1500-1800mm (D) x 2325mm (H) / 1995mm (H)
(Overall height from finish floor level to headrail)



Standard Hardware

- 1) Headrail (Anodized Aluminum)
- 2) U Channel (Aluminum Alloy)
- 3) Self Closing / Opening Gravity Hinge (S.s.)
- 4) Indicator Lock Set With Emergency Opening (S.s.)
- 5) Height Adjustable Leg 150Mm (H) (Aluminum Alloy)
- 6) Coat Hook (S.s.)

Optional Hardware

- 7) Height Adjustable Leg, 80Mm (H) (Aluminum Alloy)
- 8) U Bracket (S.s.)
- 9) Angle Bracket (S.s.)
- 10) Single Toilet Roll Holder