

DECOMETAL® SRM
SCRATCH-RESISTANT MATT

TREND
GO MATT



The once dominant glossy look has been pushed aside, with technology allowing us to enjoy the more natural, toned-down beauty of matt finishes, both inside and outside spaces.

Matt creates interesting, understated surfaces that absorb light and come with a low-maintenance finish. It offers a grounding contrast to glam elements, adding a touch of sleek, glamorous sophistication to a space.

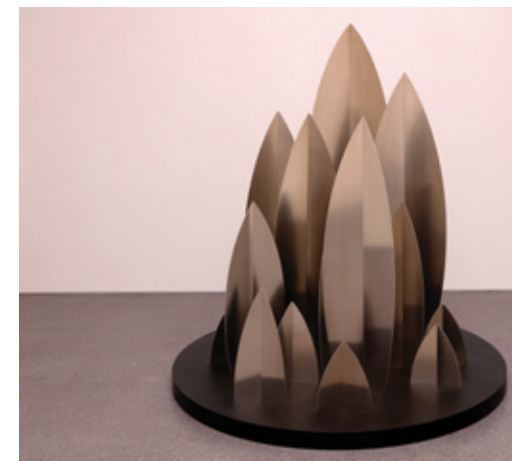


TREND
BEYOND MATT



Matt finish, in combination with shining metal material, creates a striking magic of semi-sheens metallic effect which reinforces an emotional appeal of softness, rich colours and durable surfaces.

Dulled metals could provide a subtle finish for walls and facades, in matt shades of silver, gold, copper, bronze and dark tone.



DecoMetal® SRM is a new high-quality, matt surface provided on selected aluminum, copper and brass decors.

The innovative coating process involving special lacquers and hardening techniques creates an ultra-matt look with a unique impression of depth, producing a high scratch-resistant surface with anti-fingerprint properties. The resulting surface is one with high-end textures and hard-wearing qualities.

DecoMetal® SRM is suitable for horizontal use, for example, on counters in exhibitions, shop fittings, or counters in dining spaces, and tables/work surfaces in the office or kitchen. It is also useful for spaces that experience high traffic, like hotels and restaurants.



Lacquered surface with super matt depth effect

Deep matt surfaces that provide the impression of warmth and elegance



Anti-fingerprint

Unique technology that hides fingerprints and scuff marks, especially in high-use areas



High surface wear and scratch-resistant

Durable enough to withstand scratches from hard objects

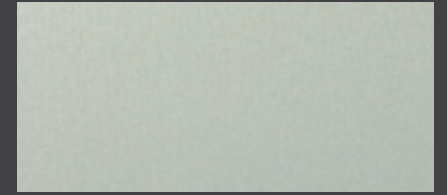


Suitable for horizontal use

Create an impression of increased space for multiple surface applications beyond vertical panels



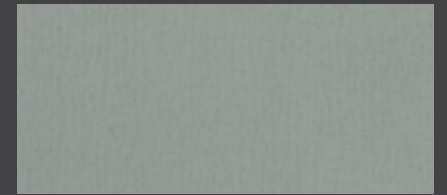
Satin Steeltone
DH094 SRM



Alu Softmatt Natural
DH019 SRM

0,8 mm

1



Alu Brushed Natural
DH191 SRM

1,0 mm

2



Satin Steeltone
DH094 SRM

1,0 mm

3

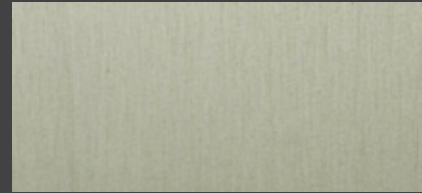
A



Full View



Brushed Aluminium
D2022 SRM 1.0 mm



Brushed Champagne
DH137 SRM 1.0 mm

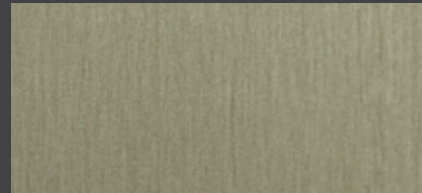


Brushed Goldtone
D2042 SRM 1.0 mm

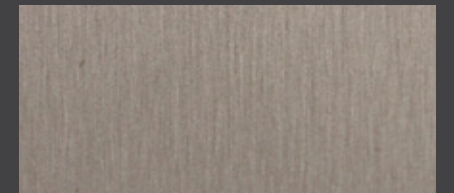
1



Brushed Pewter
D2032 SRM 1.0 mm



Brushed Bronzestone
DH005 SRM 1.0 mm



Brushed Rosegold
DH139 SRM 1.0 mm

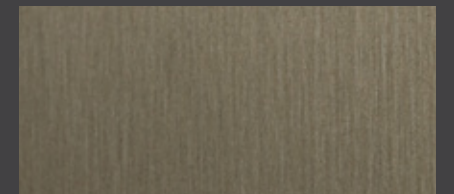
2



Brushed Graphite
DH038 SRM 1.0 mm



Brushed Copper Aluminium
D2052 SRM 1.0 mm



Bronze Brushed Aluminium
D2126 SRM 1.0 mm

3

Brushed Rosegold
DH139 SRM



Full View

A

A

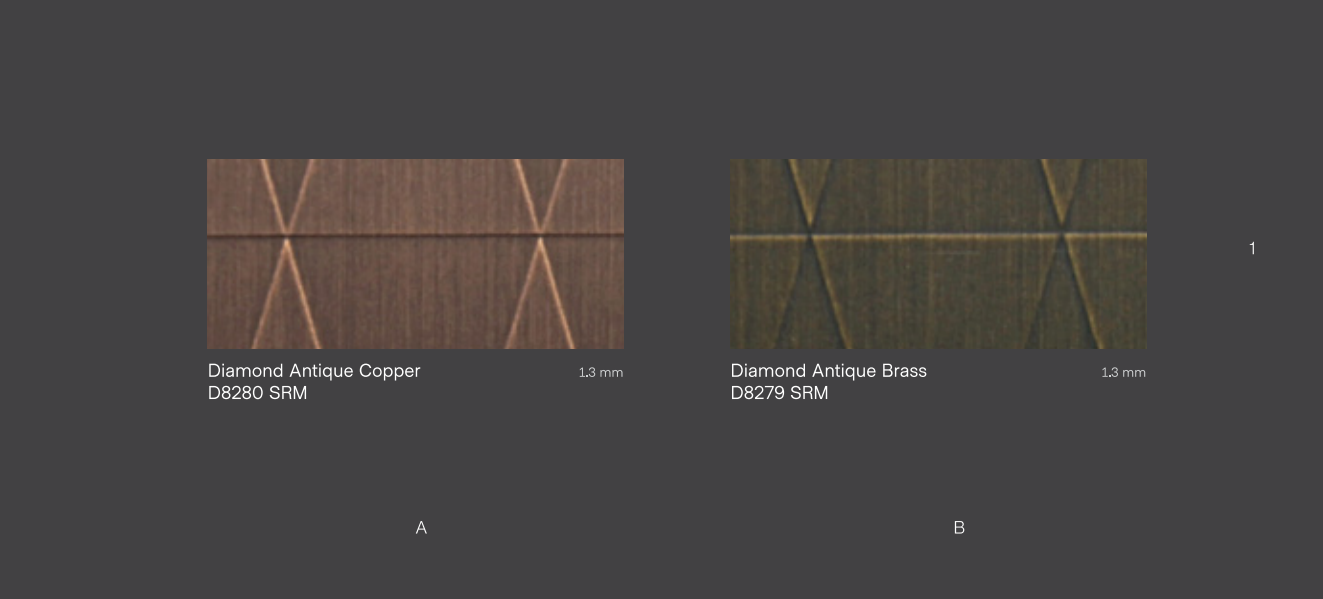
B



Full View



Cross-Brushed Goldtone
DH036 SRM



Diamond Antique Copper
D8280 SRM

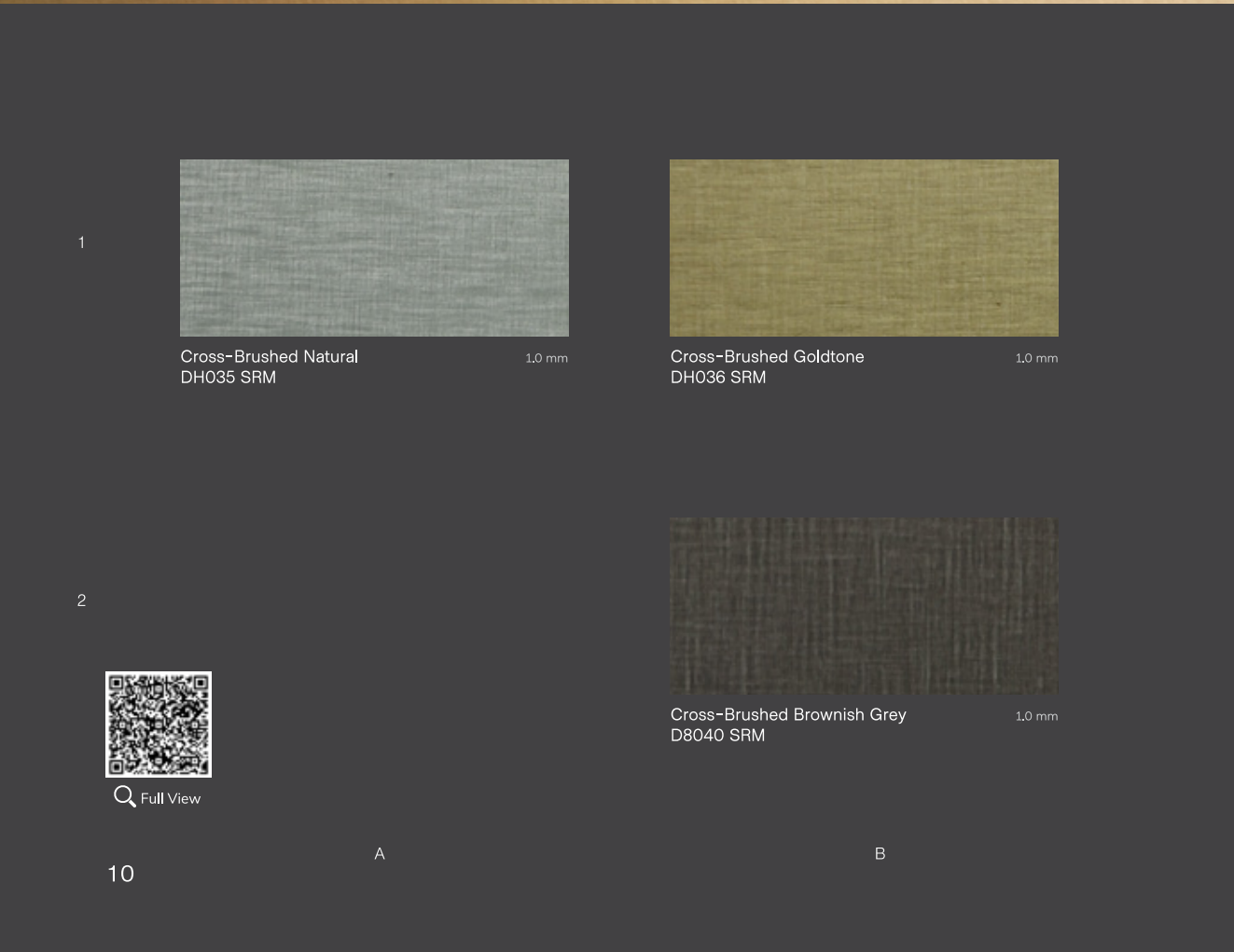
1.3 mm

Diamond Antique Brass
D8279 SRM

1.3 mm

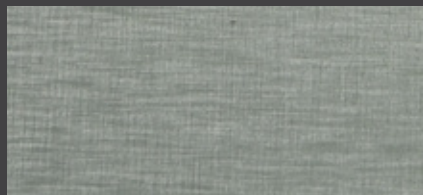
A

B



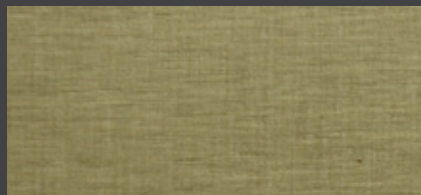
Diamond Antique Brass
D8279 SRM

1



Cross-Brushed Natural
DH035 SRM

1.0 mm



Cross-Brushed Goldtone
DH036 SRM

1.0 mm

2



Full View

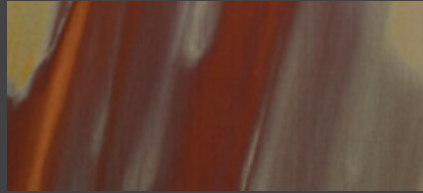


Cross-Brushed Brownish Grey
D8040 SRM

1.0 mm



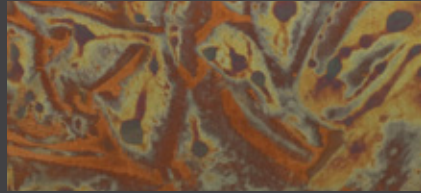
Full View



Copper Stratos Diagonal
D4691 SRM

1.3 mm

A



Copper Antique
D1999 SRM

1.3 mm

B



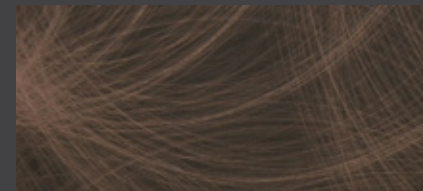
Copper Stratos Diagonal
D4691 SRM



Full View

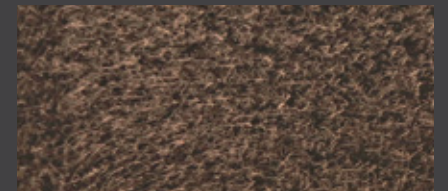


Copper Plain Crush Stipple
D8104 SRM



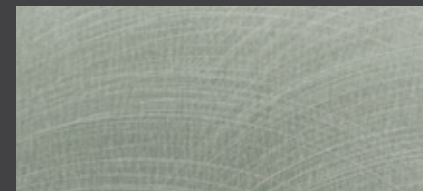
Copper Crush
D8109 SRM

1.3 mm



Copper Plain Crush Stipple
D8104 SRM

1.3 mm



Aluminium Crush
D4116 SRM

1.0 mm

A



Full View

B

Go beyond the decorative. Experience the stunning flexibility of laminates with real metal surfaces.

DecoMetal® delivers lustrous color and sheen with textures reflecting energy, modernity and a deep respect for craftsmanship. Ideal for light-duty horizontal or vertical applications: walls, furniture, retail fixtures, signage, exhibits and displays.



Made with real metal foil



Easy cleaning



Easy installation



Outstanding haptics



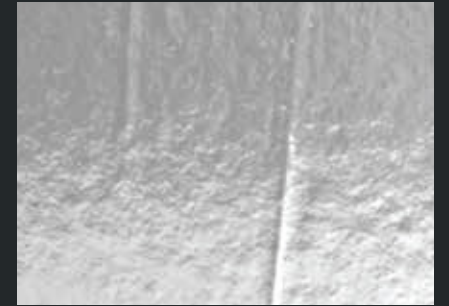
Diamond Antique Copper
D8280



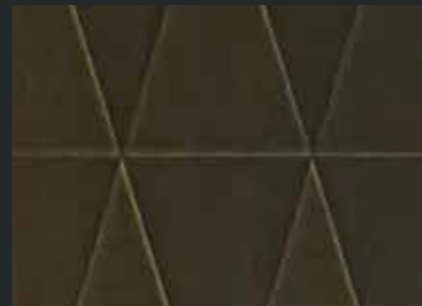
Diamond Bronzestone
DH147 1.0 mm



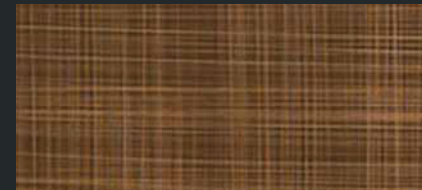
Lounge Bronzestone
D2805 1.3 mm



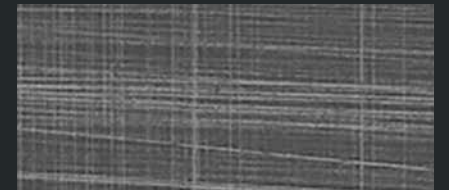
Lounge Steeltone
D2806 1.3 mm



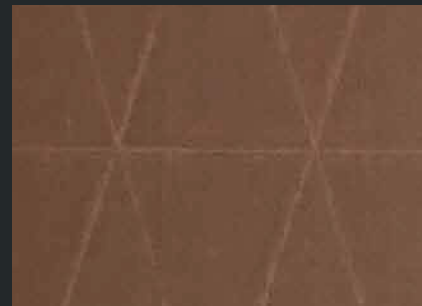
Diamond Antique Brass
*D8279 1.3 mm



Copper Veil
D5392 1.3 mm



Graphite Veil
D5391 1.3 mm



Diamond Antique Copper
D8280 1.3 mm



Matrix Champagne
DH014 1.3 mm

A

A

B



Full View



Full View

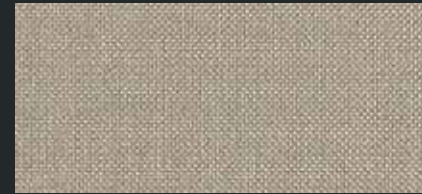
GEOMETRIC MODERN

*D8279 Diamond Antique Brass

There is a width limitation in design due to the nature of the raw brass foil material. Therefore, for this item, there will be a joint line design effect in the middle of the 4' x 8' size full sheet. For full sheet design, please refer to Formica website www.formica.com



Plex Gold
D5309



Plex Argent
D5306

1.0 mm



Plex Gold
D5309

1.0 mm

1



Plex Graphite
D5310

1.0 mm



Plex Bronzestone
D6486

1.0 mm

2



Plex Umbra
D5307

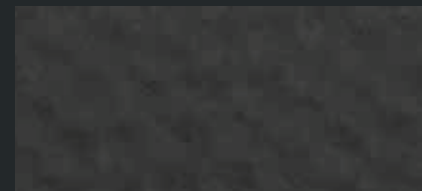
1.0 mm



Dimpled Goldtone
D2802

1.0 mm

3



Dimpled Anthracite
DH018

1.0 mm



Dimpled Bronzestone
D2807

1.0 mm

4

A

B

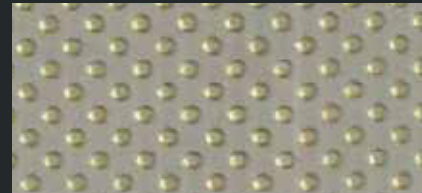
GEOMETRIC MODERN



Full View

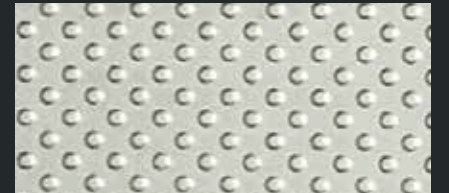


Graphite Veil
D5391



Dots Reverse
DH098

1.3 mm



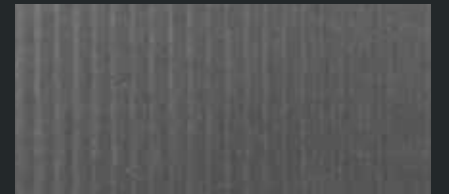
Dots Steeltone
DH105

1.3 mm



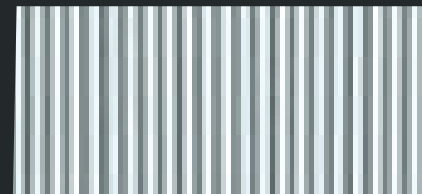
Horizontal Corrugated Steeltone
D4740

0.9 mm



Vertical Corrugated Steeltone
DH187

0.9 mm



Vertical Corrugated
Matte Aluminium
D4748

0.9 mm



Horizontal Corrugated
Matte Anthracite
D4778

0.9 mm



Footplate Steeltone
DH020

1.3 mm

A

B

GEOMETRIC MODERN



Full View



Craft Bronzestone
D6483

Craft Umbra
D6485



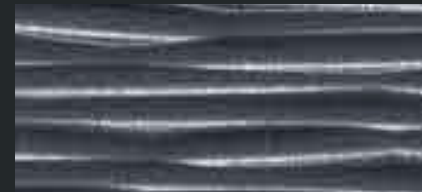
Cella Goldtone
D4939

1.3 mm



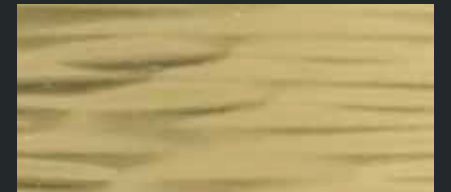
Cella Coppertone
DH003

1.3 mm



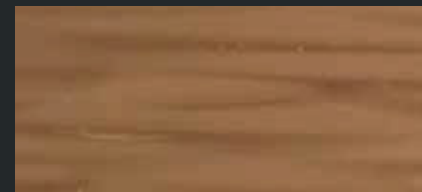
Cella Black
DH004

1.3 mm



Cella Polished Goldtone
D8287

1.3 mm



Cella Polished Coppertone
D8265

1.3 mm



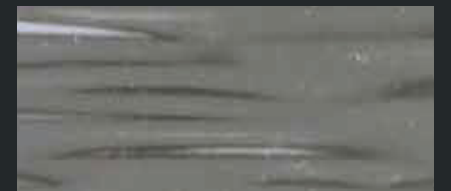
Cella Polished Tea
D4751

1.3 mm



Cella Polished Natural
D8286

1.3 mm



Cella Polished Smokey Grey
D8266

1.3 mm

A

B

SOPHISTICATED CRAFT



Full View



Cascade Goldtone
D8282



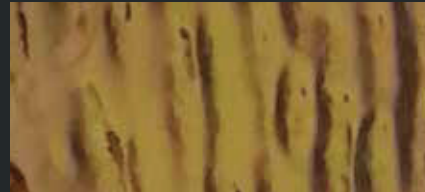
Craft Bronzestone
D6483 1.3 mm



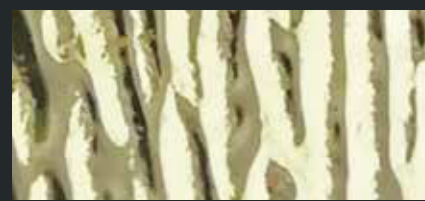
Craft Argent
D6484 1.3 mm



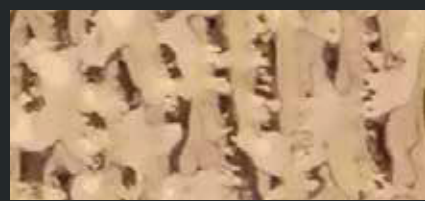
Craft Umbra
D6485 1.3 mm



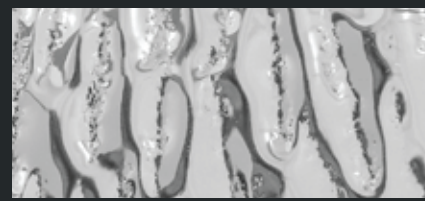
Cascade Tea
D8283 1.3 mm



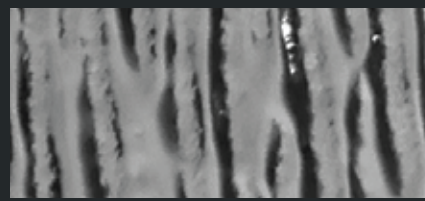
Cascade Goldtone
D8282 1.3 mm



Cascade Coppertone
D8285 1.3 mm



Cascade Natural
D8281 1.3 mm



Cascade Smokey Grey
D8284 1.3 mm

A

B

SOPHISTICATED CRAFT



Full View



Crossline Polished Natural
D8288

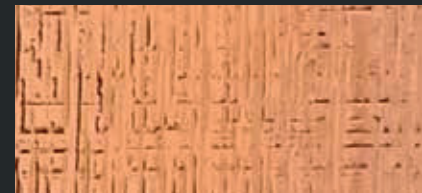
1.3 mm



Crossline Polished Smokey Grey
D8291

1.3 mm

1



Crossline Polished Coppertone
D8292

1.3 mm



Crossline Polished Tea
D8290

1.3 mm

2



Crossline Polished Goldtone
D8289

1.3 mm

3

A

B

SOPHISTICATED CRAFT



Full View

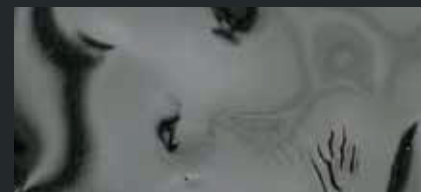


Lava Smoky Grey
D5474



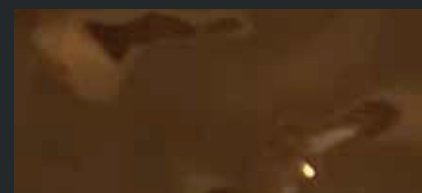
Lava Goldtone
D5471

1.3 mm



Lava Smokey Grey
D5474

1.3 mm



Lava Tea
DH144

1.3 mm



Lava Coppertone
DH089

1.3 mm



Lava Natural
DH141

1.3 mm

A

B

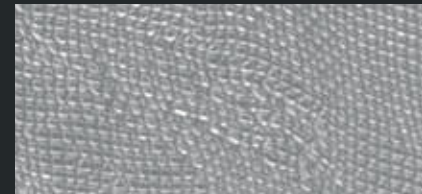
SOPHISTICATED CRAFT



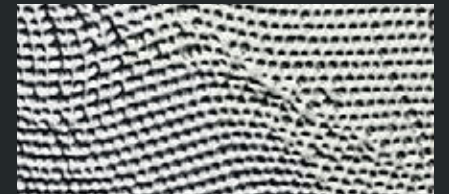
Full View



Aluminium Mesh
D2035



Aluminium Mesh
D2035 1.3 mm

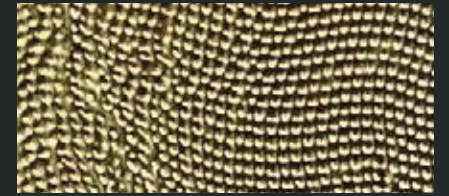


Natural Polished Mesh
DH140 1.3 mm

1

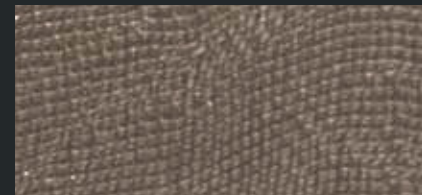


Champagne Mesh
D4941 1.3 mm



Goldtone Polished Mesh
DH142 1.3 mm

2

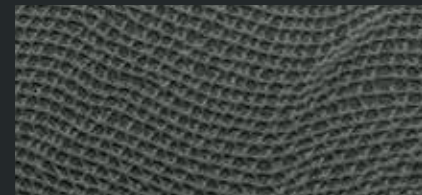


Bronze Mesh
D4899 1.3 mm



Anthracite Mesh
DH039 1.3 mm

3



Vintage Mesh
DH148 1.3 mm

4

A

B

SOPHISTICATED CRAFT



Full View



Mirror Aluminum
D2021



Polished Black
D1990

1.0 mm



Mirror Aluminum
D2021

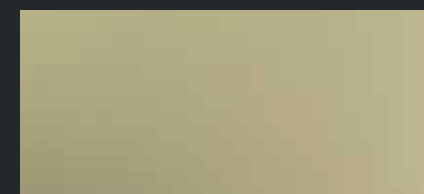
1.0 mm

1



Mirror Tea
DH123

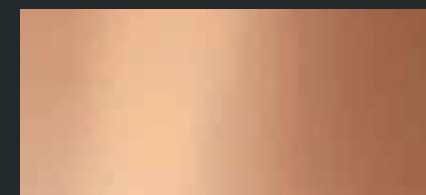
1.0 mm



Polished Gold Aluminium
D2041

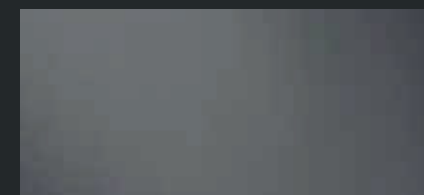
1.0 mm

2



Mirror Coppertone
DH008

1.0 mm



Matte Gunmetal
DH007

1.0 mm

3

A

B

BASIC FUNCTIONAL



Full View



Bronze Brushed Aluminium
D2126

Noble Around Sukhumvit 33 Condominium,
Bangkok, Thailand



Brushed Copper Aluminium
D2052

1.0 mm



Brushed Goldtone
D2042

1.0 mm

1



Bronze Brushed Aluminium
D2126

1.0 mm



Brushed Rosegold
DH139

1.0 mm

2



Champagne Longline
D8103

1.0 mm



Bronzestone Longline
DH138

1.0 mm

3



Aluminium Longline
D4249

1.0 mm

4

A

B

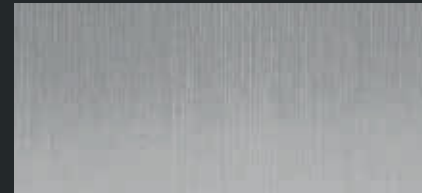
BASIC FUNCTIONAL



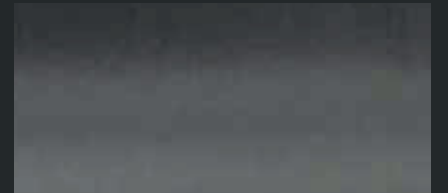
Full View



Brushed Stainless Steel
D2178



Brushed Aluminium
D2022 1.0 mm

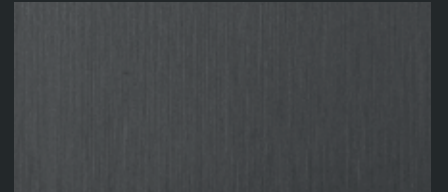


Brushed Stainless Steel
D2178 0.8 mm

1



Brushed Pewter
D2032 1.0 mm



Brushed Umbra
D5312 1.0 mm

2



Aluminium Brushed Black
D8105 1.0 mm



Brushed Graphite
DH038 1.0 mm

3



Brushed Champagne
DH137 1.0 mm



Brushed Bronzestone
DH005 1.0 mm

4

A

B

BASIC FUNCTIONAL



Full View



Gold Brush
D8123



Matte Bronze Aluminium New
D2006 1.0 mm

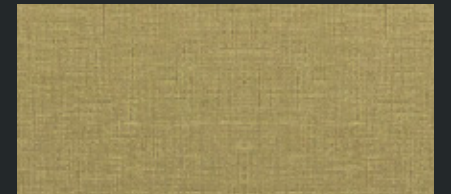


Satin Steeltone
DH094 1.0 mm

1

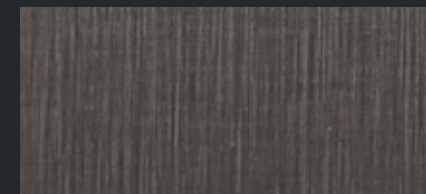


Cross-Brushed Natural
DH035 1.0 mm

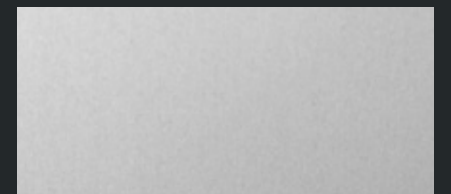


Cross-Brushed Goldtone
DH036 1.0 mm

2



Cross-Brushed Brownish Grey
D8040 1.0 mm

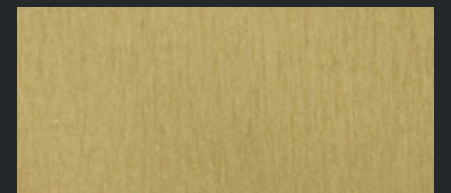


Anodised Aluminium
D8122 0.7 mm

3



Silver Brush
D8124 0.7 mm



Gold Brush
D8123 0.7 mm

4

A

B

BASIC FUNCTIONAL



Full View

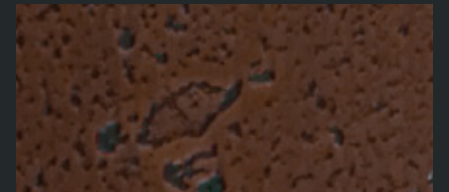


Moon Brass
D8278



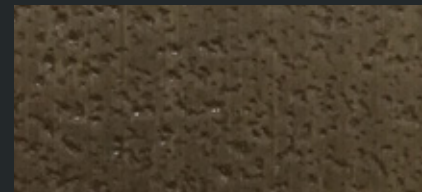
Moon Light Copper
D8277

1.3 mm



Moon Dark Copper
D8276

1.3 mm



Moon Brass
*D8278

1.3 mm



Moon Turquoise Copper
D8275

1.3 mm

A

B

ARTISTIC HANDS

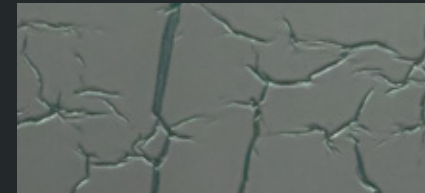


Full View

*D8278 Moon Brass

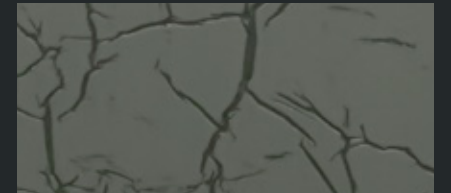
There is a width limitation in design due to the nature of the raw brass foil material. Therefore, for this item, there will be a joint line design effect in the middle of the 4' x 8' size full sheet. For full sheet design, please refer to Formica website www.formica.com

Crisp Oxygreen
D8271



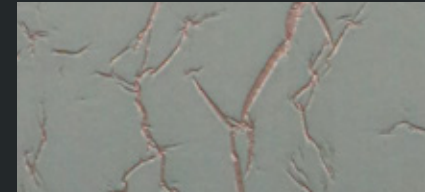
Crisp Oxygreen
D8271

1.0 mm



Crisp Anthracite
D8270

1.0 mm



Crisp Rose
D8272

1.0 mm



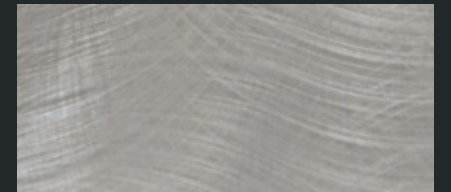
Crisp Gold
D8269

1.0 mm



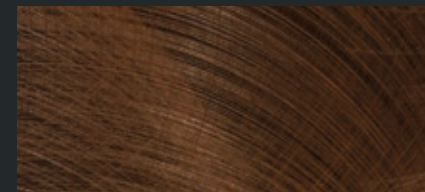
Crisp Antique Copper
D8274

1.3 mm



Aluminium Crush
D4116

1.0 mm



Copper Crush
D8109

1.3 mm



Copper Plain Crush Stipple
D8104

1.3 mm

A

B

ARTISTIC HANDS



Full View



Copper Stratos Diagonal
D4691



Light Hammer Copper Antiqued
D2121

1.3 mm



Copper Maple Leaves
D2113

1.3 mm



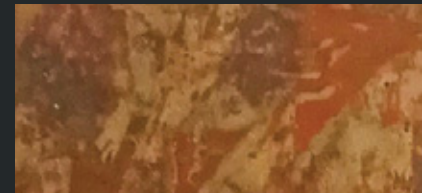
Copper Brass Antique
*DH091

1.0 mm



Copper Stratos Diagonal
D4691

1.3 mm



Copper Antique
D1999

1.3 mm

A

B

ARTISTIC HANDS

*DH091 Copper Brass Antique

There is a width limitation in design due to the nature of the raw brass foil material. Therefore, for this item, there will be a joint line design effect in the middle of the 4' x 8' size full sheet. For full sheet design, please refer to Formica website www.formica.com



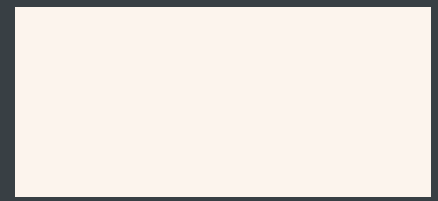
Full View

A decorative laminate ideal for communication and display, Formica® Magnetic Laminates have a strong magnetic effect and can be written on with chalks or special board markers. Ideal for a wide variety of applications in environments such as retail, education, commercial and residential.

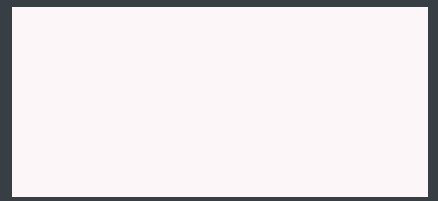


Gloss Magnetic Whiteboard D8206

Magnetic Write with whiteboard marker



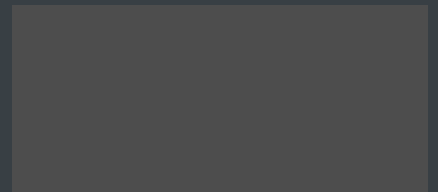
Gloss Magnetic Whiteboard D8206



Grid-point Gloss Whiteboard *D8202



Light Grey Magnetic Whiteboard DH110



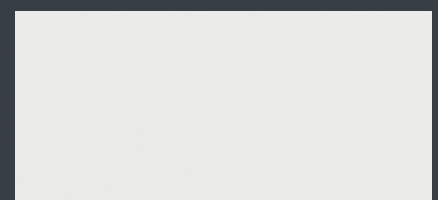
Stone Grey Magnetic Whiteboard DH028



Macchiato Magnetic Whiteboard DH031



Applegreen Magnetic Whiteboard DH112



Projector Matte D8207

MAINTENANCE GUIDE

Pre-Cleaning

- The surfaces are protected with a removable film.
- It is strongly recommended to clean the surface before using the board for the first time to remove any possible residues of the films.
- A conventional spirit (ethyl alcohol) can be used for pre-cleaning.
- Never use detergents to clean the surface.

Board Markers

- Use water soluble whiteboard markers for writing on white board.
- Marker pen must be stored horizontally so that the ink and solven are kept mixed.
- The chalk board is designed to be used with chalk. The use of an other tools might not yield the same cleaning result.
- Do not leave marker on the surface for more than 30 days.
- Never use permanent marker or sketch marker or any tool which contain fat substances.

After-Use Cleaning

- A microfibre cloth or eraser is recommended.
- Microfiber erasers need to be vacuumed regularly.
- Avoid heavy rubbing of the surface with dry cloth. Sponges should not be used.
- The quality of the board markers used has a decisive effect on the cleaning result.
- For better maintenance, clean the surface weekly with whiteboard cleaner.

A

B

MAGNETIC



Full View

*D8202 Grid-point Gloss Whiteboard: As the distance between each dot is 5cm, the grid-point on D8202 might not be visible from the sample chip in this folder. Please request for a bigger sample before purchase.



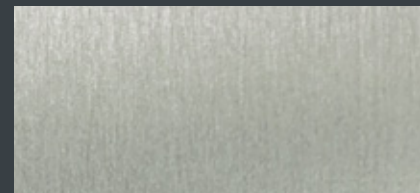
Black Magnetic Chalkboard
D8205

KS

Meeting
5 p.m.



Magnetic
Write with chalk



Brushed Magnetic Board
D4508 1.0 mm



Cross-Brushed Magnetic Board
DH030 1.3 mm

1

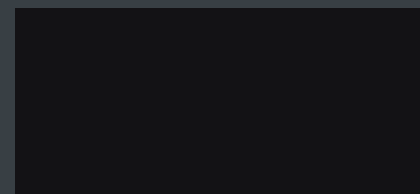


Macchiato Magnetic Chalkboard
D8234 1.0 mm

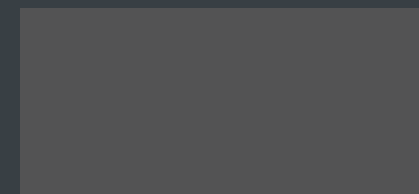


Green Magnetic Chalkboard
D8211 1.0 mm

2

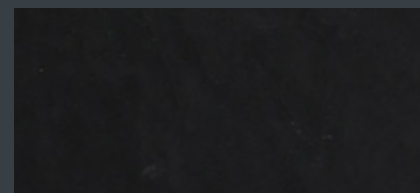


Black Magnetic Chalkboard
D8205 1.0 mm

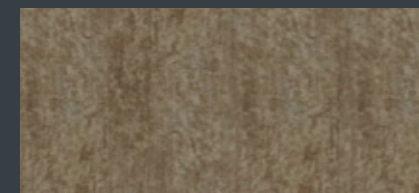


Stone Grey Magnetic Chalkboard
DH029 1.0 mm

3



Slate Black
D8267 1.0 mm



Raw Magnetic Board
*D4702 1.0 mm

4

A

B

MAGNETIC



Full View

*D4702 Raw Magnetic Board
It is non-decoration surface to customize any finishing such as painting, wallpaper, veneer, laminate, etc.

SINCE 1913, FORMICA® DESIGNS FOR TODAY WITH FOREVER IN MIND.



Herbert A. Faber Daniel J. O'Conor

FORMICA'S FOUNDING

Formica® was founded in Cincinnati in 1913 by two young men, Herbert A. Faber and Daniel J. O'Conor. Their high-pressure plastic resins were intended to serve as electrical insulators replacing mineral Mica, which was used for that purpose at the time. Hence the name "Formica" was chosen. World-renowned artists and architects had also begun to recognize the potential of the decorative laminates and specified them for modernist and art deco interiors.

FORMICA'S SERVICES

Formica® offers a complete range of surface decorative products with Protec+™ technology (High Pressure Laminate, Compact® Grade, ColorCore®, Formica® Custom Graphics™ and FRguard®), premium decorative products (DecoMetal® and FENIX®) and a range of functional products (CHguard® and VIVIX®). All Formica® High Pressure Laminates conform to European BS EN438 standards. And meanwhile, we have got the certification of ISO 9001: 2015, ISO 14001: 2015, ISO 45001: 2018, and GREENGUARD. Formica owns manufacturing bases worldwide, with four located in Asia. Major bases are located in Shanghai (China), Jiujiang (China), Hsinchu (Taiwan) and Bangkok (Thailand).

Formica and the Formica Anvil Device are registered trademarks of The Diller Corporation. © 2020 The Diller Corporation



As a professional word, "Formica" has been recorded in The Oxford English Dictionary as a replacement for decorative laminates.

Formica's Logo History



CHAMPIONING SUSTAINABILITY THROUGH FORMICA® SURFACES.



GREENGUARD CERTIFICATION

Formica Group has taken significant steps to ensure that its products promote a healthy indoor air quality in homes, offices, schools and other indoor environments. According to the US Environmental Protection Agency (USEPA), the most effective way to reduce indoor air pollution is to reduce or eliminate harmful chemical emissions. Formica® takes pride in meeting the strict emissions limits of the GREENGUARD Environmental Institute and in achieving GREENGUARD Certification for Indoor Air Quality for Formica® Laminates, Formica® Laminates, ColorCore®, Compact® and DecoMetal® are certified in Asia according to the GREENGUARD Certification and GREENGUARD Gold Certification standards for Indoor Air Quality. Formica® FRguard®+ is certified with GREENGUARD Certification for Indoor Air Quality.



SINGAPORE GREEN BUILDING PRODUCT CERTIFICATION

The achievement of SGBP certification is a testament to Formica Group's commitment towards making sustainable products that promote a healthier environment to support sustainable design, and protecting vital resources for future needs via our ongoing efforts to put our green principles in practice through life cycle assessment (LCA), sustainable operations and carbon reduction.



042-065 ENVIRONMENTALLY IMPROVED LOW EMISSION LOW TOXICITY

SINGAPORE GREEN LABEL

Formica® Laminates and Formica® Compact® Grade Laminate are Singapore Green Label certified by the Singapore Environment Council under "Environmentally Improved Low Emission Low Toxicity" category.



CARBON REDUCTION LABEL

Formica Group is the first laminate manufacturer in the world to be awarded with Carbon Trust's Carbon Reduction Label. Formica Group demonstrates its ongoing commitment to reducing its global environmental impact by undergoing carbon footprint assessment and labelling products with the Carbon Reduction Label. Formica Group is pleased to announce that it has measured the carbon footprint for its range of High Pressure Laminates (HPL), Continuous Pressure Laminates (CPL), Compact Laminates and Bonded Worktops, which is now qualified to carry the Carbon Trust's Carbon Reduction Label.

INDEX

CODE	DESCRIPTION	PAGE	REF
D1990	Polished Black	35	A1
D1999	Copper Antique	47	A3
D1999 SRM	Copper Antique	12	B1
D2006	Matte Bronze Aluminium New	41	A1
D2021	Mirror Aluminium	35	B1
D2022	Brushed Aluminium	39	A1
D2022 SRM	Brushed Aluminium	8	A1
D2032	Brushed Pewter	39	A2
D2032 SRM	Brushed Pewter	8	A2
D2035	Aluminium Mesh	33	A1
D2041	Polished Gold Aluminium	35	B2
D2042	Brushed Goldtone	37	B1
D2042 SRM	Brushed Goldtone	9	B1
D2052	Brushed Copper Aluminium	37	A1
D2052 SRM	Brushed Copper Aluminium	9	A3
D2113	Copper Maple Leaves	47	B1
D2121	Light Hammer Copper Antiqued	47	A1
D2126	Bronze Brushed Aluminium	37	A2
D2126 SRM	Bronze Brushed Aluminium	9	B3
D2178	Brushed Stainless Steel	39	B1
D2802	Dimpled Goldtone	21	B3
D2805	Lounge Bronzetone	19	A1
D2806	Lounge Steeltone	19	B1
D2807	Dimpled Bronzetone	21	B4
D4116	Aluminium Crush	45	B3
D4116 SRM	Aluminium Crush	13	A2
D4249	Aluminium Longline	37	A4
D4508	Brushed Magnetic Board	55	A1
D4691	Copper Stratos Diagonal	47	B2
D4691 SRM	Copper Stratos Diagonal	12	A1
D4702	Raw Magnetic Board	55	B4
D4740	Horizontal Corrugated Steeltone	23	A2
D4748	Vertical Corrugated Matte Aluminium	23	A3
D4751	Cella Polished Tea	25	B3
D4778	Horizontal Corrugated Matte Anthracite	23	B3
D4899	Bronze Mesh	33	A3
D4939	Cella Goldtone	25	A1
D4941	Champagne Mesh	33	A2
D5306	Plex Argent	21	A1
D5307	Plex Umbra	21	A3
D5309	Plex Gold	21	B1
D5310	Plex Graphite	21	A2
D5312	Brushed Umbra	39	B2
D5391	Graphite Veil	19	B2
D5392	Copper Veil	19	A2
D5471	Lava Goldtone	31	A1
D5474	Lava Smokey Grey	31	B1
D6483	Craft Bronzetone	27	A1
D6484	Craft Argent	27	B1
D6485	Craft Umbra	27	A2
D6486	Plex Bronzetone	21	B2
D8040	Cross-Brushed Brownish Grey	41	A3
D8040 SRM	Cross-Brushed Brownish Grey	10	B2
D8103	Champagne Longline	37	A3
D8104	Copper Plain Crush Stipple	45	B4
D8104 SRM	Copper Plain Crush Stipple	13	B1
D8105	Aluminium Brushed Black	39	A3
D8109	Copper Crush	45	A4
D8109 SRM	Copper Crush	13	A1
D8122	Anodised Aluminium	41	B3
D8123	Gold Brush	41	B4
D8124	Silver Brush	41	A4
D8202	Grid-point Gloss Whiteboard	53	B1
D8205	Black Magnetic Chalkboard	55	A3
D8206	Gloss Magnetic Whiteboard	53	A1
D8207	Projector Matte	53	A4
D8211	Green Magnetic Chalkboard	55	B2
D8234	Macchiato Magnetic Chalkboard	55	A2
D8265	Cella Polished Coppertone	25	A3
D8266	Cella Polished Smokey Grey	25	B4

INDEX

CODE	DESCRIPTION	PAGE	REF
D8267	Slate Black	55	A4
D8269	Crisp Gold	45	B2
D8270	Crisp Anthracite	45	B1
D8271	Crisp Oxygreen	45	A1
D8272	Crisp Rose	45	A2
D8274	Crisp Antique Copper	45	A3
D8275	Moon Turquoise Copper	43	B2
D8276	Moon Dark Copper	43	B1
D8277	Moon Light Copper	43	A1
D8278	Moon Brass	43	A2
D8279	Diamond Antique Brass	18	A2
D8279 SRM	Diamond Antique Brass	11	B1
D8280	Diamond Antique Copper	18	A3
D8280 SRM	Diamond Antique Copper	11	A1
D8281	Cascade Natural	27	A4
D8282	Cascade Goldtone	27	A3
D8283	Cascade Tea	27	B2
D8284	Cascade Smokey Grey	27	B4
D8285	Cascade Coppertone	27	B3
D8286	Cella Polished Natural	25	A4
D8287	Cella Polished Goldtone	25	B2
D8288	Crossline Polished Natural	29	A1
D8289	Crossline Polished Goldtone	29	A3
D8290	Crossline Polished Tea	29	B2
D8291	Crossline Polished Smokey Grey	29	B1
D8292	Crossline Polished Coppertone	29	A2
DH003	Cella Coppertone	25	B1
DH004	Cella Black	25	A2
DH005	Brushed Bronzetone	39	B4
DH005 SRM	Brushed Bronzetone	9	A2
DH007	Matte Gunmetal	35	B3
DH008	Mirror Coppertone	35	A3
DH014	Matrix Champagne	19	A3
DH018	Dimpled Anthracite	21	A4
DH019 SRM	Alu Softmatt Natural	7	A1
DH020	Footplate Steeltone	23	A4
DH028	Stone Grey Magnetic Whiteboard	53	B2
DH029	Stone Grey Magnetic Chalkboard	55	B3
DH030	Cross-Brushed Magnetic Board	55	B1
DH031	Macchiato Magnetic Whiteboard	53	A3
DH035	Cross-Brushed Natural	41	A2
DH035 SRM	Cross-Brushed Natural	10	A1
DH036	Cross-Brushed Goldtone	41	B2
DH036 SRM	Cross-Brushed Goldtone	10	B1
DH038	Brushed Graphite	39	B3
DH038 SRM	Brushed Graphite	8	A3
DH039	Anthracite Mesh	33	B3
DH089	Lava Coppertone	31	B2
DH091	Copper Brass Antique	47	A2
DH094	Satin Steeltone	41	B1
DH094 SRM	Satin Steeltone	7	A3
DH098	Dots Reverse	23	A1
DH105	Dots Steeltone	23	B1
DH110	Light Grey Magnetic Whiteboard	53	A2
DH112	Applegreen Magnetic Whiteboard	53	B3
DH123	Mirror Tea	35	A2
DH137	Brushed Champagne	39	A4
DH137 SRM	Brushed Champagne	9	A1
DH138	Bronzetone Longline	37	B3
DH139	Brushed Rosegold	37	B2
DH139 SRM	Brushed Rosegold	9	B2
DH140	Natural Polished Mesh	33	B1
DH141	Lava Natural	31	A3
DH142	Goldtone Polished Mesh	33	B2
DH144	Lava Tea	31	A2
DH147	Diamond Bronzetone	18	A1
DH148	Vintage Mesh	33	A4
DH187	Vertical Corrugated Steeltone	23	B2
DH191 SRM	Alu Brushed Natural	7	A2

